

RECEIVED

N. M. O. C. C. COPY

Form 9-331C
(May 1963)SUBMIT IN TRIPLICATE*
(Other instructions on
reverse side)Form approved.
Budget Bureau No. 42-R1425.APR 17 1972 UNITED STATES
DEPARTMENT OF THE INTERIOR
D. C. C. GEOLOGICAL SURVEYARTESIA, OFFICE
APPLICATION FOR PERMIT TO DRILL, DEEPEN, OR PLUG BACK

1a. TYPE OF WORK

DRILL ☒DEEPEN ☐PLUG BACK ☐

b. TYPE OF WELL

OIL

WELL ☒

GAS

WELL ☐

OTHER

SINGLE

ZONE ☐

MULTIPLE

ZONE ☐

2. NAME OF OPERATOR

General American Oil Company of Texas

3. ADDRESS OF OPERATOR

P. O. Box 416 Loco Hills New Mexico 88255

4. LOCATION OF WELL (Report location clearly and in accordance with any State requirements.°)

At surface

1650' FNL and 1650' FWL, Sec. 23, T17S, R29E

At proposed prod. zone

14. DISTANCE IN MILES AND DIRECTION FROM NEAREST TOWN OR POST OFFICE*

4 miles west of Loco Hills, New Mexico

15. DISTANCE FROM PROPOSED*

LOCATION TO NEAREST

PROPERTY OR LEASE LINE, FT.

(Also to nearest drig. unit line, if any)

990'

18. DISTANCE FROM PROPOSED LOCATION*

TO NEAREST WELL, DRILLING, COMPLETED,

OR APPLIED FOR, ON THIS LEASE, FT.

1000'

16. NO. OF ACRES IN LEASE

1115

19. PROPOSED DEPTH

3375'

17. NO. OF ACRES ASSIGNED
TO THIS WELL

40

20. ROTARY OR CABLE TOOLS

Rotary

21. ELEVATIONS (Show whether DF, RT, GR, etc.)

3597' GL

22. APPROX. DATE WORK WILL START*

April 21, 1972

23.

PROPOSED CASING AND CEMENTING PROGRAM

SIZE OF HOLE	SIZE OF CASING	WEIGHT PER FOOT	SETTING DEPTH	QUANTITY OF CEMENT
12-1/4"	8-5/8"	20#	390'	100 Sacks
7-7/8"	4-1/2"	9.5#	3375'	350 Sacks

We propose to drill this well to 3375' and complete in the Grayburg and San Andres. Both zones will be acidized or sand fraced if production is indicated. Mud

Mud Program: Water and Native mud. Will mud up 100' from T.D. to clean hole for logging.

A 10" 3,000# blowout preventer will be used in drilling this well.

RECEIVED
APR 14 1972
U. S. GEOLOGICAL SURVEY
ARTESIA, NEW MEXICO

IN ABOVE SPACE DESCRIBE PROPOSED PROGRAM: If proposal is to deepen or plug back, give data on present productive zone and proposed new productive zone. If proposal is to drill or deepen directionally, give pertinent data on subsurface locations and measured and true vertical depths. Give blowout preventer program, if any.

24.

SIGNED

W. E. Hallett

TITLE District Superintendent

DATE April 12, 1972

(This space for Federal or State office use)

PERMIT NO.

APPROVAL DATE

DATE

APPROVED
APR 14 1972
R. L. BECKMAN
ACTING DISTRICT ENGINEERCONDITIONS OF APPROVAL, IF ANY:
THIS APPROVAL IS RESCINDED IF OPERATIONS
ARE NOT COMMENCED WITHIN 3 MONTHS.
EXPIRES

*See Instructions On Reverse Side

**MEXICO OIL CONSERVATION COMMISSION
WELL LOCATION AND ACREAGE DEDICATION PLAT**

Form C-102
Supersedes C-128
Effective 1-1-65

All distances must be from the outer boundaries of the Section.

Operator GENERAL AMERICAN OIL COMPANY			Lease BURCH "C"		Well No. 25
Unit Letter R	Section 23	Township 17 South	Range 29 East	County Eddy	

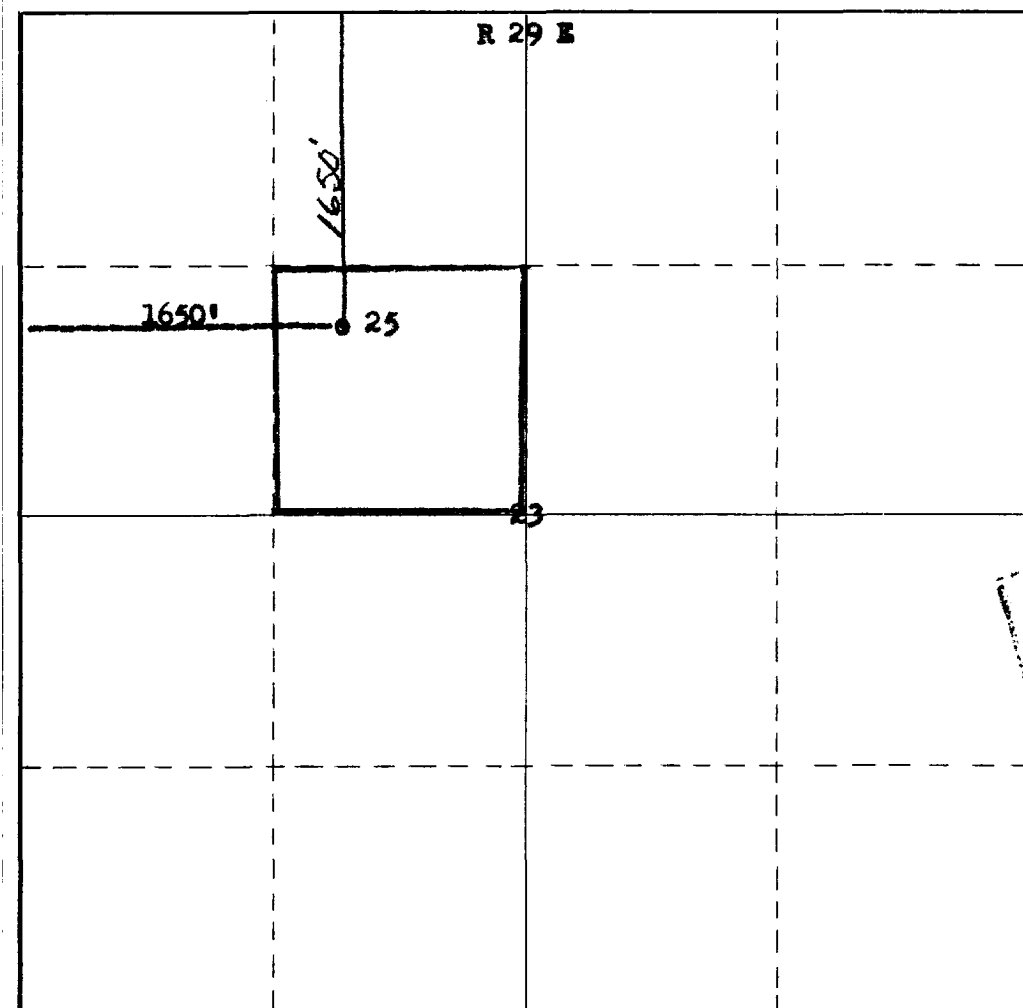
Actual Footage Location of Well: 1650 feet from the North line and 1650 feet from the West line					
Ground Level Elev. 3597	Producing Formation Grayburg & San Andres		Pool Grayburg-Jackson	Dedicated Acreage: 40 Acres	

1. Outline the acreage dedicated to the subject well by colored pencil or hachure marks on the plat below.
2. If more than one lease is dedicated to the well, outline each and identify the ownership thereof (both as to working interest and royalty).
3. If more than one lease of different ownership is dedicated to the well, have the interests of all owners been consolidated by communitization, unitization, force-pooling, etc?

☐ Yes ☐ No If answer is "yes," type of consolidation _____

If answer is "no," list the owners and tract descriptions which have actually been consolidated. (Use reverse side of this form if necessary.) _____

No allowable will be assigned to the well until all interests have been consolidated (by communitization, unitization, forced-pooling, or otherwise) or until a non-standard unit, eliminating such interests, has been approved by the Commission.



CERTIFICATION

I hereby certify that the information contained herein is true and complete to the best of my knowledge and belief.

Name

W. E. Walter

Position

District Superintendent

Company

General American Oil Co.

Date

of Texas

April 13, 1972

I hereby certify that the well location shown on this plat was plotted from field actual surveys made by me or under my supervision and that the same is true and correct to the best of my knowledge and belief.

Date Surveyed

April 10th, 1972

Registered Professional Engineer
and/or Land Surveyor

Certificate No.

512