

UNITED STATES  
DEPARTMENT OF THE INTERIOR  
GEOLOGICAL SURVEY

## APPLICATION FOR PERMIT TO DRILL, DEEPEN, OR PLUG BACK

## 1a. TYPE OF WORK

DRILL ☒DEEPEN ☐PLUG BACK ☐

## b. TYPE OF WELL

OIL  
WELL ☒GAS  
WELL ☐OTHER ☐SINGLE  
ZONE ☐MULTIPLE  
ZONE ☐

## 2. NAME OF OPERATOR

Skelly Oil Company

## 3. ADDRESS OF OPERATOR

P. O. Box 1351, Midland, Texas 79701

## 4. LOCATION OF WELL (Report location clearly and in accordance with any State requirements.)\*

At surface

660' FEL and 1980' FNL Sec. 11-17S-31E

At proposed prod. zone

## 14. DISTANCE IN MILES AND DIRECTION FROM NEAREST TOWN OR POST OFFICE\*

## 15. DISTANCE FROM PROPOSED\*

LOCATION TO NEAREST  
PROPERTY OR LEASE LINE, FT.  
(Also to nearest drlg. unit line, if any)

## 16. NO. OF ACRES IN LEASE

640

17. NO. OF ACRES ASSIGNED  
TO THIS WELL

40

18. DISTANCE FROM PROPOSED LOCATION\*  
TO NEAREST WELL, DRILLING, COMPLETED,  
OR APPLIED FOR, ON THIS LEASE, FT.

## 19. PROPOSED DEPTH

3950'

## 20. ROTARY OR CABLE TOOLS

Rotary

## 21. ELEVATIONS (Show whether DF, RT, GR, etc.)

Unknown

## 22. APPROX. DATE WORK WILL START\*

July 20, 1972

## 23.

## PROPOSED CASING AND CEMENTING PROGRAM

SIZE OF HOLE	SIZE OF CASING	WEIGHT PER FOOT	SETTING DEPTH	QUANTITY OF CEMENT
11"	8-5/8"	24#	650'	350 sacks
7-7/8"	5-1/2"	15.5#	3950'	1300 sacks

The pump and plug process will be used in cementing all strings of casing. The 5-1/2" OD casing will be cemented to surface and perforated in the Grayburg-San Andres at approximately 3200' to 3900' and will be stimulated. The drilling fluid will be brine water with sufficient gel to condition the hole for logging and running casing. Blowout preventer will be installed and tested to 1000 PSI.

RECEIVED

JUL 17 1972

PROPOSED OPERATIONS WILL NOT  
AFFECT ENVIRONMENT SIGNIFICANTLYD. C. C.  
ARTESIA, NEW MEXICO

RECEIVED

JUL 10 1972

U. S. GEOLOGICAL SURVEY  
ARTESIA, NEW MEXICO

IN ABOVE SPACE DESCRIBE PROPOSED PROGRAM: If proposal is to deepen or plug back, give data on present productive zone and proposed productive zone. If proposal is to drill or deepen directionally, give pertinent data on subsurface locations and measured and true vertical depths. Blowout preventer program, if any.

(Signed) J. R. Avent

SIGNED

J. R. Avent

TITLE District Admin. Coordinator

DATE

July 5, 1972

(This space for Federal or State office use)

PERMIT NO.

APPROVAL DATE

JUL 13 1972

APPROVED BY

TITLE

DISTRICT ENGINEER

DATE

JUL 13 1972

CONDITIONS OF APPROVAL, IF ANY:

THIS APPROVAL IS RESCINDED IF OPERATIONS  
ARE NOT COMMENCED WITHIN 3 MONTHS.  
EXPIRES 10-13-72

\*See Instructions On Reverse Side

MEXICO OIL CONSERVATION COMMISSION  
WELL LOCATION AND ACREAGE DEDICATION PLAT

RECEIVED

Form C-102  
Supersedes C-128  
Effective 1-1-65

JUL 17 1972

All distances must be from the outer boundaries of the Section

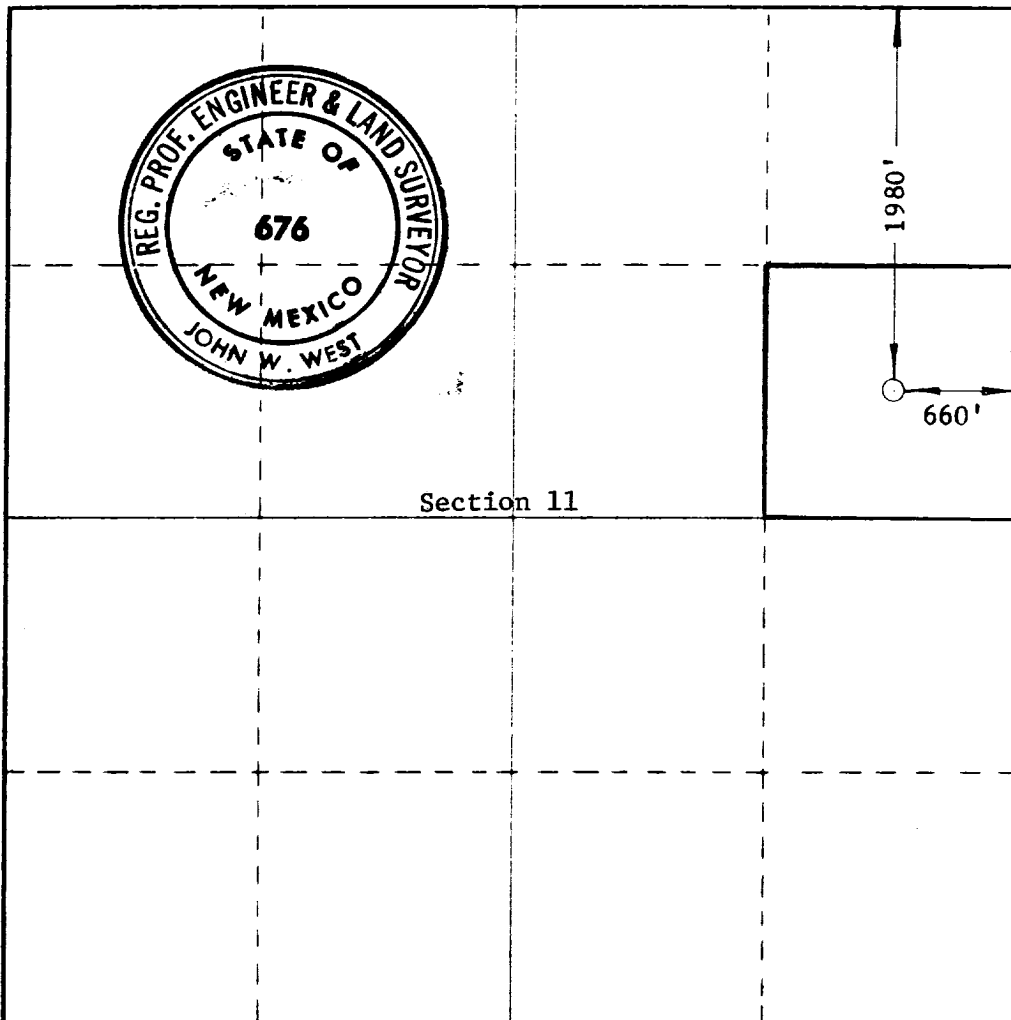
Operator <b>SKELLY OIL COMPANY</b>			Lease <b>LEA "C"</b>			O. C. C. 15 <b>ARTESIA, OFFICE</b>		
Unit Letter <b>H</b>	Section <b>11</b>	Township <b>17 SOUTH</b>	Range <b>31 EAST</b>	County <b>EDDY</b>				
Actual Footage Location of Well: <b>660 feet from the EAST line and 1980 feet from the NORTH line</b>								
Ground Level Elev.	Producing Formation <b>Grayburg-San Andres</b>		Pool <b>Grayburg-Jackson</b>			Designated Acreage: <b>40</b>		

- Outline the acreage dedicated to the subject well by colored pencil or hachure marks on the plat below.
- If more than one lease is dedicated to the well, outline each and identify the ownership thereof (both as to working interest and royalty).
- If more than one lease of different ownership is dedicated to the well, have the interests of all owners been consolidated by communitization, unitization, force-pooling, etc?

☐ Yes ☐ No If answer is "yes," type of consolidation \_\_\_\_\_

If answer is "no," list the owners and tract descriptions which have actually been consolidated. (Use reverse side of this form if necessary.) \_\_\_\_\_

No allowable will be assigned to the well until all interests have been consolidated (by communitization, unitization, forced-pooling, or otherwise) or until a non-standard unit, eliminating such interests, has been approved by the Commission.



CERTIFICATION

I hereby certify that the information contained herein is true and complete to the best of my knowledge and belief.

Name  
**C. J. Love**

Position  
**District Production Manager**

Company  
**Skelly Oil Company**

Date  
**July 5, 1972**

RECEIVED  
JUL 10 1972  
U. S. GEOLOGICAL SURVEY  
ARTESIA, NEW MEXICO

Date Surveyed  
**JUNE 28, 1972**

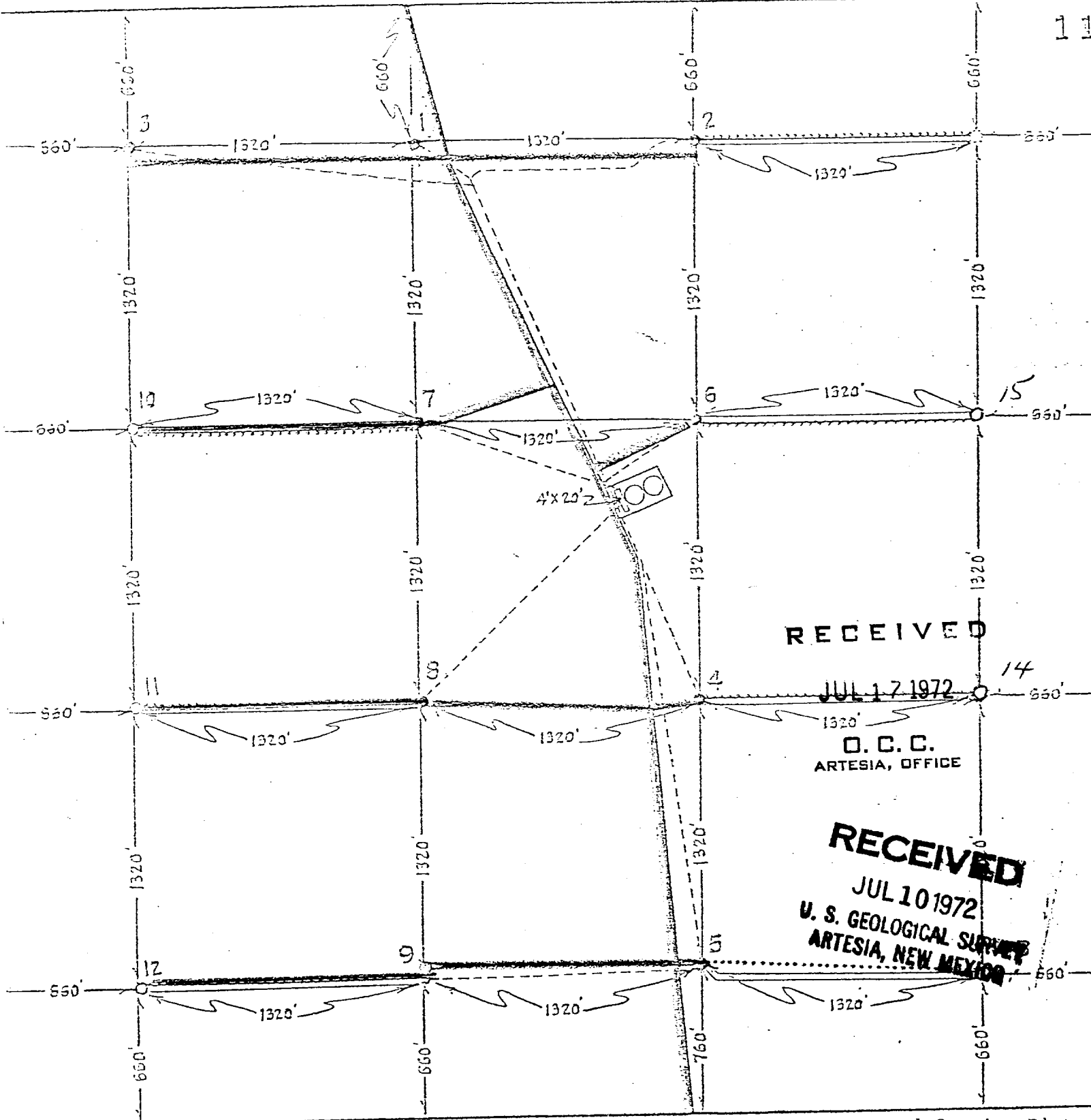
Registered Professional Engineer  
and/or Land Surveyor

**John W. West**

Certificate No. **676**

SKELLY OIL COMPANY  
LEA "C" LEASE NO. 66813  
FEDERAL SERIAL NO. 029410

Township T-17-S, Range R-31-E, County Eddy, State New Mexico



RECEIVED

JUL 17 1972

O. C. C.  
ARTESIA, OFFICE

RECEIVED

JUL 10 1972

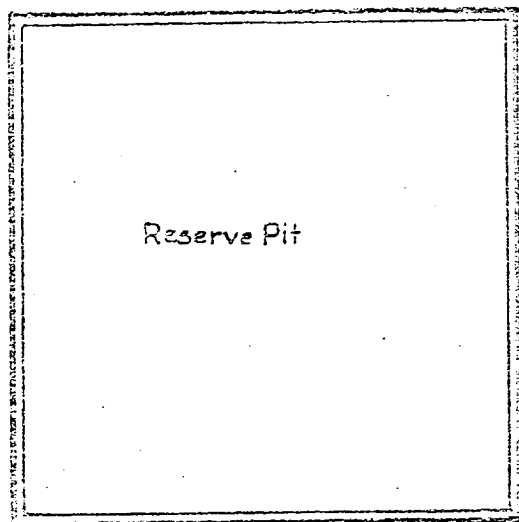
U. S. GEOLOGICAL SURVEY  
ARTESIA, NEW MEXICO

LEGEND

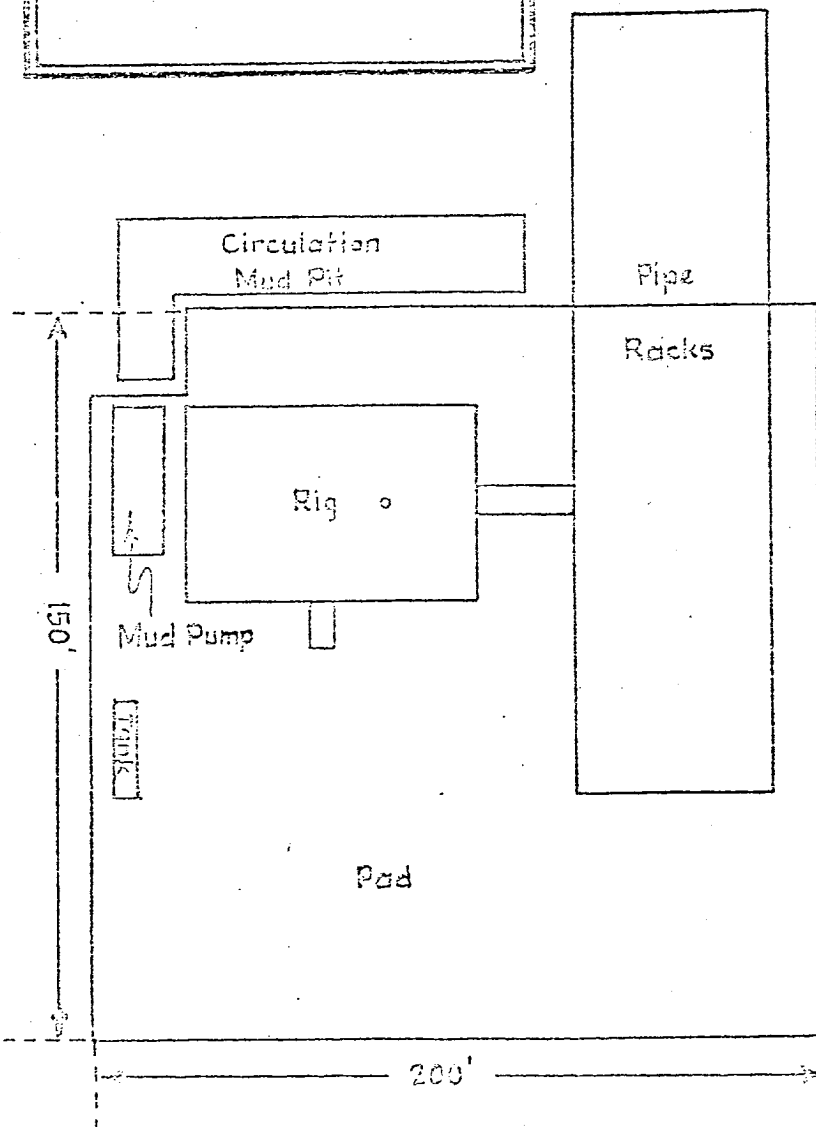
- Oilwell
- Location
- Proposed Location
- Lease Roads
- Flow Lines (Production)
- .... Planned Flowlines
- Product water disposed of in Grayburg-Jackson Reservoir 2 miles South.
- Camps (None)
- ≡ Airstrips (None)
- ⊕ Water Supply (None)
- Planned Access Roads
- Skelly Unit Injection System—Fresh from Eagle Water Company.

Schematic  
(Not Scaled)

Lea "C" Well No. 15



Note: Mud pits will be filled. Drilling equipment removed and surface surrounding the pad cleaned up and leveled after the well is completed. Waste material to be buried in the mud pit.



RECEIVED

JUL 17 1972

O. C. C.  
ARTESIA, OFFICE



RECEIVED

JUL 10 1972

U. S. GEOLOGICAL SURVEY  
ARTESIA, NEW MEXICO