

NO. OF COPIES RECEIVED	6
DISTRIBUTION	
SANTA FE	1
FILE	1
U.S.G.S.	2
LAND OFFICE	1
OPERATOR	1

NEW MEXICO OIL CONSERVATION COMMISSION  
**RECEIVED**

JUL 21 1982

O. C. D.

30-015-24199  
Form O-101  
Revised 1-1-85

5A. Indicate Type of Lease	
STATE <input checked="" type="checkbox"/>	FEE <input type="checkbox"/>
5. State Oil & Gas Lease No.	
B-3635	

**APPLICATION FOR PERMIT TO DRILL, DEEPEN, OR PLUG BACK**

1a. Type of Work				7. Unit Agreement Name	
b. Type of Well OIL WELL <input checked="" type="checkbox"/> GAS WELL <input type="checkbox"/> OTHER <input type="checkbox"/> DEEPEN <input type="checkbox"/> PLUG BACK <input type="checkbox"/>				8. Farm or Lease Name Hover State	
2. Name of Operator J. Cleo Thompson ✓				9. Well No. 4	
3. Address of Operator c/o Oil Reports & Gas Services, Inc., Box 763, Hobbs, NM 88241				10. Field and Pool, or Wildcat Square Lake	
4. Location of Well UNIT LETTER <u>A</u> LOCATED <u>660</u> FEET FROM THE <u>North</u> LINE AND <u>1310</u> FEET FROM THE <u>East</u> LINE OF SEC. <u>2</u> TWP. <u>17S</u> RGE. <u>30E</u> NMPM				12. County Eddy	
21. Elevations (Show whether DF, RT, etc.) 3756.6 GR				19. Proposed Depth 3200	
21A. Kind & Status Plug. Bond Blanket		21B. Drilling Contractor Trafalgar Drilling Co		20. Rotary or C.T. Rotary	
				22. Approx. Date Work will start 8/1/82	

**PROPOSED CASING AND CEMENT PROGRAM**

SIZE OF HOLE	SIZE OF CASING	WEIGHT PER FOOT	SETTING DEPTH	SACKS OF CEMENT	EST. TOP
12 1/4	8 5/8	24#	500	250	Circ
7 7/8	5 1/2	15.5#	3200	500	500

Unorthodox location approved by Order R-6983

Completion to be conventional perforation and treatment

BOP as per attached diagram

*Plotted ID-1  
AP, & BW  
7-23-82*

APPROVAL VALID FOR 180 DAYS  
PERMIT EXPIRES 1-23-83  
UNLESS DRILLING UNDERWAY

IN ABOVE SPACE DESCRIBE PROPOSED PROGRAM: IF PROPOSAL IS TO DEEPEN OR PLUG BACK, GIVE DATA ON PRESENT PRODUCTIVE ZONE AND PROPOSED NEW PRODUCTIVE ZONE. GIVE BLOWOUT PREVENTER PROGRAM, IF ANY.

I hereby certify that the information above is true and complete to the best of my knowledge and belief.

Signed Donna Walker Title Agent Date July 20, 1982  
(This space for State Use)

APPROVED BY W. L. Walker TITLE OIL AND GAS INSPECTOR DATE JUL 23 1982  
CONDITIONS OF APPROVAL, IF ANY:

**NEW MEXICO OIL CONSERVATION COMMISSION  
WELL LOCATION AND ACREAGE DEDICATION PLAT**

Form C-122  
Supersedes C-128  
Effective 1-1-85

All distances must be from the outer boundaries of the Section

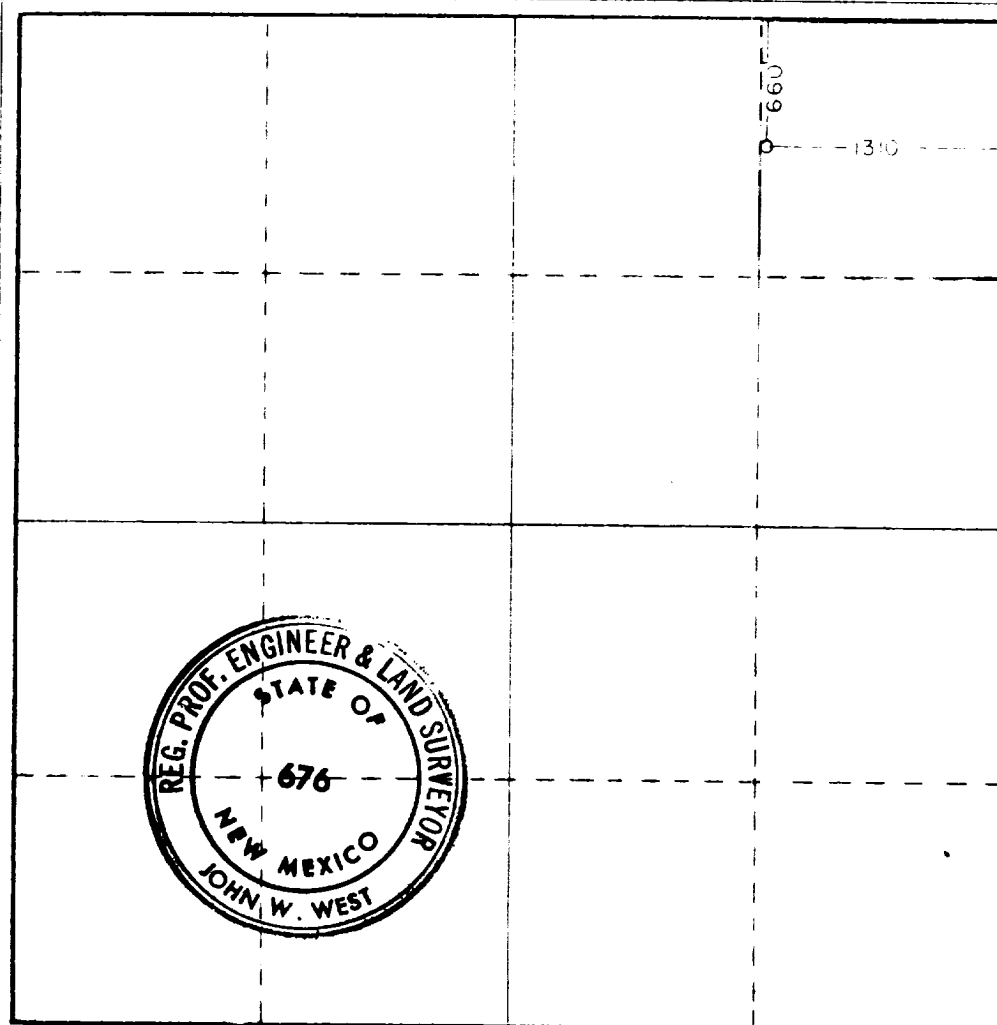
Operator <b>J. CLEO THOMPSON</b>			Lease <b>HOVER STATE</b>		Well No. <b>4</b>
Tract Letter <b>A</b>	Section <b>2</b>	Township <b>17 SOUTH</b>	Range <b>30 EAST</b>	County <b>EDDY</b>	
A. First Point Location of Well:					
<b>660</b>	feet from the	<b>NORTH</b>	Line and	<b>1310</b>	feet from the
				<b>EAST</b>	
Ground Level Elev. <b>3756.6</b>	Producing Formation <b>San Andres</b>		Fluid <b>Square Lake - G. O. M.</b>		Dedicated Acreage: <b>40</b> Acres

1. Outline the acreage dedicated to the subject well by colored pencil or hachure marks on the plat below.
2. If more than one lease is dedicated to the well, outline each and identify the ownership thereof (both as to working interest and royalty).
3. If more than one lease of different ownership is dedicated to the well, have the interests of all owners been consolidated by communitization, unitization, force-pooling, etc?

☐ Yes    ☐ No    If answer is "yes," type of consolidation \_\_\_\_\_

If answer is "no," list the owners and tract descriptions which have actually been consolidated (Use reverse side of this form if necessary.) \_\_\_\_\_

No allowable will be assigned to the well until all interests have been consolidated (by communitization, unitization, forced-pooling, or otherwise) or until a non-standard unit, eliminating such interests, has been approved by the Commission.



**CERTIFICATION**

I hereby certify that the information contained herein is true and complete to the best of my knowledge and belief.

Signature: *Donna Holmes*  
Position:  
**Agent**

Company:  
**J. Cleo Thompson**

Date:  
**July 20, 1982**

I hereby certify that the well location shown on this plat was plotted from field notes of actual surveys made by me or under my supervision, and that the same is true and correct to the best of my knowledge and belief.

Date Surveyed:  
**JULY 6, 1982**

Registered Professional Engineer and/or Land Surveyor

Signature: *John W. West*

Certificate No. **JOHN W. WEST 676**  
**PATRICK A. ROMERO 6463**  
**Ronald J. Eidson 3239**

0 330 660 990 1320 1650 1980 2310 2640 2970 3300 3630 3960 4290 4620 4950 5280 5610 5940 6270 6600

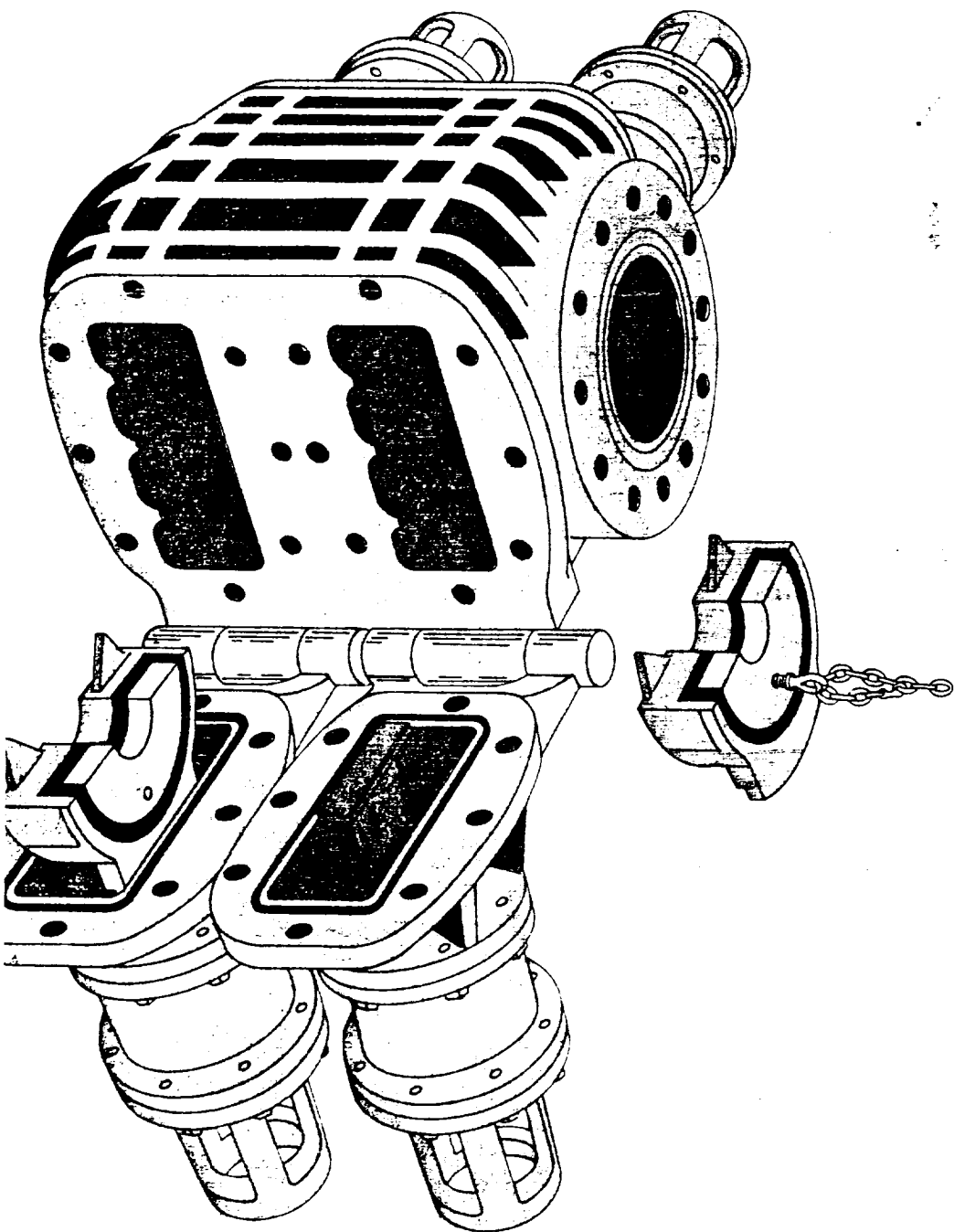
Shafter LWP ram blowout preventers are available in 9" and 7<sup>1</sup>/<sub>16</sub>"-3,000 psi sizes for workovers and well

servicing operations. They have the same basic features as LWS BOP's.

## SPECIAL FEATURES

- Ram mounts vertically onto ram shaft, as shown below.
- Manual-lock operators are furnished on all LWP BOP's.

- Flanged 2<sup>1</sup>/<sub>16</sub>"-3,000 psi side outlets are available on the front and/or back (hinge) sides of the 9" LWP. No side outlets can be supplied on the 7<sup>1</sup>/<sub>16</sub>" model.
- Internal or full environmental H<sub>2</sub>S trim is optional on Model LWP BOP's.



rams in the full screws and sw open, the ram: Applying closer extends the ra Replacement i onto the ram s to return rams bolting the doc

### MODEL LWI

The hydraulic below 1,000 p but the heavy- psi oil field acc

Less than one LWP.

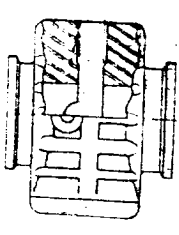
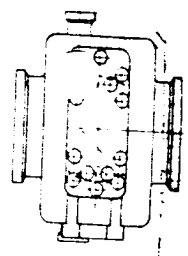
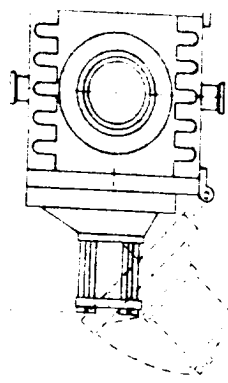
Hydraulic pas eliminate exter

### MODEL LWI

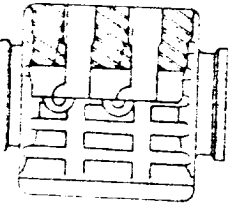
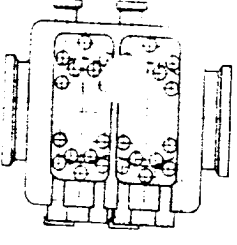
Manual-lock p rams when cl desired, the ram position by turn shoulders again pressure fail, th locked. They c

The manual lo and provide a c Threads on the the hydraulic fil from mud and s

Rams are open to their "unlock hydraulic pressi and pull the ram



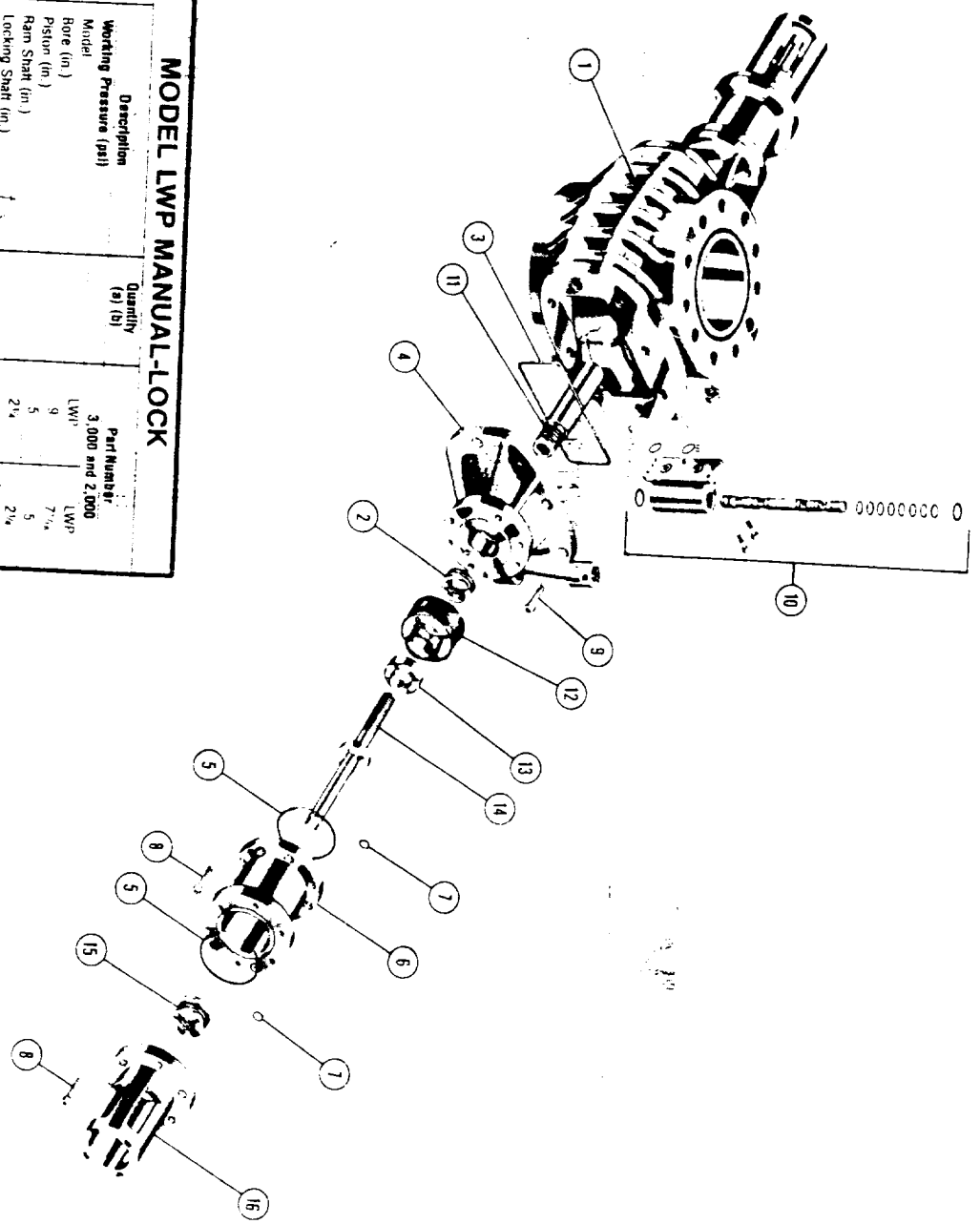
SINGLE



DOUBLE

# MODEL LWP MANUAL-LOCK

Item Number	Description	Quantity		Part Number	
		(a)	(b)	3,000 and 2,000 LWP	7,000 LWP
1	Body	2(2)		133531	133531
2	Ram Shaft Seal Assembly (d)	2(2)		030030	030007
3	Door Seal	2(2)		131402	130657
4	Door (Left)	1		131403	130658
5	O-Ring, Cylinder and Cylinder Head	4(4)		030134	030134
6	Cylinder (Left)	1		131404	130407
7	O-Ring, Cylinder Mainfold Port	1	4(4)	131405	130406
8	Cap Screw, Socket Head	24		030058	030058
9	Door Cap Screw	16(2)		010554	010554
10	Hinge Bracket Assembly, Right (d)	1(0)		132628	010753
11	Hinge Bracket Assembly, Left (d)	1(0)		132627	132627
12	Ram Shaft	2		130413	130413
13	Piston Assembly	2(2)		130012	130012
14	Locknut, Piston	2		130012	130012
15	Set Screw	2		030023	030023
16	O-Ring, Piston	2(2)		141185	141184
	Locking Shaft Seal Assembly (d)	2(2)		132629	132629
	Cylinder Head Right	1			



(a) Quantity shown for single model (an RUP) increase quantity proportionately for double or triple models.  
 (b) Two components share parts shown in parentheses; for single model (an RUP) increase quantity proportionately for double or triple models.  
 (c) Not a standard assembly; refer to the RUP and RUP for assembly instructions.