

RECEIVED BY

OCT 29 1985

UNITED STATES
DEPARTMENT OF THE INTERIOR

GEOLOGICAL SURVEY

APPLICATION FOR PERMIT TO DRILL, DEEPEN, OR PLUG BACK

1a. TYPE OF WELL

ARTESIA, OFFICE
DRILL ☒

DEEPEN ☐

PLUG BACK ☐

b. TYPE OF WELL

OIL WELL ☒

GAS WELL ☐

OTHER

SINGLE ZONE ☒

MULTIPLE ZONE ☐

2. NAME OF OPERATOR

Marbob Energy Corporation ✓

3. ADDRESS OF OPERATOR

P.O. Drawer 217, Artesia, N.M. 88210

4. LOCATION OF WELL (Report location clearly and in accordance with any State requirements.)*

At surface

75 FNL 1295 FWL

At proposed prod. zone

Same

14. DISTANCE IN MILES AND DIRECTION FROM NEAREST TOWN OR POST OFFICE*

20 air miles east of Artesia, N.M. 88210

15. DISTANCE FROM PROPOSED*

LOCATION TO NEAREST
PROPERTY OR LEASE LINE, FT.
(Also to nearest drig. unit line, if any)

75'

16. NO. OF ACRES IN LEASE

1480

17. NO. OF ACRES ASSIGNED
TO THIS WELL

40

18. DISTANCE FROM PROPOSED LOCATION*

TO NEAREST WELL, DRILLING, COMPLETED,
OR APPLIED FOR, ON THIS LEASE, FT.

971'

19. PROPOSED DEPTH

4500'

20. ROTARY OR CABLE TOOLS

Rotary

21. ELEVATIONS (Show whether DF, RT, GR, etc.)

3616.2 GR

22. APPROX. DATE WORK WILL START*

10/27/85

23.

PROPOSED CASING AND CEMENTING PROGRAM

SIZE OF HOLE	SIZE OF CASING	WEIGHT PER FOOT	SETTING DEPTH	QUANTITY OF CEMENT
12 1/4"	8 5/8"	24#	350'	Sufficient to circulate
7 7/8"	5 1/2"	15.5#	4500'	1500 sax, to base of salt

Pay zone will be selectively perforated and stimulated as needed for optimum production.

Attached are: 1. Location & acreage dedication plat
2. Supplemental drilling data
3. Surface use plan

IN ABOVE SPACE DESCRIBE PROPOSED PROGRAM: If proposal is to deepen or plug back, give data on present productive zone and proposed new productive zone. If proposal is to drill or deepen directionally, give pertinent data on subsurface locations and measured and true vertical depths. Give blowout preventer program, if any.

24.

SIGNED

DeMotte Morris

TITLE

Production Clerk

DATE

10/14/85

(This space for Federal or State office use)

PERMIT NO.

APPROVAL DATE

APPROVED BY

CONDITIONS OF APPROVAL, IF ANY:

TITLE

DATE

10-28-85

Subject to
Like Approval
by State

Unorthodox location

*See Instructions On Reverse Side

APPROVAL SUBJECT TO
GENERAL REQUIREMENTS AND
SPECIAL STIPULATIONS
ATTACHED

**MEXICO OIL CONSERVATION COMMISSION
WELL LOCATION AND ACREAGE DEDICATION PLAT**

Form C-102
Supersedes C-128
Effective 1-1-65

All distances must be from the outer boundaries of the Section

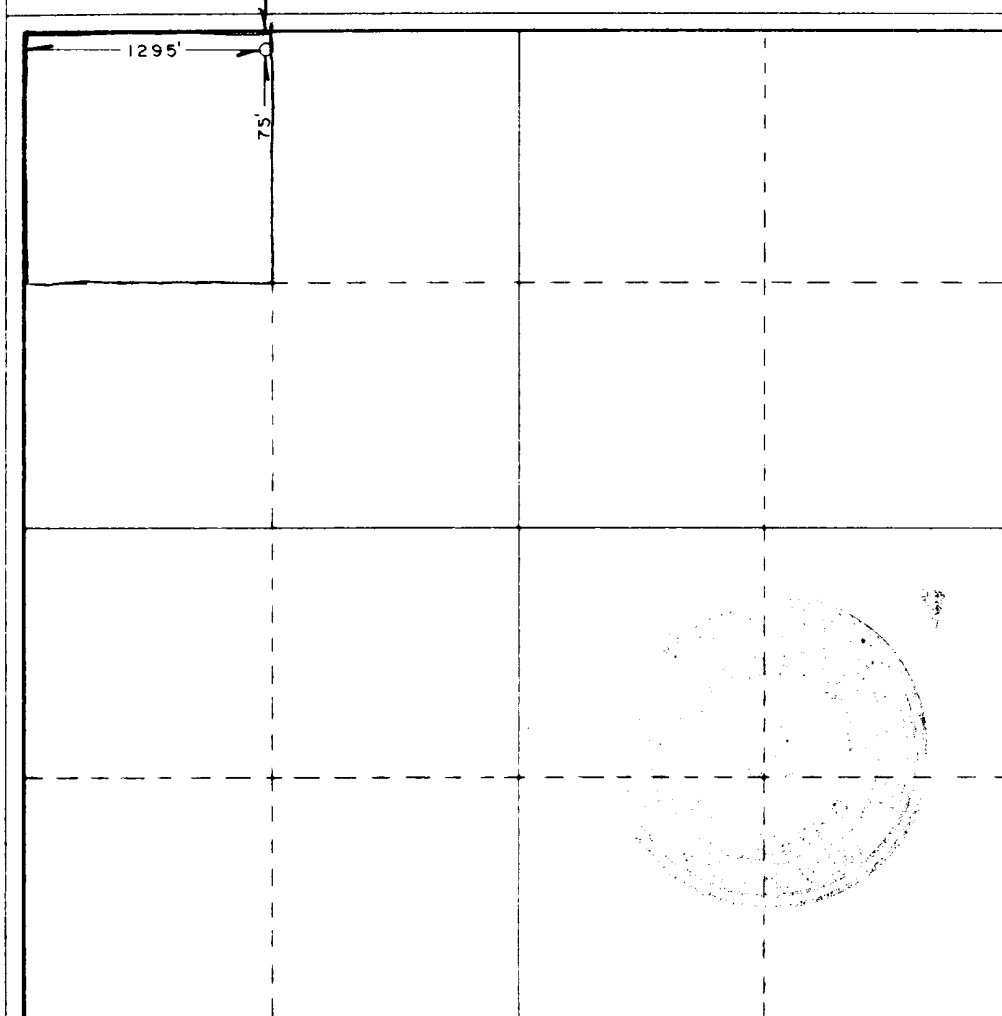
Operator MARBOB ENERGY CORP.		Lease M. DODD "B"		Well No.
Tract Letter D	Section 14	Township 17 SOUTH	Range 24 EAST	County ENDU
Actual Well Location of Well: <div style="display: flex; justify-content: space-between;"> 75 feet from the NORTH line and 1295 feet from the WEST line </div>				
Ground Level Elev. 3616.23	Producing Formation San Andres	Pool Grbg Jackson SR Qn Grbg SA	Dedicated Acreage 40 Acres	

- Outline the acreage dedicated to the subject well by colored pencil or hachure marks on the plat below.
- If more than one lease is dedicated to the well, outline each and identify the ownership thereof (both as to working interest and royalty).
- If more than one lease of different ownership is dedicated to the well, have the interests of all owners been consolidated by communitization, unitization, force-pooling, etc?

☐ Yes ☐ No If answer is "yes," type of consolidation _____

If answer is "no," list the owners and tract descriptions which have actually been consolidated. (Use reverse side of this form if necessary.) _____

No allowable will be assigned to the well until all interests have been consolidated (by communitization, unitization, forced-pooling, or otherwise) or until a non-standard unit, eliminating such interests, has been approved by the Commission.



CERTIFICATION

I hereby certify that the information contained herein is true and complete to the best of my knowledge and belief.

DeNette Morriss
Name

DeNette Morriss

Position

Production Clerk

Company

Marbob Energy Corporation

Date

10/14/85

I hereby certify that the well location shown on this plat was plotted from field notes of actual surveys made by me or under my supervision, and that the same is true and correct to the best of my knowledge and belief.

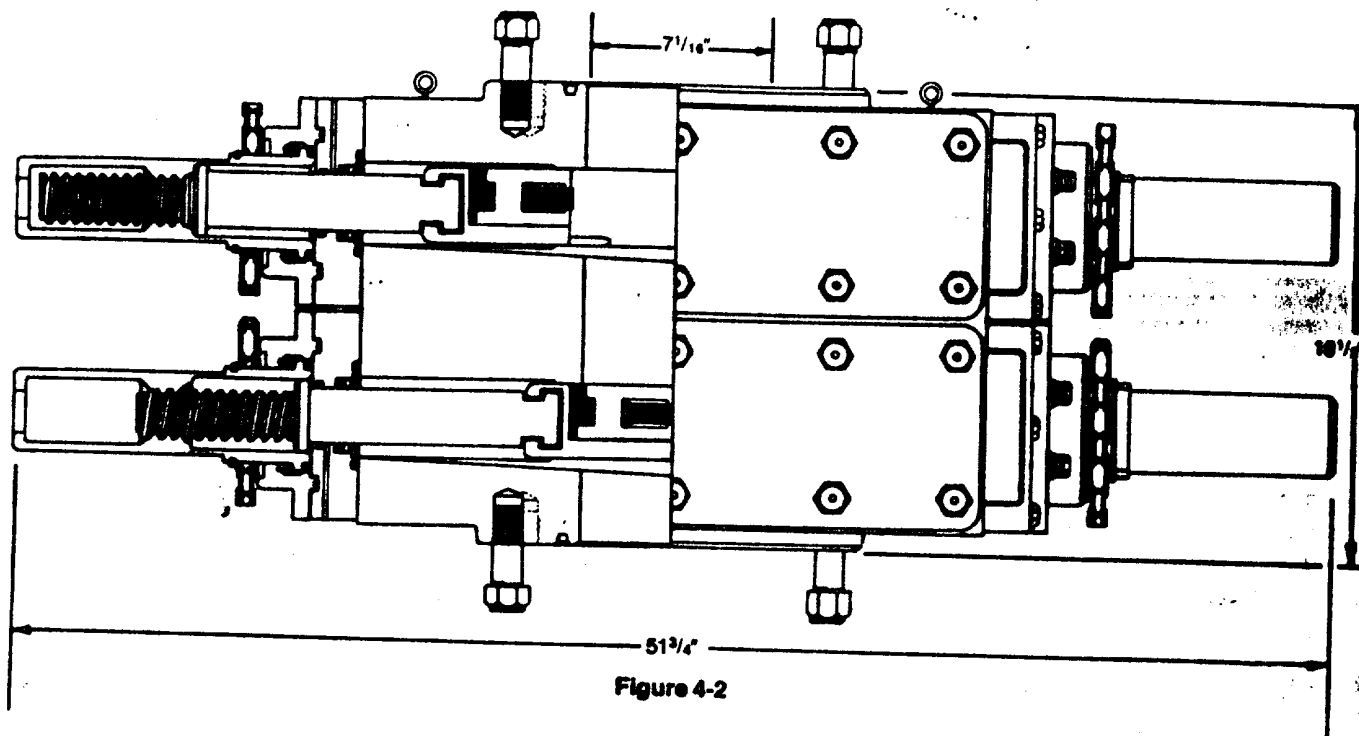
Date Surveyed

SEPTEMBER 12, 1985

Registered Professional Engineer
and or Land Surveyor

John W. West
Certificate No

**JOHN W. WEST, 676
RONALD J. EIDSON, 3239**


Figure 4-2

DIMENSIONS AND WEIGHTS

		Manual
Weight	Single (pounds)	1,272
	Double (pounds)	2,335
Overall height, less studs	Single (inches)	10
	Double (inches)	18 1/2
Overall length (inches)		51 3/4
Overall width, less handwheel (inches)		20 1/4
Opening through preventer (inches)		7 1/16
Working pressure (psi)		3,000
Test pressure (psi)		6,000
Handwheel diameter (inches)		20
Ring joint gasket API number		R-45

SUP Exhibit "F"
 Sketch of Blowout Preventer
 Marbob Energy Corporation
 M. Dodd "B" Fed. Well #54
 NW 1/4 NW 1/4 Sec. 14 -17S-29E

SUPPLEMENTAL DRILLING DATA

MARBOB ENERGY CORPORATION
WELL #54 M. DODD "B" FEDERAL
NW1/4NW1/4 SEC. 14-17S-29E
EDDY COUNTY, NEW MEXICO
(DEVELOPMENT WELL)

1. SURFACE FORMATION: Quaternary.

2. ESTIMATED TOPS OF GEOLOGIC MARKERS:

Salt	360'	Queen	1815'
Base Salt	780'	Grayburg	2140'
Yates	930'	San Andres	2510'
Seven Rivers	1145'	Glorietta	3900'

3. ANTICIPATED POROSITY ZONES:

Water	Above 180'
Oil	2350 - 4500'

4. CASING DESIGN:

SIZE	INTERVAL	WEIGHT	GRADE	JOINT	CONDITION
8 5/8"	0-350'	24.0#	K-55	STC	New
5 1/2"	0-4500'	15.5#	K-55	STC	New

5. SURFACE CONTROL EQUIPMENT: A double ram-type BOP will be used.

6. CIRCULATING MEDIUM:

0 - 350' Fresh water mud with gel or lime as needed for viscosity control.

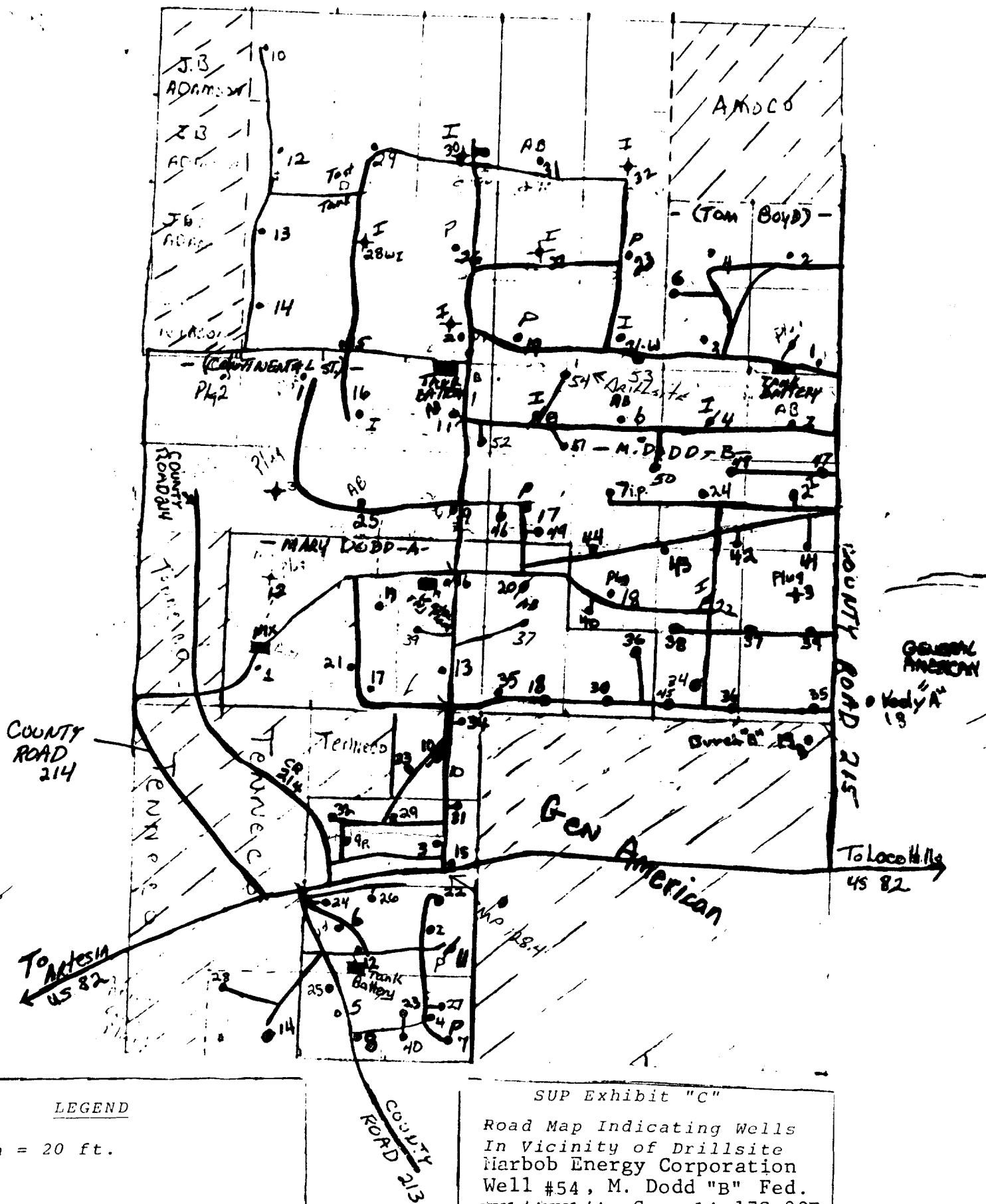
350' - 4500' Salt water mud, conditioned as necessary for control of viscosity and water loss or gain.

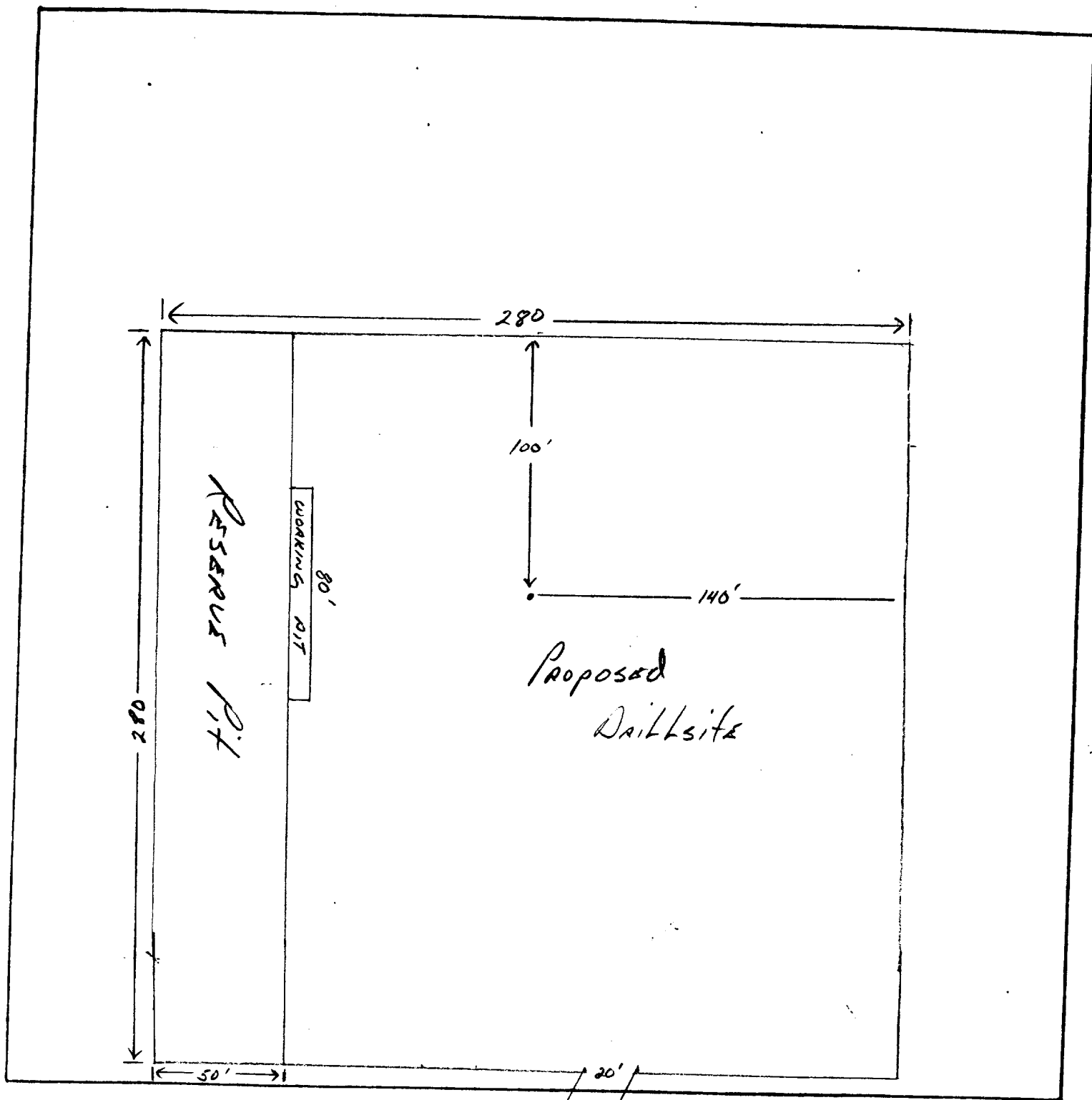
7. AUXILIARY EQUIPMENT: Drill string safety valve.

8. LOGGING PROGRAM: CNL-FDC W/GR Log will be run to TD.

9. ABNORMAL PRESSURES, TEMPERATURES OR GASES: A water flow may be encountered in the salt section.

10. ANTICIPATED STARTING DATE: It is planned that operations will commence about October 27, 1985. Duration of drilling, testing and completion operations should be one to four weeks.





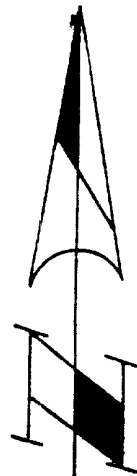
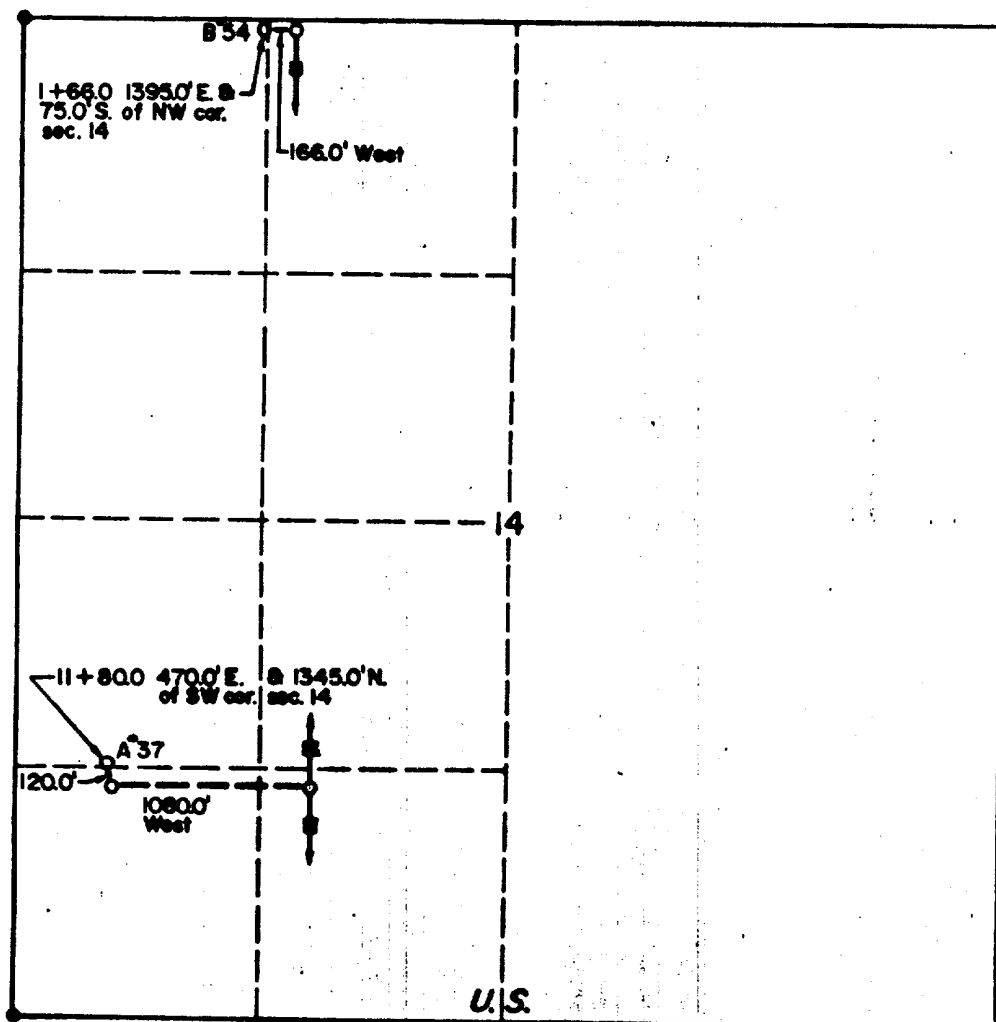
LEGEND

1 cm = 20 ft.

SUP Exhibit "D"

SKETCH OF PROPOSED WELL PAD
 Marbob Energy Corporation
 Well #54, M. Dodd "B" Fed.
 NW1/4NW1/4, Sec. 14-17S-29E

T-17-S



ENGINEER'S STATEMENT

Howard Price states he is by occupation the Engineer employed by the Central Valley Electric Cooperative, Inc., to make the survey of the distribution line as described and shown on this map; that the survey of said works was made under his supervision and under authority, commencing on the 1st day of October, 19 85, and ending on the 1st day of October, 19 85, and that such survey is accurately represented on this map.

Howard Price
Howard Price, Engineer

Subscribed and sworn to before me this
October 24, 19 85.

My Commission Expires:
10/29/88

Paul E. Roberts
Notary Public, Eddy County

This is to certify that Howard Price who subscribed the statement hereon is the person employed by the undersigned applicant to prepare this map, which has been adopted by the applicant as the approximate final location of the works thereby shown, and that this map is filed as a part of the complete application, and in order that the applicant may obtain the benefits of the Act of Congress approved March 4, 1911, and I further certify that the right-of-way herein described is desired for the distribution of electrical power.

Samuel D. Dwyer
Executive Vice-President
Central Valley Electric Cooperative, Inc.

WO #

Marbob Energy Corp. Mary Dodd A37 & B54

CENTRAL VALLEY ELECTRIC COOPERATIVE, INC.

SUP Exhibit "E"
Sketch of Electric Lines

7.2 Power Line

Crossing Federal Land
In

Sec. 14, T-17-S, R-29-E
Eddy County, New Mexico

U.S. R-W

Width: 30.0'

Length: 1346.0' = 0.255 miles
= 81.576 rods

Scale: 1" = 1000'

