

C/SF

Form approved. Budget Bureau No. 42-R1425.

SUBMIT IN TRIPLICATE (Other instructions on reverse side)

NM OIL CONS. COMMISSION. UNITED STATES DEPARTMENT OF THE INTERIOR GEOLOGICAL SURVEY

30-015-25461

RECEIVED BY NOV 7 1985 ARTESIA OFFICE

APPLICATION FOR PERMIT TO DRILL, DEEPEN, OR PLUG BACK

DRILL [X] DEEPEN [ ] PLUG BACK [ ] OIL WELL [X] GAS WELL [ ] OTHER [ ] SINGLE ZONE [X] MULTIPLE ZONE [ ]

1. NAME OF OPERATOR: Marbob Energy Corporation

2. ADDRESS OF OPERATOR: P.O. Drawer 217, Artesia, NM 88210

4. LOCATION OF WELL (Report location clearly and in accordance with any State requirements.): At surface 330 FSL 1345 FEL At proposed prod. zone Same

14. DISTANCE IN MILES AND DIRECTION FROM NEAREST TOWN OR POST OFFICE: 20 air miles east of Artesia, NM 88210

18. DISTANCE FROM PROPOSED LOCATION TO NEAREST PROPERTY OR LEASE LINE, FT. (Also to nearest drlg. unit line, if any): 330'

16. NO. OF ACRES IN LEASE: 160

17. NO. OF ACRES ASSIGNED TO THIS WELL: 40

18. DISTANCE FROM PROPOSED LOCATION TO NEAREST WELL, DRILLING, COMPLETED, OR APPLIED FOR, ON THIS LEASE, FT.: 660'

19. PROPOSED DEPTH: 4500'

20. ROTARY OR CABLE TOOLS: Rotary

21. ELEVATIONS (Show whether DF, RT, GR, etc.): 3635.2'

22. APPROX. DATE WORK WILL START: 11/4/85

PROPOSED CASING AND CEMENTING PROGRAM

Table with 5 columns: SIZE OF HOLE, SIZE OF CASING, WEIGHT PER FOOT, SETTING DEPTH, QUANTITY OF CEMENT. Rows show hole sizes of 12 1/4" and 7 7/8" with corresponding casing sizes and cement quantities.

Pay zone will be selectively perforated and stimulated as needed for optimum production.

- Attached are: 1. Location & acreage dedication plat 2. Supplemental drilling data 3. Surface use plan



Post ID-1 11-15-85 NL & API

IN ABOVE SPACE DESCRIBE PROPOSED PROGRAM: If proposal is to deepen or plug back, give data on present productive zone and proposed new productive zone. If proposal is to drill or deepen directionally, give pertinent data on subsurface locations and measured and true vertical depths. Give blowout preventer program, if any.

24. SIGNED [Signature] TITLE Production Clerk DATE 10/23/85

(This space for Federal or State office use)

PERMIT NO. [ ] APPROVAL DATE [ ]

APPROVED BY [ ] TITLE [ ] DATE 11-6-85

CONDITIONS OF APPROVAL, IF ANY:

Subject to Unorthodox Like Approval by State Location

\*See Instructions On Reverse Side

APPROVAL SUBJECT TO GENERAL REQUIREMENTS AND SPECIAL STIPULATIONS ATTACHED

NSL-2179

Appv. 11-1-85

NEW MEXICO OIL CONSERVATION COMMISSION  
WELL LOCATION AND ACREAGE DEDICATION PLAT

Form C-102  
Supersedes C-128  
Effective 1-1-65

All distances must be from the outer boundaries of the Section.

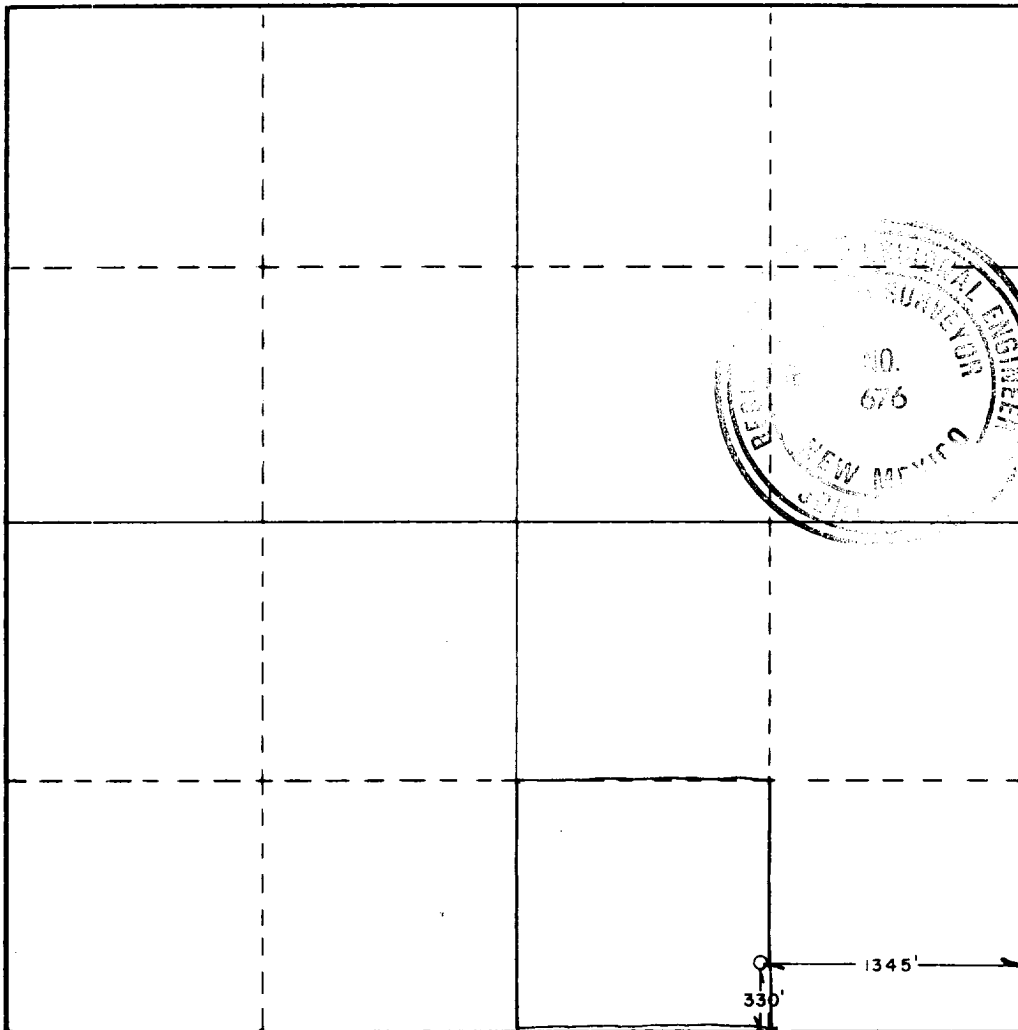
Operator MARBOB ENERGY CORP.		Lease BOYD DODD			Well No. 7
Unit Letter 0	Section 11	Township 17 SOUTH	Range 29 EAST	County EDDY	
Actual Footage Location of Well: 330 feet from the SOUTH line and 1345 feet from the EAST line					
Ground Level Elev. 3635.2'	Producing Formation San Andres		Pool Grbg Jackson SR Q Gb SA	Dedicated Acreage: 40 Acres	

1. Outline the acreage dedicated to the subject well by colored pencil or hachure marks on the plat below.
2. If more than one lease is dedicated to the well, outline each and identify the ownership thereof (both as to working interest and royalty).
3. If more than one lease of different ownership is dedicated to the well, have the interests of all owners been consolidated by communitization, unitization, force-pooling, etc?

Yes  No If answer is "yes," type of consolidation \_\_\_\_\_

If answer is "no," list the owners and tract descriptions which have actually been consolidated. (Use reverse side of this form if necessary.) \_\_\_\_\_

No allowable will be assigned to the well until all interests have been consolidated (by communitization, unitization, forced-pooling, or otherwise) or until a non-standard unit, eliminating such interests, has been approved by the Commission.



CERTIFICATION

I hereby certify that the information contained herein is true and complete to the best of my knowledge and belief.

*DeNette Morriss*

Name  
DeNette Morriss  
Position  
Production Clerk  
Company  
Marbob Energy Corporation  
Date  
10/23/85

I hereby certify that the well location shown on this plat was plotted from field notes of actual surveys made by me or under my supervision, and that the same is true and correct to the best of my knowledge and belief.

Date Surveyed  
OCTOBER 10, 1985

Registered Professional Engineer  
and/or Land Surveyor

*John W West*

Certificate No. JOHN W. WEST, 676  
RONALD J. EIDSON, 3239



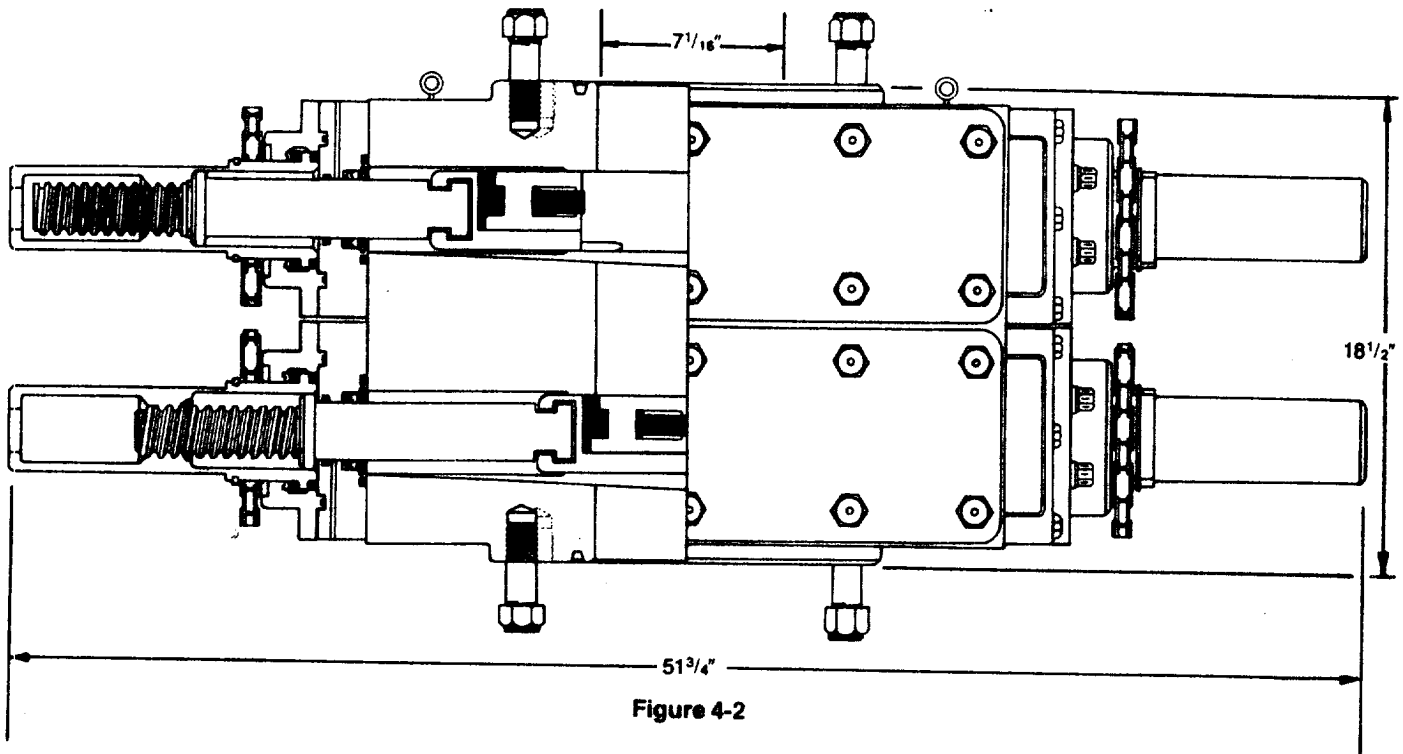


Figure 4-2

## DIMENSIONS AND WEIGHTS

		<b>Manual</b>
Weight	Single (pounds)	1,272
	Double (pounds)	2,335
Overall height, less studs	Single (inches)	10
	Double (inches)	18 <sup>1</sup> / <sub>2</sub>
Overall length (inches)		51 <sup>3</sup> / <sub>4</sub>
Overall width, less handwheel (inches)		20 <sup>1</sup> / <sub>4</sub>
Opening through preventer (inches)		7 <sup>1</sup> / <sub>16</sub>
Working pressure (psi)		3,000
Test pressure (psi)		6,000
Handwheel diameter (inches)		20
Ring joint gasket API number		R-45

SUP Exhibit "F"  
Sketch of Blowout Preventer

Marbob Energy Corporation  
Boyd Dodd Federal Well #7  
SW1/4SE1/4 Sec. 11-17S-29E

SUPPLEMENTAL DRILLING DATA

MARBOB ENERGY CORPORATION  
WELL #7 BOYD DODD FEDERAL  
SW1/4SE1/4 SEC. 11-17S-29E  
EDDY COUNTY, NEW MEXICO  
(DEVELOPMENT WELL)

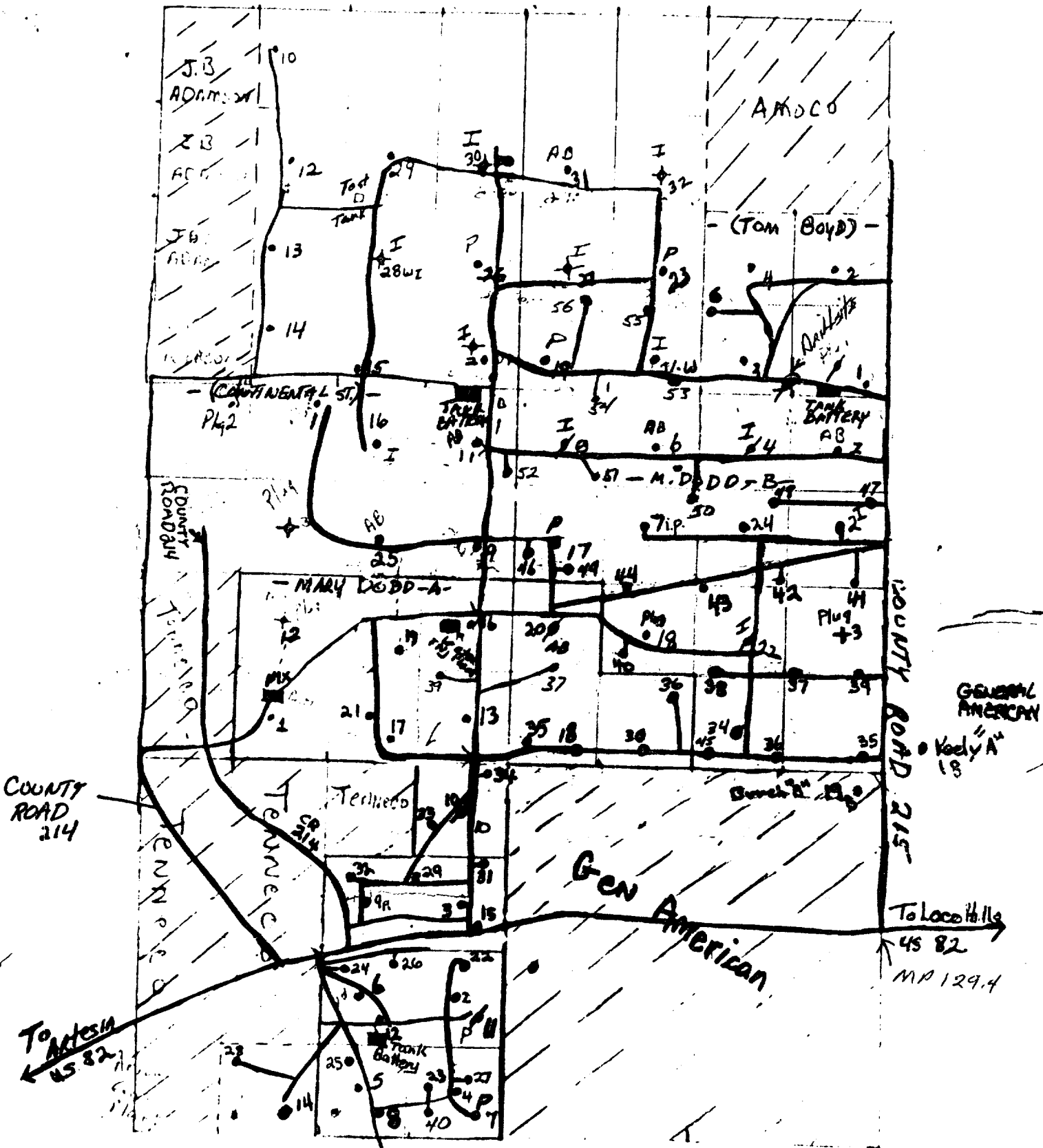
1. SURFACE FORMATION: Quaternary.
2. ESTIMATED TOPS OF GEOLOGIC MARKERS:

Salt	360'	Queen	1815'
Base Salt	780'	Grayburg	2140'
Yates	930'	San Andres	2510'
Seven Rivers	1145'	Glorietta	3900'
3. ANTICIPATED POROSITY ZONES:

Water	Above 180'
Oil	2350 - 4500'
4. CASING DESIGN:

<u>SIZE</u>	<u>INTERVAL</u>	<u>WEIGHT</u>	<u>GRADE</u>	<u>JOINT</u>	<u>CONDITION</u>
8 5/8"	0-350'	24.0#	K-55	STC	New
5 1/2"	0-4500'	15.5#	K-55	STC	New
5. SURFACE CONTROL EQUIPMENT: A double ram-type BOP will be used. (See diagram attached as Exhibit "E")
6. CIRCULATING MEDIUM:

0 - 350'	Fresh water mud with gel or lime as needed for viscosity control.
350'- 4500'	Salt water mud, conditioned as necessary for control of viscosity and water loss or gain.
7. AUXILIARY EQUIPMENT: Drill string safety valve.
8. LOGGING PROGRAM: CNL-FDC W/GR Log will be run to TD.
9. ABNORMAL PRESSURES, TEMPERATURES OR GASES: A water flow may be encountered in the salt section.
10. ANTICIPATED STARTING DATE: It is planned that operations will commence about November 4, 1985. Duration of drilling, testing and completion operations should be one to four weeks.

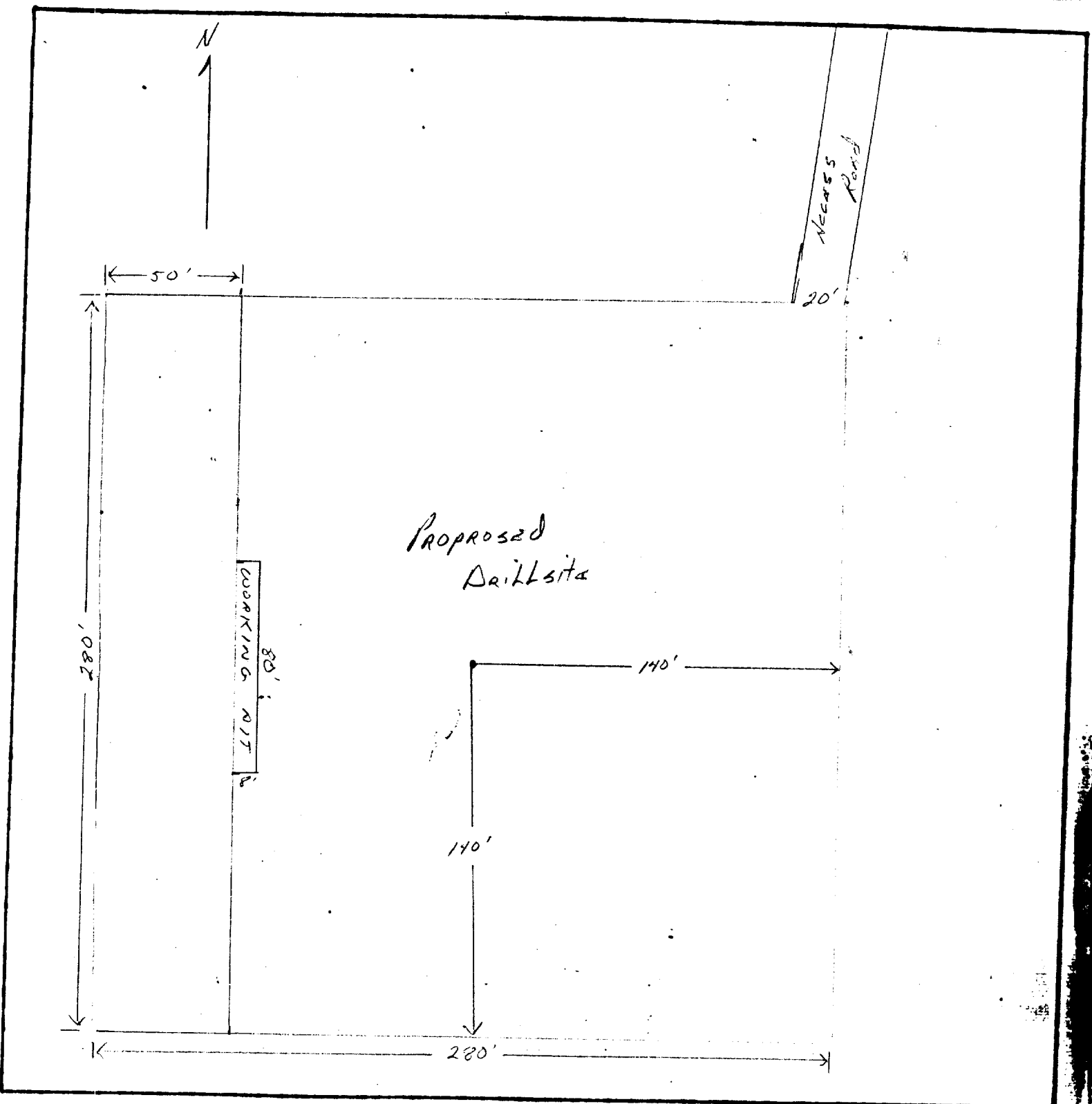


LEGEND

1cm = 20 ft.

SUP Exhibit "C"

Road Map Indicating Wells  
 In Vicinity of Drillsite  
 Marbob Energy Corporation  
 Boyd Dodd Federal Well #7  
 SW1/4SE1/4 Sec. 11-17S-29E



**LEGEND**

1cm = 20 ft.

**SUP Exhibit "D"**

**SKETCH OF PROPOSED WELL PAD**  
 Marbob Energy Corporation  
 Boyd Dodd Federal Well #7  
 SW1/4SE1/4 Sec. 11-17S-29#