

NM OIL CONS. DISTRICT 3
SUBMIT IN 1. LOCATE*
Drawer 10 (Other instructions on reverse side)
Artesia, NM 88210
UNITED STATES
DEPARTMENT OF THE INTERIOR
BUREAU OF LAND MANAGEMENT

Form approved.
Budget Bureau No. 1004-0136
Expires August 31, 1985
30-015-25683

APPLICATION FOR PERMIT TO DRILL, DEEPEN, OR PLUG BACK

1a. TYPE OF WORK

DRILL ☒

DEEPEN ☐ BY PLUG BACK ☐

b. TYPE OF WELL

OIL WELL ☒

GAS WELL ☐

OTHER ☐

2. NAME OF OPERATOR

Burnett Oil Co., Inc.

3. ADDRESS OF OPERATOR

1500 InterFirst Tower, Fort Worth, Texas 76102

4. LOCATION OF WELL (Report location clearly and in accordance with any state requirements.)
At surface

Unit Letter B, 660' FNL, 1980' FEL, Sec. 14, 17S, 30E
At proposed prod. zone

Same

14. DISTANCE IN MILES AND DIRECTION FROM NEAREST TOWN OR POST OFFICE*

4 miles NE of Loco Hills, NM

15. DISTANCE FROM PROPOSED*

LOCATION TO NEAREST
PROPERTY OR LEASE LINE, FT.
(Also to nearest drig. unit line, if any)

660'

16. NO. OF ACRES IN LEASE

600

17. NO. OF ACRES ASSIGNED
TO THIS WELL

40

18. DISTANCE FROM PROPOSED LOCATION*
TO NEAREST WELL, DRILLING, COMPLETED,
OR APPLIED FOR, ON THIS LEASE, FT.

1960'

19. PROPOSED DEPTH

3550'

20. ROTARY OR CABLE TOOLS

Rotary

21. ELEVATIONS (Show whether DF, RT, GR, etc.)

~~3714~~ GR 3713.6

22. APPROX. DATE WORK WILL START*

December 26, 1986

23.

PROPOSED CASING AND CEMENTING PROGRAM

SIZE OF HOLE	SIZE OF CASING	WEIGHT PER FOOT	SETTING DEPTH	QUANTITY OF CEMENT
12 1/4"	9-5/8" OD	53.50	400'	±300 sks Cl. C (circulate)
7-7/8"	5 1/2" OD	17	3550'	±500 sks Cl. C. If water flows encountered, cmtg. program will vary.

A 12 1/4" surface hole will be drilled to the Rustler anhydrite. 9-5/8" casing will be run and cemented to surface. After testing casing, a 7-7/8" OD hole will be drilled through the Jackson zone at ± 3550'. Open hole logs will be run (if no water flowing) and if commercial, 5 1/2" casing will be run and cemented back to the base of the salt at ±1250'. BOP equipment will be double ram, tested to 3000 psi before drilling underneath the surface pipe.

IN ABOVE SPACE DESCRIBE PROPOSED PROGRAM: If proposal is to deepen or plug back, give data on present productive zone and proposed new productive zone. If proposal is to drill or deepen directionally, give pertinent data on subsurface locations and measured and true vertical depths. Give blowout preventer program, if any.

24.

SIGNED

John C. McPhaul

TITLE Production Superintendent

DATE 10/30/86

(This space for Federal or State office use)

PERMIT NO.

APPROVAL DATE

APPROVED BY

Ray Burt

TITLE

DATE

11-26-86

CONDITIONS OF APPROVAL, IF ANY:

*See Instructions On Reverse Side

Title 18 U.S.C. Section 1001, makes it a crime for any person knowingly and willfully to make to any department or agency of the United States any false, fictitious or fraudulent statements or representations as to any matter within its jurisdiction.



NEW MEXICO OIL CONSERVATION COMMISSION
WELL LOCATION AND ACREAGE DEDICATION PLAT

Form C-102
Supersedes C-128
Effective 1-1-65

All distances must be from the outer boundaries of the Section

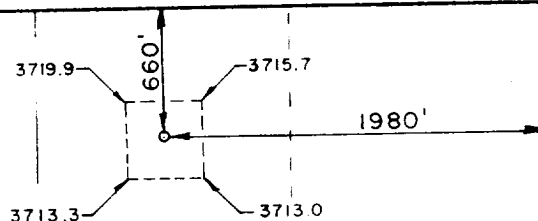
Operator Burnett Oil Company, Inc. ✓			Lease Gissler "A"		Well No. #13
Unit Letter B	Section 14	Township 17 South	Range 30 East	County Eddy	
Actual Footage Location of Well: 660 feet from the North line and 1980 feet from the East line					
Ground Level Elev. 3713.6	Producing Formation GB-SA	Pool Grayburg Jackson SR/AN/GB/SA Square Lake		Dedicated Acreage: 40 Acres	

- Outline the acreage dedicated to the subject well by colored pencil or hachure marks on the plat below.
- If more than one lease is dedicated to the well, outline each and identify the ownership thereof (both as to working interest and royalty).
- If more than one lease of different ownership is dedicated to the well, have the interests of all owners been consolidated by communitization, unitization, force-pooling, etc?

☐ Yes ☐ No If answer is "yes," type of consolidation _____

If answer is "no," list the owners and tract descriptions which have actually been consolidated. (Use reverse side of this form if necessary.) _____

No allowable will be assigned to the well until all interests have been consolidated (by communitization, unitization, forced-pooling, or otherwise) or until a non-standard unit, eliminating such interests, has been approved by the Commission.



CERTIFICATION

I hereby certify that the information contained herein is true and complete to the best of my knowledge and belief.

Name

John C. McPhaul

Position

Production Superintendent

Company

Burnett Oil Co., Inc.

Date

10/31/86

I hereby certify that the well location shown on this plat was plotted from field notes of actual surveys made by me or under my supervision, and that the same is true and correct to the best of my knowledge and belief.

Date Surveyed

October 21, 1986

Registered Professional Engineer and/or Land Surveyor

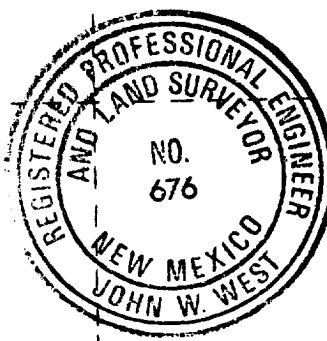
John W. West

Certificate No. JOHN W. WEST,

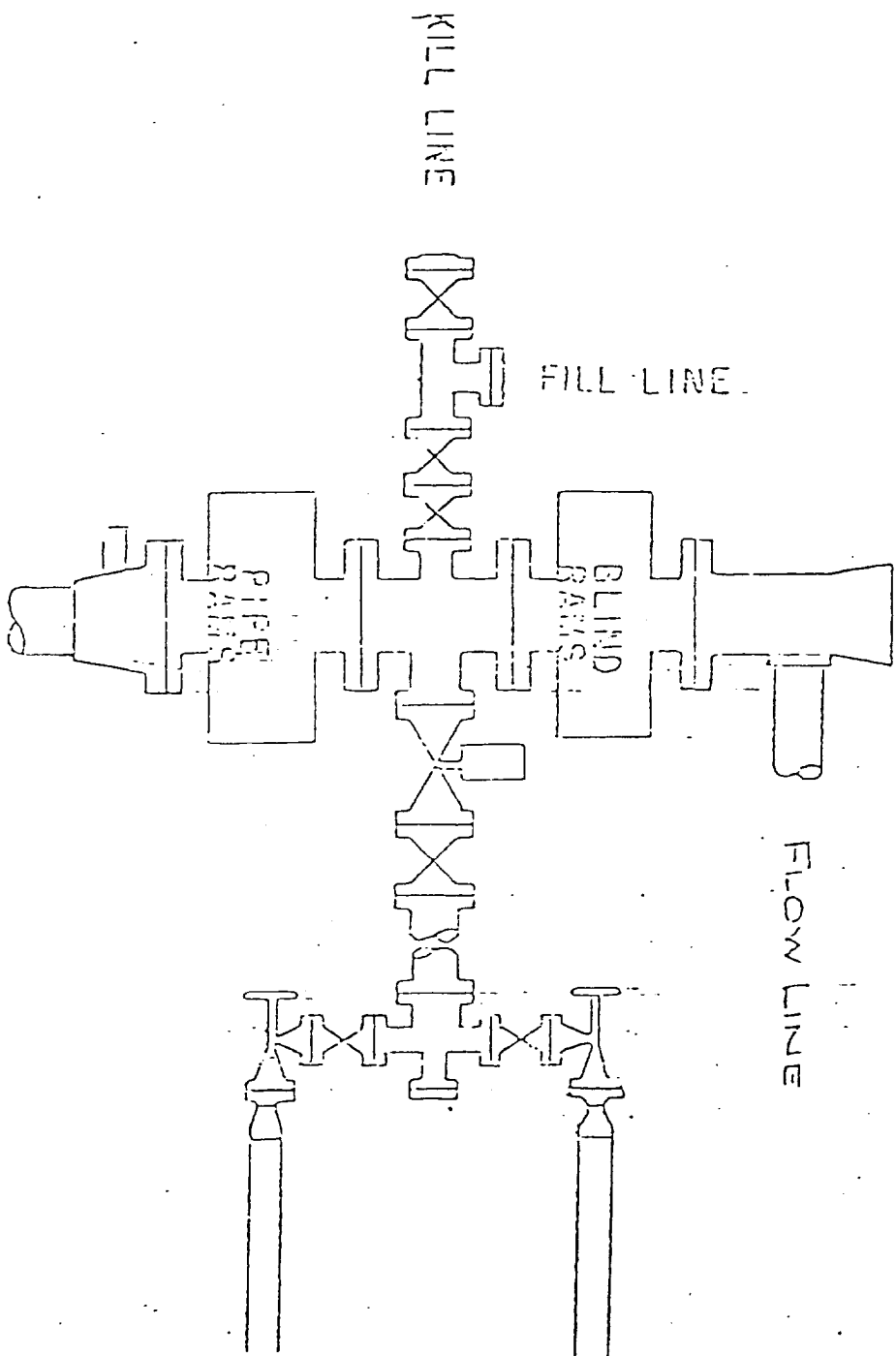
676

RONALD J. EIDSON,

3239



BURNETT OIL CO., INC.
BLOWOUT PREVENTER SPECIFICATION
3000 PSI DOUBLE RAM



The BOP and related control equipment will be tested to 3000 psi before drilling out below surface pipe setting depth.

DRILLING PLAN

covering

BURNETT OIL CO., INC.
Lease #LC 029338
Gissler "A" #13
Unit Ltr. "B"
660' FNL, 1980' FEL
Sec. 14, T17S, R30E
Eddy Co., New Mexico

(A) DRILLING PROGRAM

(1) Estimated tops of geologic markers

<i>Alluvium</i>	<i>Surface</i>
Anhydrite	360'
Salt	410'
Base Salt	1200'
Red Sand	2270'
Grayburg	2670'
San Andres	2965'

(2) Estimated depths of producing formations

Fresh Water	None
Saltwater flows	1350', 2670'*
Oil & Gas	2920', 3070', 3350'**

*If large waterflows are encountered, drilling will continue to TD. Stage cementers will be run just below flows, and casing will be cemented in multiple stages in order to confine water flows to original strata.

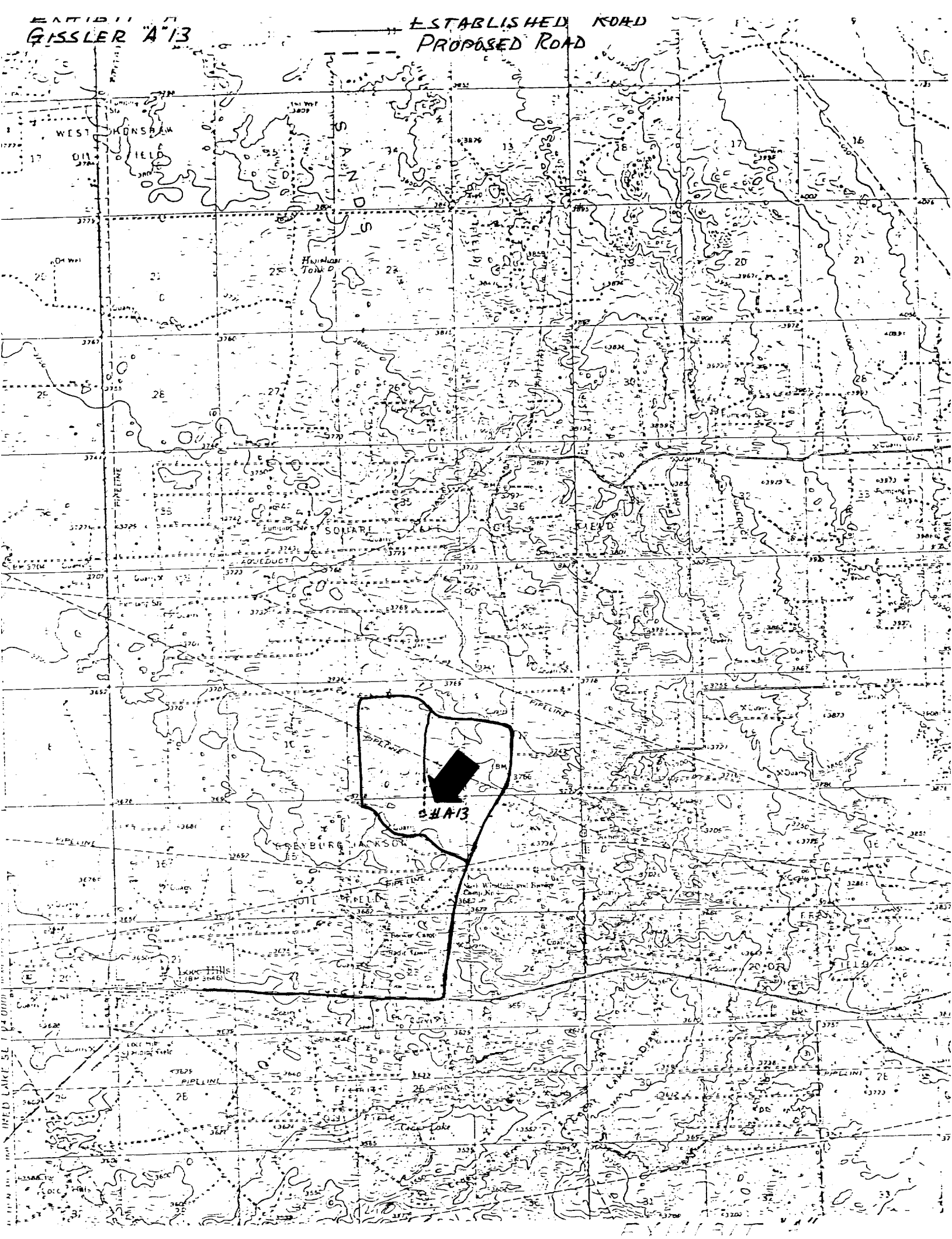
**Oil and gas bearing zones will be confined by cementing. Productive intervals will be perforated through casing and produced in a conventional manner.

(3) Blowout Preventer Specifications

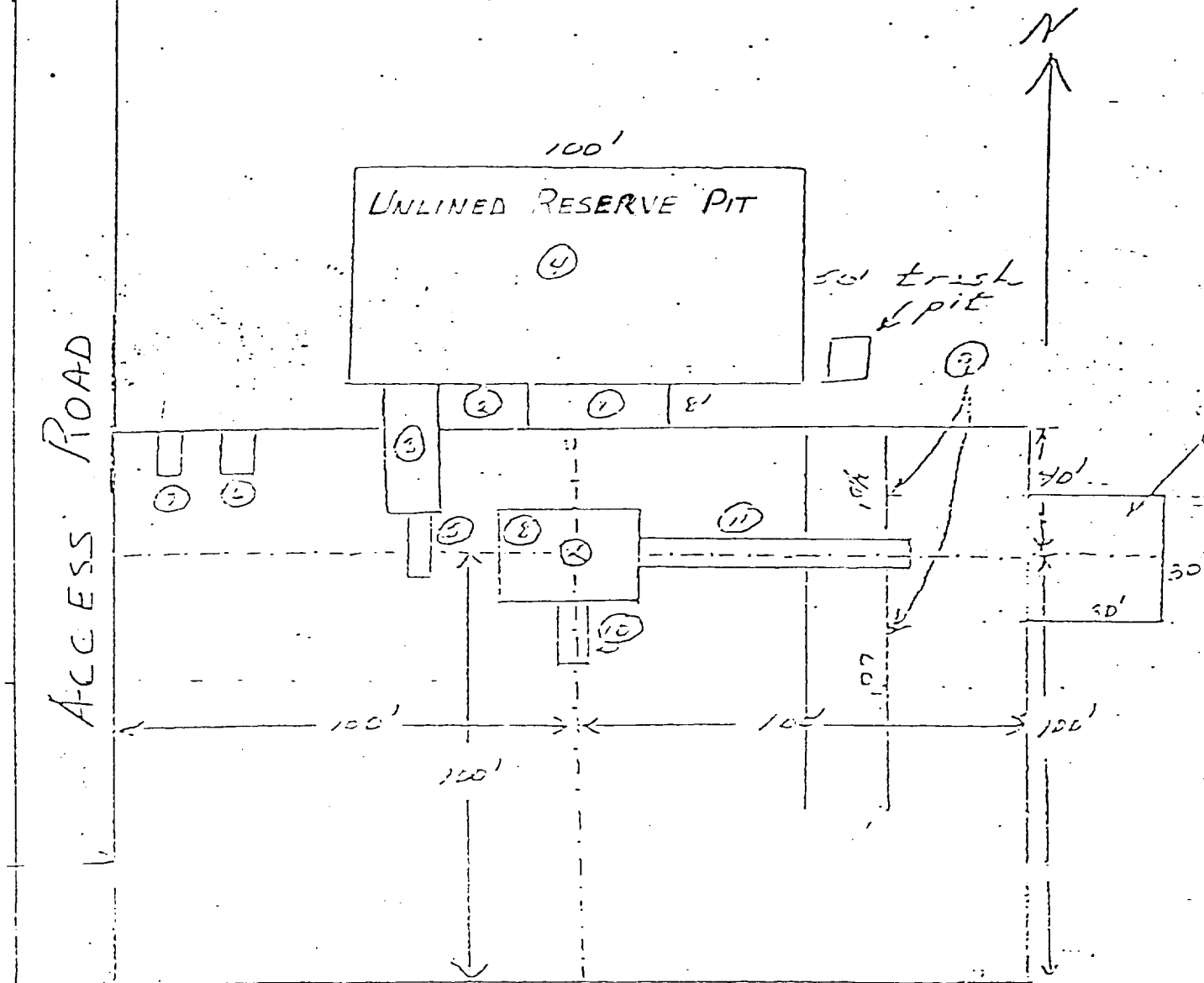
3000 psi Double Ram Unit with hydraulic closing equipment. The preventer will be tested before drilling out below surface pipe setting depth. The exact description of the preventer and related equipment depends upon the successful drilling contractor, who has not yet been selected. (See schematic Exhibit "D"). No high pressure hydrocarbon zones are anticipated.

ESTABLISHED
GISSLER A-13

ESTABLISHED ROAD
PROPOSED ROAD



BURNETT OIL CO. INC. TYPICAL DRILL SITE LAYOUT



- | | |
|--------------------------|----------------|
| ① Shale Pit 30' x 8' | ⑥ Water Tank |
| ② Mud Pit 20' x 8' | ⑦ Fuel Tank |
| ③ Suction Pit 30' x 8' | ⑧ Rig |
| ④ Reserve Pit 100' x 50' | ⑨ Pipe Racks |
| ⑤ Pump | ⑩ Dog House |
| | ⑪ Cat Walk 60' |
| | ⑫ Stinger |

Schaeffer Type E 10" Series 900 Hydraulic BOP. The waste and debris from this well will be disposed of in a reserve pit and covered up.

