

UNITED STATES
DEPARTMENT OF THE INTERIOR
GEOLOGICAL SURVEY

30-015-26231

5. LEASE DESIGNATION AND SERIAL NO.

LC-049998(A)

6. IF INDIAN, ALLOTTEE OR TRIBE NAME

7. UNIT AGREEMENT NAME

8. FARM OR LEASE NAME

Foster Eddy

9. WELL NO.

11

10. FIELD AND POOL, OR WILDCAT

Grbg Jackson SR Q Grbg SA

11. SEC., T., R., M., OR BLE.
AND SURVEY OR AREA

Sec. 17-T17S-R31E

12. COUNTY OR PARISH 13. STATE

Eddy

NM

APPLICATION FOR PERMIT TO DRILL, DEEPEN, OR PLUG BACK

1a. TYPE OF WORK

DRILL ☒DEEPEN ☐RECEIVED
PLUG BACK ☐

b. TYPE OF WELL

OIL
WELL ☒GAS
WELL ☐

OTHER

SINGLE
ZONE ☒MULTIPLE
ZONE ☐

2. NAME OF OPERATOR

Marbob Energy Corporation

3. ADDRESS OF OPERATOR

P.O. Drawer 217, Artesia, NM 88210

4. LOCATION OF WELL (Report location clearly and in accordance with any State requirements.)

At surface

1650 FSL 2160 FEL

At proposed prod. zone

same

14. DISTANCE IN MILES AND DIRECTION FROM NEAREST TOWN OR POST OFFICE*

28 air miles east of Artesia, NM

15. DISTANCE FROM PROPOSED*

LOCATION TO NEAREST
PROPERTY OR LEASE LINE, FT.
(Also to nearest drlg. unit line, if any)

1650'

16. NO. OF ACRES IN LEASE

280

17. NO. OF ACRES ASSIGNED
TO THIS WELL

40

18. DISTANCE FROM PROPOSED LOCATION*

TO NEAREST WELL, DRILLING, COMPLETED,
OR APPLIED FOR, ON THIS LEASE, FT.

19. PROPOSED DEPTH

6000'

20. ROTARY OR CABLE TOOLS

Rotary

21. ELEVATIONS (Show whether DF, RT, GR, etc.)

3697.2' GR

22. APPROX. DATE WORK WILL START*

10/1/89

23.

PROPOSED CASING AND CEMENTING PROGRAM

SIZE OF HOLE	SIZE OF CASING	WEIGHT PER FOOT	SETTING DEPTH	QUANTITY OF CEMENT
12 1/4"	8 5/8"	24#	450'	Sufficient to circ 1500 sx
7 7/8"	5 1/2"	17#	6000'	Tie back to surf csg

Pay zone will be selectively perforation & stimulated
as needed for optimum production.Attached are: 1. Location & dedication plat
2. Supplemental drilling data
3. Surface Use PlanAPPROVAL SUBJECT TO
GENERAL REQUIREMENTS AND
SPECIAL STIPULATIONS
ATTACHED

IN ABOVE SPACE DESCRIBE PROPOSED PROGRAM: If proposal is to deepen or plug back, give data on present productive zone and proposed new productive zone. If proposal is to drill or deepen directionally, give pertinent data on subsurface locations and measured and true vertical depths. Give blowout preventer program, if any.

24.

SIGNED

Rhonda Nelson

TITLE Production Clerk

DATE 8/29/89

(This space for Federal or State office use)

PERMIT NO.

APPROVAL DATE

APPROVED BY

CONDITIONS OF APPROVAL, IF ANY:

TITLE

AREA MANAGER

CAGLESDAD RESOURCE AREA

DATE

11-3-89

OIL CONSERVATION DIVISION

P.O. Box 2088

Santa Fe, New Mexico 87504-2088

DISTRICT 1

P.O. Box 1980, Hobbs, NM 88240

DISTRICT II

P.O. Drawer DD, Artesia, NM 88210

DISTRICT III

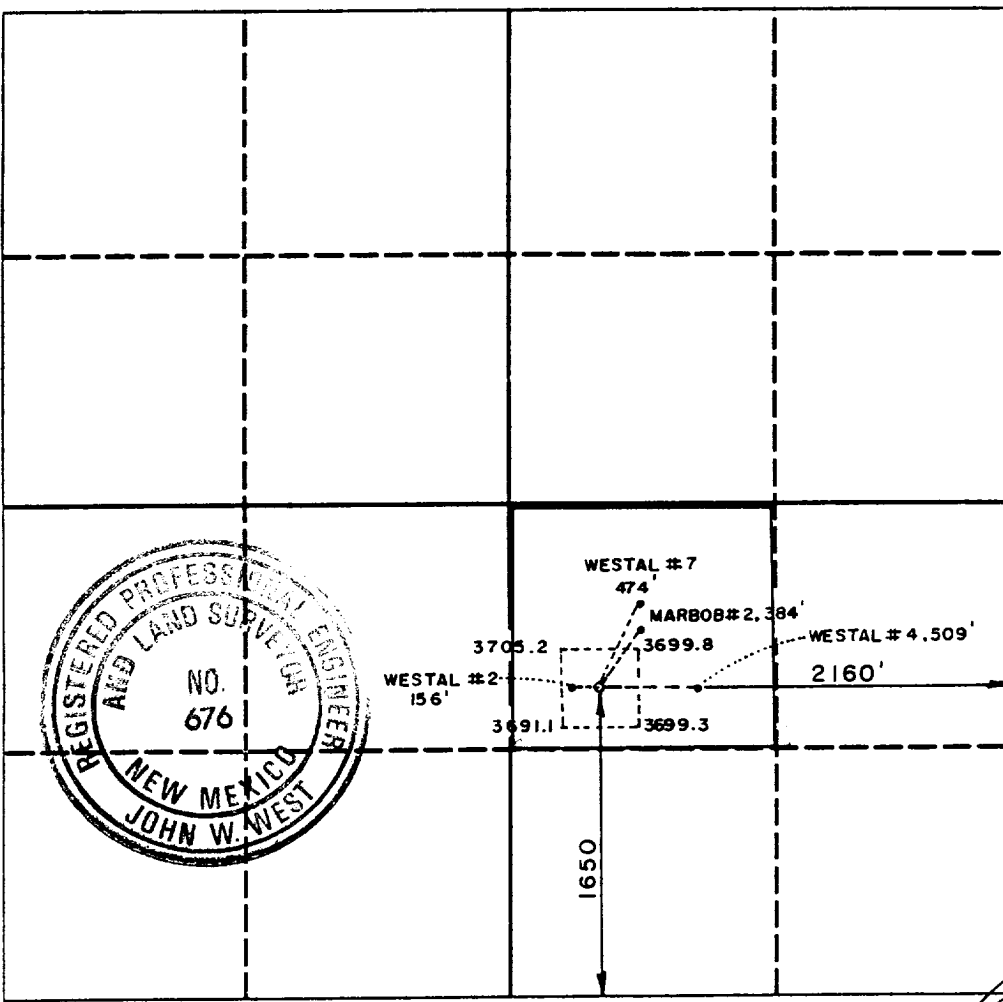
1000 Rio Brazos Rd., Aztec, NM 87410

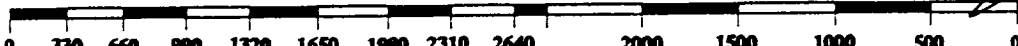
WELL LOCATION AND ACREAGE DEDICATION PLAT

All Distances must be from the outer boundaries of the section

Operator Marbob Energy Corporation		Lease Foster Eddy		Well No. 11
Unit Letter J	Section 17	Township 17 South	Range 31 East NMPM	County Eddy
Actual Footage Location of Well:				
1650 feet from the South line and 2160 feet from the East line				
Ground level Elev. 3697.2	Producing Formation San Andres		Pool Grbg Jackson SR Q Grbg SA	Dedicated Acreage: 40 Acres

1. Outline the acreage dedicated to the subject well by colored pencil or hatchure marks on the plat below.
2. If more than one lease is dedicated to the well, outline each and identify the ownership thereof (both as to working interest and royalty).
3. If more than one lease of different ownership is dedicated to the well, have the interest of all owners been consolidated by communitization, unitization, force-pooling, etc.?
- ☐ Yes ☐ No If answer is "yes" type of consolidation _____
- If answer is "no" list the owners and tract descriptions which have actually been consolidated. (Use reverse side of this form if necessary. _____)
- No allowable well be assigned to the well until all interests have been consolidated (by communitization, unitization, forced-pooling, or otherwise) or until a non-standard unit, eliminating such interest, has been approved by the Division.

	<div style="border: 1px solid black; padding: 5px;"> <p>OPERATOR CERTIFICATION</p> <p>I hereby certify that the information contained herein is true and complete to the best of my knowledge and belief.</p> <p>Signature: <u>Rhonda Nelson</u></p> <p>Printed Name: <u>Rhonda Nelson</u></p> <p>Position: <u>Production Clerk</u></p> <p>Company: <u>Marbob Energy Corporation</u></p> <p>Date: <u>August 29, 1989</u></p> </div> <div style="border: 1px solid black; padding: 5px; margin-top: 10px;"> <p>SURVEYOR CERTIFICATION</p> <p>I hereby certify that the well location shown on this plat was plotted from field notes of actual surveys made by me or under my supervision, and that the same is true and correct to the best of my knowledge and belief.</p> <p>Date Surveyed: <u>August 19, 1989</u></p> <p>Signature & Seal of Professional Surveyor: <u>[Signature]</u></p> <p>Certificate No. <u>JOHN W. WEST, 676</u> <u>RONALD J. EIDSON, 3239</u></p> </div>
--	---



SUPPLEMENTAL DRILLING DATA

MARBOB ENERGY CORPORATION
WELL #11 FOSTER EDDY FEDERAL
NW/4 SE/4 SEC. 17-17S-31E
EDDY COUNTY, NEW MEXICO
(DEVELOPMENT WELL)

1. SURFACE FORMATION: Quaternary.

2. ESTIMATED TOPS OF GEOLOGIC MARKERS:

Salt	450'	Queen	2430'
Base Salt	1100'	Grayburg	2804'
Seven Rivers	1340'	San Andres	3134'

3. ANTICIPATED POROSITY ZONES:

Water	Above 180'
Oil	2950' - 6000'

4. CASING DESIGN:

SIZE	INTERVAL	WEIGHT	GRADE	JOINT	CONDITION
8 5/8"	0-450'	24.0#	K-55	STC	New
5 1/2"	0-6000'	17.0#	K-55	STC	New

5. SURFACE CONTROL EQUIPMENT: A double ram-type or annular BOP will be used. (See diagram attached as Exhibit "E")

6. CIRCULATING MEDIUM:

0 - 450' Fresh water mud with gel or lime as needed for viscosity control.

450' - 6000' Salt water mud, conditioned as necessary for control of viscosity and water loss or gain.

7. AUXILIARY EQUIPMENT: Drill string safety valve.

8. LOGGING PROGRAM: CNL-FDC W/GR Log will be run to TD.

9. ABNORMAL PRESSURES, TEMPERATURES OR GASES: A water flow may be encountered in the salt section.

10. ANTICIPATED STARTING DATE: It is planned that operations will commence about October 1, 1989. Duration of drilling, testing and completion operations should be one to four weeks.

SURFACE USE PLAN
FOR
DRILLING, COMPLETION AND PRODUCTION

MARBOB ENERGY CORPORATION
WELL #11 FOSTER EDDY FEDERAL
1650' FSL & 2160' FEL SEC. 17-17S-31E
EDDY COUNTY, NEW MEXICO
(DEVELOPMENT WELL)

This plan is submitted with the application for permit to drill the above described well. The purpose of the plan is to describe the location of the proposed development well, the proposed construction activities and operations plan, the magnitude of surface disturbance involved, and the procedures to be followed in rehabilitating the surface after completion of the operation so that a complete appraisal can be made of the environmental affects associated with the operation.

LOCATED: Approximate 28 air miles east of Artesia,
New Mexico.

FEDERAL LEASE NUMBER: LC 049998 (A)

LEASE ISSUED: June 1, 1968

RECORD LESSEE: Marbob Energy Corporation

OPERATOR'S AUTHORITY: Operating rights owned by Marbob Energy Corporation.

BOND COVERAGE: Lessees \$150,000 nation-wide bond.

ACRES IN LEASE: 280 acres

SURFACE OWNERSHIP: Bureau of Land Management

POOL: Grayburg-Jackson, SR, Q, Gb, SA
(40-acre spacing)

EXHIBITS:

- A. Portion of Lea County Map
- B. Oil & Gas Map
- C. Road Map & Wells in vicinity of
Proposed Drillsite
- D. Sketch of Well Pad
- E. Sketch of BOP

7. WASTE DISPOSAL:

- A. Drill cuttings will be disposed of in the drilling pits.
- B. Drilling fluids will be allowed to evaporate in the drilling pits until the pits are dry.
- C. Water produced during tests will be disposed of in the pits.
- D. Oil produced during tests will be produced into temporary test tanks.
- E. Trash, waste paper, garbage, and junk will be buried in a trash pit and covered with a minimum of 24 inches of dirt. All waste material will be contained to prevent scattering by the wind. Location of the trash pit is shown on Exhibit "D".
- F. All trash and debris will be buried or removed from the wellsite within 45 days after finishing each drilling and/or completion operation.

8. ANCILLARY FACILITIES: None anticipated.

9. WELLSITE LAYOUT: Refer to Exhibit "D" for direction orientation and access.

- A. The wellsite has been surveyed and an area has been staked and flagged.
- B. The dimensions and relative location of the drill pad and pit with respect to the well bore are shown on Exhibit "D".
- C. The location is nearly level.
- D. The well pad will be surfaced with caliche.

10. RESTORATION OF SURFACE:

- A. After completion of drilling and/or completion operations, all equipment and other material not needed for operations will be removed. Pits will be filled and the location cleaned of all trash and junk to leave the wellsite in as aesthetically pleasing a condition as possible.

- B. Any unguarded pits containing fluids will be fenced until they are covered with soil.
- C. After abandonment, all equipment, trash and junk will be removed and the location cleaned. Any special rehabilitation and/or special revegetation requirements of the BLM will be complied with and accomplished as expeditiously as possible.

11. OTHER INFORMATION:

- A. Topography: The undisturbed wellsite is at an elevation of 3697.2 feet. The terrain of the area surrounding the location is relatively flat. Regional slope is to the southwest toward the Pecos River.
- B. Soil: Top soil at the wellsite is sand.
- C. Land Use & Type: The vicinity surrounding the drillsite is semiarid rangeland and its primary use is for production of oil and gas.
- D. Flora: Flora in the vicinity surrounding the drillsite is sparse. It consists primarily of javalina, saltbush, broomweed and mesquite.
- E. Fauna: No wildlife was observed, however fauna for this type of habitat normally consists of lizards, snakes, rabbits, rodents, coyotes, skunks, quail, dove, and other small birds.
- F. Ponds & Streams: None.
- G. Water Wells: The nearest known water well is over 4 miles to the Southwest.
- H. Residences & Other Structures: There are no occupied dwellings within one (1) mile of the proposed drillsite.
- I. Archaeological, Historical & Cultural Sites: An archaeological survey has been conducted by the Pecos Archeological Consultants and a formal report has been or will be furnished directly to BLM upon its completion.

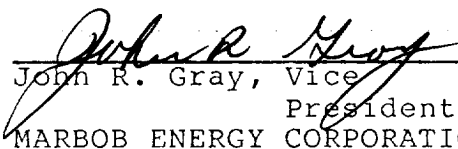
12. OPERATOR'S REPRESENTATIVE: Representatives responsible for assuring compliance with the approved Surface Use Plan:

Mack Chase or John R. Gray
P. O. Drawer 217
Artesia, New Mexico 88210
Phone 505-748-3303

13. CERTIFICATION:

I hereby certify that I, or persons under my direct supervision, have inspected the proposed drillsite and access route; that I am familiar with the conditions which presently exist; that the statements made in this plan are, to the best of my knowledge true and correct; and, that the work associated with the operations proposed herein will be performed by MARBOB ENERGY CORPORATION and its sub-contractors in conformity with this plan and the terms and conditions under which it is approved.

8/30/89
Date


John R. Gray, Vice
President
MARBOB ENERGY CORPORATION

UNITED STATES
DEPARTMENT OF THE INTERIOR
BUREAU OF LAND MANAGEMENT

(ROSWELL)

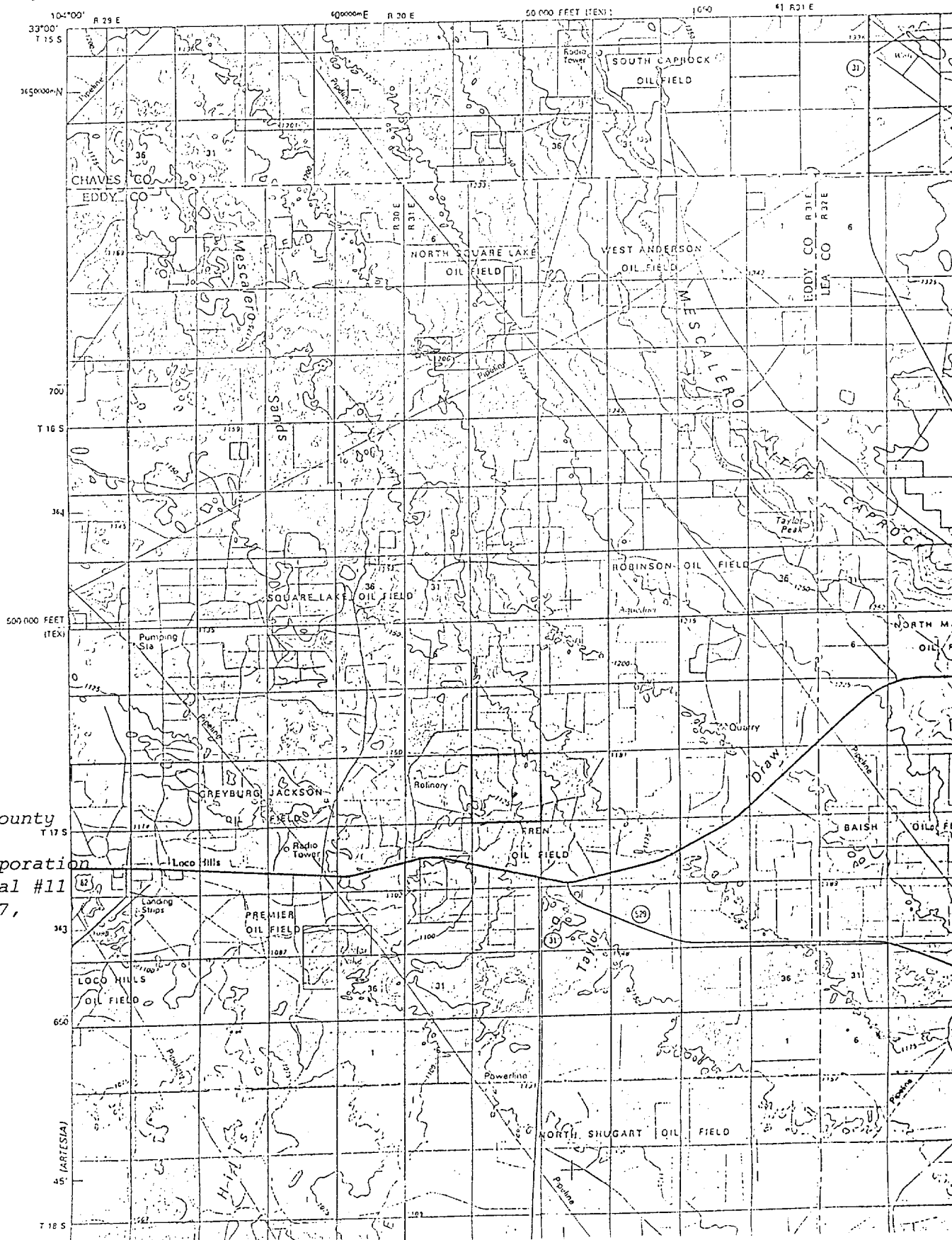


Exhibit A

Portion of Eddy County
Map
Carbob Energy Corporation
Troster Eddy Federal #11
W/4 SE/4, Sec. 17,
T-17S, R-31E
Eddy County, NM

f)



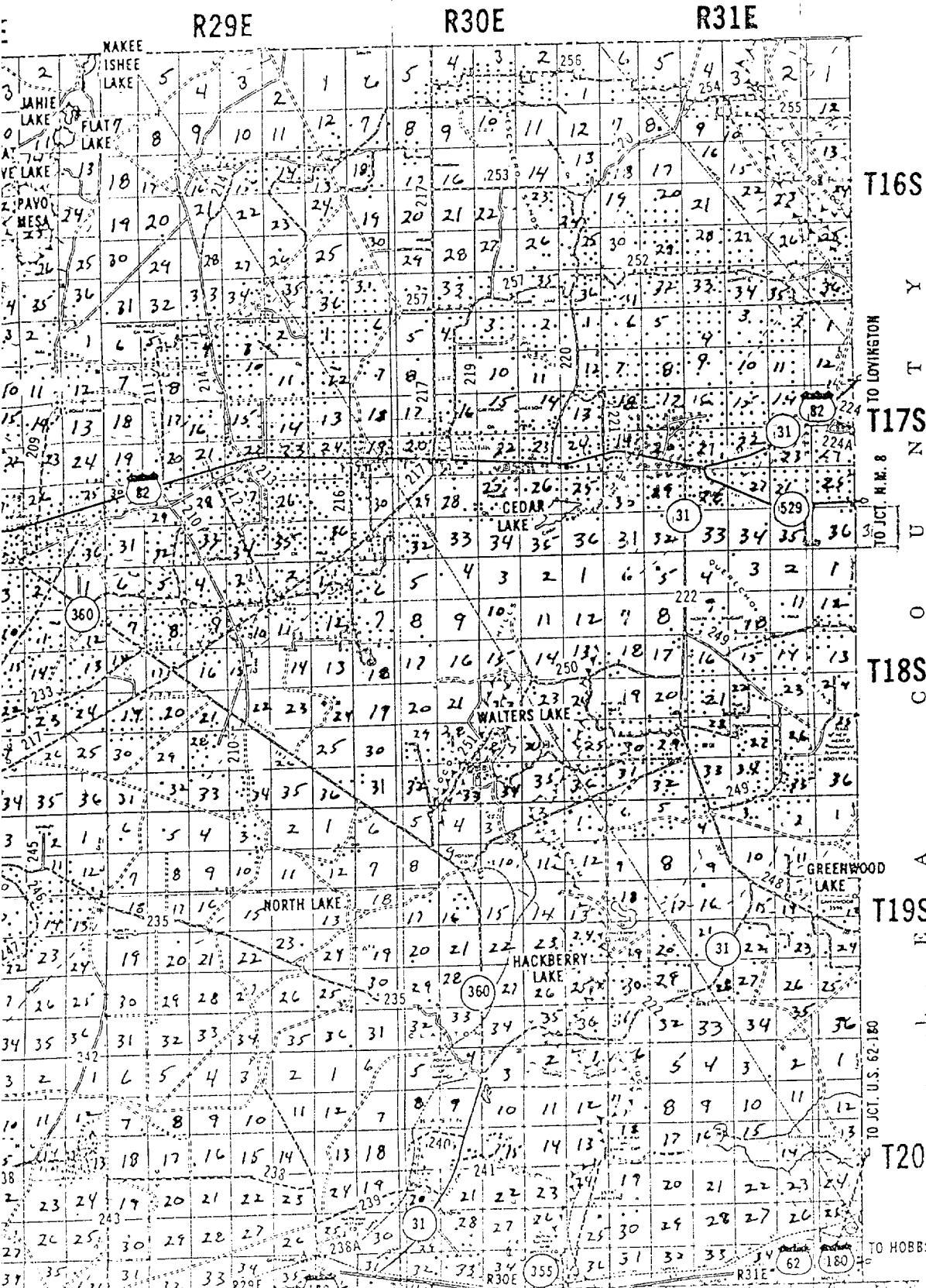
PIPE RECOVERY

24 HOUR SERVICE

746-2753

2 Miles South Of Artesia On The Carlsbad Hwy.
Rt. 1, Box 182
Artesia, N.M. 88210

U N T Y



T16S

T17S

T18S

T19S

T20S

Y

T

N

U

O

C

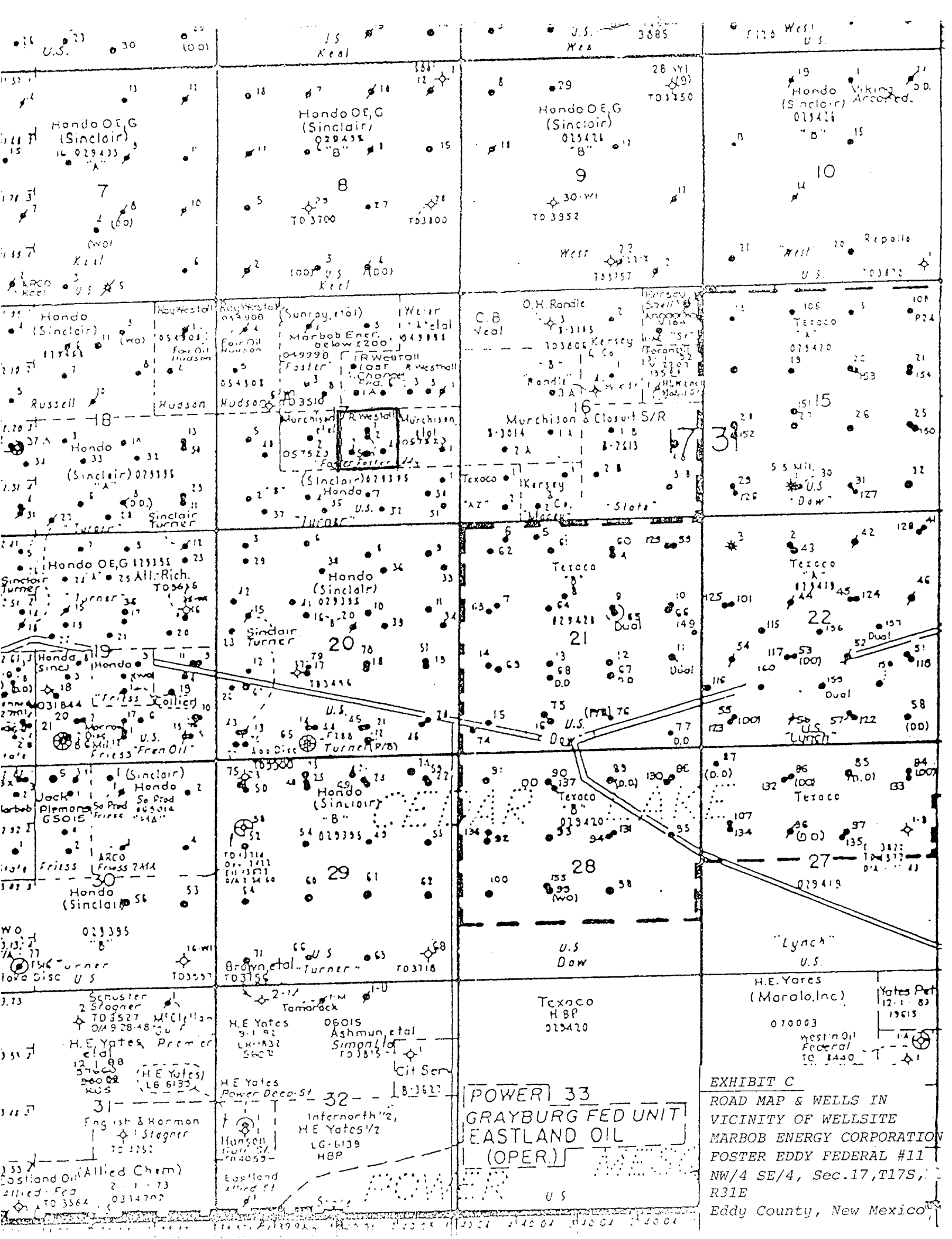
A

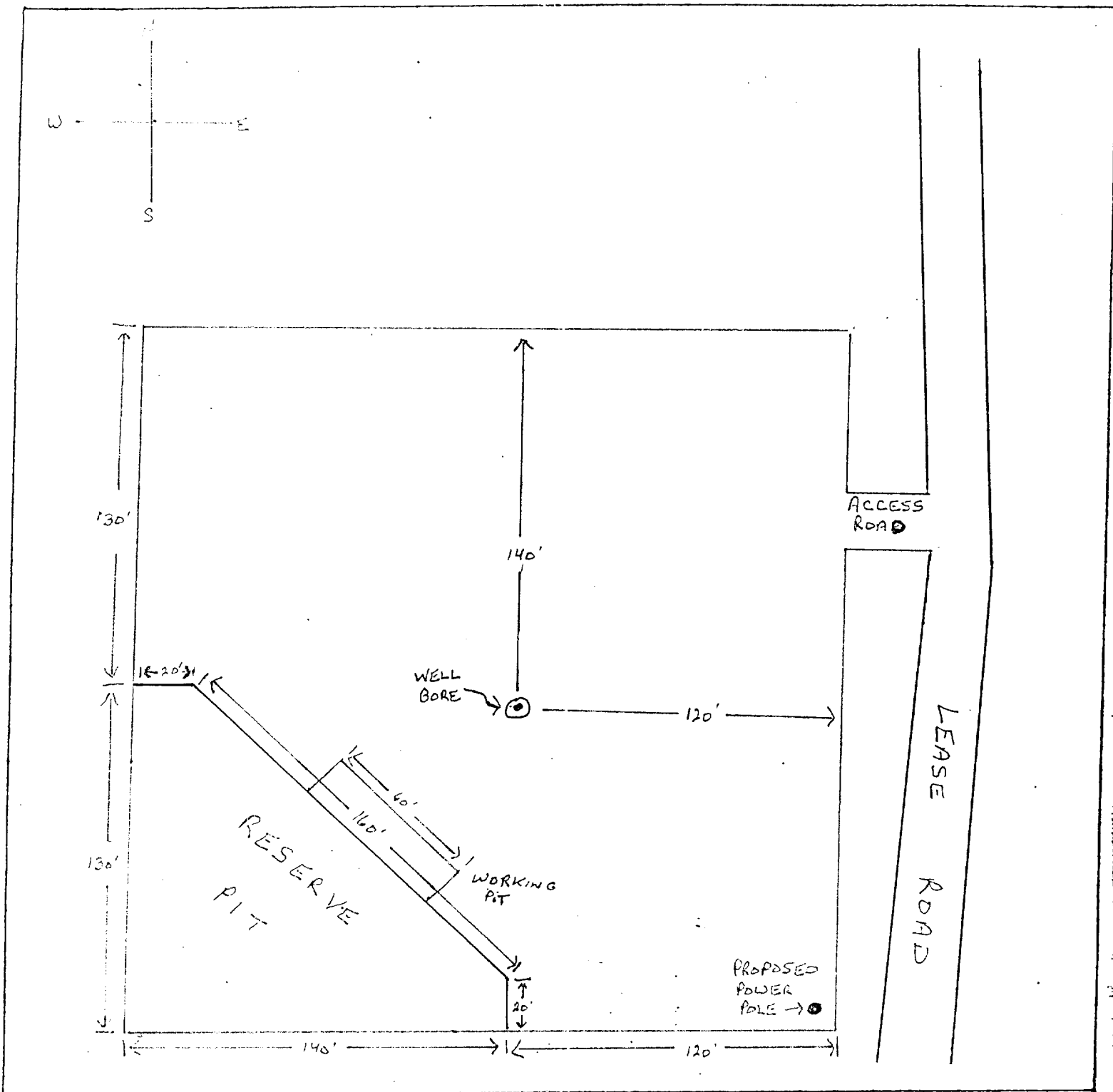
E

Exhibit B

Oil & Gas Map
Marbob Energy Corporation
Foster Eddy Fed. #11
NW/4 SE/4, Sec. 17
T-17S, R-31E
Eddy County, NM

TO LOVINGTON
TO JCT. N.M. 8
TO JCT. U.S. 62-180
TO HOBBS





LEGEND

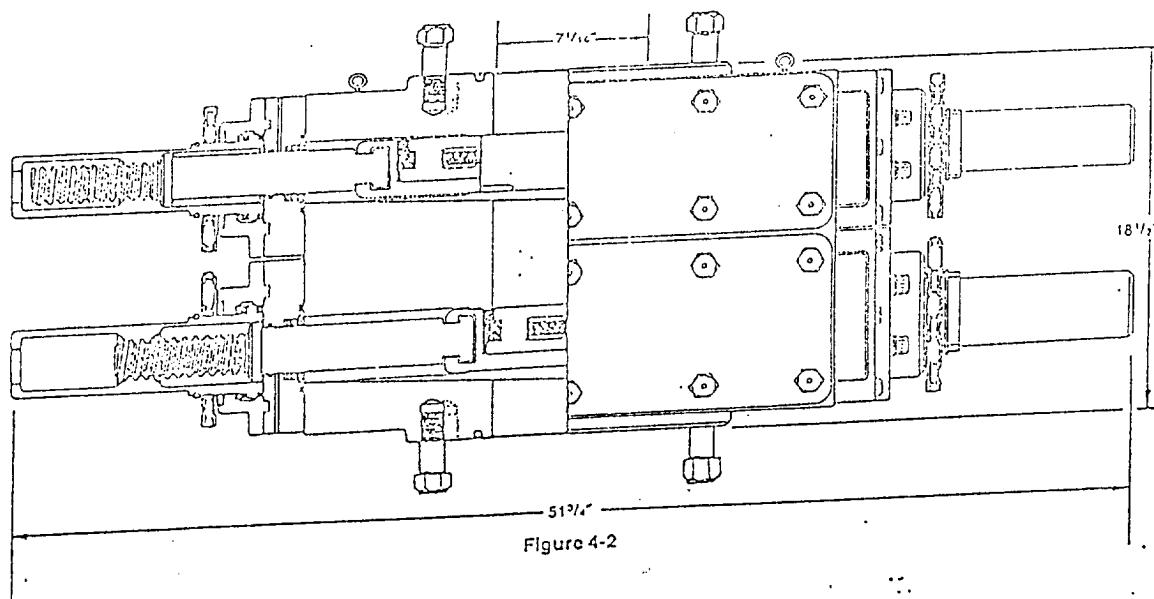
1 cm = 20 ft.

SUP Exhibit "D"

SKETCH OF PROPOSED WELL PAD
 MARBOB ENERGY CORPORATION
 FOSTER EDDY FEDERAL NO. 11
 NE 1/4 SEC. 14, T-17S, R-31E
 EDDY County, NEW MEXICO

JULY 1979

PAGE

 Rig
Equipment


DIMENSIONS AND WEIGHTS

		Manual
Weight	Single (pounds)	1,272
	Double (pounds)	2,335
Overall height, less studs	Single (inches)	10
	Double (inches)	18 1/2
Overall length (inches)		51 3/4
Overall width, less handwheel (inches)		20 1/4
Opening through preventer (inches)		7 1/16
Working pressure (psi)		3,000
Test pressure (psi)		6,000
Handwheel diameter (inches)		20
Ring joint gasket API number		R-45

SUP Exhibit "E"

Marbob Energy Corporation
 Foster Eddy Federal #11
 NW/4 SE/4, S8C-17, T-17S, R-31E
 Eddy County, New Mexico