

District I  
PO Box 1980, Hobbs, NM 88241-1980  
District II  
811 S. 1st Street Artesia, NM 88210-1404  
District III  
1000 Rio Brazos Rd, Aztec, NM 87410  
District IV  
PO Box 2088, Santa Fe, NM 87504-2088

State of New Mexico  
Energy, Minerals & Natural Resources Department  
OIL CONSERVATION DIVISION  
PO Box 2088  
Santa Fe, NM 87504-2088

Form C-101  
Revised February 10, 1994  
Instructions on back  
Submit to Appropriate District Office  
State Lease - 6 Copies  
Fee Lease - 5 Copies

DEC 16 '96

☐ AMENDED REPORT

APPLICATION FOR PERMIT TO DRILL, RE-ENTER, DEEPEN, PLUG BACK, OR ADD A ZONE

Operator Name and Address Mack Energy Corporation P.O. Box 960 Artesia, NM 88211-0960		OGRID Number 013837 API Number 30-015-29300
Property Code 006104	Property Name G J West Coop Unit	Well No. 143

Surface Location

UL or lot no.	Section	Township	Range	Lot Idn	Feet from the	North/South line	Feet from the	East/West line	County
G	28	17S	29E		2040	North	1940	East	Eddy

Proposed Bottom Hole Location If Different From Surface

UL or lot No.	Section	Township	Range	Lot Idn	Feet from the	North/South line	Feet from the	East/West line	County
Proposed Pool 1 Grayburg Jackson; 7RVS-QN-GB-SA (28509)					Proposed Pool 2				

Work Type Code N Multiple No	Well Type Code O Proposed Depth 4600'	Cable/Rotary R Formation San Andres	Lease Type Code S Contractor LaRue	Ground Level Elevation 3567 Spud Date 1/2/96
---------------------------------------	--	--	---	---

Proposed Casing and Cement Program

Hole Size	Casing Size	Casing weight/foot	Setting Depth	Sacks of Cement	Estimated TOC
17 1/2	13 3/8	54.5#	125'	Circ	
12 1/4	8 5/8	24#	800'	Circ	
7 7/8	5 1/2	17#	4600'	Sufficient to Circ	

Describe the proposed program. If this application is to DEEPEN or PLUG BACK give the data on the present productive zone and proposed new productive zone. Describe the blowout prevention program, if any. Use additional sheets if necessary.

Mack Energy Corporation proposes to drill to 125', run 13 3/8" casing and cement. Drill to 800', run 8 5/8" casing and cement. Drill to 4600' and test San Andres Zone, run 5 1/2" casing and cement. Put well on production.

Note: On Production string, a fluid caliber will be run, will figure cement, with 25% excess, attempt to circulate.

Posted FD-1  
N & API  
12-17-96

I hereby certify that the information given above is true and complete to the best of my knowledge and belief Signature <i>Crissa D. Carter</i>		OIL CONSERVATION DIVISION	
Printed name: Crissa D. Carter		Approval by: <i>Jim W. Brown</i>	
Title: Production Clerk		Title: <i>District Supervisor</i>	
Date: 12/16/96		Approval Date: 12-17-96	Expiration Date: 12-17-99
Phone: (505)748-1288		Conditions of Approval: Attached <input type="checkbox"/>	

DISTRICT I  
P.O. Box 1980, Hobbs, NM 88241-1980

State of New Mexico  
Energy, Minerals and Natural Resources Department

Form C-102  
Revised February 10, 1994  
Submit to Appropriate District Office  
State Lease - 4 Copies  
Fee Lease - 3 Copies

DISTRICT II  
P.O. Drawer DD, Artesia, NM 88211-0719

DISTRICT III  
1000 Rio Brazos Rd., Aztec, NM 87410

DISTRICT IV  
P.O. BOX 2088, SANTA FE, N.M. 87504-2088

OIL CONSERVATION DIVISION

P.O. Box 2088  
Santa Fe, New Mexico 87504-2088

☐ AMENDED REPORT

WELL LOCATION AND ACREAGE DEDICATION PLAT

API Number 30-015-29300	Pool Code 28509	Pool Name Grayburg Jackson; 7RVS-QN-GB-SA
Property Code 006104	Property Name G.J. WEST Coop Unit	Well Number 143
OGRID No. 013837	Operator Name MACK ENERGY CORPORATION	Elevation 3567

Surface Location

UL or lot No. G	Section 28	Township 17 S	Range 29 E	Lot Idn	Feet from the 2040	North/South line NORTH	Feet from the 1940	East/West line EAST	County EDDY
--------------------	---------------	------------------	---------------	---------	-----------------------	---------------------------	-----------------------	------------------------	----------------

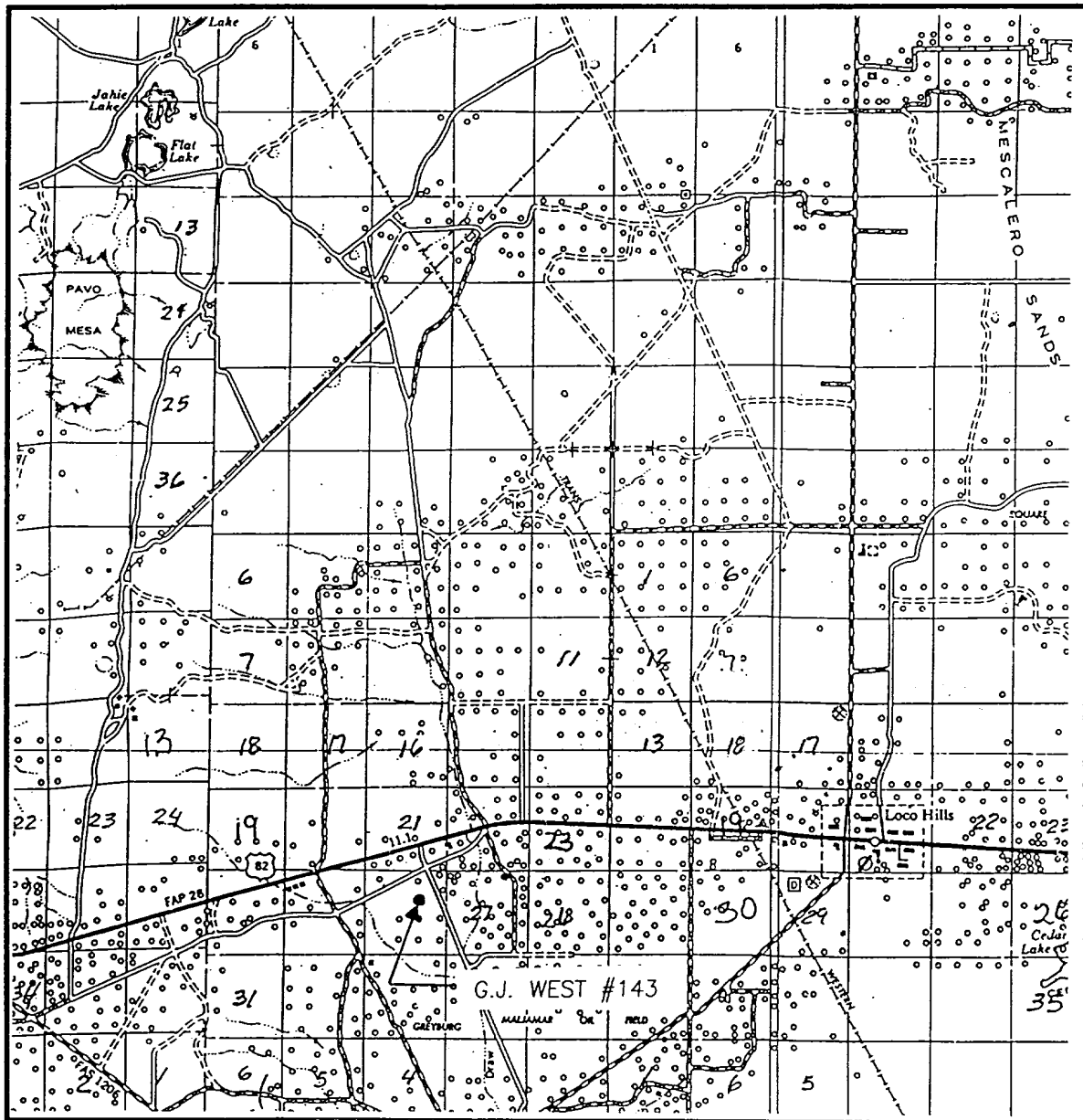
Bottom Hole Location If Different From Surface

UL or lot No.	Section	Township	Range	Lot Idn	Feet from the	North/South line	Feet from the	East/West line	County
Dedicated Acres 40	Joint or Infill	Consolidation Code	Order No.						

NO ALLOWABLE WILL BE ASSIGNED TO THIS COMPLETION UNTIL ALL INTERESTS HAVE BEEN CONSOLIDATED  
OR A NON-STANDARD UNIT HAS BEEN APPROVED BY THE DIVISION

	<b>OPERATOR CERTIFICATION</b> <i>I hereby certify the the information contained herein is true and complete to the best of my knowledge and belief.</i>  Crissa D. Carter Signature Crissa D. Carter Printed Name Production Clerk Title 12/16/96 Date
	<b>SURVEYOR CERTIFICATION</b> <i>I hereby certify that the well location shown on this plat was plotted from field notes of actual surveys made by me or under my supervision, and that the same is true and correct to the best of my belief.</i>  DEC. 10, 1996 Date Surveyed Signature & Seal of Professional Surveyor DMCC 96-11-1633 Certificate No. JOHN W. WEST 676 RONALD J. EIDSON 3239 GARY EIDSON 12641

# VICINITY MAP



SCALE: 1" = 2 MILES

SEC. 28 TWP. 17-S RGE. 29-E

SURVEY N.M.P.M.

COUNTY EDDY

DESCRIPTION 2040' FNL & 1940' FEL

ELEVATION 3567

OPERATOR MACK ENERGY CORPORATION

LEASE G.J. WEST

**JOHN WEST ENGINEERING  
HOBBS, NEW MEXICO**

**(505) 393-3117**

Topographic map of a section of the G.J. WEST #143 oil field. The map shows contour lines, spot elevations, and various features including oil wells, oil tanks, and windmills. A dashed line indicates the boundary of the oil field. The map is divided into sections 20, 21, 22, 27, 28, and 29. A north arrow is located in the upper right corner.

Key features and labels on the map include:

- Section Numbers:** 20, 21, 22, 27, 28, 29.
- Oil Wells:**
  - Oil Well (Inactive) 3596
  - Oil Well 3593
  - Oil Well 3594
  - Oil Well 3595
  - Oil Well 3596
  - Oil Well 3597
  - Oil Well 3598
  - Oil Well 3599
  - Oil Well 3600
  - Oil Well 3601
  - Oil Well 3602
  - Oil Well 3603
  - Oil Well 3604
  - Oil Well 3605
  - Oil Well 3606
  - Oil Well 3607
  - Oil Well 3608
  - Oil Well 3609
  - Oil Well 3610
  - Oil Well 3611
  - Oil Well 3612
  - Oil Well 3613
  - Oil Well 3614
  - Oil Well 3615
  - Oil Well 3616
  - Oil Well 3617
  - Oil Well 3618
  - Oil Well 3619
  - Oil Well 3620
  - Oil Well 3621
  - Oil Well 3622
  - Oil Well 3623
  - Oil Well 3624
  - Oil Well 3625
  - Oil Well 3626
  - Oil Well 3627
  - Oil Well 3628
  - Oil Well 3629
  - Oil Well 3630
  - Oil Well 3631
  - Oil Well 3632
  - Oil Well 3633
  - Oil Well 3634
  - Oil Well 3635
  - Oil Well 3636
  - Oil Well 3637
  - Oil Well 3638
  - Oil Well 3639
  - Oil Well 3640
  - Oil Well 3641
  - Oil Well 3642
  - Oil Well 3643
  - Oil Well 3644
  - Oil Well 3645
  - Oil Well 3646
  - Oil Well 3647
  - Oil Well 3648
  - Oil Well 3649
  - Oil Well 3650
  - Oil Well 3651
  - Oil Well 3652
  - Oil Well 3653
  - Oil Well 3654
  - Oil Well 3655
  - Oil Well 3656
  - Oil Well 3657
  - Oil Well 3658
  - Oil Well 3659
  - Oil Well 3660
  - Oil Well 3661
  - Oil Well 3662
  - Oil Well 3663
  - Oil Well 3664
  - Oil Well 3665
  - Oil Well 3666
  - Oil Well 3667
  - Oil Well 3668
  - Oil Well 3669
  - Oil Well 3670
  - Oil Well 3671
  - Oil Well 3672
  - Oil Well 3673
  - Oil Well 3674
  - Oil Well 3675
  - Oil Well 3676
  - Oil Well 3677
  - Oil Well 3678
  - Oil Well 3679
  - Oil Well 3680
  - Oil Well 3681
  - Oil Well 3682
  - Oil Well 3683
  - Oil Well 3684
  - Oil Well 3685
  - Oil Well 3686
  - Oil Well 3687
  - Oil Well 3688
  - Oil Well 3689
  - Oil Well 3690
  - Oil Well 3691
  - Oil Well 3692
  - Oil Well 3693
  - Oil Well 3694
  - Oil Well 3695
  - Oil Well 3696
  - Oil Well 3697
  - Oil Well 3698
  - Oil Well 3699
  - Oil Well 3700
- Oil Tanks:**
  - Oil Tank 3551
  - Oil Tank 3552
  - Oil Tank 3553
  - Oil Tank 3554
  - Oil Tank 3555
  - Oil Tank 3556
  - Oil Tank 3557
  - Oil Tank 3558
  - Oil Tank 3559
  - Oil Tank 3560
  - Oil Tank 3561
  - Oil Tank 3562
  - Oil Tank 3563
  - Oil Tank 3564
  - Oil Tank 3565
  - Oil Tank 3566
  - Oil Tank 3567
  - Oil Tank 3568
  - Oil Tank 3569
  - Oil Tank 3570
  - Oil Tank 3571
  - Oil Tank 3572
  - Oil Tank 3573
  - Oil Tank 3574
  - Oil Tank 3575
  - Oil Tank 3576
  - Oil Tank 3577
  - Oil Tank 3578
  - Oil Tank 3579
  - Oil Tank 3580
  - Oil Tank 3581
  - Oil Tank 3582
  - Oil Tank 3583
  - Oil Tank 3584
  - Oil Tank 3585
  - Oil Tank 3586
  - Oil Tank 3587
  - Oil Tank 3588
  - Oil Tank 3589
  - Oil Tank 3590
  - Oil Tank 3591
  - Oil Tank 3592
  - Oil Tank 3593
  - Oil Tank 3594
  - Oil Tank 3595
  - Oil Tank 3596
  - Oil Tank 3597
  - Oil Tank 3598
  - Oil Tank 3599
  - Oil Tank 3600
  - Oil Tank 3601
  - Oil Tank 3602
  - Oil Tank 3603
  - Oil Tank 3604
  - Oil Tank 3605
  - Oil Tank 3606
  - Oil Tank 3607
  - Oil Tank 3608
  - Oil Tank 3609
  - Oil Tank 3610
  - Oil Tank 3611
  - Oil Tank 3612
  - Oil Tank 3613
  - Oil Tank 3614
  - Oil Tank 3615
  - Oil Tank 3616
  - Oil Tank 3617
  - Oil Tank 3618
  - Oil Tank 3619
  - Oil Tank 3620
  - Oil Tank 3621
  - Oil Tank 3622
  - Oil Tank 3623
  - Oil Tank 3624
  - Oil Tank 3625
  - Oil Tank 3626
  - Oil Tank 3627
  - Oil Tank 3628
  - Oil Tank 3629
  - Oil Tank 3630
  - Oil Tank 3631
  - Oil Tank 3632
  - Oil Tank 3633
  - Oil Tank 3634
  - Oil Tank 3635
  - Oil Tank 3636
  - Oil Tank 3637
  - Oil Tank 3638
  - Oil Tank 3639
  - Oil Tank 3640
  - Oil Tank 3641
  - Oil Tank 3642
  - Oil Tank 3643
  - Oil Tank 3644
  - Oil Tank 3645
  - Oil Tank 3646
  - Oil Tank 3647
  - Oil Tank 3648
  - Oil Tank 3649
  - Oil Tank 3650
  - Oil Tank 3651
  - Oil Tank 3652
  - Oil Tank 3653
  - Oil Tank 3654
  - Oil Tank 3655
  - Oil Tank 3656
  - Oil Tank 3657
  - Oil Tank 3658
  - Oil Tank 3659
  - Oil Tank 3660
  - Oil Tank 3661
  - Oil Tank 3662
  - Oil Tank 3663
  - Oil Tank 3664
  - Oil Tank 3665
  - Oil Tank 3666
  - Oil Tank 3667
  - Oil Tank 3668
  - Oil Tank 3669
  - Oil Tank 3670
  - Oil Tank 3671
  - Oil Tank 3672
  - Oil Tank 3673
  - Oil Tank 3674
  - Oil Tank 3675
  - Oil Tank 3676
  - Oil Tank 3677
  - Oil Tank 3678
  - Oil Tank 3679
  - Oil Tank 3680
  - Oil Tank 3681
  - Oil Tank 3682
  - Oil Tank 3683
  - Oil Tank 3684
  - Oil Tank 3685
  - Oil Tank 3686
  - Oil Tank 3687
  - Oil Tank 3688
  - Oil Tank 3689
  - Oil Tank 3690
  - Oil Tank 3691
  - Oil Tank 3692
  - Oil Tank 3693
  - Oil Tank 3694
  - Oil Tank 3695
  - Oil Tank 3696
  - Oil Tank 3697
  - Oil Tank 3698
  - Oil Tank 3699
  - Oil Tank 3700
- Windmills:**
  - Windmill 3551
  - Windmill 3552
  - Windmill 3553
  - Windmill 3554
  - Windmill 3555
  - Windmill 3556
  - Windmill 3557
  - Windmill 3558
  - Windmill 3559
  - Windmill 3560
  - Windmill 3561
  - Windmill 3562
  - Windmill 3563
  - Windmill 3564
  - Windmill 3565
  - Windmill 3566
  - Windmill 3567
  - Windmill 3568
  - Windmill 3569
  - Windmill 3570
  - Windmill 3571
  - Windmill 3572
  - Windmill 3573
  - Windmill 3574
  - Windmill 3575
  - Windmill 3576
  - Windmill 3577
  - Windmill 3578
  - Windmill 3579
  - Windmill 3580
  - Windmill 3581
  - Windmill 3582</

CONTOUR INTERVAL:  
RED LAKE SE - 10'

RED LAKE SE, N.M.

**JOHN WEST ENGINEERING  
HOBBS, NEW MEXICO  
(505) 393-3117**

30-017-29306

Log - 13837  
Prop - 6104  
Pool - 28509

**Oxford<sup>®</sup>**

ESSELTE

MADE IN U.S.A.

NO. R753 143

•

•

•

•

5-12-97  
Dual Rad.  
774' - 4600'  
Dual Spaced  
Neutron Spectral  
Density  
2000' - 4600'

el Tops pen/BGA

San Andres 2455

Glorieta 3968