

UNITED STATES N. M. O.
DEPARTMENT OF THE INTERIOR
BUREAU OF LAND MANAGEMENT

APPLICATION FOR PERMIT TO DRILL, DEEPEN, OR PLUG BACK

1a. TYPE OF WORK

DRILL ☒

DEEPEN ☐

PLUG BACK ☐

b. TYPE OF WELL

OIL
WELL ☒

GAS
WELL ☐

OTHER

SINGLE
ZONE ☐

MULTIPLE
ZONE ☐

2. NAME OF OPERATOR

Marbob Energy Corporation

14049

3a. Area Code & Phone No.

505-748-3303

3. ADDRESS OF OPERATOR

P. O. Drawer 217, Artesia, NM 88210

4. LOCATION OF WELL (Report location clearly and in accordance with any State requirements.)

2615 FNL 495 FWL

At proposed prod. zone SAME

LINE / APPROVAL
DISTRICT

14. DISTANCE IN MILES AND DIRECTION FROM NEAREST TOWN OR POST OFFICE*

EAST OF ARTESIA ON HWY 82 APPROX. 20.7 MILES

10. DISTANCE FROM PROPOSED*

LOCATION TO NEAREST
PROPERTY OR LEASE LINE, FT.
(Also to nearest drig. unit line, if any)

495'

16. NO. OF ACRES IN LEASE

1440

17. NO. OF ACRES ASSIGNED
TO THIS WELL

40

18. DISTANCE FROM PROPOSED LOCATION*
TO NEAREST WELL, DRILLING, COMPLETED,
OR APPLIED FOR, ON THIS LEASE, FT.

19. PROPOSED DEPTH

4800'

20. ROTARY OR CABLE TOOLS

ROTARY

21. ELEVATIONS (Show whether DF, RT, GR, etc.)

3575' GR

22. APPROX. DATE WORK WILL START*

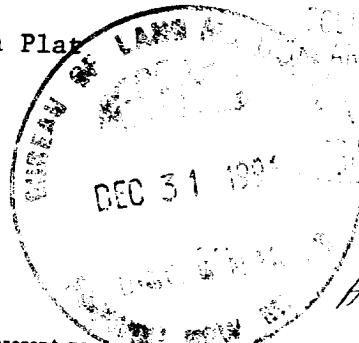
FEBRUARY 1, 1997

PROPOSED CASING AND CEMENTING PROGRAM

| HOLE SIZE | CASING SIZE | WEIGHT/FOOT | GRADE | THREAD TYPE | SETTING DEPTH | QUANTITY OF CEMENT |
|-----------|-------------|-------------|-------|-------------|---------------|--------------------|
| 12 1/4" | 8 5/8" | 24# | J-55 | LT&C | 350' | 300 SKITTLES |
| 7 7/8" | 5 1/2" | 17# | J-55 | LT&C | 4800' | 1100 SK |

Pay zone will be selectively perforated and stimulated as needed
for optimum production.

Attached are: 1. Location & acreage Dedication Plat
2. Supplemental Drilling Data
3. Surface Use Plan



IN ABOVE SPACE DESCRIBE PROPOSED PROGRAM: If proposal is to deepen or plug back, give data on present productive zone and proposed new productive zone. If proposal is to drill or deepen directionally, give pertinent data on subsurface locations and measured and true vertical depths. Give blowout preventer program, if any.

SIGNATURE Rhonda Nelson TITLE Production Clerk

(This space for Federal or State office use)

PERMIT NO.

APPROVED BY (ORIG. SGD.) ARMANDO A. LOPEZ

Acting Assistant Field Office Manager,
Lands and Minerals

CONDITIONS OF APPROVAL, IF ANY:

TITLE

DATE SEP 01 1998

DISTRICT I

P.O. Box 1980, Hobbs, NM 88241-1980

DISTRICT II

P.O. Drawer DD, Artesia, NM 88211-0719

DISTRICT III

1000 Rio Brazos Rd., Aztec, NM 87410

DISTRICT IV

P.O. Box 2088, Santa Fe, NM 87504-2088

State of New Mexico

Energy, Minerals and Natural Resources Department

Form C-102

Revised February 10, 1994

Submit to Appropriate District Office

State Lease - 4 Copies

Fee Lease - 3 Copies

OIL CONSERVATION DIVISION

P.O. Box 2088

Santa Fe, New Mexico 87504-2088

☐ AMENDED REPORT

WELL LOCATION AND ACREAGE DEDICATION PLAT

| | | | | | |
|---------------|---------------------------|-----------|--|---------------------------|-------------|
| API Number | | Pool Code | | Pool Name | |
| | | 28509 | | GRBG JACKSON SR Q GRBG SA | |
| Property Code | Property Name | | | | Well Number |
| 6497 | BURCH KEELY UNIT | | | | 838 |
| OGRID No. | Operator Name | | | | Elevation |
| 14049 | MARBOB ENERGY CORPORATION | | | | 3575 |

Surface Location

| | | | | | | | | | |
|---------------|---------|----------|-------|---------|---------------|------------------|---------------|----------------|--------|
| UL or lot No. | Section | Township | Range | Lot Idn | Feet from the | North/South line | Feet from the | East/West line | County |
| E | 26 | 17 S | 29 E | | 2615 | NORTH | 495 | WEST | EDDY |

Bottom Hole Location If Different From Surface

| | | | | | | | | | |
|-----------------|---------|-----------------|-------|--------------------|---------------|------------------|---------------|----------------|--------|
| UL or lot No. | Section | Township | Range | Lot Idn | Feet from the | North/South line | Feet from the | East/West line | County |
| | | | | | | | | | |
| Dedicated Acres | | Joint or Infill | | Consolidation Code | | Order No. | | | |
| | | | | | | | | | |

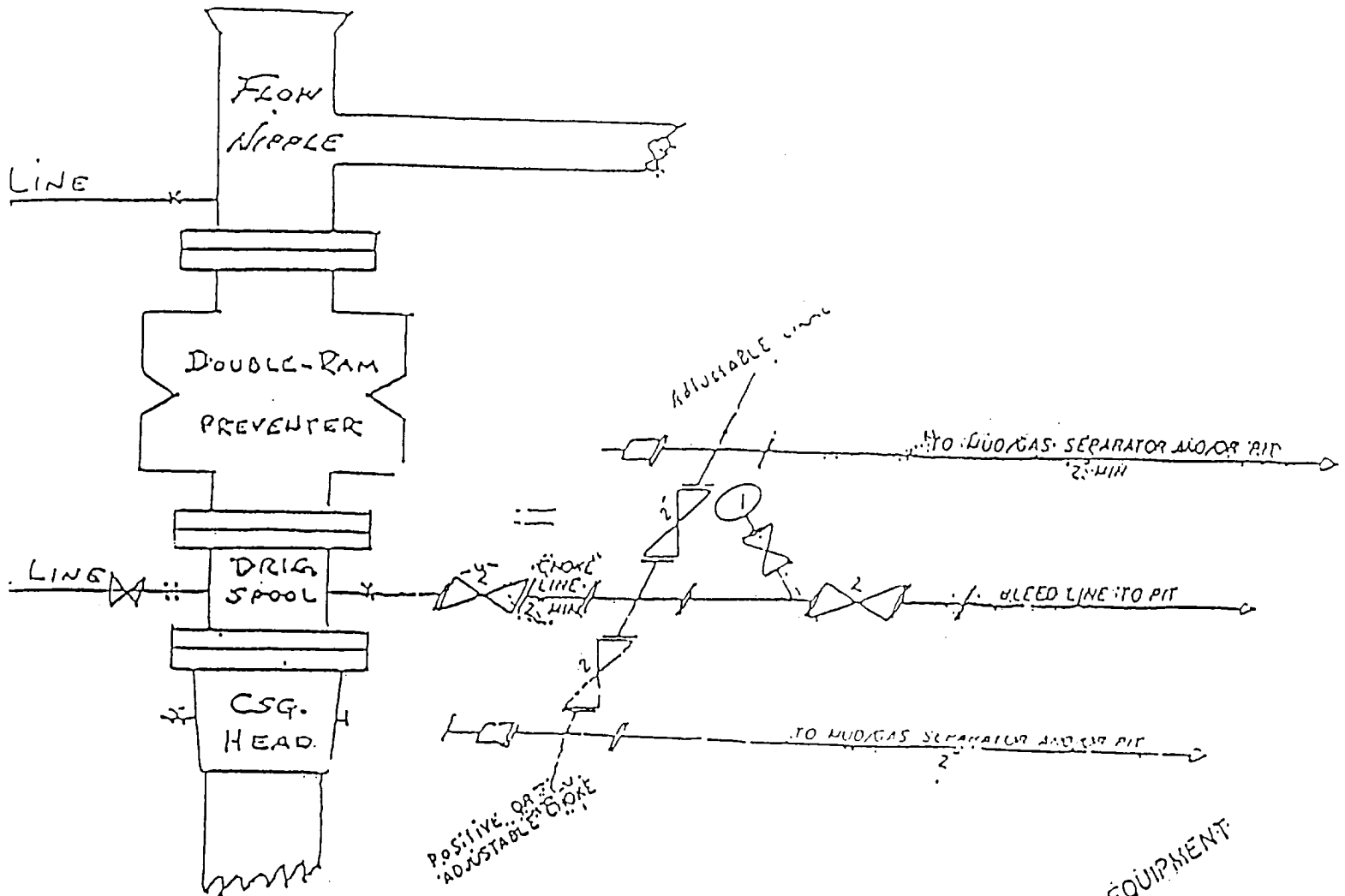
NO ALLOWABLE WILL BE ASSIGNED TO THIS COMPLETION UNTIL ALL INTERESTS HAVE BEEN CONSOLIDATED
OR A NON-STANDARD UNIT HAS BEEN APPROVED BY THE DIVISION

| | | |
|--|---|--|
| | OPERATOR CERTIFICATION I hereby certify the the information contained herein is true and complete to the best of my knowledge and belief. Signature RHONDA NELSON Printed Name PRODUCTION CLERK Title Date | |
| | SURVEYOR CERTIFICATION I hereby certify that the well location shown on this plat was plotted from field notes of actual surveys made by me or under my supervision, and that the same is true and correct to the best of my belief. OCTOBER 29, 1996 Date Surveyed Signature & Seal Professional Surveyor SWO. Num. 96-141383 Certificate No. JOHN W. WEST, 676 RONALD J. EIDSON, 3239 GARY G. EIDSON, 12641 | |

EXHIBIT #1

B U P & CHOKE MANIFOLD

10"/900 Cameron SS Space Saver
3000# Working Pressure
3.000# Working Pressure Choke Manifold



Marbob Energy Corporation

Burch Keely Unit No. 838
2615' FNL and 495' FWL
Section 26-17S-29E
Eddy County, New Mexico
Exhibit #1

2 1/4\"/>

Attachment to Exhibit #1
NOTES REGARDING THE BLOWOUT PREVENTERS

1. Drilling nipple to be so constructed that it can be removed without use of a welder through rotary table opening, with minimum I.D. equal to preventer bore.
2. Wear ring to be properly installed in head.
3. Blow out preventer and all fittings must be in good condition, 3000 psi W.P. minimum.
4. All fittings to be flanged.
5. Safety valve must be available on rig floor at all times with proper connections, valve to be full bore 3000 psi W.P. minimum.
6. All choke and fill lines to be securely anchored, especially ends of choke lines.
7. Equipment through which bit must pass shall be at least as large as the diameter of the casing being drilled through.
8. Kelly cock on kelly.
9. Extension wrenches and hand wheels to be properly installed.
10. Blow out preventer control to be located as close to driller's position as feasible.
11. Blow out preventer closing equipment to include minimum 40 gallon accumulator, two independent sources of pump power on each closing unit installation, and meet all API specifications.