

UNITED STATES
DEPARTMENT OF THE INTERIOR
BUREAU OF LAND MANAGEMENT

OFFICE FOR NUMBER
OF COPIES REQUIRED
(Other instructions on
reverse side)
N. M. Oil Cons. Division
811 S. 1ST ST.
ARTESIA, NM 88210-283

30-015-30426
NM Roswell District
Modified Form No.
MD60-3160-2

APPLICATION FOR PERMIT TO DRILL, DEEPEN, OR PLUG BACK

1a. TYPE OF WORK

DRILL ☒

DEEPEN ☐

PLUG BACK ☐

b. TYPE OF WELL

OIL
WELL ☒

GAS
WELL ☐

OTHER ☐

SINGLE
ZONE ☐

MULTIPLE
ZONE ☐

2. NAME OF OPERATOR

Marbob Energy Corporation

14049

3a. Area Code & Phone No.

505-748-3303

3. ADDRESS OF OPERATOR

P. O. BOX 227 Artesia, NM 88210

4. LOCATION OF WELL (Report location clearly and in accordance with any State requirements.)

At surface

2310 FSL 1650 FEL
At proposed prod. zone

SAME

14. DISTANCE IN MILES AND DIRECTION FROM NEAREST TOWN OR POST OFFICE*

EAST OF ARTESIA ON HWY 82 APPROX 30.1 MILES

10. DISTANCE FROM PROPOSED*

LOCATION TO NEAREST
PROPERTY OR LEASE LINE, FT.
(Also to nearest drlg. unit line, if any)

1650'

16. NO. OF ACRES IN LEASE

1800

17. NO. OF ACRES ASSIGNED
TO THIS WELL

40

18. DISTANCE FROM PROPOSED LOCATION*
TO NEAREST WELL, DRILLING, COMPLETED,
OR APPLIED FOR, ON THIS LEASE, FT.

19. PROPOSED DEPTH

6000'

20. ROTARY OR CABLE TOOLS

ROTARY

21. ELEVATIONS (Show whether DF, RT, GR, etc.)

3698' GR

22. APPROX. DATE WORK WILL START*

SEPTEMBER 15, 1998

PROPOSED CASING AND CEMENTING PROGRAM

HOLE SIZE	CASING SIZE	WEIGHT/FOOT	GRADE	THREAD TYPE	SETTING DEPTH	QUANTITY OF CEMENT
12 1/4"	8 5/8"	24#	J-55	LTC	280'	300 SX, CIRC
7 7/8"	5 1/2"	17#	J-55	LTC	6000'	SUFFICIENT TO COVER 200' ABOVE ALL OIL & GAS HORIZONS

Post ID-1

10-9-98

API & Loc

PAY ZONE WILL BE SELECTIVELY PERFORATED AND STIMULATED AS
NEEDED FOR OPTIMUM PRODUCTION.

ATTACHED ARE:

1. ACREAGE LOCATION & DEDICATION PLAT
2. SUPPLEMENTAL DRILLING DATA
3. SURFACE USE PLAN

APPROVAL SUBJECT TO
GENERAL REQUIREMENTS AND
SPECIAL STIPULATIONS
ATTACHED

IN ABOVE SPACE DESCRIBE PROPOSED PROGRAM: If proposal is to deepen or plug back, give data on present productive zone and proposed new productive zone. If proposal is to drill or deepen directionally, give pertinent data on subsurface locations and measured and true vertical depths. Give blowout preventer program, if any.

SIGNED Robin Cockrum

TITLE Production Clerk

DATE 8/4/98

(This space for Federal or State office use)

PERMIT NO.

APPROVED BY

CONDITIONS OF APPROVAL, IF ANY:

Acting

APPROVAL DATE
Assistant Field Office Manager,
Lands and Minerals

TITLE

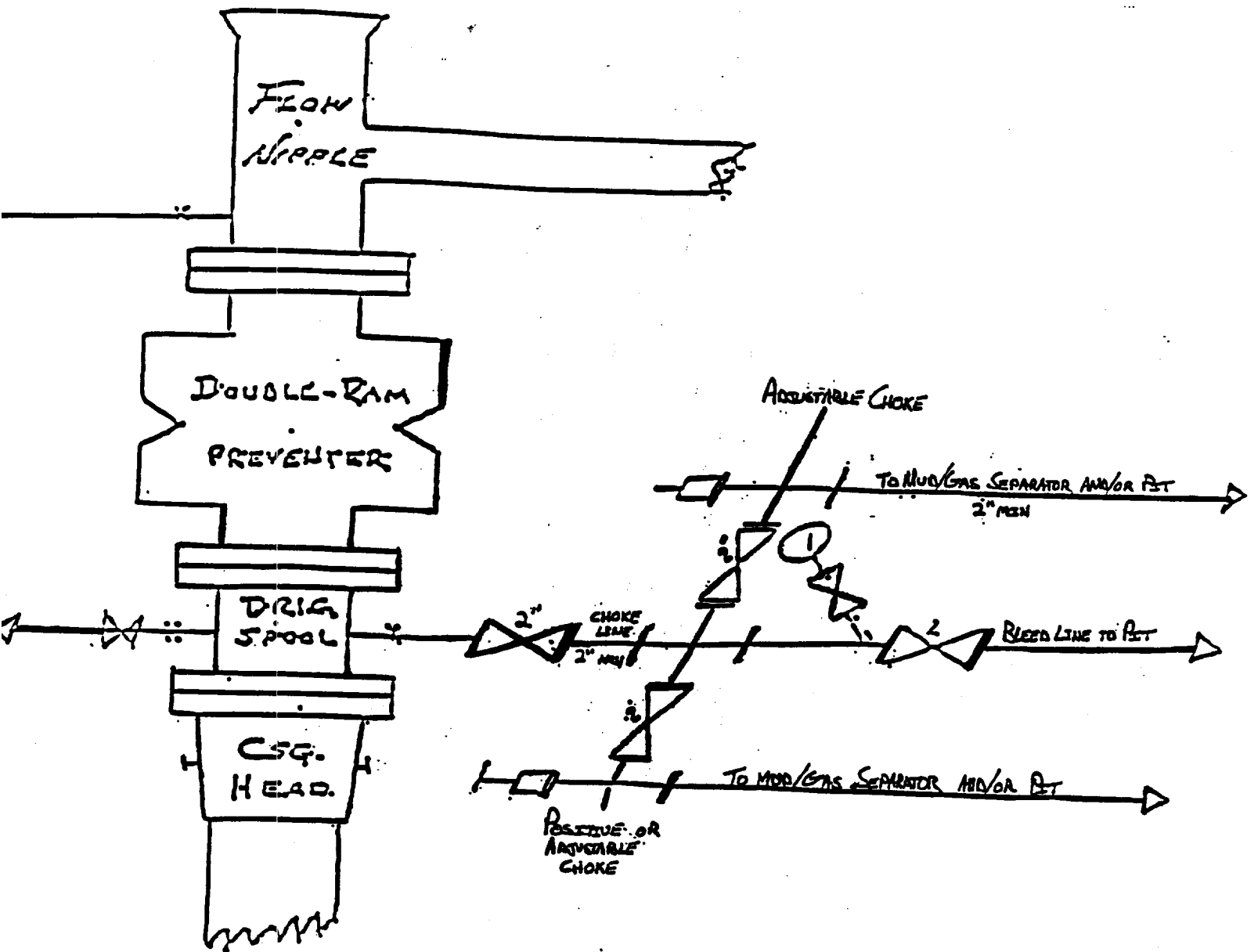
DATE 1998

*See Instructions On Reverse Side

Form C-102
Revised February 10, 1994
Submit to Appropriate District Office
State Lease - 4 Copies
Fee Lease - 3 Copies

		<p>OPERATOR CERTIFICATION</p> <p>I hereby certify the the information contained herein is true and complete to the best of my knowledge and belief.</p> <p><i>Robin Cockrum</i> Signature ROBIN COCKRUM</p> <p>Printed Name PRODUCTION ANALYST</p> <p>Title 8/4/98 Date</p>
		<p>SURVEYOR CERTIFICATION</p> <p>I hereby certify that the well location shown on this plat was plotted from field notes of actual surveys made by me or under my supervision, and that the same is true and correct to the best of my belief.</p> <p>JULY 13, 1998</p> <p>Date Surveyed Signature of Seal of Professional Surveyor Professional Surveyor</p> <p>DMCC</p> <p>RONALD S. EDSON NEW MEXICO 3239 7-20-98 98-11-1018</p> <p>Certification No. RONALD S. EDSON 3239 CARY W. EDSON 12641 EDSON, McDONALD 12185</p>

BLOW OUT PREVENTER AND CHOKE MANIFOLD



Lee Federal # 11
2310' FSL & 1650' FEL
Section 20; T17e -- R31e
Eddy County, New Mexico

Exhibit # 1

10"/900 Cameron SS Space Saver
3000# Working Pressure
3000# Working Pressure Choke Manifold

Attachment to Exhibit #1
NOTES REGARDING THE BLOWOUT PREVENTERS

1. Drilling nipple to be so constructed that it can be removed without use of a welder through rotary table opening, with minimum I.D. equal to preventer bore.
2. Wear ring to be properly installed in head.
3. Blow out preventer and all fittings must be in good condition, 1000 psi W.P. minimum.
4. All fittings to be flanged.
5. Safety valve must be available on rig floor at all times with proper connections, valve to be full bore 1000 psi W.P. minimum.
6. All choke and fill lines to be securely anchored, especially ends of choke lines.
7. Equipment through which bit must pass shall be at least as large as the diameter of the casing being drilled through.
8. Kelly cock on kelly.
9. Extension wrenches and hand wheels to be properly installed.
10. Blow out preventer control to be located as close to driller's position as feasible.
11. Blow out preventer closing equipment to include minimum 40 gallon accumulator, two independent sources of pump power on each closing unit installation, and meet all API specifications.