

District I
PO Box 1980, Hobbs, NM 88241-1980

District II
811 South First, Artesia, NM 88210

District III
1000 Rio Brazos Rd., Aztec, NM 87410

District IV
2040 South Pacheco, Santa Fe, NM 87505

State of New Mexico
Energy, Minerals & Natural Resources Department

OIL CONSERVATION DIVISION
2040 South Pacheco
Santa Fe, NM 87505

Form C-101
Revised October 18, 1994
Instructions on back
Submit to Appropriate District Office
State Lease - 6 Copies
Fee Lease - 5 Copies

☒ AMENDED REPORT

APPLICATION FOR PERMIT TO DRILL, RE-ENTER, DEEPEN, PLUG BACK, OR ADD A ZONE

Operator Name and Address MARBOB ENERGY CORPORATION P.O. BOX 227 ARTESIA, NM 88210		OGRID Number 14049
		API Number 30-015-30724
Property Code 24828	Property Name MUSKEGON SOUTH STATE	Well No. 1

Surface Location

UL or lot no.	Section	Township	Range	Lot Idn	Feet from the	North/South line	Feet from the	East/West Line	County
I	20	17S	29E	NESE	1650	SOUTH	330	EAST	EDDY

Proposed Bottom Hole Location If Different From Surface

UL or lot no.	Section	Township	Range	Lot Idn	Feet from the	North/South line	Feet from the	East/West Line	County
Proposed Pool 1 EAST EMPIRE YESO					Proposed Pool 2				
96610									

Work Type Code N	Well Type Code O	Cable/Rotary R	Lease Type Code S	Ground Level Elevation 3597
Multiple No	Proposed Depth 4200	Formation	Contractor L&M	Spud Date 08-18-99

Proposed Casing and Cement Program

Hole Size	Casing Size	Casing weight/foot	Setting Depth	Sacks of Cement	Estimated TOC
12 1/4"	7 7/8"	24#	350'	300	CIRC
7 7/8"	5 1/2"	17#	4200'	SUFFICIENT TO COVER	Post ID-1
				200' ABOVE ALL KNOWN	8-28-99
				O&G HORIZONS	HPI & Loc

Describe the proposed program. If this application is to DEEPEN or PLUG BACK give the data on the present productive zone and proposed new productive zone. Describe the blowout prevention program, if any. Use additional sheets if necessary.

DRILL 12 1/4" HOLE TO 350', SET 8 5/8" CSG & CIRC CMT, NU 3000# BOPE - DRILL 7 7/8" HOLE TO TD @ APPX 4200', SET 5 1/2" CSG TO TD & CMT W/SUFFICIENT CMT TO COVER PRODUCTION ZONE PLUS A MINIMUM OF 200' OF CMT ABOVE PRODUCTION ZONE

SEE EXHIBIT ATTACHED

I hereby certify that the information given above is true and complete to the best of my knowledge and belief.

Signature: *Robin Cockrum*
Printed name: ROBIN COCKRUM

Title: PRODUCTION ANALYST

Date: 08-16-99 Phone: 748-3303

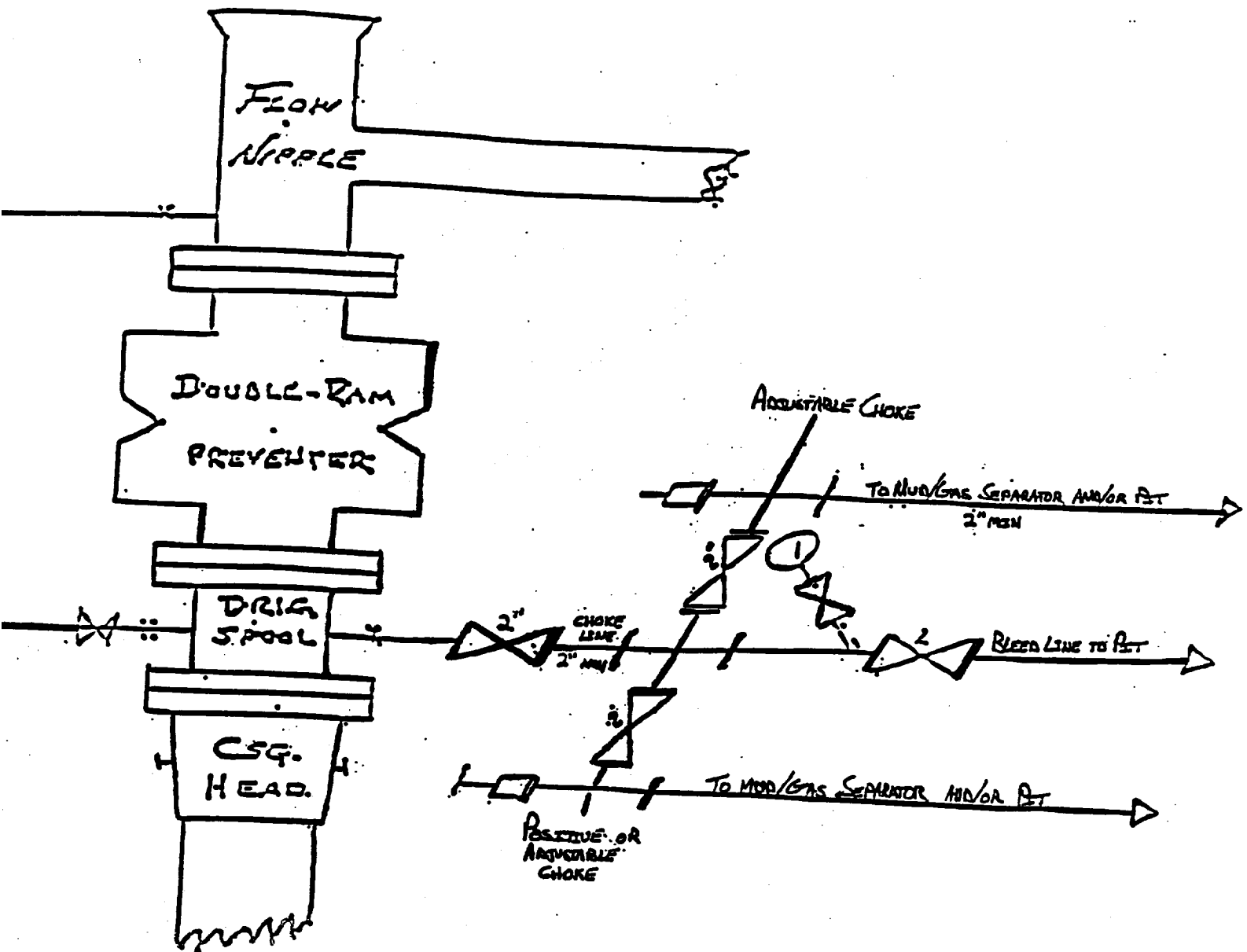
OIL CONSERVATION DIVISION

Approved By: ORIGINAL SIGNED BY TIM W. GUM
DISTRICT H SUPERVISOR

Title:
Approval Date: 8-18-99 Expiration Date: 8-18-00

Conditions of Approval:
Attached: ☐

BLOW OUT PREVENTER AND CHOKE MANIFOLD



Marbob Energy Corporation
Muskegon South State No. 1
1650' FSL & 330' FEL
Section 20; T17s - R29e
Eddy County, New Mexico

*10"/900 Cameron SS Space Saver
3000# Working Pressure
3000# Working Pressure Choke Manifold*

DISTRICT I
P.O. Box 1980, Hobbs, NM 88241-1980

DISTRICT II
P.O. Drawer DD, Artesia, NM 88211-0719

DISTRICT III
1000 Rio Brazos Rd., Artesia, NM 87410

DISTRICT IV
P.O. Box 2088, Santa Fe, NM 87504-2088

State of New Mexico
Energy, Minerals and Natural Resources Department

Form C-102
Revised February 10, 1994
Submit to Appropriate District Office
State Lease - 4 Copies
Fee Lease - 3 Copies

OIL CONSERVATION DIVISION

P.O. Box 2088
Santa Fe, New Mexico 87504-2088

☐ AMENDED REPORT

WELL LOCATION AND ACREAGE DEDICATION PLAT

API Number	Pool Code	Pool Name
		EAST EMPIRE YESO
Property Code	Property Name	Well Number
	MUSKEGON SOUTH STATE	1
OGRID No.	Operator Name	Elevation
14049	MARBOB ENERGY CORPORATION	3597

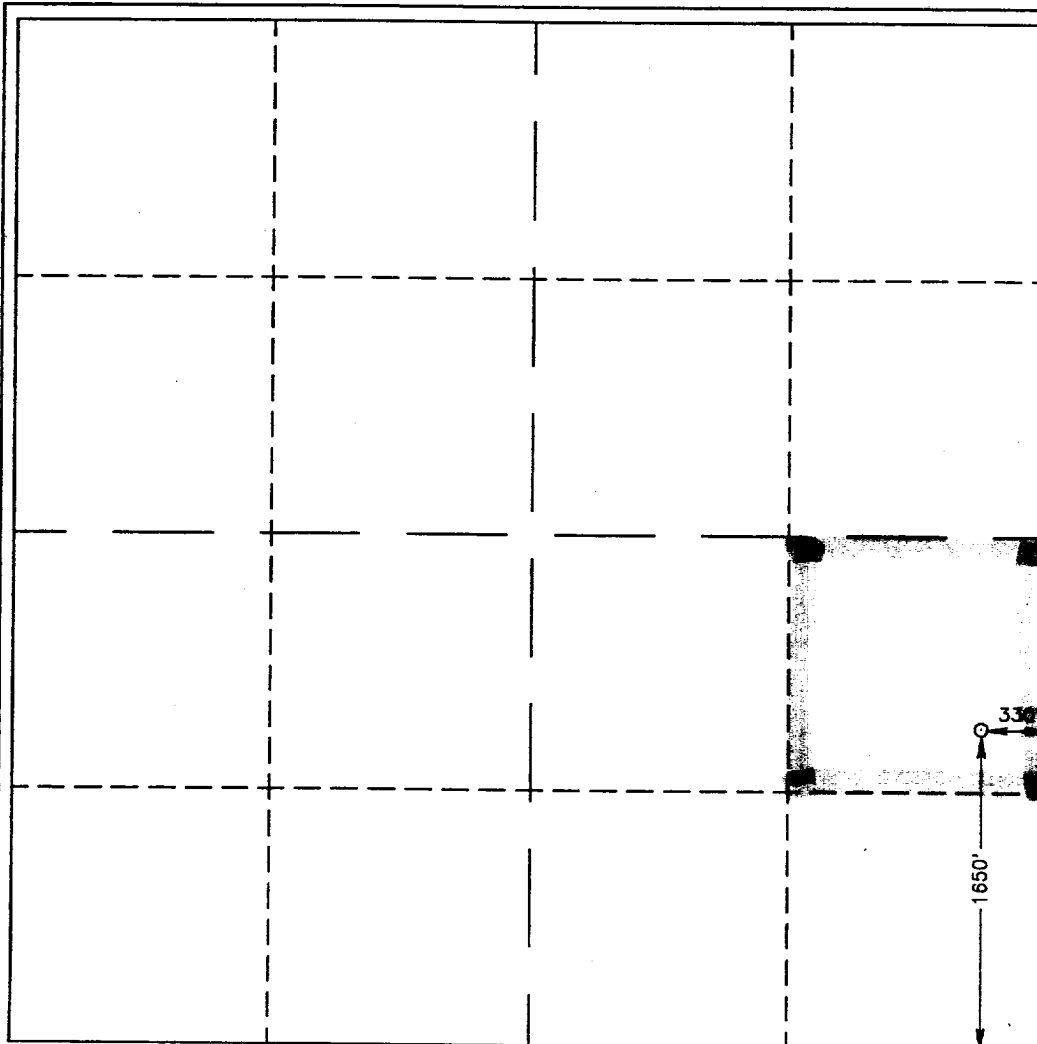
Surface Location

UL or lot No.	Section	Township	Range	Lot Idn	Feet from the	North/South line	Feet from the	East/West line	County
1	20	17 S	29 E		1650	SOUTH	330	EAST	EDDY

Bottom Hole Location If Different From Surface

UL or lot No.	Section	Township	Range	Lot Idn	Feet from the	North/South line	Feet from the	East/West line	County
Dedicated Acres	Joint or Infill	Consolidation Code	Order No.						
40									

NO ALLOWABLE WILL BE ASSIGNED TO THIS COMPLETION UNTIL ALL INTERESTS HAVE BEEN CONSOLIDATED
OR A NON-STANDARD UNIT HAS BEEN APPROVED BY THE DIVISION



OPERATOR CERTIFICATION

I hereby certify the the information
contained herein is true and complete to the
best of my knowledge and belief.

Dean Chumbley
Signature

DEAN CHUMBLEY

Printed Name

LANDMAN

Title

AUGUST 16, 1999

Date

SURVEYOR CERTIFICATION

I hereby certify that the well location shown
on this plat was plotted from field notes of
actual surveys made by me or under my
supervision, and that the same is true and
correct to the best of my belief.

AUGUST 11, 1999

Date Surveyed JLP

Signature of Seal
Professional Surveyor

Ronald J. Edson
RONALD J. EDSON
3239
P.O. Num. 89-120647

Certificate No. RONALD J. EDSON. 3239
CARMICHAEL EDSON. 12641
MCDONALD. 12185