

District I
PO Box 1980, Hobbs NM 88241-1980

District II
811 South First, Artesia, NM 88210

District III
1000 Rio Brazos Rd., Aztec, NM 87410

District IV
2040 South Pacheco, Santa Fe, NM 87505

State of New Mexico
Energy, Minerals & Natural Resources Department

OIL CONSERVATION DIVISION
2040 South Pacheco
Santa Fe, NM 87505

Form C-101

Revised October 18, 1994

Instructions on back

Submit to Appropriate District Office

State Lease - 6 Copies

Fee Lease - 5 Copies

☐ AMENDED REPORT

APPLICATION FOR PERMIT TO DRILL, RE-ENTER, DEEPEN, PLUGBACK, OR ADD A ZONE

1 Operator Name and Address MARBOB ENERGY CORPORATION P.O. BOX 227 ARTESIA, NM 88210		2 OGRID Number 14049
		3 API Number 30-015-30732
4 Property Code 24828	5 Property Name MUSKEGON SOUTH STATE	6 Well No. 2

Surface Location

UL or lot no.	Section	Township	Range	Lot Idn	Feet from the	North/South line	Feet from the	East/West Line	County
I	20	17S	29E		2310	SOUTH	990	EAST	EDDY

Proposed Bottom Hole Location If Different From Surface

UL or lot no.	Section	Township	Range	Lot Idn	Feet from the	North/South line	Feet from the	East/West Line	County
UNDES. 9 Proposed Pool 1 EAST EMPIRE YESO 96610 10 Proposed Pool 2									

11 Work Type Code N	12 Well Type Code O	13 Cable/Rotary R	14 Lease Type Code S	15 Ground Level Elevation 3604
16 Multiple No	17 Proposed Depth 4200	18 Formation	19 Contractor L&M	20 Spud Date 09-01-99

Minimum WOC time 18 hrs. 21 Proposed Casing and Cement Program

Hole Size	Casing Size	Casing weight/foot	Setting Depth	Sacks of Cement	Estimated TOC
12 1/4"	7 7/8"	24#	350'	300	Surface
7 7/8"	5 1/2"	17#	4200'	SUFFICIENT TO COVER	
				200' ABOVE ALL KNOWN	Post FD-1
				O&G HORIZONS	8-27-99
					API & Loc

22 Describe the proposed program. If this application is to DEEPEN or PLUG BACK give the data on the present productive zone and proposed new productive zone. Describe the blowout prevention program, if any. Use additional sheets if necessary.

DRILL 12 1/4" HOLE TO 350', SET 8 5/8" CSG & CIRC CMT, NU 3000# BOPE - DRILL 7 7/8" HOLE TO TD @ APPX 4200', SET 5 1/2" CSG TO TD & CMT W/SUFFICIENT CMT TO COVER PRODUCTION ZONE PLUS A MINIMUM OF 200' OF CMT ABOVE PRODUCTION ZONE

SEE EXHIBIT ATTACHED

23 I hereby certify that the information given above is true and complete to the best of my knowledge and belief.

Signature: Robin Cockrum

Printed name: ROBIN COCKRUM

Title: PRODUCTION ANALYST

Date: 08-23-99

Phone: 748-3303

OIL CONSERVATION DIVISION

Approved By: ORIGINAL SIGNED BY TIM W. GUM
DISTRICT II SUPERVISOR

Approval Date: 8-24-99

Expiration Date: 8-24-00

Conditions of Approval:
Attached: ☐

DISTRICT I
P.O. Box 1980, Hobbs, NM 88241-1980

State of New Mexico
Energy, Minerals and Natural Resources Department

Form C-102
Revised February 10, 1994
Submit to Appropriate District Office
State Lease - 4 Copies
Fee Lease - 3 Copies

DISTRICT II
P.O. Drawer DD, Artesia, NM 88211-0719

DISTRICT III
1000 Rio Brazos Rd., Aztec, NM 87410

DISTRICT IV
P.O. BOX 2088, SANTA FE, N.M. 87504-2088

OIL CONSERVATION DIVISION
P.O. Box 2088
Santa Fe, New Mexico 87504-2088

☐ AMENDED REPORT

WELL LOCATION AND ACREAGE DEDICATION PLAT

API Number		Pool Code 96610	Pool Name EAST EMPIRE YESO
Property Code	Property Name MUSKEGON SOUTH STATE		Well Number 2
OGRID No. 14049	Operator Name MARBOB ENERGY CORPORATION		Elevation 3604

Surface Location

UL or lot No. 1	Section 20	Township 17 S	Range 29 E	Lot Idn	Feet from the 2310	North/South line SOUTH	Feet from the 990	East/West line EAST	County EDDY
--------------------	---------------	------------------	---------------	---------	-----------------------	---------------------------	----------------------	------------------------	----------------

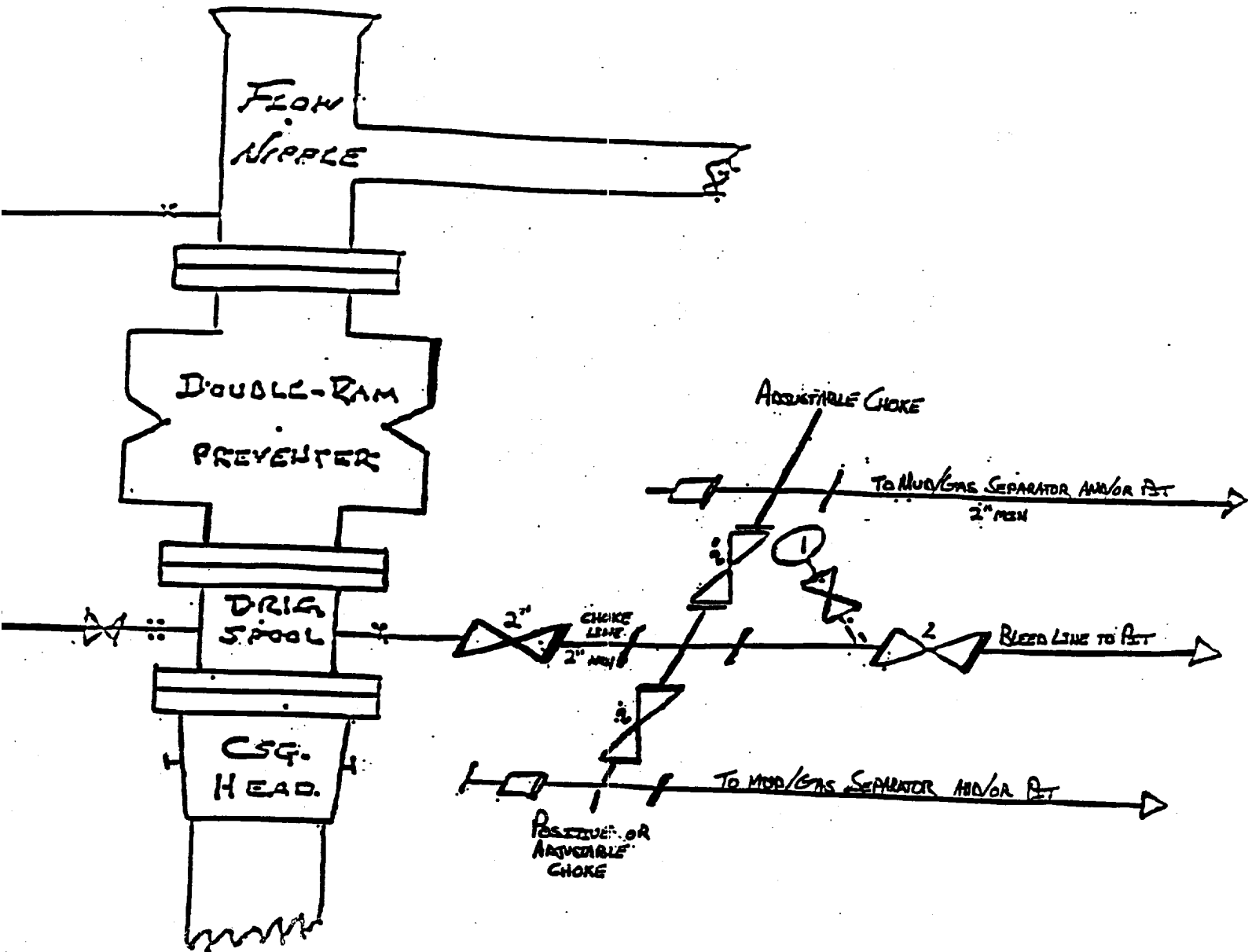
Bottom Hole Location If Different From Surface

UL or lot No.	Section	Township	Range	Lot Idn	Feet from the	North/South line	Feet from the	East/West line	County
Dedicated Acres 40		Joint or Infill	Consolidation Code		Order No.				

NO ALLOWABLE WILL BE ASSIGNED TO THIS COMPLETION UNTIL ALL INTERESTS HAVE BEEN CONSOLIDATED
OR A NON-STANDARD UNIT HAS BEEN APPROVED BY THE DIVISION

										OPERATOR CERTIFICATION	
										<i>I hereby certify the the information contained herein is true and complete to the best of my knowledge and belief.</i>	
										Signature <i>Robin Cockrum</i>	
										Printed Name ROBIN COCKRUM	
										Title PRODUCTION ANALYST	
										Date 8/23/99	
										SURVEYOR CERTIFICATION	
										<i>I hereby certify that the well location shown on this plat was plotted from field notes of actual surveys made by me or under my supervision, and that the same is true and correct to the best of my belief.</i>	
										Date Surveyed AUGUST 6, 1999	
										DMCC	
										Signature & Seal of Professional Surveyor <i>Ronald J. Eidson</i>	
										Professional Surveyor NEW MEXICO 3239 8-20-99	
										Certificate No. RONALD J. EIDSON 3239 12641 McDONALD 12185	

BJ OW OUT PREVENTER AND CHOKE MANIFOLD



*10"/900 Cameron SS Space Saver
3000# Working Pressure
3000# Working Pressure Choke Manifold*

Marbob Energy Corporation
Muskegon South State No. 2
2310' FSL & 990' FEL
Section 20; T17s - R29e
Eddy County, New Mexico