

N. M. Oil Cons. Division

811 S. 1ST ST.
ARTESIA, NM 88210-2834

Form 3160-3
(July 1992)

UNITED STATES DEPARTMENT OF THE INTERIOR BUREAU OF LAND MANAGEMENT

SUBMIT IN TRIPLICATE*
(Other instructions on
reverse side)

FORM APPROVED
OMB NO. 1004-0136
Expires: February 28, 1995

APPLICATION FOR PERMIT TO DRILL OR DEEPEN

1a. TYPE OF WORK

DRILL ☒

DEEPEN ☐

b. TYPE OF WELL

OIL
WELL ☒

GAS
WELL ☐

OTHER ☐

SINGLE
ZONE ☐

MULTIPLE
ZONE ☐

2. NAME OF OPERATOR

MARBOB ENERGY CORPORATION

3. ADDRESS AND TELEPHONE NO.

P.O. BOX 227, ARTESIA, NM 88210 505-748-3303

4. LOCATION OF WELL (Report location clearly and in accordance with any State requirements.)

At surface 330 FSL 990 FEL

At proposed prod. zone

SAME

14. DISTANCE IN MILES AND DIRECTION FROM NEAREST TOWN OR POST OFFICE*

EAST OF ARTESIA ON US 82 APPROX 20.2 MILES

15. DISTANCE FROM PROPOSED*

LOCATION TO NEAREST
PROPERTY OR LEASE LINE, FT.
(Also to nearest drig. unit line, if any)

330'

16. NO. OF ACRES IN LEASE

400

17. NO. OF ACRES ASSIGNED
TO THIS WELL

40

18. DISTANCE FROM PROPOSED LOCATION*
TO NEAREST WELL, DRILLING, COMPLETED,
OR APPLIED FOR, ON THIS LEASE, FT.

19. PROPOSED DEPTH

5000'

20. ROTARY OR CABLE TOOLS

ROTARY

21. ELEVATIONS (Show whether DF, RT, GR, etc.)

3563' GR

22. APPROX. DATE WORK WILL START*
08/23/99

23.

PROPOSED CASING AND CEMENTING PROGRAM

SIZE OF HOLE

GRADE, SIZE OF CASING

WEIGHT PER FOOT

SETTING DEPTH

QUANTITY OF CEMENT

12 1/4"

J-55, 8 5/8"

24#

350'

300 SX, CIRC

7 7/8"

J-55, 5 1/2"

17#

5000'

SUFFICIENT TO COVER 200' ABOVE
ALL KNOWN O&G HORIZONS

PAY ZONE WILL BE SELECTIVELY PERFORATED AND STIMULATED AS NEEDED FOR OPTIMUM PRODUCTION

ATTACHED ARE: 1. WELL LOCATION AND ACREAGE DEDICATION PLAT
2. SUPPLEMENTAL DRILLING DATA
3. SURFACE USE PLAN

Post ID-1
8-27-99
API & Loc

IN ABOVE SPACE DESCRIBE PROGRAM: If proposal is to deepen, give data on present productive zone and proposed new productive zone. If proposal is to drill or deepen directionally, give pertinent data on subsurface locations and measured and true vertical depths. Give blowout preventer program, if any.

24.

SIGNED

Robin Cockerum

TITLE PRODUCTION ANALYST

DATE 07/23/99

(This space for Federal or State office use)

PERMIT NO.

APPROVAL DATE

Application approval does not warrant or certify that the applicant holds legal or equitable title to those rights in the subject lease which would entitle the applicant to conduct operations thereon.
CONDITIONS OF APPROVAL, IF ANY:

Acting Assistant Field Office Manager,
Lands and Minerals

APPROVED BY

(ORIG. SGD.) ARMANDO A. LOPEZ

TITLE

DATE

8/24/99

*See Instructions On Reverse Side

Title 18 U.S.C. Section 1001, makes it a crime for any person knowingly and willfully to make to any department or agency of the United States any false, fictitious or fraudulent statements or representations as to any matter within its jurisdiction.

RECEIVED

JUL 26 1988

FILED
JUL 26 1988

DISTRICT I

P.O. Box 1980, Hobbs, NM 88241-1980

DISTRICT II

P.O. Drawer 100, Artesia, NM 88211-0710

DISTRICT III

1000 Rio Brazos Rd., Aztec, NM 87410

DISTRICT IV

P.O. Box 2088, Santa Fe, NM 87504-2088

State of New Mexico

Energy, Minerals and Natural Resources Department

Form C-102

Revised February 10, 1994

Submit to Appropriate District Office

State Lease - 4 Copies

Fee Lease - 3 Copies

OIL CONSERVATION DIVISION

P.O. Box 2088

Santa Fe, New Mexico 87504-2088

☐ AMENDED REPORT

WELL LOCATION AND ACREAGE DEDICATION PLAT

API Number	Pool Code 96610	Pool Name EAST EMPIRE YESO
Property Code 23171	Property Name B-440 FEDERAL	Well Number 7
OGRID No. 14049	Operator Name MARBOB ENERGY CORPORATION	Elevation 3563

Surface Location

UL or lot No.	Section	Township	Range	Lot Idn	Feet from the	North/South line	Feet from the	East/West line	County
P	27	17 S	29 E		330	SOUTH	990	EAST	EDDY

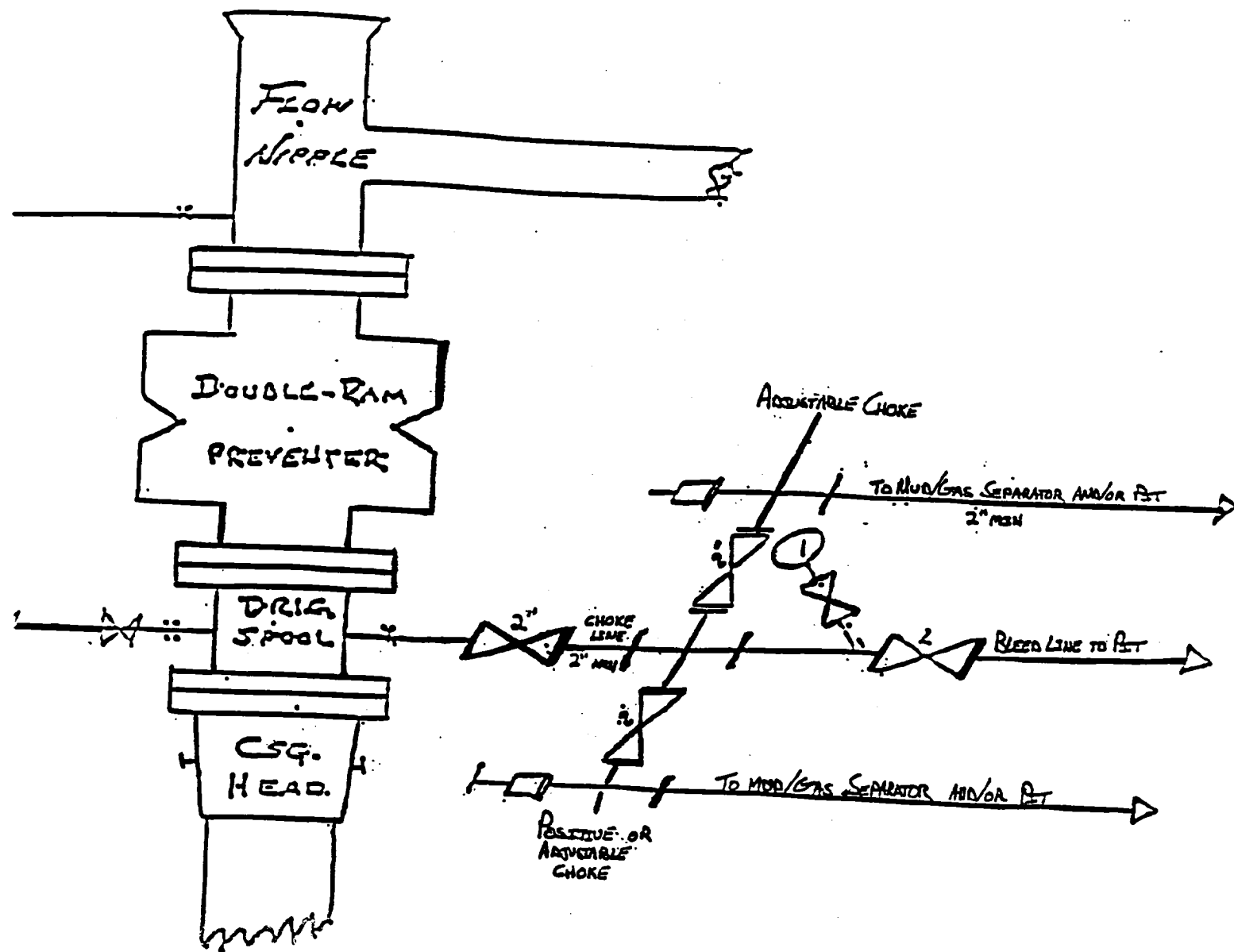
Bottom Hole Location If Different From Surface

UL or lot No.	Section	Township	Range	Lot Idn	Feet from the	North/South line	Feet from the	East/West line	County
Dedicated Acres 40	Joint or Infill	Consolidation Code	Order No.						

NO ALLOWABLE WILL BE ASSIGNED TO THIS COMPLETION UNTIL ALL INTERESTS HAVE BEEN CONSOLIDATED
OR A NON-STANDARD UNIT HAS BEEN APPROVED BY THE DIVISION

	OPERATOR CERTIFICATION I hereby certify the the information contained herein is true and complete to the best of my knowledge and belief. <u>Robin Cockrum</u> Signature ROBIN COCKRUM Printed Name PRODUCTION ANALYST Title 7/23/99 Date
	SURVEYOR CERTIFICATION I hereby certify that the well location shown on this plat was plotted from field notes of actual surveys made by me or under my supervision, and that the same is true and correct to the best of my belief. JULY 14, 1999 Date Surveyed Signature & Seal Professional Surveyor NEW MEXICO 3339 7-15-99 P.O. Num 99-100583 Certificate No. RONALD J. EIDSON, 3239 GARY G. EIDSON, 12641 MCGON MCDONALD, 12185

BLOW OUT PREVENTER AND CHOKE MANIFOLD



10"/900 Cameron SS Space Saver
3000# Working Pressure
3000# Working Pressure Choke Manifold

B 440 Federal No. 7
330' FSL & 990' FEL
Section 27; T17S - R29E
Eddy County, New Mexico

Attachment to Exhibit #1
NOTES REGARDING THE BLOWOUT PREVENTERS

1. Drilling nipple to be so constructed that it can be removed without use of a welder through rotary table opening, with minimum I.D. equal to preventer bore.
2. Wear ring to be properly installed in head.
3. Blow out preventer and all fittings must be in good condition, 3000 psi W.P. minimum.
4. All fittings to be flanged.
5. Safety valve must be available on rig floor at all times with proper connections, valve to be full bore 3000 psi W.P. minimum.
6. All choke and fill lines to be securely anchored, especially ends of choke lines.
7. Equipment through which bit must pass shall be at least as large as the diameter of the casing being drilled through.
8. Kelly cock on kelly.
9. Extension wrenches and hand wheels to be properly installed.
10. Blow out preventer control to be located as close to driller's position as feasible.
11. Blow out preventer closing equipment to include minimum 40 gallon accumulator, two independent sources of pump power on each closing unit installation, and meet all API specifications.