

UNITED STATES
DEPARTMENT OF THE INTERIOR
BUREAU OF LAND MANAGEMENT

SUBMIT IN DUPLICATE*
(Other instructions on
reverse side)

FORM APPROVED
OMB NO. 1004-0136
Expires: February 28, 1995

APPLICATION FOR PERMIT TO DRILL OR DEEPEN

1a. TYPE OF WORK DRILL <input checked="" type="checkbox"/> DEEPEN <input type="checkbox"/>			5. LEASE DESIGNATION AND SERIAL NO. LC-029020 C		
b. TYPE OF WELL OIL WELL <input checked="" type="checkbox"/> GAS WELL <input type="checkbox"/> OTHER <input type="checkbox"/> SINGLE ZONE <input type="checkbox"/> MULTIPLE ZONE <input type="checkbox"/>			6. IF INDIAN, ALLOTTEE OR TRIBE NAME		
2. NAME OF OPERATOR PREMIER OIL & GAS, INC			7. UNIT AGREEMENT NAME 9375		
3. ADDRESS AND TELEPHONE NO. P.O. BOX 1246, ARTESIA, NM 88210 505-748-2093			8. FARM OR LEASE NAME, WELL NO. DALE H PARKE A TR 2 #27		
4. LOCATION OF WELL (Report location clearly and in accordance with any State requirements.) At surface 330 FSL 1650 FWL At proposed prod. zone SAME Unit N			9. API WELL NO. 30-015-31101		
14. DISTANCE IN MILES AND DIRECTION FROM NEAREST TOWN OR POST OFFICE* EAST OF LOCO HILLS ON US 82 APPX 1.3 MILES			10. FIELD AND POOL, OR WILDCAT LOCO HILLS PADDOCK		
15. DISTANCE FROM PROPOSED* LOCATION TO NEAREST PROPERTY OR LEASE LINE, FT (Also to nearest drlg. unit line, if any) 330'			11. SEC., T., R., M., OR BLK. AND SURVEY OR AREA SEC. 15-T17S-R30E		
16. NO. OF ACRES IN LEASE 40			12. COUNTY OR PARISH EDDY		
17. NO. OF ACRES ASSIGNED TO THIS WELL 40			13. STATE NM		
18. DISTANCE FROM PROPOSED LOCATION* TO NEAREST WELL, DRILLING, COMPLETED, OR APPLIED FOR, ON THIS LEASE, FT.			20. ROTARY OR CABLE TOOLS ROTARY		
21. ELEVATIONS (Show whether DF, RT, GR, etc.) 3675'			22. APPROX. DATE WORK WILL START* 04/03/00		

23. PROPOSED CASING AND CEMENTING PROGRAM				
SIZE OF HOLE	GRADE, SIZE OF CASING	WEIGHT PER FOOT	SETTING DEPTH	QUANTITY OF CEMENT
12 1/4"	J-55, 8 5/8"	24#	425'	300 SX, CIRC
7 7/8"	J-55, 5 1/2"	17#	6000'	SUFFICIENT TO COVER 200' ABOVE ALL KNOWN O&G HORIZONS

PAY ZONE WILL BE SELECTIVELY STIMULATED AND PERFORATED AS NEEDED FOR OPTIMUM PRODUCTION

ATTACHED ARE: 1. WELL LOCATION AND ACREAGE DEDICATION PLAT
2. SURFACE USE PLAN
3. SUPPLEMENTAL DRILLING DATA

APPROVAL SUBJECT TO
GENERAL REQUIREMENTS AND
SPECIAL STIPULATIONS



IN ABOVE SPACE DESCRIBE PROGRAM: If proposal is to deepen, give data on present productive zone and proposed new productive zone. If proposal is to drill or deepen directionally, give pertinent data on subsurface locations and measured and true vertical depths. Give blowout preventer program, if any.

24. SIGNED Rosalie Jones TITLE PRESIDENT DATE 03/03/00
(This space for Federal or State office use)

PERMIT NO. _____ APPROVAL DATE _____

Application approval does not warrant or certify that the applicant holds legal or equitable title to those rights in the subject lease which would entitle the applicant to conduct operations thereon.
CONDITIONS OF APPROVAL, IF ANY:

APPROVED BY /S/LARRY D. BRAY TITLE Assistant Field Manager, Lands And Minerals DATE APR 10 2000

*See Instructions On Reverse Side

Title 18 U.S.C. Section 1001, makes it a crime for any person knowingly and willfully to make to any department or agency of the United States any false, fictitious or fraudulent statements or representations as to any matter within its jurisdiction.



DISTRICT I
P.O. Box 1980, Hobbs, NM 88241-1980

State of New Mexico
Energy, Minerals and Natural Resources

Form C-102
Revised February 10, 1994
Submit to Appropriate District Office
State Lease - 4 Copies
Fee Lease - 3 Copies

DISTRICT II
P.O. Drawer DD, Artesia, NM 88211-0719

DISTRICT III
1000 Rio Brazos Rd., Aztec, NM 87410

DISTRICT IV
P.O. BOX 2088, SANTA FE, N.M. 87504-2088

OIL CONSERVATION DIVISION

P.O. Box 2088
Santa Fe, New Mexico 87504-2088

☐ AMENDED REPORT

WELL LOCATION AND ACREAGE DEDICATION PLAT

API Number	Pool Code 96718	Pool Name LOCO HILLS PADDOCK
Property Code	Property Name DALE H. PARKE A TR. 2	Well Number 27
OGRID No. 17985	Operator Name PREMIER OIL & GAS, INC.	Elevation 3675


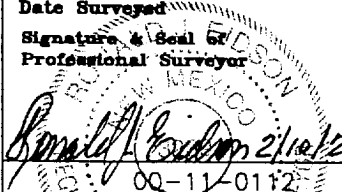
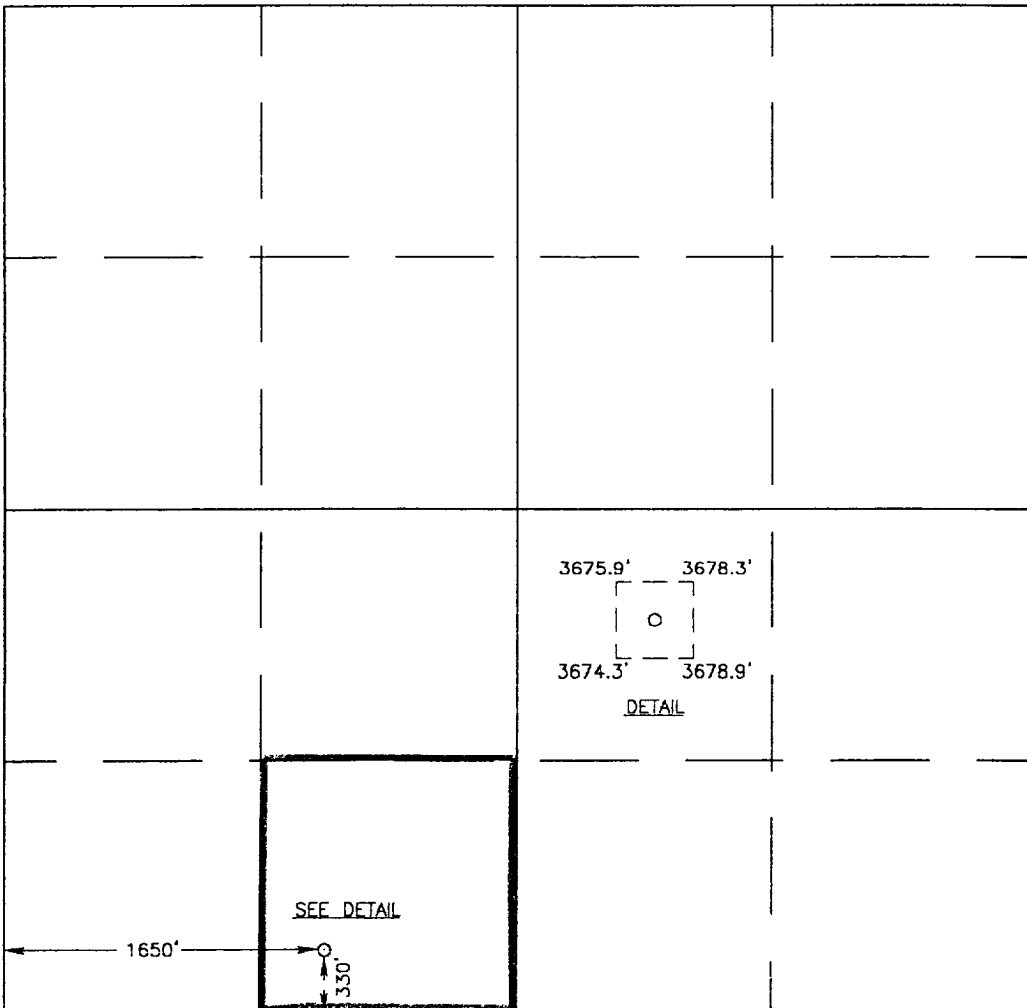
Surface Location

UL or lot No. N	Section 15	Township 17 S	Range 30 E	Lot Idn	Feet from the 330	North/South line SOUTH	Feet from the 1650	East/West line WEST	County EDDY
--------------------	---------------	------------------	---------------	---------	----------------------	---------------------------	-----------------------	------------------------	----------------

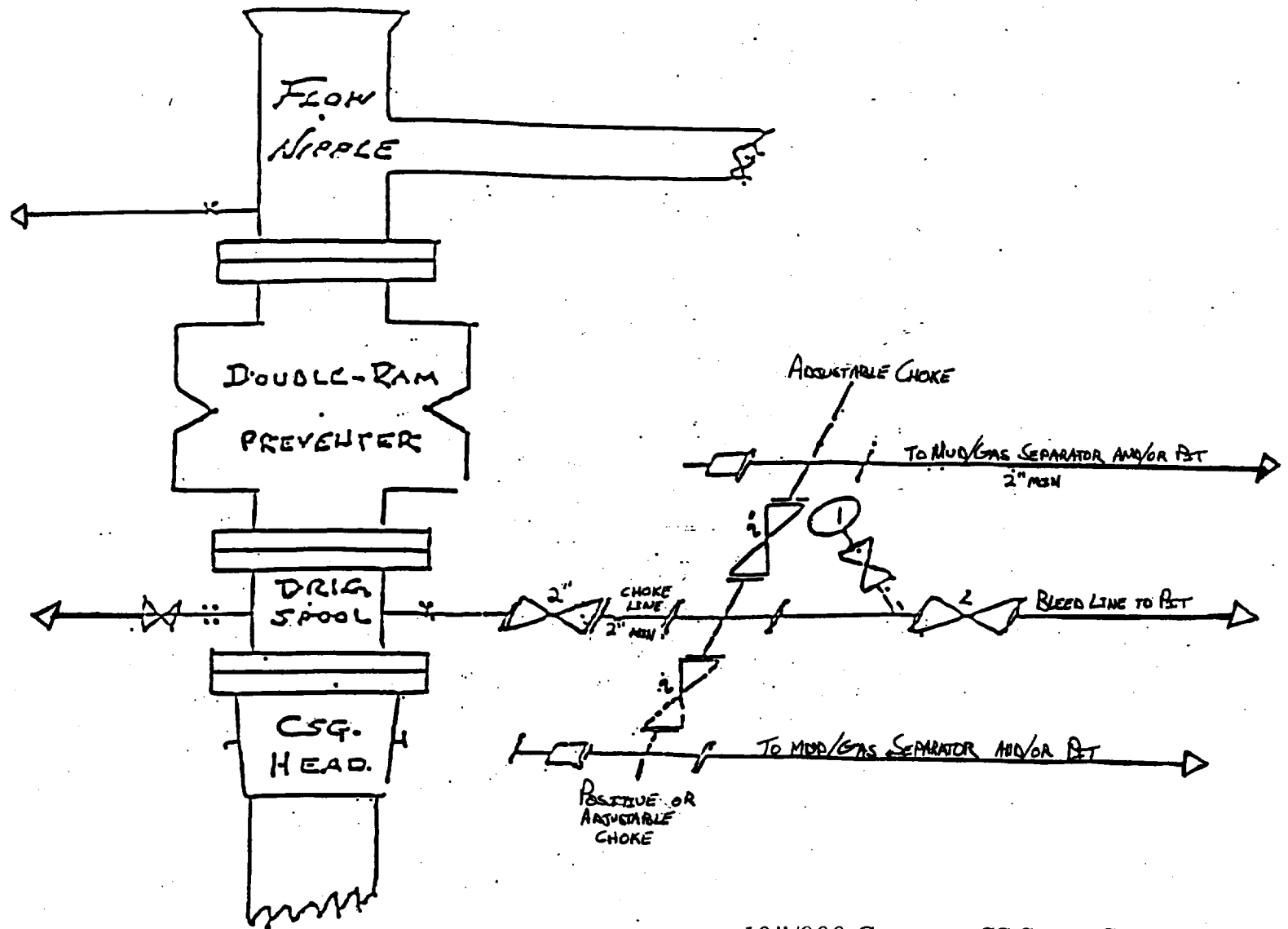
Bottom Hole Location If Different From Surface

UL or lot No.	Section	Township	Range	Lot Idn	Feet from the	North/South line	Feet from the	East/West line	County
Dedicated Acres 40	Joint or Infill	Consolidation Code	Order No.						

NO ALLOWABLE WILL BE ASSIGNED TO THIS COMPLETION UNTIL ALL INTERESTS HAVE BEEN CONSOLIDATED
OR A NON-STANDARD UNIT HAS BEEN APPROVED BY THE DIVISION

				OPERATOR CERTIFICATION I hereby certify the the information contained herein is true and complete to the best of my knowledge and belief.  Signature ROSALIE JONES Printed Name PRESIDENT Title 3/3/00 Date			
				SURVEYOR CERTIFICATION I hereby certify that the well location shown on this plat was plotted from field notes of actual surveys made by me or under my supervision, and that the same is true and correct to the best of my belief. FEBRUARY 7, 2000 Date Surveyed DC  Signature & Seal of Professional Surveyor RONALD J. EDSON Certification No. 3239 GARY EDSON 12641 GAYLON McDONALD 12185			
				 DETAIL			

BLOW OUT PREVENTER AND CHOKE MANIFOLD



10"/900 Cameron SS Space Saver
3000# Working Pressure
3000# Working Pressure Choke Manifold.

PREMIER OIL & GAS INC.

DRILLING PROGRAM

Attached to Form 3160-3
Premier Oil and Gas, Inc.
Dale H. Parke "A" Tract 2 No. 27
330' FSL and 1650' FWL
Section 15-17S-30E
Eddy County, New Mexico

1. **Geologic Name of Surface Formation:**

Permian

2. **Estimated Tops of Important Geologic Markers:**

Permian	Surface	Seven Rivers	1145'
Salt	475'	Queen	1815'
Base of Salt	780'	Grayburg	2140'
Yates	930'	San Andres	2510'
		Glorietta	3900'

3. **Estimated Depths of Anticipated Fresh Water, Oil or Gas:**

Upper Permian Sands	100'	Fresh Water
Yates	930'	Oil
Seven Rivers	1145'	Oil
Queen	1815'	Oil
Grayburg	2140'	Oil
San Andres	2510'	Oil
Glorietta	3900'	Oil

No other formations are expected to give up oil, gas, or fresh water in measurable quantities. The surface fresh water sands will be protected by setting 8 5/8 casing at 425' and circulating cement back to surface. Any shallower zones above TD which contain commercial quantities of oil and/or gas will have cement circulated across them by inserting a float shoe joint into the 5 1/2" production casing which will be run at TD.

4. **Casing Program:**

<u>Hole Size</u>	<u>Interval</u>	<u>OD csg</u>	<u>Weight, Grade, Jt. Cond. Type</u>				
12 1/4"	0 - 425'	8 5/8"	24#	J-55	LTC NEW	R-3	
7 7/8"	0 - TD	5 1/2"	17#	J-55	LTC NEW	R-3	

DRILLING PROGRAM
PAGE 2

Cement Program:

- 8 5/8" Surface Casing: Cemented to surface with 300sx of Class C w/2% cc.
- 5 1/2" Production Casing: Cemented to sufficiently cover 200' above all oil and gas horizons.

5. **Minimum Specifications for Pressure Control:**

The blowout preventer equipment (BOP) shown in Exhibit #1 will consist of a double ram-type (3000 psi wp) preventer. This unit will be hydraulically operated and the ram-type preventer will be equipped with blind rams on top and 4-1/2" drill pipe rams on bottom. This BOP will be nipped up on the 8 5/8" surface csg and used continuously until TD is reached. All BOP's and accessory equipment will be tested to 3000 psi before drilling out of surface casing.

Pipe rams will be operationally checked each 24 hour period. Blind rams will be operationally checked on each trip out of the hole. These checks will be noted on the daily tour sheets. A 2" kill line and a 3" choke line will be included in the drilling spool located below the ram-type BOP. Other accessories to the BOP equipment will include a kelly cock and floor safety valve (inside BOP) and choke lines and choke manifold with 3000 psi WP rating.

6. **Types and Characteristics of the Proposed Mud System:**

The well will be drilled to TD with cut brine. The applicable depths and properties of this system are as follows:

<u>Depth</u>	<u>Type</u>	<u>Weight (ppg)</u>	<u>Viscosity (sec)</u>	<u>Waterloss (cc)</u>
0 - 425'	Fresh Water (Spud)	8.5	28	N.C.
350'-6000'	Brine	9.8 - 10.2	40 - 45	N.C.

7. **Auxiliary Well Control and Monitoring Equipment:**

- (A) A kelly cock will be kept in the drill string at all times.
- (B) A full opening drill pipe stabbing valve (inside BOP) with proper drill pipe connections will be on the rig floor at all times.

DRILLING PROGRAM
PAGE 3

8. Logging, Testing, and Coring Program:

- (A) No Drillstem tests are anticipated.
- (B) The electric logging program will consist of Dual Laterolog Micro SFL, Spectral Density Dual Spaced Neutron Csng Log; and Depth Control Log.
- (C) No conventional coring is anticipated.
- (D) Further testing procedures will be determined after the 5 1/2" production casing has been cemented at TD based on drill shows, and log evaluation, and drill stem test results.

9. Abnormal Conditions, Pressures, Temperatures, & Potential Hazards:

No abnormal pressures or temperatures are anticipated. The estimated bottom hole temperature (BHT) at TD is 105° and estimated bottom hole pressure (BHP) is 2218 psig.

10. Anticipated Starting Date and Duration of Operations:

Location and road work will not begin until approval has been received from the BLM. The anticipated spud date is April 3, 2000. Once commenced, the drilling operation should be finished in approximately 21 days. If the well is productive, an additional 30 to 60 days will be required for completion and testing before a decision is made to install permanent facilities.