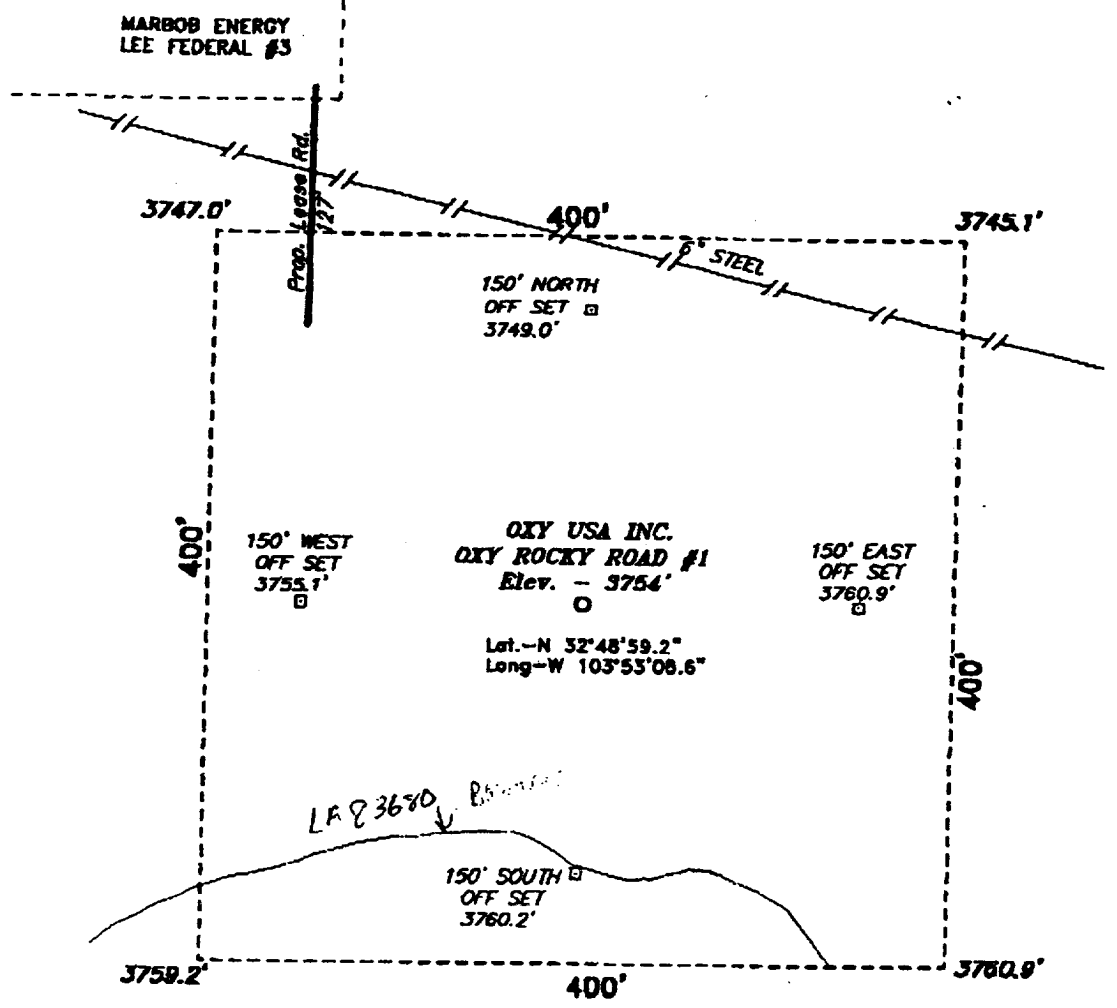
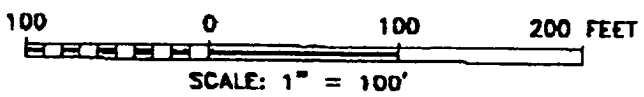


**SECTION 20, TOWNSHIP 17 SOUTH, RANGE 31 EAST, N.M.P.M.,
EDDY COUNTY, NEW MEXICO.**



DIRECTIONS TO LOCATION:

FROM THE JUNCTION OF CO. RD. 222 AND US HWY 82, GO WEST ON HWY 82 APPROX. 0.5 MILE TO A POINT WHICH LIES APPROX. 400 FEET SOUTH OF THE WELL LOCATION



Oxy USA Inc.	
REF: Oxy Rocky Road #1 / Well Pad Topo	
THE OXY ROCKY ROAD No. 1 LOCATED 1335' FROM THE SOUTH LINE AND 760' FROM THE EAST LINE OF SECTION 20, TOWNSHIP 17 SOUTH, RANGE 31 EAST, N.M.P.M., EDDY COUNTY, NEW MEXICO.	

BASIN SURVEYS P.O. BOX 1786-HOBBS, NEW MEXICO

W.O. Number: 0405 Drawn By: **K. GOAD**

Date: 07-27-2000 Disk: KJG #122 - 0405A.DWG

Survey Date: 07-26-2000 Sheet 1 of 1 Sheets