

NO. OF COPIES RECEIVED	6
DISTRIBUTION	
SANTA FE	1
FILE	1 ✓
U.S.G.S.	2
LAND OFFICE	1
OPERATOR	1

NEW MEXICO OIL CONSERVATION COMMISSION

Form C-101
Revised 1-1-65

RECEIVED

SEP 10 1974

APPLICATION FOR PERMIT TO DRILL, DEEPEN, OR PLUG BACK

1a. Type of Work		O.C.C. ARTESIA PLUG BACK <input type="checkbox"/>		7. Unit Agreement Name	Artesia Metex Unit
b. Type of Well		DRILL <input type="checkbox"/>	DEEPEN <input type="checkbox"/>	8. Farm or Lease Name	
OIL WELL <input checked="" type="checkbox"/>	GAS WELL <input type="checkbox"/>	OTHER RE-ENTER		9. Well No.	
2. Name of Operator				23	
Yates Drilling Company ✓				10. Field and Pool, or Wildcat	
3. Address of Operator				Artesia	
207 So. 4th St., Artesia, N.M. 88210					
4. Location of Well		UNIT LETTER N	LOCATED 2410	FEET FROM THE West LINE	
AND 330		FEET FROM THE South		LINE OF SEC. 19 TWP. 18S RGE. 28E NMPM	
				12. County	
				Eddy	
		19. Proposed Depth		19A. Formation	
		2058		Grayburg	
		21A. Kind & Status Plug. Bond		20. Rotary or C.T.	
		Blanket		Reverse Unit	
21. Elevations (Show whether DF, RT, etc.)		21B. Drilling Contractor		22. Approx. Date Work will start	
356'				As soon as possible	

23.

PROPOSED CASING AND CEMENT PROGRAM

SIZE OF HOLE	SIZE OF CASING	WEIGHT PER FOOT	SETTING DEPTH	SACKS OF CEMENT	EST. TOP Surface
10"	8-5/8"	24#	439	50	1600
8"	5"	14"	1922	50	

Propose to re-enter, clean out to old TD of 2058, run GR-Neutron log, perforate Loco Hills zone if necessary. Will run 2-3/8" tbg, rods and pump and put well on production.

Previous operator and well name : Gulf Oil Corporation
Artesia State (NCT-A) #1. P+A approved 1-17-62

APPROVAL VALID
FOR 90 DAYS UNLESS
DRILLING COMMENCED,
EXPIRES 12-10-74

IN ABOVE SPACE DESCRIBE PROPOSED PROGRAM: IF PROPOSAL IS TO DEEPEN OR PLUG BACK, GIVE DATA ON PRESENT PRODUCTIVE ZONE AND PROPOSED NEW PRODUCTIVE ZONE. GIVE BLOWOUT PREVENTER PROGRAM, IF ANY.

I hereby certify that the information above is true and complete to the best of my knowledge and belief.

Signed [Signature] Title Engineer Date Aug. 5, 1974

(This space for State Use)

APPROVED BY [Signature] TITLE OIL AND GAS INSPECTOR DATE SEP 10 1974

CONDITIONS OF APPROVAL, IF ANY:

NEW MEXICO OIL CONSERVATION COMMISSION
WELL LOCATION AND ACREAGE DEDICATION PLAT

Form C-102
Supersedes C-128
Effective 1-1-65

All distances must be from the outer boundaries of the Section.

Operator <i>Yates Drilling Company</i>		Lease <i>Artesia Metex Unit Water Flood</i>		Well No. <i>23</i>
Unit Letter <i>N</i>	Section <i>19</i>	Township <i>18 South</i>	Range <i>28 East</i>	County <i>Eddy</i>
Actual Footage Location of Well: <i>330</i> feet from the <i>South</i> line and <i>2410</i> feet from the <i>West</i> line				
Ground Level Elev. <i>3562</i>	Producing Formation <i>N.G.</i>	Pool <i>Artesia</i>	Dedicated Acreage: Acres	

1. Outline the acreage dedicated to the subject well by colored pencil or hachure marks on the plat below.
2. If more than one lease is dedicated to the well, outline each and identify the ownership thereof (both as to working interest and royalty).
3. If more than one lease of different ownership is dedicated to the well, have the interests of all owners been consolidated by communitization, unitization, force-pooling, etc?

RECEIVED

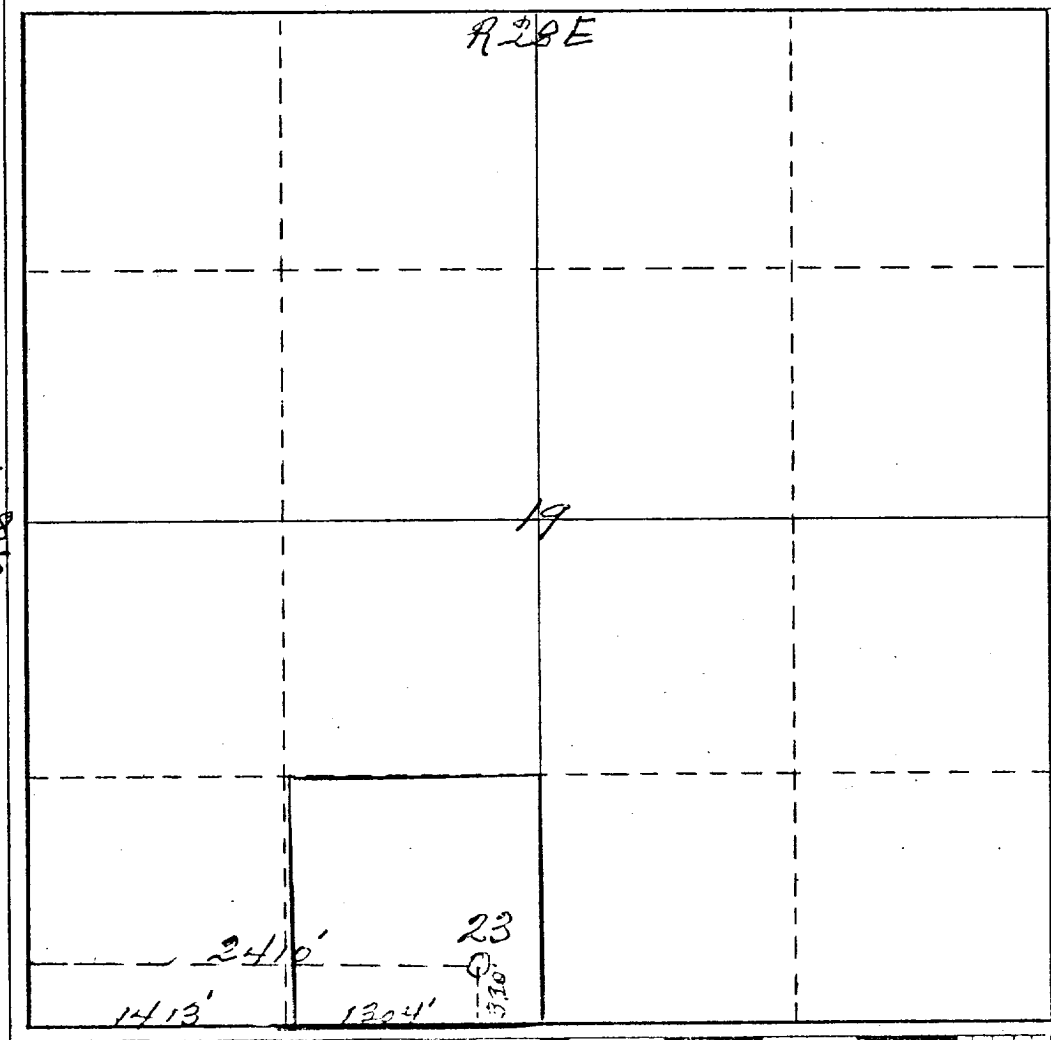
SEP - 5 1974

Yes No If answer is "yes," type of consolidation _____

If answer is "no," list the owners and tract descriptions which have actually been consolidated (Use reverse side of this form if necessary.) _____

O. C. C.
ARTESIA, OFFICE

No allowable will be assigned to the well until all interests have been consolidated (by communitization, unitization, forced-pooling, or otherwise) or until a non-standard unit, eliminating such interests, has been approved by the Commission.



CERTIFICATION

I hereby certify that the information contained herein is true and complete to the best of my knowledge and belief.

Peyton Yates
Name
Peyton Yates

Position
Engineer

Company
Yates Drilling Company

Date
August 1, 1974

I hereby certify that the well location shown on this plat was plotted from field notes of actual surveys made by me or under my supervision, and that the same is true and correct to the best of my knowledge and belief.

JAMES H. BROWN
REGISTERED PROFESSIONAL ENGINEER

Date Surveyed
June 7th 1974
Registered Professional Engineer
and/or Land Surveyor

James H. Brown
Certificate No. *542*

