

NO. OF COPIES RECEIVED	4
DISTRIBUTION	
SANTA FE	1
FILE	1
U.S.G.S.	2
LAND OFFICE	1
OPERATOR	1

NEW MEXICO OIL CONSERVATION COMMISSION

RECEIVED

SEP - 6 1974

Form C-101  
Revised 1-4-65

5A. Indicate Type of Lease  
STATE  FEE

5. State Oil & Gas Lease No.

APPLICATION FOR PERMIT TO DRILL, DEEPEN, OR PLUG BACK

1a. Type of Work  
 DRILL  DEEPEN  SINGLE ZONE  MULTIPLE ZONE   
 b. Type of Well  
 OIL WELL  GAS WELL  OTHER RE-ENTER

7. Unit Agreement Name  
Artesia Metex Unit

8. Farm or Lease Name

2. Name of Operator  
Yates Drilling Company

9. Well No.  
21

3. Address of Operator  
207 So. 4th St., Artesia, N.M. 88210

10. Field and Pool, or Wildcat  
Artesia

4. Location of Well  
 UNIT LETTER M LOCATED 330 FEET FROM THE South LINE  
 AND 1010 FEET FROM THE West LINE OF SEC. 19 TWP. 18S RGE. 28E NMPM

12. County  
Eddy

19. Proposed Depth  
2100

19A. Formation  
Grayburg

20. Rotary or C.T.  
Reverse Unit

21. Elevations (Show whether DF, RT, etc.)  
3572 GL

21A. Kind & Status Plug. Bond  
Blanket

22. Approx. Date Work will start  
As soon as possible

23. PROPOSED CASING AND CEMENT PROGRAM

SIZE OF HOLE	SIZE OF CASING	WEIGHT PER FOOT	SETTING DEPTH	SACKS OF CEMENT	EST. TOP Surface
10"	8-5/8"	24#	440	55	1575
8"	5 1/2"	14#	1942	50	

Propose to re-enter, clean out to old T.D. of 2100', perforate Loco Hills zone 1879-85, 1889-95 w/2 shots/ft.

Will run 2-3/8" tbg, rods and pump and put well on production. Previous operator well name: Gulf Oil Corporation - Artesia State (NCT-A) #2.

APPROVAL VALID FOR 90 DAYS UNLESS DRILLING COMMENCED, EXPIRES 12-6-74

*Old records show well to be 3305-990 w*

IN ABOVE SPACE DESCRIBE PROPOSED PROGRAM: IF PROPOSAL IS TO DEEPEN OR PLUG BACK, GIVE DATA ON PRESENT PRODUCTIVE ZONE AND PROPOSED NEW TIVE ZONE. GIVE BLOWOUT PREVENTER PROGRAM, IF ANY.

I hereby certify that the information above is true and complete to the best of my knowledge and belief.

Signed Rayton Yates Title Engineer Date Aug. 5, 1974

APPROVED BY W.A. Gressett TITLE OIL AND GAS INSPECTOR DATE SEP 6 1974

CONDITIONS OF APPROVAL, IF ANY:

NEW MEXICO OIL CONSERVATION COMMISSION  
WELL LOCATION AND ACREAGE DEDICATION PLAT

Form C-102  
Supersedes C-128  
Effective 1-1-65

All distances must be from the outer boundaries of the Section.

Operator <i>Yates Drilling Company</i>		Lease <i>Antero</i>			Well No. <i>21</i>
Unit Letter <i>M</i>	Section <i>19</i>	Township <i>18 South</i>	Range <i>28 East</i>	County <i>Eddy</i>	
Actual Footage Location of Well: <i>330</i> feet from the <i>South</i> line and <i>1010</i> feet from the <i>West</i> line					
Ground Level Elev. <i>3573</i>	Producing Formation		Pool	Dedicated Acreage: Acres	

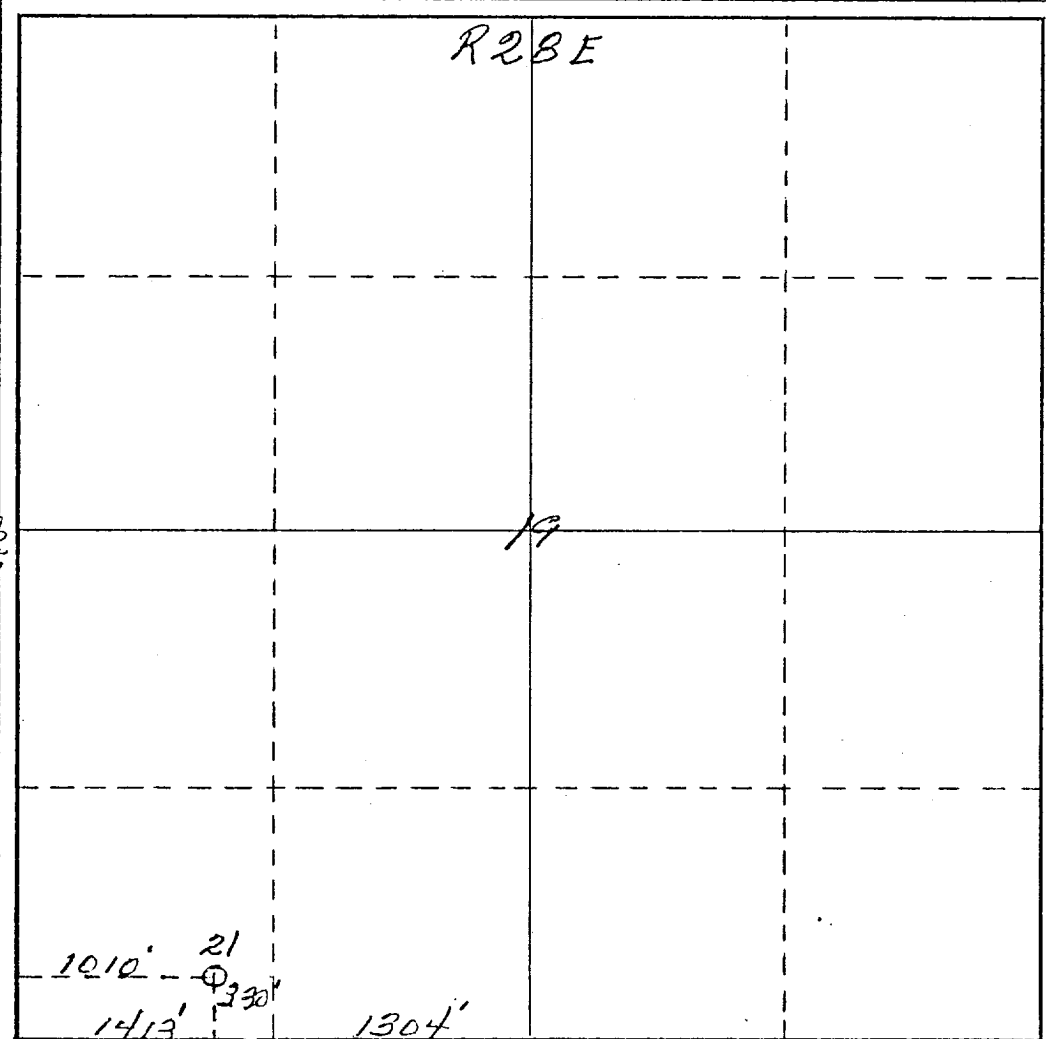
1. Outline the acreage dedicated to the subject well by colored pencil or hachure marks on the plat below.
2. If more than one lease is dedicated to the well, outline each and identify the ownership thereof (both as to working interest and royalty).
3. If more than one lease of different ownership is dedicated to the well, have the interests of all owners been consolidated by communitization, unitization, force-pooling, etc?

Yes  No If answer is "yes," type of consolidation \_\_\_\_\_

**RECEIVED**  
SEP 15 1974  
O. C. C.  
FIELD OFFICE

If answer is "no," list the owners and tract descriptions which have actually been consolidated. (Use reverse side of this form if necessary.) \_\_\_\_\_

No allowable will be assigned to the well until all interests have been consolidated (by communitization, unitization, forced-pooling, or otherwise) or until a non-standard unit, eliminating such interests, has been approved by the Commission.



**CERTIFICATION**

I hereby certify that the information contained herein is true and complete to the best of my knowledge and belief.

Name *Peyton Yates*  
Peyton Yates

Position  
Engineer

Company  
Yates Drilling Company

Date  
August 1, 1974

I hereby certify that the well location shown on this plat was plotted from field notes of actual surveys made by me or under my supervision, and that the same is true and correct to the best of my knowledge and belief.

Date Surveyed  
*June 7th 1974*

Registered Professional Engineer and/or Land Surveyor  
*James H. Brown*

Certificate No. *542*

T  
16  
5

