

Company Nix & Curtis

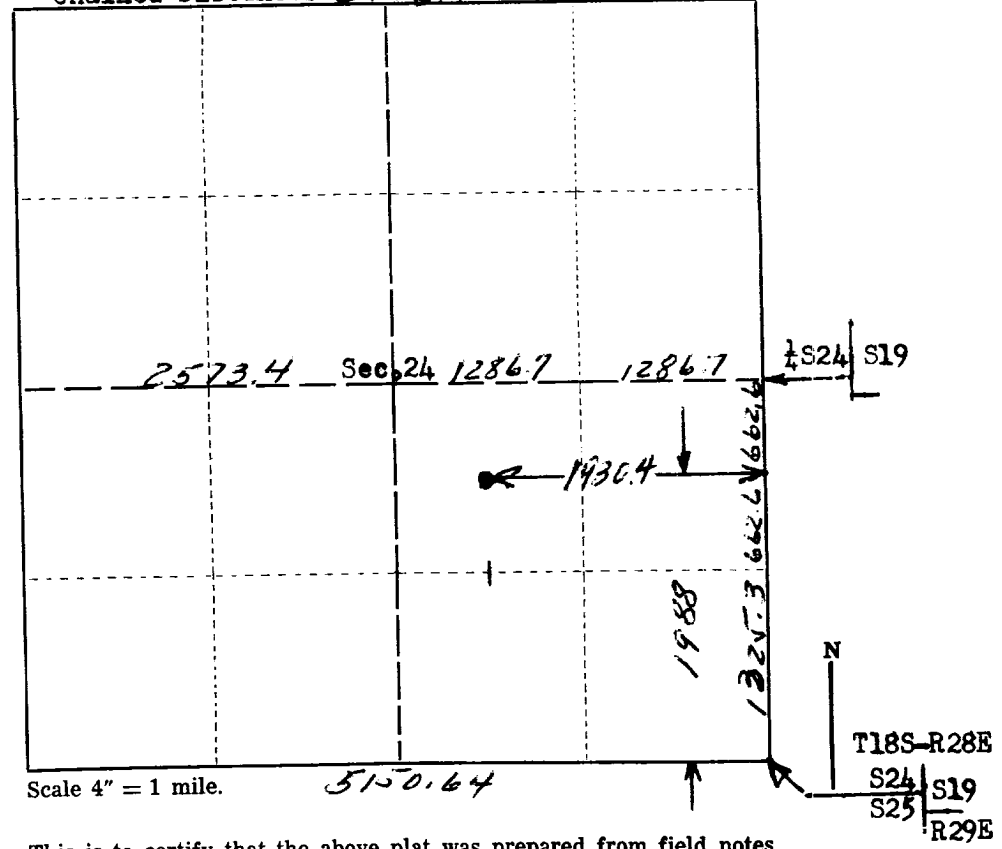
Lease Gulf State Well No. 2

Sec. 24 T. 18 S., R. 28 E., N.M.P.M.

Location NW 1/4 SE 1/4 (1987.9' from South Line & 1930.4' from East Line)

County Eddy New Mexico

Chained Distances 5143.4



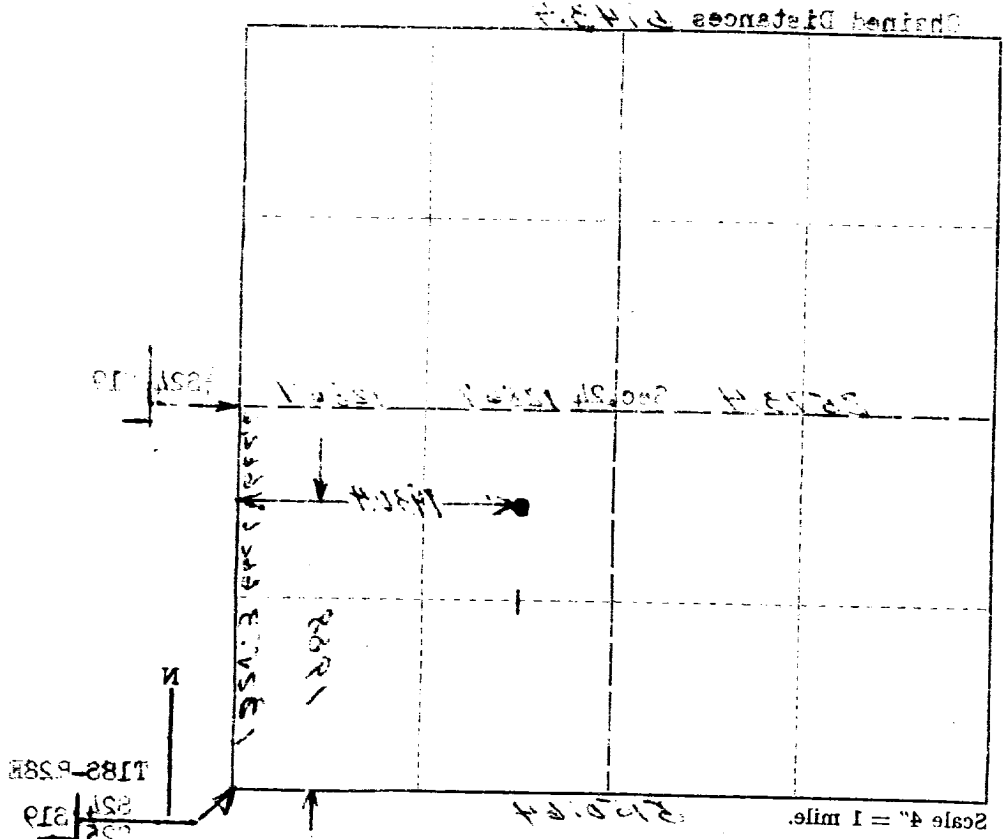
This is to certify that the above plat was prepared from field notes of actual surveys made by me or under my supervision and that the same are true and correct to the best of my knowledge and belief.

John A. Matlock Jr.
Registered Professional
Land Surveyor.

Seal:
Artesia, New Mexico

Surveyed March 16, _____, 1955

Company W. & C. Co.
 Lease Full State Well No. 5
 Sec. 34 T. 18 R. 36 E. MM
 Located on W. 1/2 (1937) from South line of 1930. A. from East line)
 County Wyo New Mexico



This is to certify that the above plat was prepared from field notes of actual surveys made by me or under my supervision and that the same are true and correct to the best of my knowledge and belief.

W. & C. Co.
 Registered Professional
 Surveyor and Land Surveyor

Seal:
 Artesia, New Mexico

Surveyed March 15, 1937