

NO. OF COPIES RECEIVED		6
DISTRIBUTION		
SANTA FE	/	
FILE	/	✓
U.S.G.S.	2	
LAND OFFICE	/	
OPERATOR	/	

NEW MEXICO OIL CONSERVATION COMMISSION

RECEIVED 30-015-22694

Form C-101
Revised 1-1-65

SEP 18 1978

O. C. C.
ARTESIA, OFFICE

5A. Indicate Type of Lease
STATE FEE

5. State Oil & Gas Lease No.
L 5098

APPLICATION FOR PERMIT TO DRILL, DEEPEN, OR PLUG BACK

1a. Type of Work b. Type of Well DRILL <input checked="" type="checkbox"/> DEEPEN <input type="checkbox"/> PLUG BACK <input type="checkbox"/> OIL WELL <input type="checkbox"/> GAS WELL <input checked="" type="checkbox"/> OTHER <input type="checkbox"/> SINGLE ZONE <input checked="" type="checkbox"/> MULTIPLE ZONE <input type="checkbox"/>			7. Unit Agreement Name
2. Name of Operator Texas Oil & Gas Corp. ✓			8. Farm or Lease Name Indian Hills State Com.
3. Address of Operator 900 Wilco Bldg., Midland, Texas 79701			9. Well No. 2
4. Location of Well UNIT LETTER P LOCATED 660 FEET FROM THE South LINE AND 660 FEET FROM THE East LINE OF SEC. 36 TWP. 20S RGE. 24E NMPM			10. Field and Pool, or Wildcat Had. Cemetery (Morrow)
21. Elevations (Show whether DF, RT, etc.) 3643.1 GR			12. County Eddy
21A. Kind & Status Plug. Bond Blanket renewed & upgraded 1/6/78		19. Proposed Depth 9900'	19A. Formation Morrow
21B. Drilling Contractor Moran Co.		20. Rotary or C.T. Rotary	
22. Approx. Date Work will start September 25, 1978			

PROPOSED CASING AND CEMENT PROGRAM

SIZE OF HOLE	SIZE OF CASING	WEIGHT PER FOOT	SETTING DEPTH	SACKS OF CEMENT	EST. TOP
15"	11 3/4"	42#	400'	350	SURF
11"	8 5/8"	24# & 32#	3000'	850	SURF
7 7/8"	4 1/2"	11.6#	9900'	950	6,000

- Drill 15" hole to 400' w/FW spud mud. Set 11 3/4" csg and cement to surface.
- Drill out with 11" bit using fresh water. Drill to 3,000' - dry drill if necessary. Set 8-5/8" casing and cement to surface.
- Drill out with 7-7/8" bit using fresh water. Drill to 7,000' or top of Wolfcamp with fresh water. Displace hole with 10# brine and drill to 8500'.
- At 8500' or top of Strawn, mud up with salt gel and drispac for 9.8-10.3 ppg wt, 36-45 vis, 5 WL. Drill to TD of 9900'.
- DST & run open hole logs. Run 4 1/2" casing and complete through perforations.

GAS NOT DEDICATED

APPROVAL VALID
FOR 90 DAYS UNLESS
DRILLING COMMENCED,

EXPIRES 12-28-78

NSL-R-5797

IN ABOVE SPACE DESCRIBE PROPOSED PROGRAM: IF PROPOSAL IS TO DEEPEN OR PLUG BACK, GIVE DATA ON PRESENT PRODUCTIVE ZONE AND PROPOSED NEW PRODUCTIVE ZONE. GIVE BLOWOUT PREVENTER PROGRAM, IF ANY.

I hereby certify that the information above is true and complete to the best of my knowledge and belief.

Signed S. P. Baker S. P. Baker, Title District Drilling Engineer Date September 15, 1978

(This space for State Use)

APPROVED BY W. A. Gressett TITLE SUPERVISOR, DISTRICT II DATE SEP 19 1978

CONDITIONS OF APPROVAL, IF ANY:

Cement must be circulated to surface behind 11 3/4" casing

Notify N.M.O.C.C. in sufficient time to witness cementing the 8 5/8" casing

NEW MEXICO OIL CONSERVATION COMMISSION
WELL LOCATION AND ACREAGE DEDICATION PLAT

Form C-102
Supersedes C-128
Effective 1-1-65

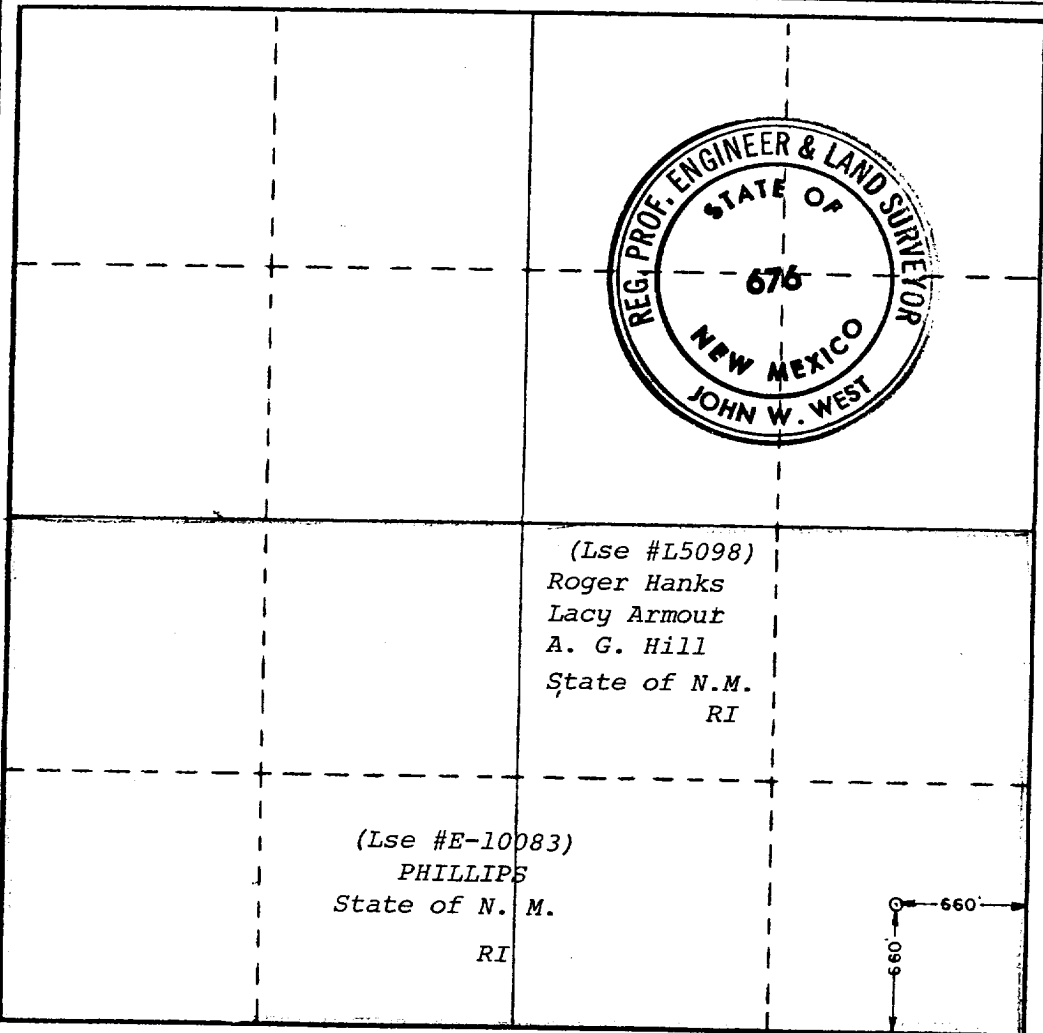
All distances must be from the outer boundaries of the Section.

Operator Texas Oil & Gas Corp.		Lease Indian Hills State Com.			Well No. 2
Unit Letter P	Section 36	Township 20 South	Range 2¹ East	County Eddy	
Actual Footage Location of Well: 660 feet from the South line and 660 feet from the East line					
Ground Level Elev. 3643.1	Producing Formation Morrow		Pool Cemetery Morrow	Dedicated Acreage: 320 Acres	

1. Outline the acreage dedicated to the subject well by colored pencil or hachure marks on the plat below.
2. If more than one lease is dedicated to the well, outline each and identify the ownership thereof (both as to working interest and royalty).
3. If more than one lease of different ownership is dedicated to the well, have the interests of all owners been consolidated by communitization, unitization, force-pooling, etc?
 Yes No If answer is "yes," type of consolidation Communitization

If answer is "no," list the owners and tract descriptions which have actually been consolidated. (Use reverse side of this form if necessary.) _____

No allowable will be assigned to the well until all interests have been consolidated (by communitization, unitization, forced-pooling, or otherwise) or until a non-standard unit, eliminating such interests, has been approved by the Commission. **GAS IS NOT DEDICATED.**



CERTIFICATION

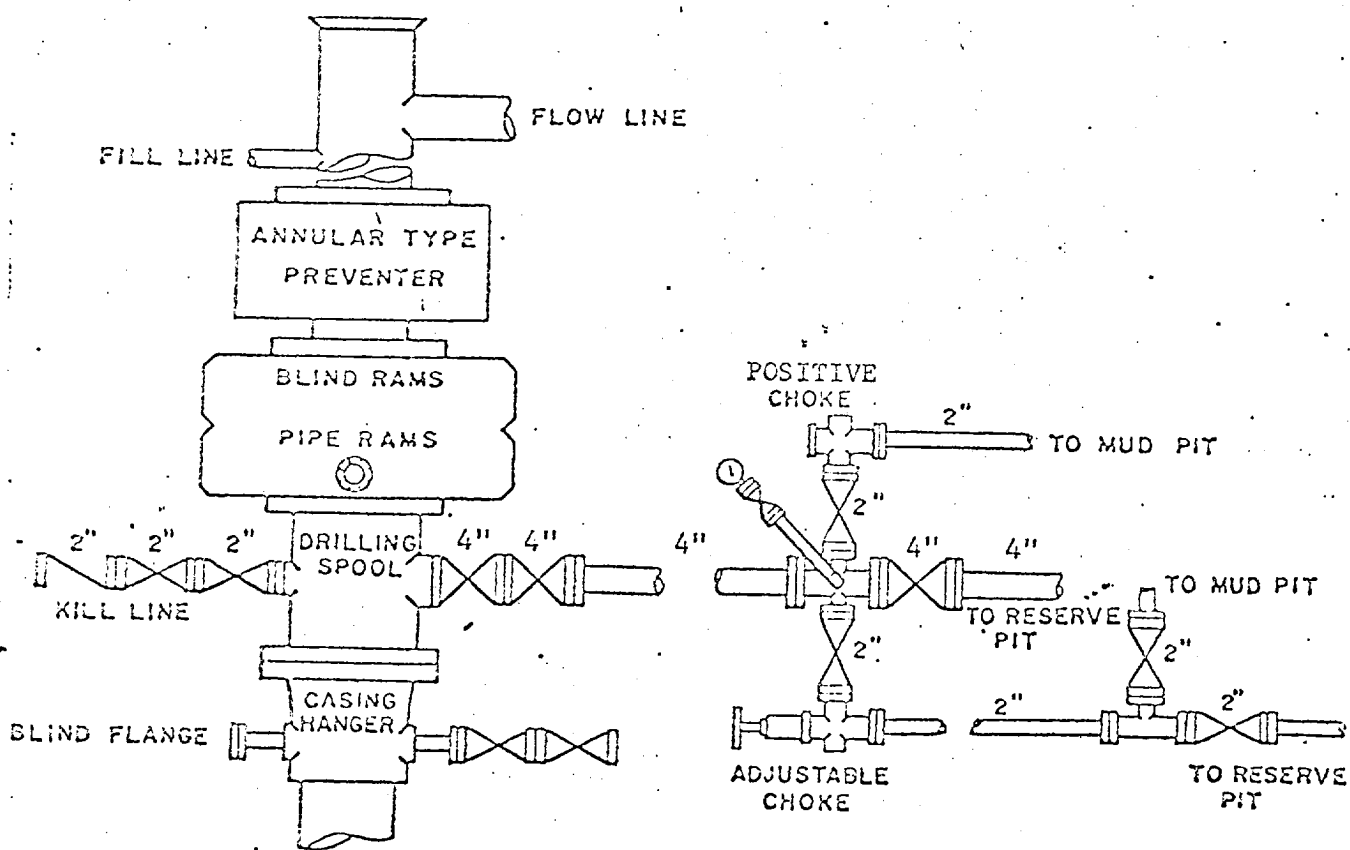
I hereby certify that the information contained herein is true and complete to the best of my knowledge and belief.

S.P. Baker
Name S. P. Baker
Position District Drilling Engineer
Texas Oil & Gas Corp.
Company
Date September 15, 1978

I hereby certify that the well location shown on this plat was plotted from field notes of actual surveys made by me or under my supervision, and that the same is true and correct to the best of my knowledge and belief.

Date Surveyed August 20, 1978
Registered Professional Engineer and/or Land Surveyor
John W. West
Certificate No. John W. West 676
Ronald J. Eidson 3239

3000 lb. WP BOP
 12" Shaffer Type B Hydraulic BOP 3000 PSI
 10" GK Hydrill 3000 WP
 80 Gallon - 5 Station Koomey Accumulator
 3000 lb. WP Choke Manifold



BLOWOUT PREVENTOR SKETCH
 Indian Hills State Com # 2
 Eddy County, N. M.