

Submit to Appropriate
District Office
State Lease - 4 copies
Fee Lease - 3 copies

State of New Mexico
Energy, Minerals and Natural Resources Department

Form C-102
Revised 1-1-89

OIL CONSERVATION DIVISION

DISTRICT I
P.O. Box 1980, Hobbs, NM 88240

P.O. Box 2088

Santa Fe, New Mexico 87504-2088

DISTRICT II
P.O. Drawer DD, Artesia, NM 88210

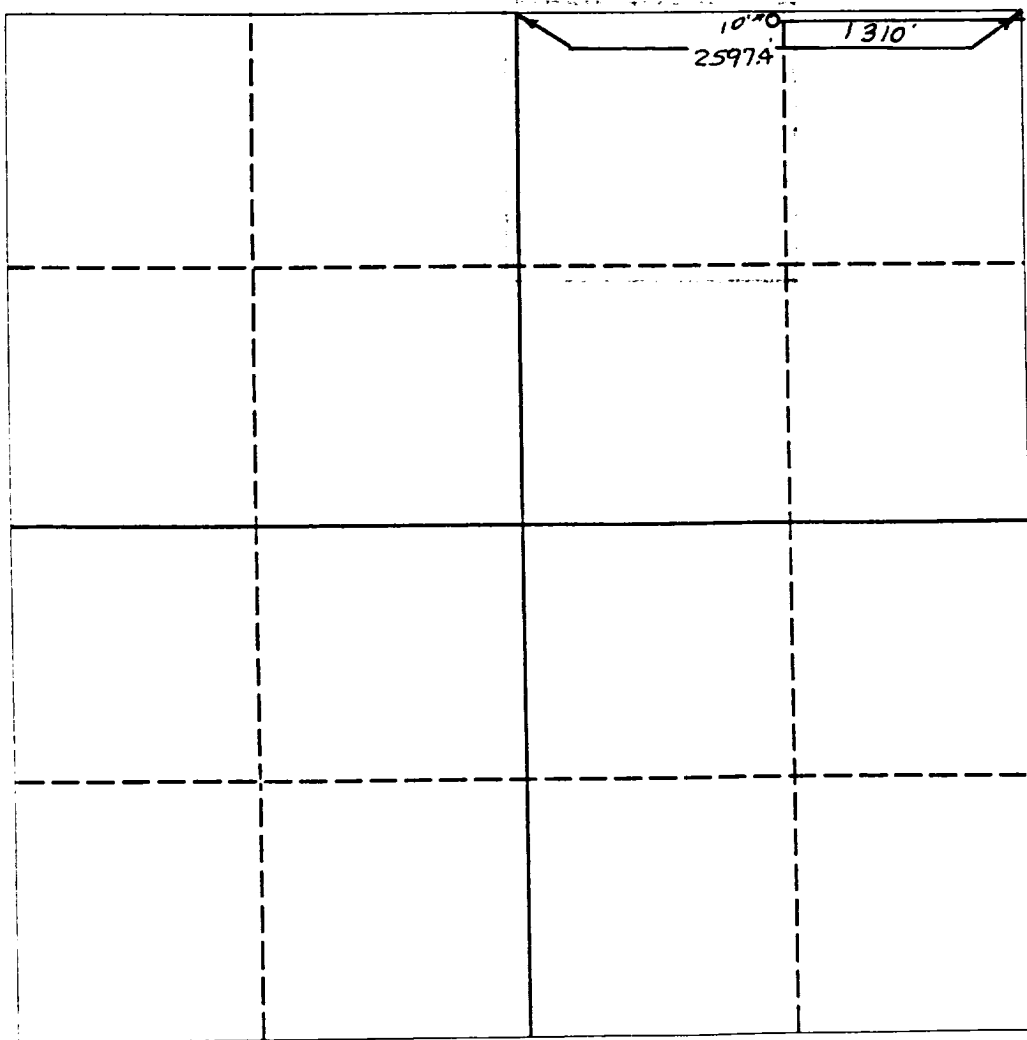
WELL LOCATION AND ACREAGE DEDICATION PLAT

All Distances must be from the outer boundaries of the section

DISTRICT III
1000 Rio Brazos Rd., Aztec, NM 87410

Operator SDX RESOURCES, INC.		Lease EAST MILLMAN UNIT		Well No. 203
Unit Letter B	Section 22	Township 19 SOUTH	Range 28 EAST	County EDDY COUNTY, NM
Actual Footage Location of Well: 10 feet from the NORTH line and 1310 feet from the EAST line				
Ground level Elev. 3423.	Producing Formation Q-Gb.-SA.	Pool East Millman Q.-Gb.-SA.	Dedicated Acreage: 40 Acres	

- Outline the acreage dedicated to the subject well by colored pencil or hachure marks on the plat below.
- If more than one lease is dedicated to the well, outline each and identify the ownership thereof (both as to working interest and royalty).
- If more than one lease of different ownership is dedicated to the well, have the interest of all owners been consolidated by communitization, unitization, force-pooling, etc.?
 Yes No If answer is "yes" type of consolidation _____
 If answer is "no" list the owners and tract descriptions which have actually been consolidated. (Use reverse side of this form if necessary.) _____
 No allowable will be assigned to the well until all interests have been consolidated (by communitization, unitization, forced-pooling, or otherwise) or until a non-standard unit, eliminating such interest, has been approved by the Division.



OPERATOR CERTIFICATION
I hereby certify that the information contained herein is true and complete to the best of my knowledge and belief.

Signature: *Chuck Morgan*
 Printed Name: **Chuck Morgan**
 Position: **Engr.**
 Company: **SDX Resources**
 Date: **3/7/93**

SURVEYOR CERTIFICATION
I hereby certify that the well location shown on this plat was plotted from field notes of actual surveys made by me or under my supervision, and that the same is true and correct to the best of my knowledge and belief.

Date Surveyed: **FEBRUARY 26, 1993**
 Signature & Seal of Professional Surveyor: *[Signature]*
 Certificate No. **5412**
 NEW MEXICO
 REGISTERED PROFESSIONAL SURVEYOR
 NM RE&PS NO. 105412