

UNITED STATES
DEPARTMENT OF THE INTERIOR
BUREAU OF LAND MANAGEMENT

APPLICATION FOR PERMIT TO DRILL, DEEPEN, OR PLUG BACK

1a. TYPE OF WORK

DRILL ☐

DEEPEN ☒

PLUG BACK ☐

b. TYPE OF WELL

OIL
WELL ☒

GAS
WELL ☐

OTHER

SINGLE
ZONE ☒

MULTIPLE
ZONE ☐

2. NAME OF OPERATOR

Collier Petroleum Corp.

3. ADDRESS OF OPERATOR

P. O. Box 3531, Midland, Texas 79702

4. LOCATION OF WELL (Report location clearly and in accordance with any State requirements.)*

At surface

Unit M, 996' FSL 330' FWL, Sec. 13, T-20-S, R-28-E

At proposed prod. zone

Same

14. DISTANCE IN MILES AND DIRECTION FROM NEAREST TOWN OR POST OFFICE*

8 mi NE Carlsbad

15. DISTANCE FROM PROPOSED*

LOCATION TO NEAREST
PROPERTY OR LEASE LINE, FT.
(Also to nearest drlg. unit line, if any)

990'

16. NO. OF ACRES IN LEASE

640

17. NO. OF ACRES ASSIGNED

TO THIS WELL

40

18. DISTANCE FROM PROPOSED LOCATION*
TO NEAREST WELL, DRILLING, COMPLETED,
OR APPLIED FOR, ON THIS LEASE, FT.

495'

19. PROPOSED DEPTH

1100'

20. ROTARY OR CABLE TOOLS

Rotary or Reverse

21. ELEVATIONS (Show whether DF, RT, GR, etc.)

GL 3241'

22. APPROX. DATE WORK WILL START*

November 1, 1987

23.

PROPOSED CASING AND CEMENTING PROGRAM

SIZE OF HOLE	SIZE OF CASING	WEIGHT PER FOOT	SETTING DEPTH	QUANTITY OF CEMENT
8-3/4"	* 7"	17#	681'	125 sx, circulate to surface
6 1/8"	4-1/2"	10.5 or 11.6	1100'	Cement to surface
	SJS			

This well is currently an open hole Yates producer from 796-811' and was originally drilled in 1946. We propose to re-enter this well and deepen from 811' to 1100' to test the Seven Rivers formation. The existing casing will be left in the hole, and new 4-1/2" casing will be run to TD and cemented to surface. The Seven Rivers formation will then be selectively perforated and CO2 foam fraced. If no productive zones are present in the Seven Rivers, this well will be completed as a Yates producer, following the same stimulation procedure.

* Casing already present in wellbore.

IN ABOVE SPACE DESCRIBE PROPOSED PROGRAM: If proposal is to deepen or plug back, give data on present productive zone and proposed new productive zone. If proposal is to drill or deepen directionally, give pertinent data on subsurface locations and measurements and true vertical depths. Give blowout preventer program, if any.

24.

SIGNED

Amy L. Whitley

TITLE

Agent

(This space for Federal or State office use)

PERMIT NO.

APPROVAL DATE

APPROVED BY

TITLE

DATE

11-5-87

CONDITIONS OF APPROVAL, IF ANY:

*See Instructions On Reverse Side

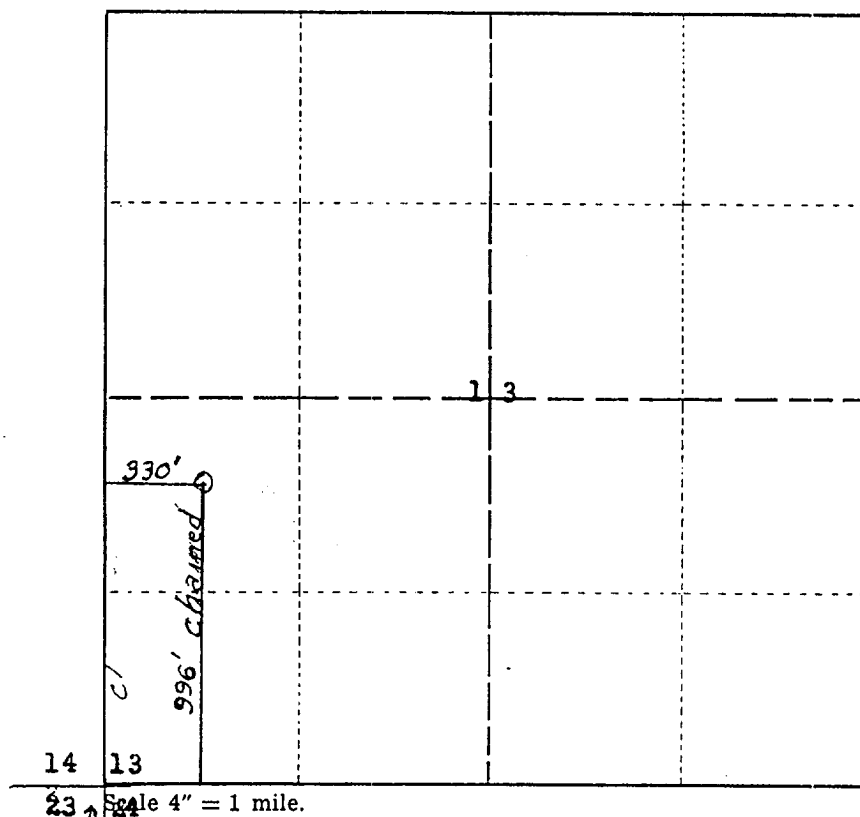
Company COLLIER PETROLEUM CORP.

Lease Wills Well No. 16

Sec. 13 T. 20 S., R. 28 E., N.M.P.M.

Location 996 S line & 330 W. line of Section

County Eddy New Mexico



U.S.G.O.S.

This is to certify that the above plat was prepared from field notes of actual surveys made by me or under my supervision and that the same are true and correct to the best of my knowledge and belief.

Seal:
Artesia, New Mexico

Neil H. Wills
Registered Professional
Engineer and Land Surveyor

Surveyed July 17, 1946, 19

14256-14307 Advocate Print

Survey Made for Neil H. Wills
Carlsbad, New Mexico

