

NEW MEXICO OIL CONSERVATION COMMISSION
WELL LOCATION AND ACREAGE DEDICATION PLAT

FORM C-120
Revised 5/1/57

SEE INSTRUCTIONS FOR COMPLETING THIS FORM ON THE REVERSE SIDE

SECTION A

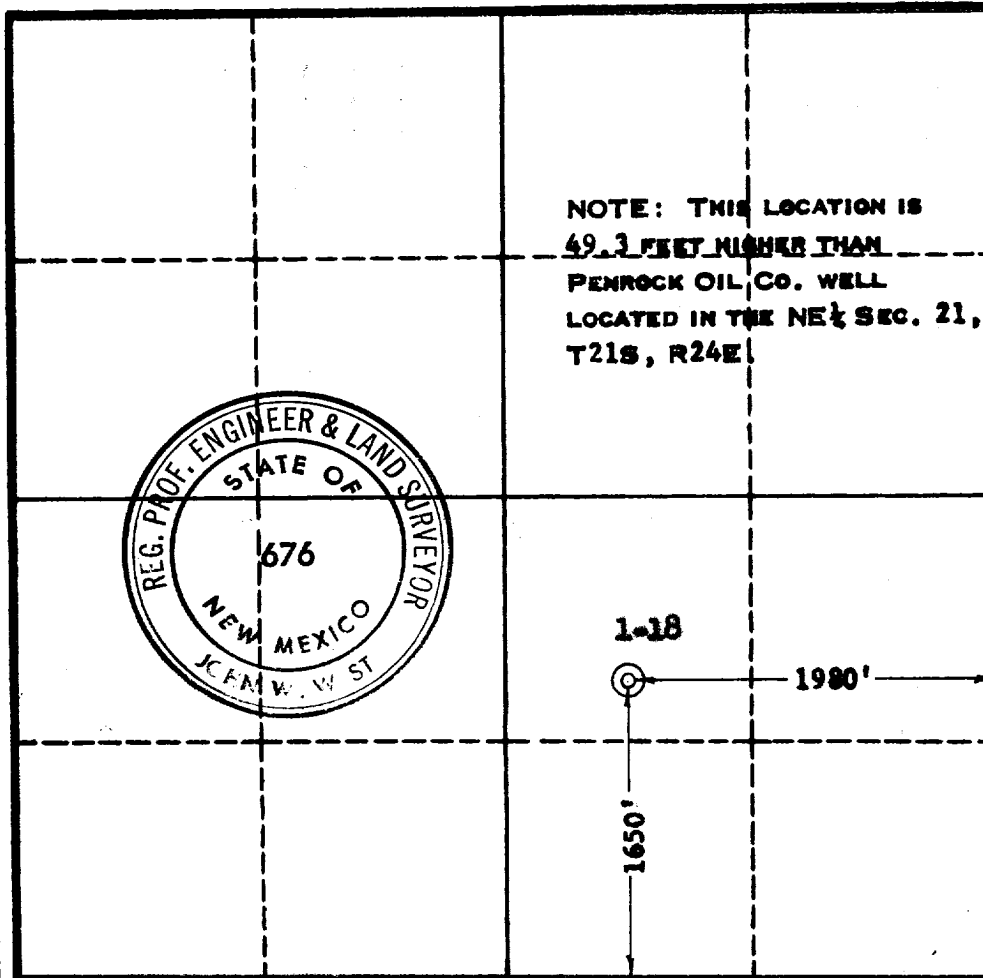
Operator UNION OIL COMPANY OF CALIFORNIA		Lease STATE		Well No. 1-18
Unit Letter J	Section 18	Township 21 SOUTH	Range 24 EAST	County EDDY
Actual Footage Location of Well: 1980 feet from the EAST line and 1650 feet from the SOUTH line				
Ground Level Elev. Unknown	Producing Formation Upper Penn. or Morrow	Pool Undersig. Indian Hills Upper Penn. Gas or Wildcat	Dedicated Acreage: 640 Acres	

1. Is the Operator the only owner in the dedicated acreage outlined on the plat below? YES _____ NO **X**. ("Owner" means the person who has the right to drill into and to produce from any pool and to appropriate the production either for himself or for himself and another. (65-3-29 (e) NMSA 1935 Comp.)
2. If the answer to question one is "no," have the interests of all the owners been consolidated by communitization agreement or otherwise? YES **X** NO _____. If answer is "yes," Type of Consolidation **Unit operating Agreement**
3. If the answer to question two is "no," list all the owners and their respective interests below:

Owner	Land Description

RECEIVED
JAN 27 1964
D. C. C.
CERTIFICATION, OFFICE

SECTION B



I hereby certify that the information in SECTION A above is true and complete to the best of my knowledge and belief.

Name <u>C. J. Dizon</u>
Position Production Clerk
Company Union Oil Company of Calif.
Date January 22, 1964

I hereby certify that the well location shown on the plat in SECTION B was plotted from field notes of actual surveys made by me or under my supervision, and that the same is true and correct to the best of my knowledge and belief.

Date Surveyed 1-8-1964
Registered Professional Engineer and/or Land Surveyor, JOHN W. WEST
Certificate No. N. M. - P. E. & L. S. NO. 676

OIL CONSERVATION COMMISSION		
ARIZONA DISTRICT OFFICE		
No. Copies Required		3
DISTRIBUTION		
	COPIES	REMARKS
OPERATOR		
LAND OFFICE		
PRODUCTION OFFICE	1	
STATE LAND OFFICE		
GEOL. B.		
PROD. B.	1	
SEC.		
ASST. SEC.	1	
TOTAL	2	