

NEW MEXICO OIL CONSERVATION COMMISSION
WELL LOCATION AND ACREAGE DEDICATION PLAT

Copy 6.57
Form C-102
Supersedes C-128
Effective 1-4-65

All distances must be from the outer boundaries of the Section.

Operator MEADCO PROPERTIES, LTD.		Lease HARRIS-BELL		Well No. 1
Unit Letter H	Section 5	Township 21 SOUTH	Range 29 EAST	County EDDY
Actual Footage Location of Well: 1980 feet from the NORTH line and 660 feet from the EAST line				
Ground Level Elev. 3459.0	Producing Formation Pennsylvanian	Pool Golden Lane Morrow (Gas)	Dedicated Acreage: 311.16 320 Acres	

1. Outline the acreage dedicated to the subject well by colored pencil or hatchure marks on the plat below.
2. If more than one lease is dedicated to the well, outline each and identify the ownership thereof (both as to working interest and royalty).
3. If more than one lease of different ownership is dedicated to the well, have the interests of all owners been consolidated by communitization, unitization, force-pooling, etc?

RECEIVED

JUN 20 1975

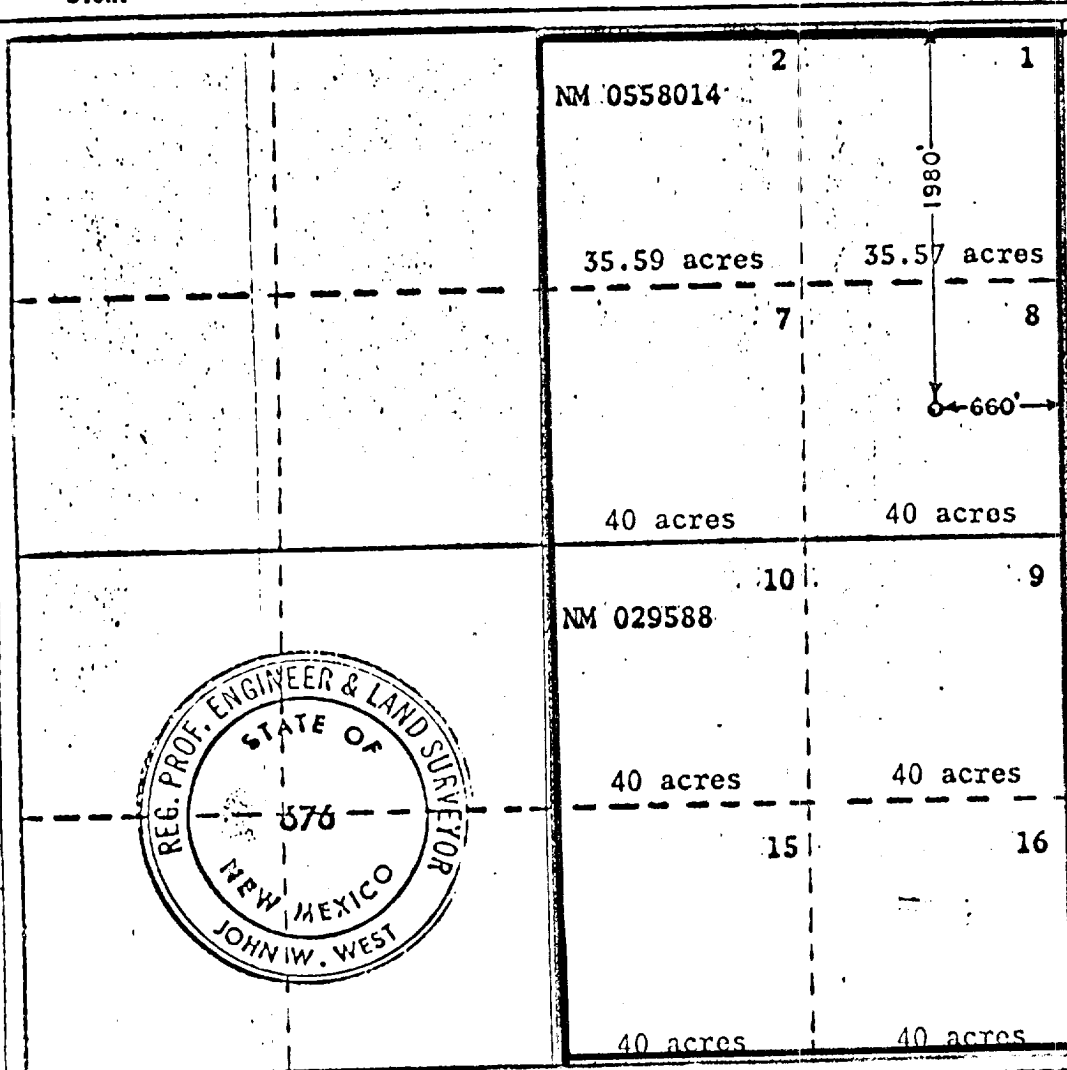
D. C. C.

ARTESIA, OFFICE

☒ Yes ☐ No If answer is "yes," type of consolidation Communitization papers being circulated at this time.

If answer is "no," list the owners and tract descriptions which have actually been consolidated. (Use reverse side of this form if necessary.)

No allowable will be assigned to the well until all interests have been consolidated (by communitization, unitization, forced-pooling, or otherwise) or until a non-standard unit, eliminating such interests, has been approved by the Commission.



CERTIFICATION

Bill C. Cotner
I hereby certify that the information contained herein is true and complete to the best of my knowledge and belief.

Bill C. Cotner

Name

Bill C. Cotner

Position

Owner

Company

Meadco Properties, Ltd.

Date

6/19/75

I hereby certify that the well location shown on this plat was plotted from field notes of actual surveys made by me or under my supervision, and that the same is true and correct to the best of my knowledge and belief.

Date Surveyed

NOVEMBER 2, 1972

Registered Professional Engineer and/or Land Surveyor

John W. West

Certificate No. 676