

NEW MEXICO OIL CONSERVATION COMMISSION
WELL LOCATION AND ACREAGE DEDICATION PLAT

Form C-102
Supersedes C-128
Effective 1-1-65

All distances must be from the outer boundaries of the Section

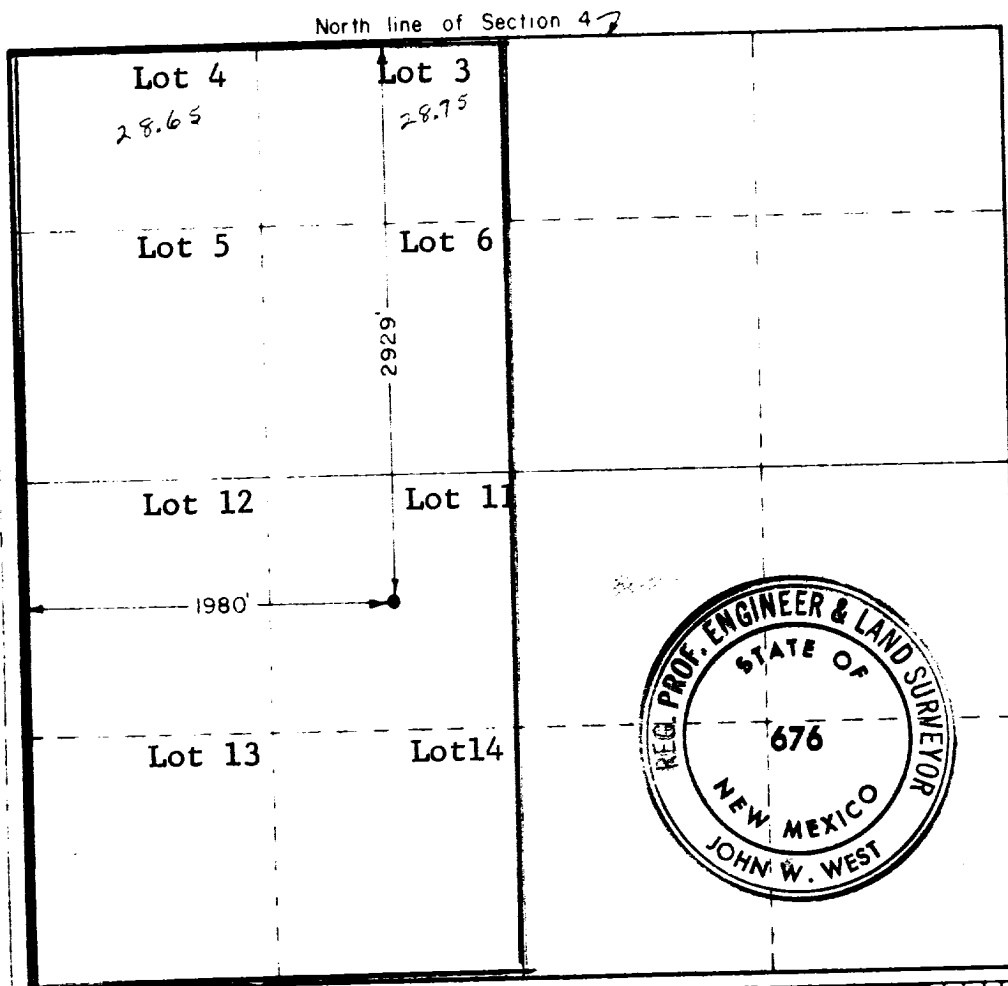
Operator MORRIS R. ANTWEIL			Lessee WESTERN RESERVES FEDERAL		Well No. 1
Tract Letter K	Section 4	Township 21 SOUTH	Range 26 EAST	County EDDY	
Actual distance from the well 1980 feet from the WEST line and 2929 feet from the NORTH line					
Ground level 3208.4	Producing Formation Morrow	Pool Undesignated	Dedicated Acreage 297.4		

- Outline the acreage dedicated to the subject well by colored pencil or hatchure marks on the plat below.
- If more than one lease is dedicated to the well, outline each and identify the ownership thereof (both as to working interest and royalty) **See Reverse Side**
- If more than one lease of different ownership is dedicated to the well, have the interests of all owners been consolidated by communitization, unitization, force-pooling, etc?

☐ Yes ☒ No If answer is "yes," type of consolidation _____

If answer is "no," list the owners and tract descriptions which have actually been consolidated (Use reverse side of this form if necessary.) proration unit to be communitized

No allowable will be assigned to the well until all interests have been consolidated (by communitization, unitization, forced-pooling, or otherwise) or until a non-standard unit, eliminating such interests, has been approved by the Commission.



CERTIFICATION

I hereby certify that the information contained herein is true and complete to the best of my knowledge and belief

R. M. Williams

R. M. Williams

Agent

Morris R. Antweil

5 April 1974

RECEIVED
APR 5 1974
U.S. GEOLOGICAL SURVEY
ARTESIA, NEW MEXICO

I hereby certify that the location shown on this plat was plotted in the field notes of a geological survey made by me or under my supervision, and that the same is true and correct to the best of my knowledge and belief

Date Surveyed

MARCH 29, 1974

Registered Professional Engineer and/or Land Surveyor

John W. West
Certificate No. **676**

Tabulation of Leases

Lots 3, 4, 5, & 6 - Federal Lease NM 911

Lots 11 & 14 - Federal Lease NM 0514349

Lots 12 & 13 - Federal Lease NM 0554204

All Working Interests:

Morris H. Antweil 50%

Western Reserves Oil Co. 50%

All Royalty Interests:

Federal 1/8