

RECEIVED

NEW MEXICO OIL CONSERVATION COMMISSION
WELL LOCATION AND ACREAGE DEDICATION PLAT

Form C-102
Supersedes C-128
Effective 1-1-65

SEP 12 '89

All distances must be from the outer boundaries of the Section

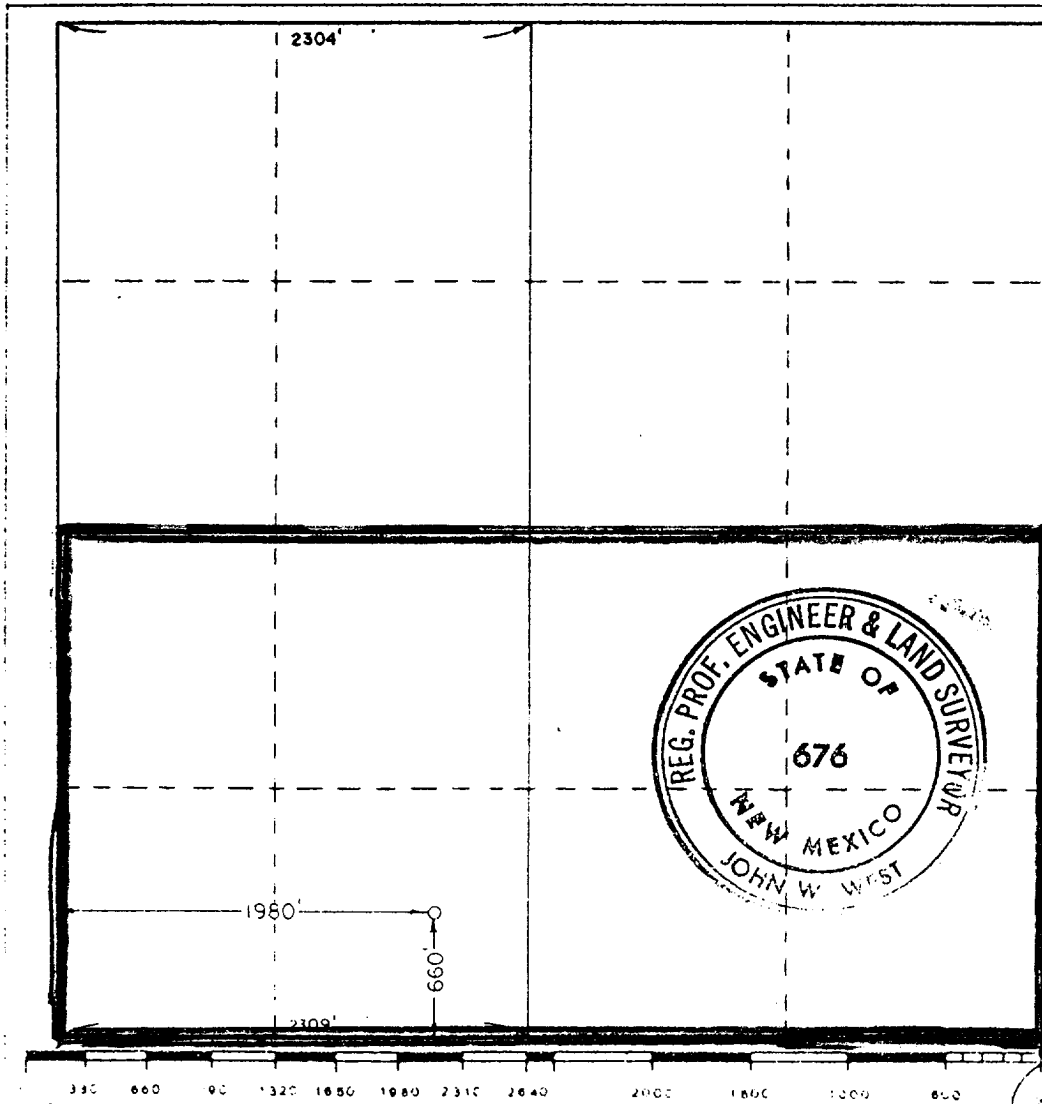
Operator The Petroleum Corp.			Lease Superior Federal			C. C. D. Well No. ARTESIA, OFFICE 6		
Grid Letter N	Section 6	Township 20 South	Range 29 East	County Eddy				
Actual Footage Location of Well: 660 feet from the South line and 1980 feet from the West line								
Ground Level Elev. 3283.9	Producing Formation Atoka		Pool East Burton Flat (Atoka)			Dedicated Acreage: 300 Acres		

1. Outline the acreage dedicated to the subject well by colored pencil or hatchure marks on the plat below.
2. If more than one lease is dedicated to the well, outline each and identify the ownership thereof (both as to working interest and royalty).
3. If more than one lease of different ownership is dedicated to the well, have the interests of all owners been consolidated by communitization, unitization, force-pooling, etc?

☐ Yes ☐ No If answer is "yes," type of consolidation _____

If answer is "no," list the owners and tract descriptions which have actually been consolidated. (Use reverse side of this form if necessary.) _____

No allowable will be assigned to the well until all interests have been consolidated (by communitization, unitization, forced-pooling, or otherwise) or until a non-standard unit, eliminating such interests, has been approved by the Commission.



CERTIFICATION

I hereby certify that the information contained herein is true and complete to the best of my knowledge and belief.

L. E. Thomas

Name

L. E. Thomas

Position

Manager of Operations

Company

The Petroleum Corp.

Date

October 15, 1981

I hereby certify that the well location shown on this plat was plotted from field notes of actual surveys made by me or under my supervision, and that the same is true and correct to the best of my knowledge and belief.

Date Surveyed

10-10-81

Registered Professional Engineer
and/or Land Surveyor

John W. West

Certificate No. **JOHN W. WEST 676**
PATRICK A. ROMERO 6663
Ronald J. Eidson 3239