

UNITED STATES
DEPARTMENT OF THE INTERIOR
GEOLOGICAL SURVEY

4/5F

30-05-20-80

5. LEASE DESIGNATION AND SERIAL NO. NM-08277	
6. IF INDIAN ALLOTTEE OR TRIBE NAME	
7. UNIT AGREEMENT NAME Saladar Unit	
8. FARM OR LEASE NAME	
9. WELL NO. 13	
10. FIELD AND POOL, OR WILDCAT Saladar Yates	
11. SEC., T., R., M., OR BLK. AND SURVEY OR AREA Sec. 33, T20S, R28E	
12. COUNTY OR PARISH Eddy	13. STATE NM

APPLICATION FOR PERMIT TO DRILL, DEEPEN, OR PLUG BACK

1a. TYPE OF WORK
DRILL ☒ DEEPEN ☐ PLUG BACK ☐

b. TYPE OF WELL
OIL WELL ☒ GAS WELL ☐ OTHER ☐
SINGLE ZONE ☒ MULTIPLE ZONE ☐

2. NAME OF OPERATOR
Barber Oil, Inc.

3. ADDRESS OF OPERATOR
P. O. Box 1658 Carlsbad, NM 88220

4. LOCATION OF WELL (Report location clearly and in accordance with any State requirements.)
At surface: 1315' FSL and 1980' FWL
At proposed prod. zone: Same

5. DISTANCE IN MILES AND DIRECTION FROM NEAREST TOWN OR POST OFFICE*
7 miles NNE of Carlsbad, NM

6. DISTANCE FROM PROPOSED*
ADJ. TO NEAREST PROPERTY OR LEASE LINE, FT.
ADJ. TO NEAREST DRIG. UNIT LINE, IF ANY
1315'

7. DISTANCE FROM PROPOSED LOCATION*
TO NEAREST WELL DRILLING, COMPLETED, OR APPLIED FOR, ON THIS LEASE, FT.
330'

8. ELEVATIONS (Show whether DF, RT, GR, etc.)
3196' GR

9. NO. OF ACRES IN LEASE
280

10. PROPOSED DEPTH
650'

11. NO. OF ACRES ASSIGNED TO THIS WELL
280

12. ROTARY OR CABLE TOOLS
Rotary Rig

13. APPROX. DATE WORK WILL START*
As soon as possible

PROPOSED CASING AND CEMENTING PROGRAM

SIZE OF HOLE	SIZE OF CASING	WEIGHT PER FOOT	SETTING DEPTH	QUANTITY OF CEMENT
6 1/2"	4 1/2" OD	11.60#	650'	circulated to surface if possible

Mud Program: NONE

BOP Program: NONE

RECEIVED
MAY 12 1982

OIL & GAS
U.S. GEOLOGICAL SURVEY
ROSWELL, NEW MEXICO

Posted ID-1
7-9-82
New loc. & API

14. ABOVE SPACE DESCRIBE PROPOSED PROGRAM: If proposal is to deepen or plug back, give data on present productive zone and proposed new productive zone. If proposal is to drill or deepen directionally, give pertinent data on subsurface locations and measured and true vertical depths. Give blowout prevention program, if any.

24

SIGNED (This space for Federal or State office use) APPROVED GEORGE H. STEWART	TITLE President	DATE 4-10-82
PERMIT NO. JUN 28 1982	APPROVAL DATE	
APPROVED BY CONDITIONS OF APPROVAL, IF ANY JAMES A. CILHAMIA DISTRICT SUPERVISOR	TITLE NSL-1534 app. 6-15-82	DATE

*See Instructions On Reverse Side

OIL CONSERVATION DIVISION

STATE OF NEW MEXICO
ENERGY AND MINERALS DEPARTMENTP. O. BOX 2088
SANTA FE, NEW MEXICO 87501Form C-102
Revised 10-1-78

All distances must be from the outer boundaries of the Section.

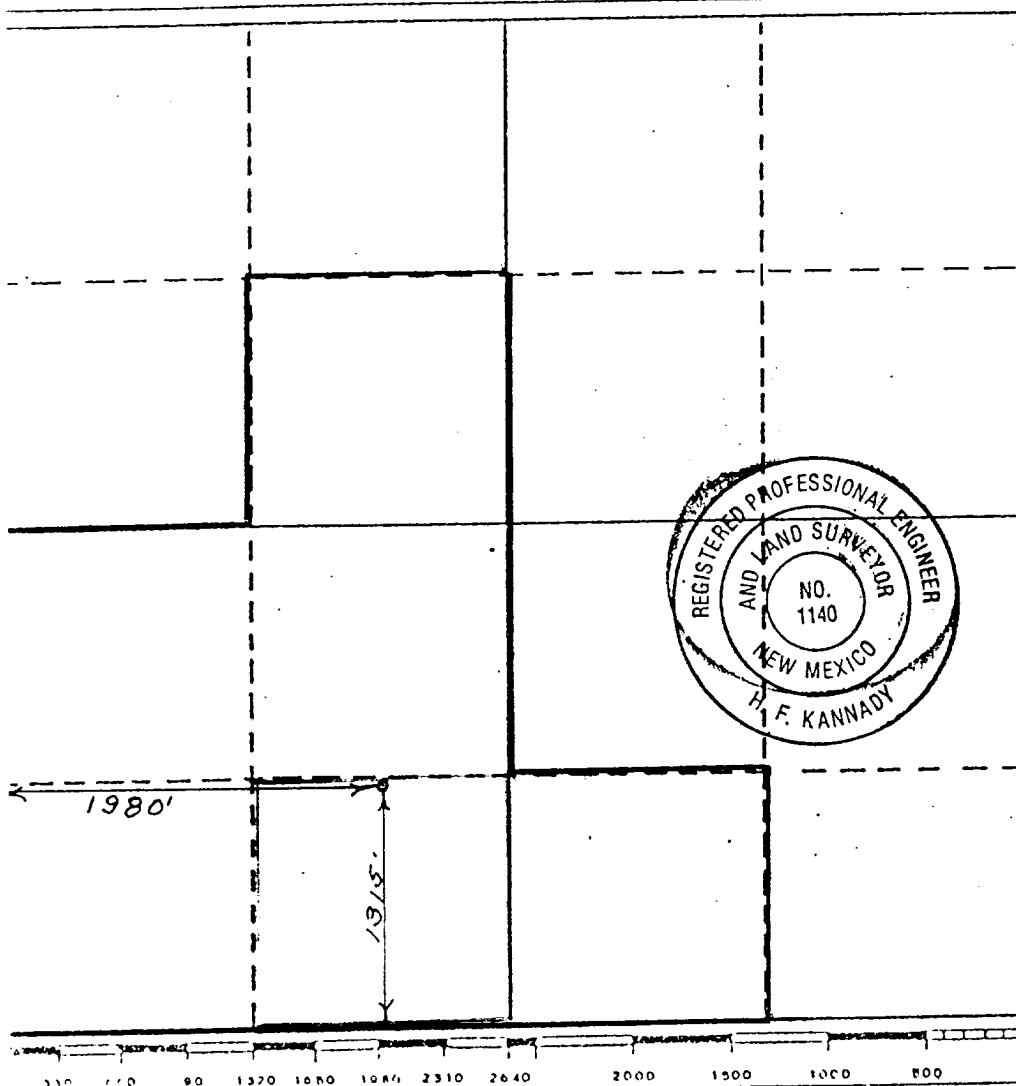
Operator Barber Oil, Inc.			Lease Saladar Unit 91-016916			Well No. 13		
Section Letter N	Section 33	Township 20 South	Range 28 East	County Eddy				
Actual Footage Location of Well: 1315 feet from the South line and 1980 feet from the West line								
Ground Level Elev. 3196'	Producing Formation Yates Sand		Pool Saladar - 70%			Dedicated Acreage: 280 Acres		

1. Outline the acreage dedicated to the subject well by colored pencil or hachure marks on the plat below.
2. If more than one lease is dedicated to the well, outline each and identify the ownership thereof (both as to working interest and royalty).
3. If more than one lease of different ownership is dedicated to the well, have the interests of all owners been consolidated by communitization, unitization, force-pooling, etc?

☒ Yes ☐ No If answer is "yes," type of consolidation Unit # 14-08-0001-16916

If answer is "no," list the owners and tract descriptions which have actually been consolidated. (Use reverse side of this form if necessary.)

No allowable will be assigned to the well until all interests have been consolidated (by communitization, unitization, forced-pooling, or otherwise) or until a non-standard unit, eliminating such interests, has been approved by the Division.



CERTIFICATION

I hereby certify that the information contained herein is true and complete to the best of my knowledge and belief.

Name [Signature]
Position
President
Company
Barber Oil, Inc.
Date
4-10-82

I hereby certify that the well location shown on this plat was plotted from field notes of actual surveys made by me or under my supervision, and that the same is true and correct to the best of my knowledge and belief.

Date Surveyed
May 7, 1982
Registered Professional Engineer
and/or Land Surveyor

H. F. Kannady
Certificate No.
1140

BARBER OIL, INC.
111 West Mermod
Post Office Box 1658
CARLSBAD, NEW MEXICO 88220
(505) 887-2566

APPLICATION FOR DRILLING

In conjunction with Form 9-331-C, Application for Permit to Drill subject well, Barber Oil, Inc. submits the following ten items of pertinent information in accordance with USGS requirements:

1. The geologic surface formation is Permian.
2. The estimated tops of geologic markers are as follows:

	Surface
Fletcher	440'
Tansill	460'
Ocotillo	505'
Yates	605'

3. The estimated depths at which anticipated water, oil or gas formations are expected to be encountered:

Water: Approximately 65 feet
Oil : Yates - approximately 640' to 665'

4. Proposed Casing Program: 4½"OD, 11.6# casing at TD
5. Pressure Control Equipment: NONE
6. Mud Program: NONE
7. Auxiliary Equipment: NONE
8. Testing, Logging and Coring Programs:
Drill Stem tests - NONE

Logging: Logging Unit from 600' to TD
Electronic Log Program: Gamma Ray-Neutron Log
9. No abnormal pressures or temperatures are anticipated.
10. Anticipated starting date: As soon as possible.

