

UNITED STATES
 DEPARTMENT OF THE INTERIOR
 GEOLOGICAL SURVEY

SW
 OX CANYON
 RANCH

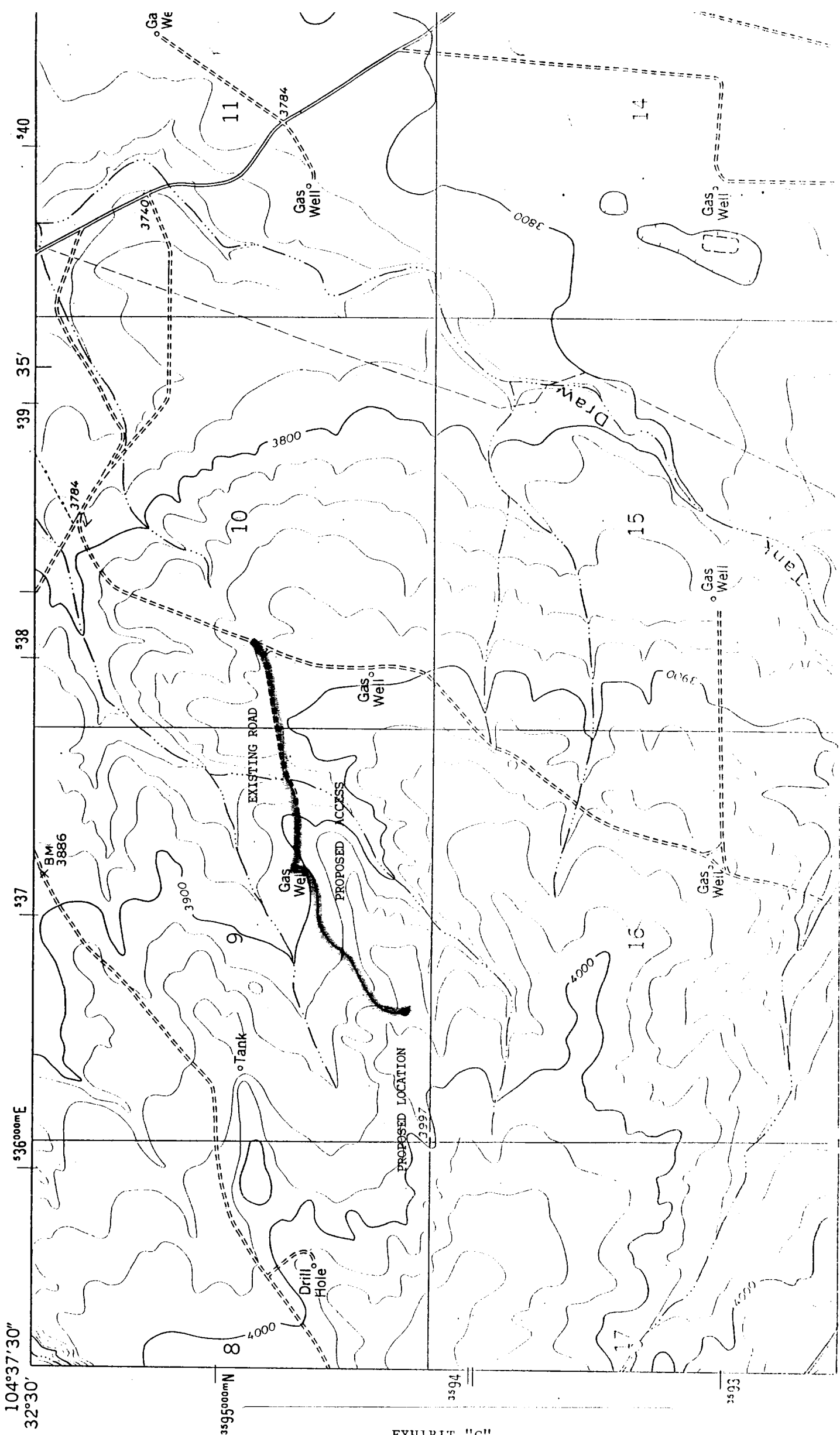


EXHIBIT "C"
 N. INDIAN BASIN U #8
 PROPOSED LOCATION WITH EXISTING
 LEASE ROADS AND PROPOSED ACCESS ROAD