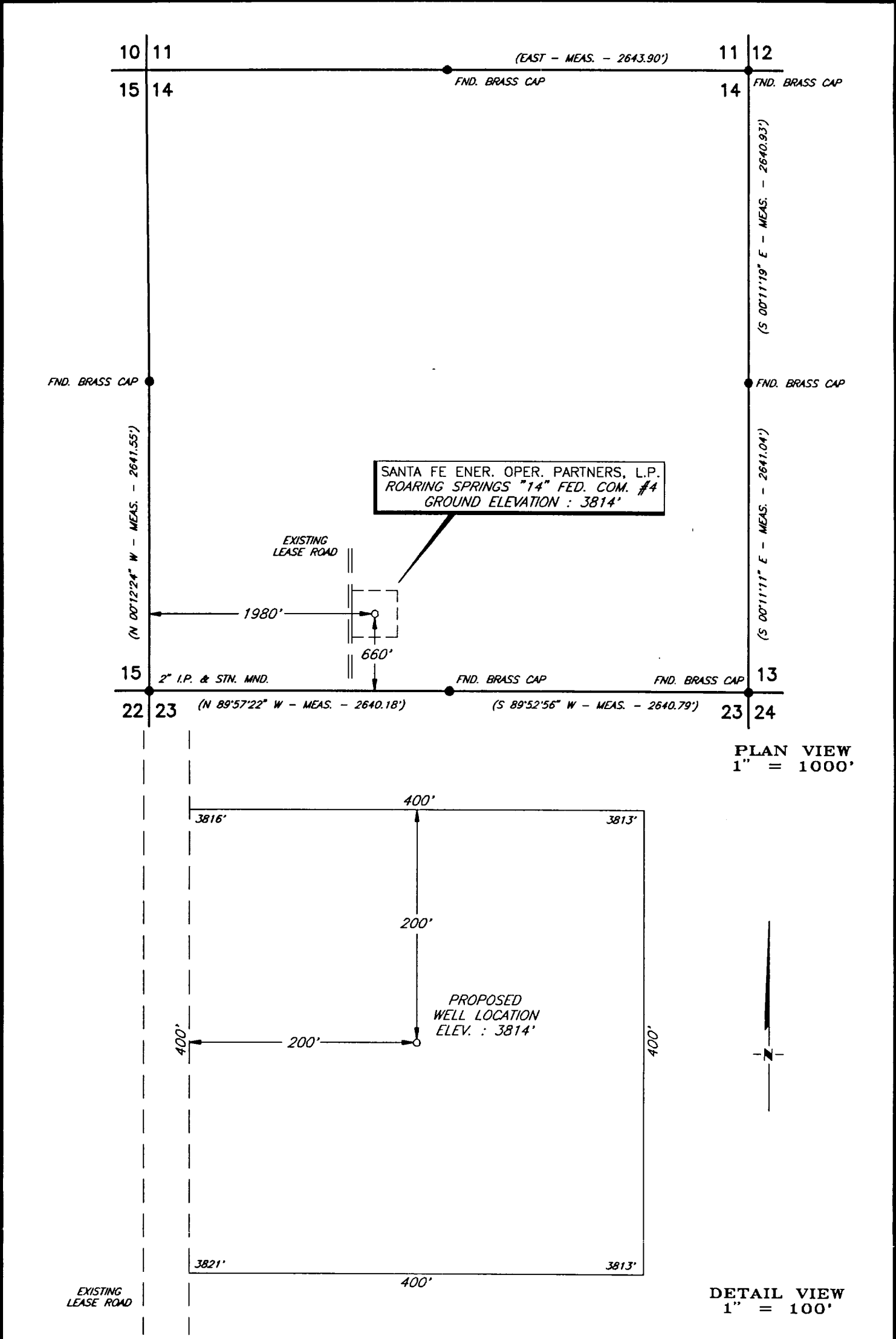


PLAT SHOWING PROPOSED
WELL LOCATION AND LEASE ROAD IN
SECTION 14, T-21-S, R-23-E, N.M.P.M.
EDDY COUNTY, NEW MEXICO



				SANTA FE ENER. OPER. PARTNERS, L.P. <i>MIDLAND, TEXAS</i>		SCALE: AS SHOWN	
						DATE: OCT. 24, 1994	
NO.	REVISION	DATE	BY	SURVEYING AND MAPPING BY TOPOGRAPHIC LAND SURVEYORS <i>MIDLAND, TEXAS</i>		JOB NO.: 36114-F	
SURVEYED BY: B.B.						51 NE	
DRAWN BY: C.L.S.							
APPROVED BY: V.L.B.							
						SHEET : 1 OF 1	