

DISTRICT I
P. O. Box 1980
Hobbs, NM 88241-1980

DISTRICT II
P. O. Drawer DD
Artesia, NM 88211-0719

DISTRICT III
1000 Rio Brazos Rd.
Aztec, NM 87410

DISTRICT IV
P. O. Box 2088
Santa Fe, NM 87507-2088

State of New Mexico
Energy, Minerals, and Natural Resources Department

OIL CONSERVATION DIVISION
P. O. Box 2088
Santa Fe, New Mexico 87504-2088

Form C-102
Revised 02-10-94

Instructions on back

Submit to the Appropriate
District Office
State Lease - 4 copies
Fee Lease - 3 copies

☐ AMENDED REPORT

WELL LOCATION AND ACREAGE DEDICATION PLAT

| | | | | | | |
|------------------------------|--|--|--|---|----------------------|--|
| 1 API Number 30-015-30487 | | 2 Pool Code 33685 | | 3 Pool Name Indian Basin (Upper Penn) Assoc. | | |
| 4 Property Code 017286 | | 5 Property Name JONES CANYON '4' FEDERAL | | | 6 Well Number 4 | |
| 7 OGRID No. 020305 | | 8 Operator Name SANTA FE ENERGY RESOURCES, INC. | | | 9 Elevation 4146' | |

10 SURFACE LOCATION

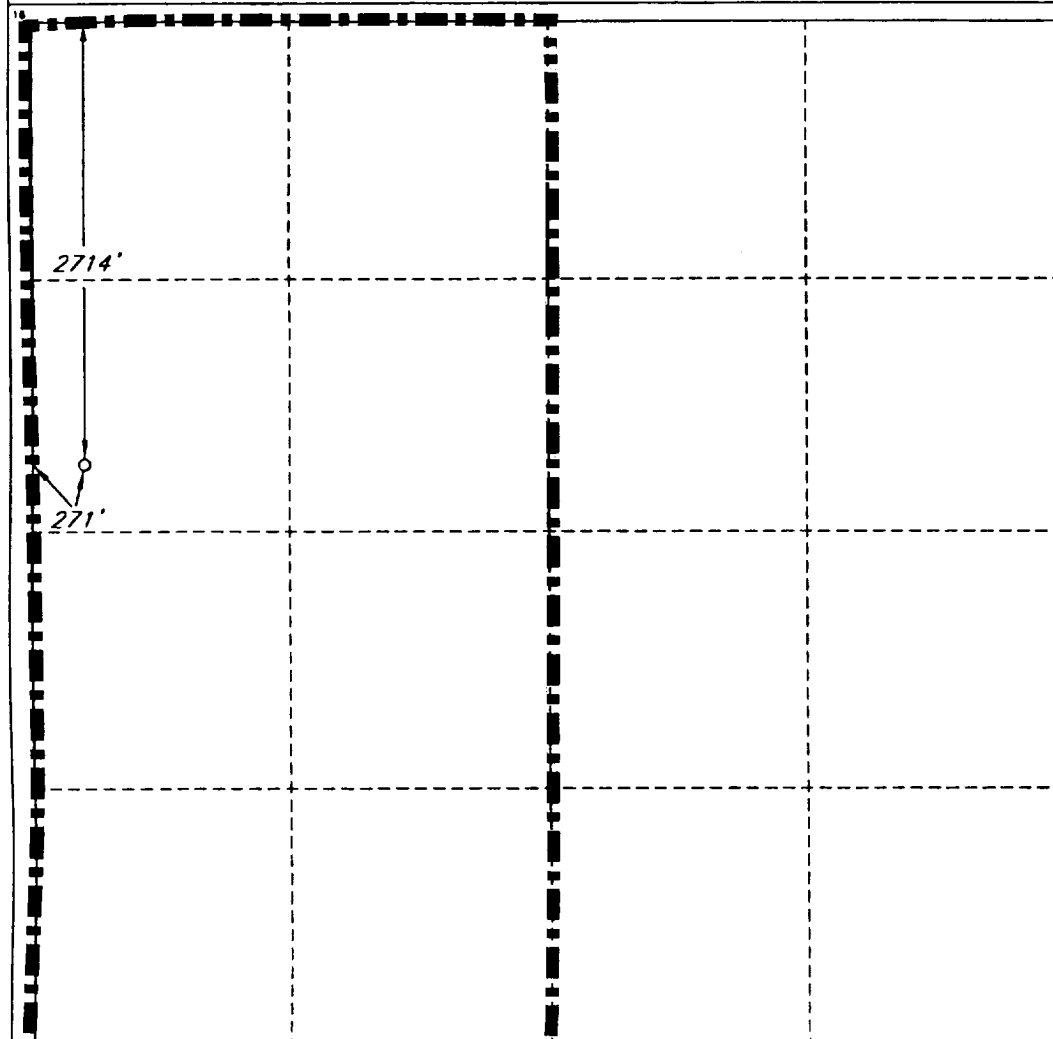
| | | | | | | | | | |
|--------------------|--------------|----------------------|----------------------------|---------|------------------------|---------------------------|-----------------------|------------------------|----------------|
| UL or lot no. E | Section 4 | Township 22 SOUTH | Range 24 EAST, N.M.P.M. | Lot Ida | Feet from the 2714' | North/South line NORTH | Feet from the 271' | East/West line WEST | County EDDY |
|--------------------|--------------|----------------------|----------------------------|---------|------------------------|---------------------------|-----------------------|------------------------|----------------|

11 BOTTOM HOLE LOCATION IF DIFFERENT FROM SURFACE

| | | | | | | | | | |
|---------------|---------|----------|-------|---------|---------------|------------------|---------------|----------------|--------|
| UL or lot no. | Section | Township | Range | Lot Ida | Feet from the | North/South line | Feet from the | East/West line | County |
|---------------|---------|----------|-------|---------|---------------|------------------|---------------|----------------|--------|

| | | | |
|--------------------|--------------------|-----------------------|--------------|
| 12 Dedicated Acres | 13 Joint or Infill | 14 Consolidation Code | 15 Order No. |
|--------------------|--------------------|-----------------------|--------------|

NO ALLOWABLE WELL BE ASSIGNED TO THIS COMPLETION UNTIL ALL INTERESTS HAVE BEEN
CONSOLIDATED OR A NON-STANDARD UNIT HAS BEEN APPROVED BY THE DIVISION



OPERATOR CERTIFICATION

I hereby certify that the information
contained herein is true and complete
to the best of my knowledge and belief.

Signature

Printed Name

Terry McCullough

Title

Sr. Production Clerk

Date

August 17, 1999

SURVEYOR CERTIFICATION

I hereby certify that the well
location shown on this plat was
plotted from field notes of actual
surveys made by me or under
my supervision, and that the
same is true and correct to the
best of my belief.

Date of Survey

SEPTEMBER 17, 1999

Signature and Seal
Professional Surveyor

Certificate No.

ROGER M. ROBBINS

