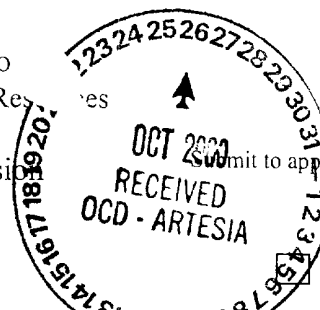


District I
1625 N. French Dr., Hobbs, NM 88240
District II
811 South First, Artesia, NM 88210
District III
1000 Rio Brazos Road, Aztec, NM 87410
District IV
2040 South Pacheco, Santa Fe, NM 87505

State of New Mexico
Energy Minerals and Natural Resources

Oil Conservation Division
2040 South Pacheco
Santa Fe, NM 87505



Form C-101
Revised March 17, 1999
Submit to appropriate District Office
State Lease - 6 Copies
Fee Lease - 5 Copies
AMENDED REPORT

APPLICATION FOR PERMIT TO DRILL, RE-ENTER, DEEPEN, PLUG BACK, OR ADD A ZONE

¹ Operator Name and Address Devon Energy Production Company, L.P. 20 North Broadway, Suite 1500 Oklahoma City, Oklahoma 73102-8260		² OGRID Number 6137
³ Property Code 23202		³ API Number 30 - 015 - 31401
⁵ Property Name Eddy "FV" State Com.		⁶ Well No. 5

⁷ Surface Location

UL or lot no.	Section	Township	Range	Lot Idn	Feet from the	North/South line	Feet from the	East/West line	County
M	25	20S	27E		660'	SOUTH	810'	WEST	EDDY

⁸ Proposed Bottom Hole Location If Different From Surface

UL or lot no.	Section	Township	Range	Lot Idn	Feet from the	North/South line	Feet from the	East/West line	County

⁹ Proposed Pool 1

Burton Flat (Morrow)

¹⁰ Proposed Pool 2

¹¹ Work Type Code N	¹² Well Type Code G	¹³ Cable/Rotary R	¹⁴ Lease Type Code S	¹⁵ Ground Level Elevation GL 3287'
¹⁶ Multiple No	¹⁷ Proposed Depth 11,500'	¹⁸ Formation MORROW	¹⁹ Contractor Patterson Drlg rig #5	²⁰ Spud Date November, 2000

Minimum WOC time 18 hrs.

²¹ Proposed Casing and Cement Program

Hole Size	Casing Size	Casing weight/foot	Setting Depth	Sacks of Cement	Estimated TOC
17 1/2"	13 3/8"	48#	500'	475	surface
12 1/4"	8 5/8"	32#	2500' 2200' 1300'	1000	surface
7 7/8"	5 1/2"	17# & 15.5#	11,500'	1000	7000'

²² Describe the proposed program. If this application is to DEEPEN or PLUG BACK, give the data on the present productive zone and proposed new productive zone.
Describe the blowout prevention program, if any. Use additional sheets if necessary.

Devon plans to drill this well to a total depth of 11,500 feet and complete it as a Morrow development well. If it is deemed non-commercial then it will be plugged and abandoned in accordance with the rules and regulations established by the New Mexico OCD. Blowout prevention equipment will be installed while drilling the intermediate and production holes.

Notify N.M.O.C.C. in sufficient time to witness cementing the 8 5/8" casing

²³ I hereby certify that the information given above is true and complete to the best of my knowledge and belief. Signature: Candace R. Graham Printed name: Candace R. Graham Title: Engineering Tech. Date: October 25, 2000		OIL CONSERVATION DIVISION Approved by: ORIGINAL SIGNED BY TIM W. SUM DISTRICT II SUPERVISOR Title: Approval Date: OCT 30 2000 Expiration Date: OCT 30 2001 Conditions of Approval: Attached <input type="checkbox"/>	
Phone: (405) 235-3611, X4520			

Operator to bring cement across all oil, gas and water bearing zones

DISTRICT I
P. O. Box 1980
Hobbs, NM 88241-1980

State of New Mexico
Energy, Minerals, and Natural Resources Department

Form C-102
Revised 02-10-94

Instructions on back

DISTRICT II
P. O. Drawer DD
Artesia, NM 88211-0719

DISTRICT III
1000 Rio Brazos Rd.
Aztec, NM 87410

OIL CONSERVATION DIVISION
P. O. Box 2088
Santa Fe, New Mexico 87504-2088

Submit to the Appropriate
District Office
State Lease - 4 copies
Fee Lease - 3 copies

☐ AMENDED REPORT

DISTRICT IV
P. O. Box 2088
Santa Fe, NM 87507-2088

WELL LOCATION AND ACREAGE DEDICATION PLAT

1 API Number		2 Pool Code		3 Pool Name Burton Flat (Morrow)			
4 Property Code		5 Property Name EDDY 'FV' STATE COM				6 Well Number 5	
7 OGRID No. 6137		8 Operator Name DEVON ENERGY PRODUCTION COMPANY, L.P.				9 Elevation 3287'	

10 SURFACE LOCATION

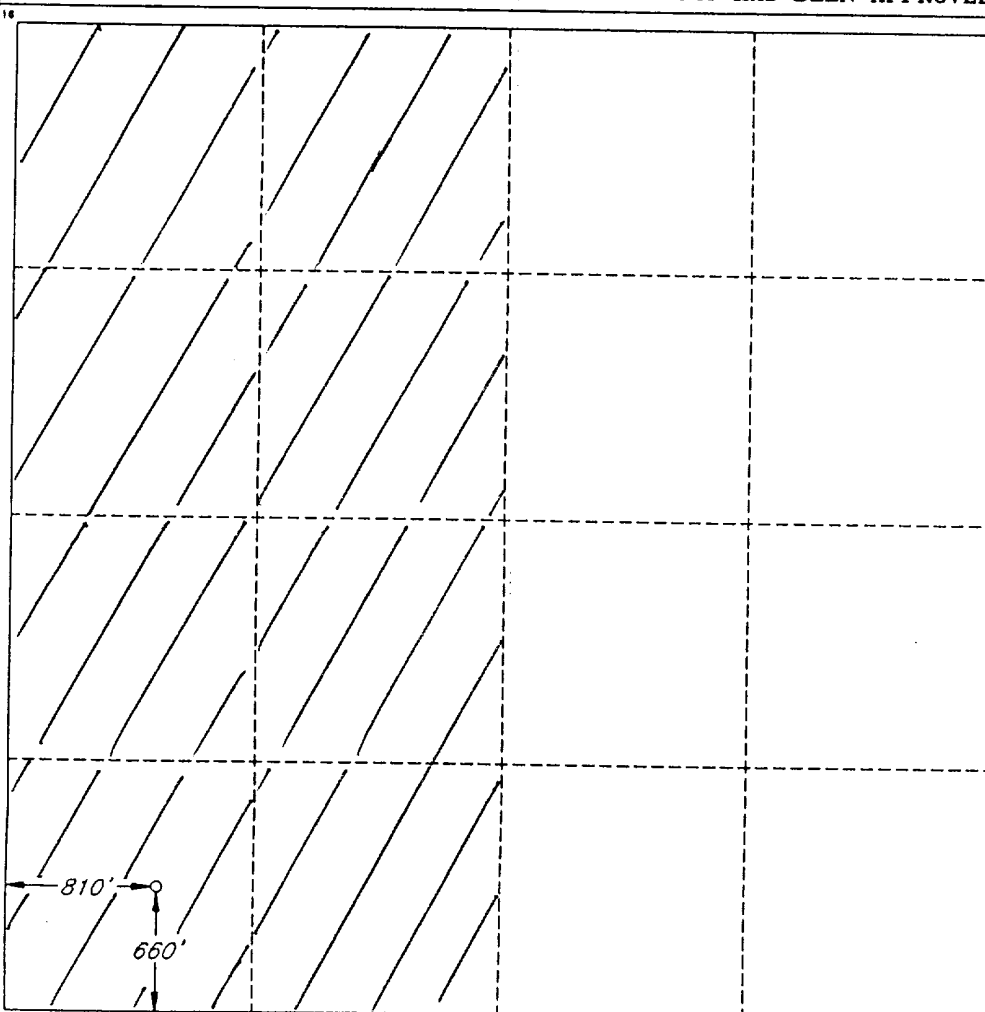
UL or lot no. M	Section 25	Township 20 SOUTH	Range 27 EAST, N.M.P.M.	Lot Ida	Feet from the 660'	North/South line SOUTH	Feet from the 810'	East/West line WEST	County EDDY
--------------------	---------------	----------------------	----------------------------	---------	-----------------------	---------------------------	-----------------------	------------------------	----------------

"BOTTOM HOLE LOCATION IF DIFFERENT FROM SURFACE

UL or lot no.	Section	Township	Range	Lot Ida	Feet from the	North/South line	Feet from the	East/West line	County
---------------	---------	----------	-------	---------	---------------	------------------	---------------	----------------	--------

12 Dedicated Acres 320	13 Joint or Infill	14 Consolidation Code	15 Order No.
---------------------------	--------------------	-----------------------	--------------

NO ALLOWABLE WELL BE ASSIGNED TO THIS COMPLETION UNTIL ALL INTERESTS HAVE BEEN
CONSOLIDATED OR A NON-STANDARD UNIT HAS BEEN APPROVED BY THE DIVISION



OPERATOR CERTIFICATION

I hereby certify that the information
contained herein is true and complete
to the best of my knowledge and belief.

Signature
Candace R. Graham

Printed Name
Candace R. Graham

Title
Engineering Tech.

Date
October 25, 2000

SURVEYOR CERTIFICATION

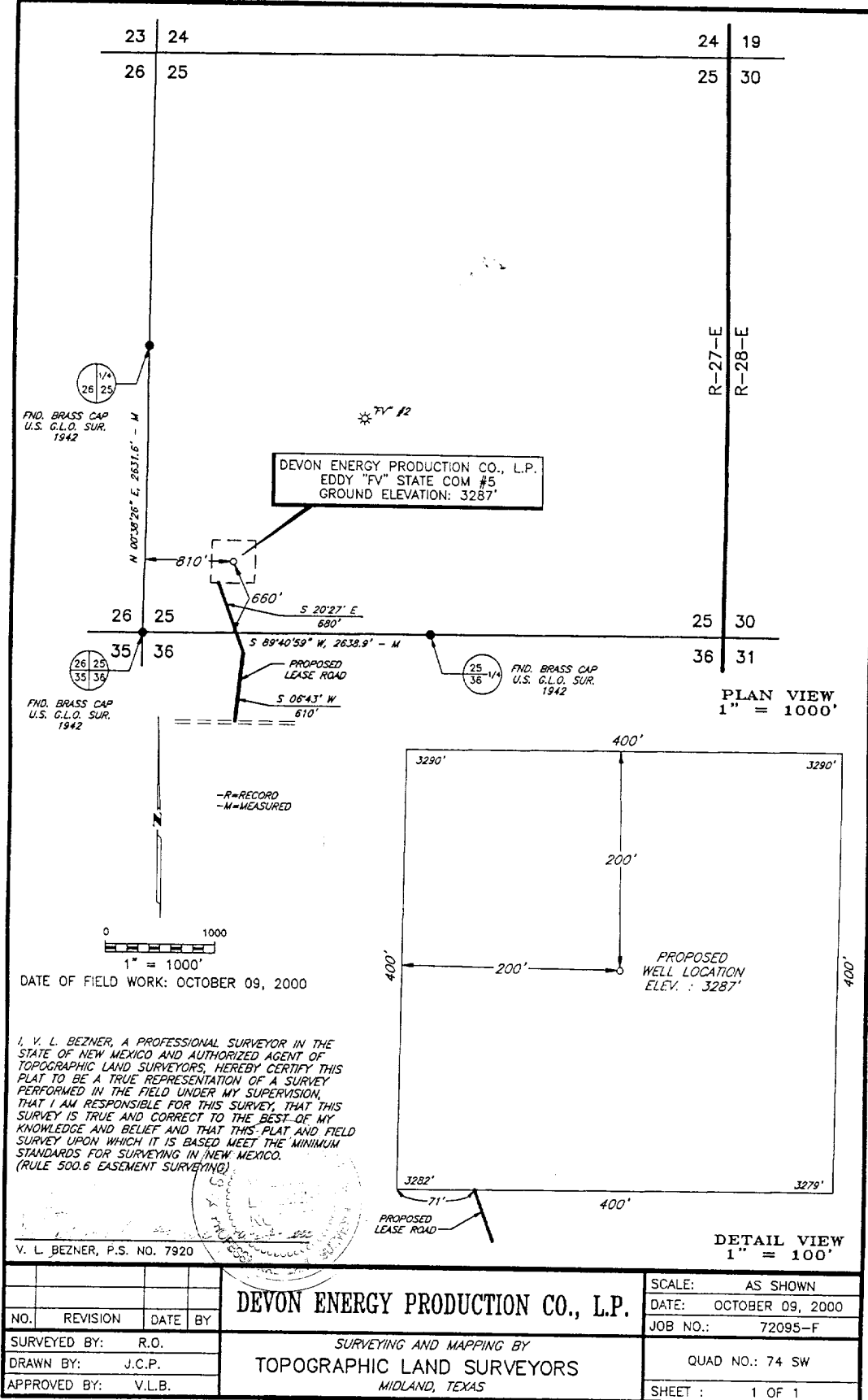
I hereby certify that the well
location shown on this plat was
plotted from field notes of actual
surveys made by me or under
my supervision, and that the
same is true and correct to the
best of my belief.

Date of Survey
OCTOBER 09, 2000

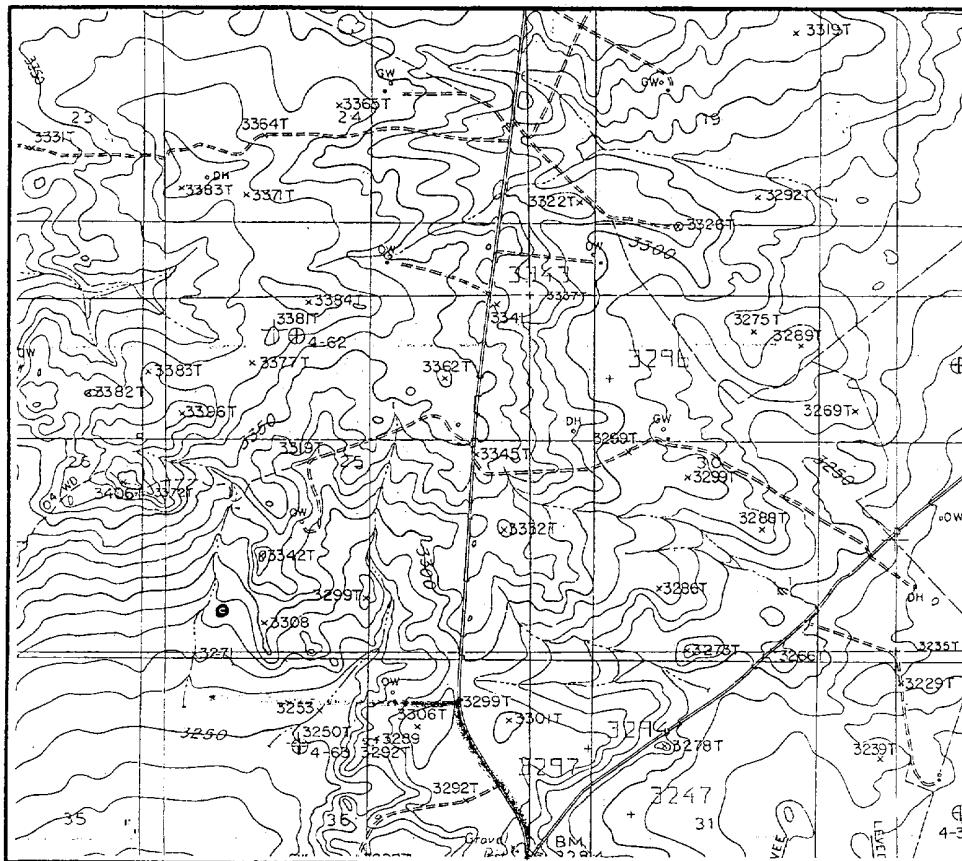
Signature and Seal of
Professional Surveyor

Certificate No.
V. L. BEZNER R.P.S. #7920
JOB #72095 / 74 SW / JCP

PLAT SHOWING PROPOSED
WELL LOCATION AND LEASE ROAD IN
SECTION 25, T-20-S, R-27-E, N.M.P.M.
EDDY COUNTY, NEW MEXICO



LOCATION & ELEVATION VERIFICATION MAP



SCALE : 1" = 2000'

CONTOUR INTERVAL 10 FEET

SECTION 25 TWP 20-S RGE 27-ESURVEY NEW MEXICO PRINCIPAL MERIDIANCOUNTY EDDY STATE NMDESCRIPTION 660' FSL & 810' FWLELEVATION 3287'OPERATOR DEVON ENERGY PRODUCTION COMPANY, L.P.LEASE EDDY "FV" STATE COM #5

U.S.G.S. TOPOGRAPHIC MAP

ANGEL DRAW, NEW MEXICOSCALED LAT. N 32°32'20"LONG. W 104°14'24"

This location has been very carefully staked on the ground according to the best official survey records, maps, and other data available to us.
Review this plot and notify us immediately of any possible discrepancy.

TOPOGRAPHIC LAND SURVEYORS

Surveying & Mapping for the Oil & Gas Industry

1307 N. HOBART
PAMPA, TX. 79065
(800) 658-6382

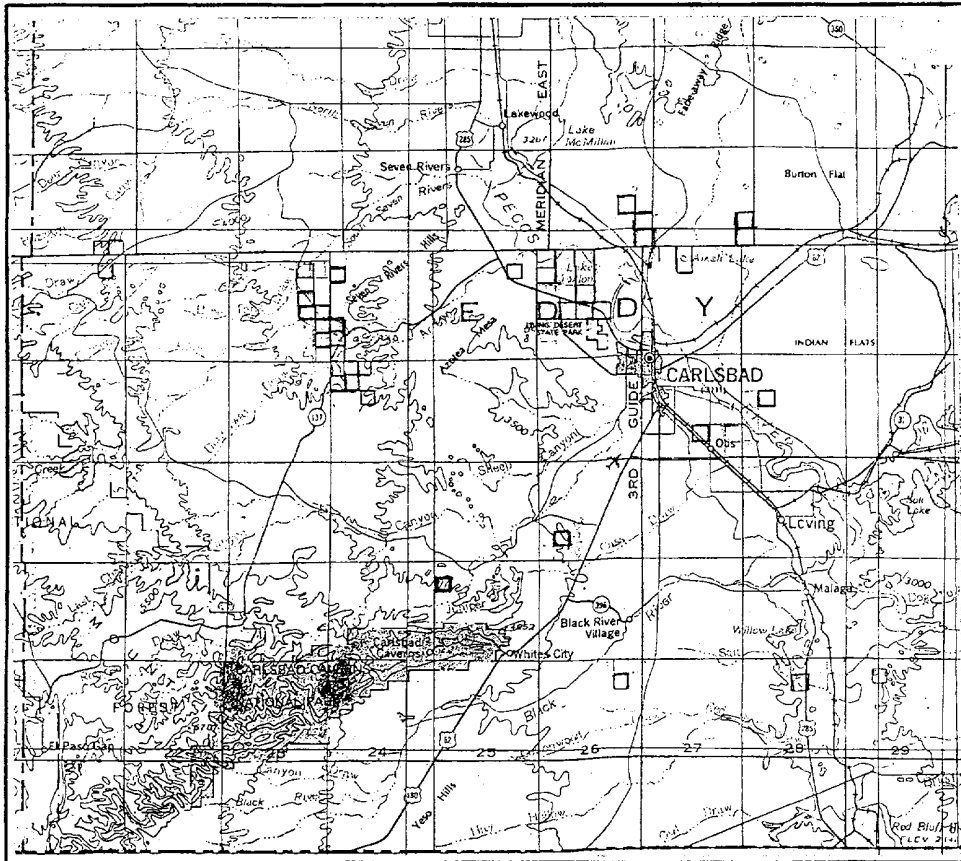
6709 N. CLASSEN BLVD.
OKLAHOMA CITY, OK. 73116
(800) 654-3219

2903 N. BIG SPRING
MIDLAND, TX. 79705
(800) 767-1653

Eddy FV 5 - directions
from the Junction of NM 200
& City Rd 206 go 4.2 miles
North, then turn left @ the
Oxy state CU lease sign.
go .6 of a mile west. Just
before you get to the Battlestar St #1
turn ^{North} & go .3 of a mile to location

by BJ Cathey

VICINITY MAP



SECTION 25 TWP 20-S RGE 27-E
 SURVEY NEW MEXICO PRINCIPAL MERIDIAN
 COUNTY EDDY STATE NM
 DESCRIPTION 660' FSL & 810' FWL

OPERATOR DEVON ENERGY PRODUCTION COMPANY, L.P.
 LEASE EDDY "FV" STATE COM #5

DISTANCE & DIRECTION FROM JCT. OF PAVED COUNTY
ROAD & HWY. 239 NORTH OF CARLSBAD, GO NORTH
2.2 MILES ON HWY. 239, THENCE WEST 0.6 MILE ON
LEASE ROAD TO A POINT ±1320 SOUTH OF THE
LOCATION.

This location has been very carefully staked on the ground according to the best official survey records, maps, and other data available to us.
 Review this plot and notify us immediately of any possible discrepancy.

TOPOGRAPHIC LAND SURVEYORS

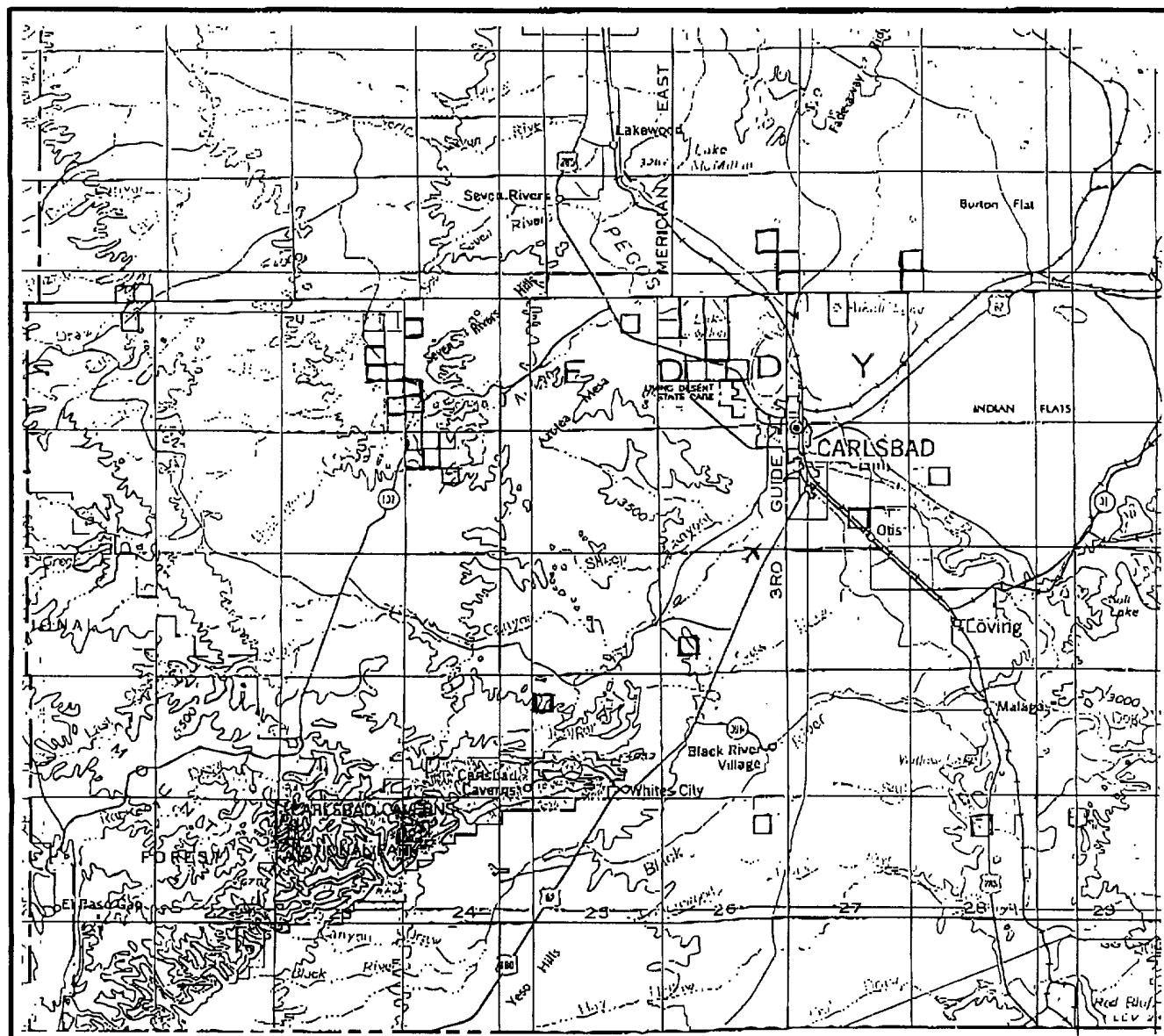
Surveying & Mapping for the Oil & Gas Industry

1307 N. HOBART
 PAMPA, TX. 79065
 (800) 658-6382

6709 N. CLASSEN BLVD.
 OKLAHOMA CITY, OK. 73116
 (800) 654-3219

2903 N. BIG SPRING
 MIDLAND, TX. 79705
 (800) 767-1653

VICINITY MAP

SECTION 25 TWP 20-S RGE 27-ESURVEY NEW MEXICO PRINCIPAL MERIDIANCOUNTY EDDY STATE NMDESCRIPTION 660' FSL & 810' FWLOPERATOR DEVON ENERGY PRODUCTION COMPANY, L.P.LEASE EDDY "FV" STATE COM #5DISTANCE & DIRECTION FROM JCT. OF PAVED COUNTYROAD 34 & HWY. 206 NORTH OF CARLSBAD, GO NORTH2.2 MILES ON HWY. 206, THENCE WEST 0.6 MILE ONLEASE ROAD TO A POINT ±1320 SOUTH OF THELOCATION.

This location has been very carefully staked on the ground according to the best official survey records, maps, and other data available to us.

Review this plat and notify us immediately of any possible discrepancy.

TOPOGRAPHIC LAND SURVEYORS

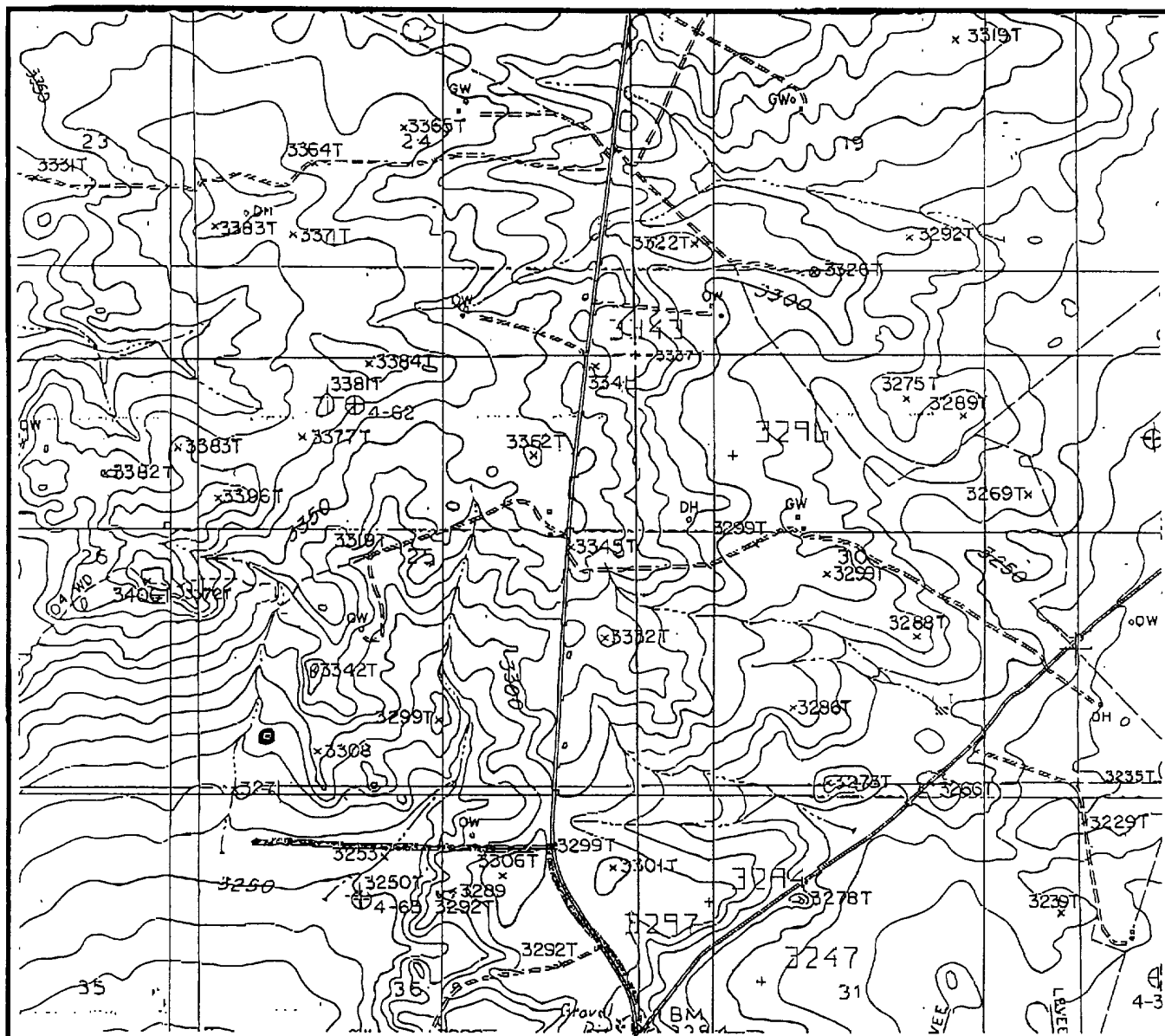
Surveying & Mapping for the Oil & Gas Industry

1307 N. HOBART
PAMPA, TX. 79065
(800) 658-6382

6709 N. CLASSEN BLVD.
OKLAHOMA CITY, OK. 73116
(800) 654-3219

2903 N. BIG SPRING
MIDLAND, TX. 79705
(800) 767-1653

LOCATION & ELEVATION VERIFICATION MAP



SCALE : 1" = 2000'

CONTOUR INTERVAL 10 FEET

SECTION 25 TWP 20-S RGE 27-ESURVEY NEW MEXICO PRINCIPAL MERIDIANCOUNTY EDDY STATE NMDESCRIPTION 660' FSL & 810' FWLELEVATION 3287'OPERATOR DEVON ENERGY PRODUCTION COMPANY, L.P.LEASE EDDY "FV" STATE COM #5

U.S.G.S. TOPOGRAPHIC MAP

ANGEL DRAW, NEW MEXICOSCALED LAT. N 32°32'20"LONG. W 104°14'24"

This location has been very carefully staked on the ground according to the best official survey records, maps, and other data available to us.

Review this plot and notify us immediately of any possible discrepancy.

TOPOGRAPHIC LAND SURVEYORS

Surveying & Mapping for the Oil & Gas Industry

1307 N. HOBART
PAMPA, TX. 79065
(800) 658-6382

6709 N. CLASSEN BLVD.
OKLAHOMA CITY, OK. 73116
(800) 654-3219

2903 N. BIG SPRING
MIDLAND, TX. 79705
(800) 767-1653