

1625 N. French Dr., Hobbs, NM 88240
District II
811 South First, Artesia, NM 88210
District III
1000 Rio Brazos Road, Aztec, NM 87410
District IV
2040 South Pacheco, Santa Fe, NM 87505

State of New Mexico
Energy Minerals and Natural Resources

Oil Conservation Division
2040 South Pacheco
Santa Fe, NM 87505

Form C-101
Revised March 17, 1999

Submit to appropriate District Office
State Lease - 6 Copies
Fee Lease - 5 Copies

☐ AMENDED REPORT

APPLICATION FOR PERMIT TO DRILL, RE-ENTER, DEEPEN, PLUGBACK, OR ADD A ZONE

Operator Name and Address CONCHO RESOURCES, INC. 110 WEST LOUISIANA SUITE 410 MIDLAND, TEXAS 79701		OGRID Number 166111
Property Code 28300	Property Name WAGON WHEEL "2" STATE	API Number 30-015-31852
		Well No. 1

Surface Location

UL or lot no. Lot 2 unit "B"	Section 2	Township 22S	Range 22E	Lot Idn	Feet from the 1200'	North/South line NORTH	Feet from the 1650'	East/West line EAST	County EDDY CO.
------------------------------------	--------------	-----------------	--------------	---------	------------------------	---------------------------	------------------------	------------------------	--------------------

Proposed Bottom Hole Location If Different From Surface

UL or lot no.	Section	Township	Range	Lot Idn	Feet from the	North/South line	Feet from the	East/West line	County
---------------	---------	----------	-------	---------	---------------	------------------	---------------	----------------	--------

Proposed Pool 1

WC Morrow

Proposed Pool 2

Work Type Code N	Well Type Code G	Cable/Rotary ROTARY	Lease Type Code S	Ground Level Elevation 4131'
Multiple NO	Proposed Depth 9800'	Formation MORROW	Contractor Unknown	Spud Date when approved

Proposed Casing and Cement Program

Hole Size	Casing Size	Casing weight/foot	Setting Depth	Sacks of Cement	Estimated TOC
25"	20"	Conductor	40'	Redi-mix	Surface
17½"	13 3/8"	48	620'	700 Sx.	Surface
12½"	9 5/8"	40	2050'	1000 Sx.	Surface
8 3/4"	7"	26	9800'	1000 Sx.	6000'

Describe the proposed program. If this application is to DEEPEN or PLUG BACK, give the data on the present productive zone and proposed new productive zone.
Describe the blowout prevention program, if any. Use additional sheets if necessary.

1. Drill 25" hole to 40'. Set 40' of 20" conductor and cement to surface with Redi-mix.
2. Drill 17½" hole to 620'. Run and set 620' of 13 3/8" 48# H-40 casing. cement with 500 Sx. of Class "C" cement +2% CaCl, +¼# Flocele/Sx. tail in with 200 Sx. of Class "C" neat, circulate cement to surface.
3. Drill 12½" hole to 2050'. Run and set 2050' of 9 5/8" 40# J-55 ST&C casing. Cement with 800 Sx. of Class "C" cement + 2% CaCl, +¼# Florels/Sx, tail in with 200 Sx. of Class "C" neat, circulate cement to surface.
4. Drill 8 3/4" hole to 9800'. Run and set 9800' of 7" 26# N-80 & J-55 LT&C casing. Cement with 1000 Sx- of Class "H" Premium Plus cement + additives, estimate top of cement 6000' from surface.

I hereby certify that the information given above is true and complete to the best of my knowledge and belief.

Signature:

Printed name: Joe T. Janica

Title: Agent

Date: 06/27/01

Phone: 505-391-8503

OIL CONSERVATION DIVISION

Approved by:

ORIGINAL SIGNED BY TIM W. GUN
DISTRICT II SUPERVISOR

Title:

Approval Date: JUN 27 2001

Expiration Date: JUN 27 2002

Conditions of Approval:

Attached ☐

DISTRICT I

P.O. Box 1980, Hobbs, NM 88241-1980

State of New Mexico

Energy, Minerals and Natural Resources Department

Form C-102

Revised February 10, 1994

Submit to Appropriate District Office

State Lease - 4 Copies

Fee Lease - 3 Copies

DISTRICT II

P.O. Drawer DD, Artesia, NM 88211-0719

OIL CONSERVATION DIVISION

P.O. Box 2088

Santa Fe, New Mexico 87504-2088

DISTRICT III

1000 Rio Brazos Rd., Artec, NM 87410

DISTRICT IV

P.O. BOX 2088, SANTA FE, N.M. 87504-2088

WELL LOCATION AND ACREAGE DEDICATION PLAT

☐ AMENDED REPORT

API Number		Pool Code	Pool Name
Property Code	Property Name WAGON WHEEL 2 STATE		Well Number 1
OGRD No. 166111	Operator Name CONCHO RESOURCES, INC.		Elevation 4131'

Surface Location

UL or lot No.	Section	Township	Range	Lot Idn	Feet from the	North/South line	Feet from the	East/West line	County
2	2	22-S	22-E		1200	NORTH	1650	EAST	EDDY

Bottom Hole Location If Different From Surface

UL or lot No.	Section	Township	Range	Lot Idn	Feet from the	North/South line	Feet from the	East/West line	County
Dedicated Acres 320		Joint or Infill	Consolidation Code		Order No.				

NO ALLOWABLE WILL BE ASSIGNED TO THIS COMPLETION UNTIL ALL INTERESTS HAVE BEEN CONSOLIDATED
OR A NON-STANDARD UNIT HAS BEEN APPROVED BY THE DIVISION

LOT 4 40.10 AC	LOT 3 40.14 AC	LOT 2 40.18 AC	LOT 1 40.22 AC
		1200'	
		1650'	

OPERATOR CERTIFICATION

I hereby certify that the information contained herein is true and complete to the best of my knowledge and belief.

Signature

Joe T. Janica

Printed Name

Agent

Title

06/27/01

Date

SURVEYOR CERTIFICATION

I hereby certify that the well location shown on this plat was plotted from field notes of actual surveys made by me or under my supervision, and that the same is true and correct to the best of my belief.

JUNE 25, 2001

Date Surveyed

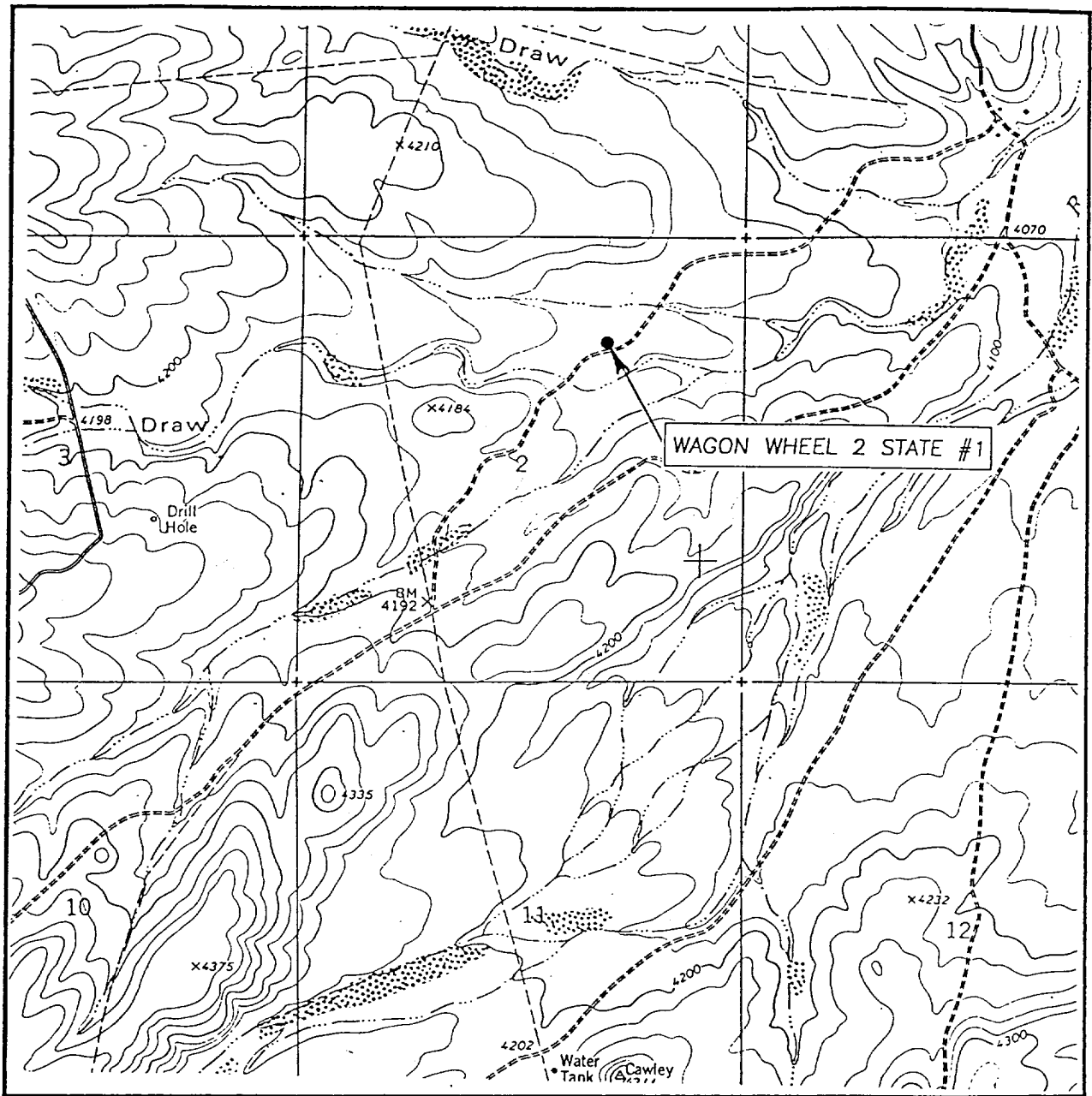
AWB

Signature & Seal of
Professional Surveyor

Gary H. Edson 6/24/01
01-11-0787

Certificate No. RONALD F. EIDSON 3239
GARY EIDSON 12641

LOCATION VERIFICATION MAP



SCALE: 1" = 2000'

CONTOUR INTERVAL: 20'

CAWLEY DRAW, N.M.

SEC. 2 TWP. 22-S RGE. 22-E

SURVEY N.M.P.M.

COUNTY EDDY

DESCRIPTION 1200' FNL & 1650' FEL

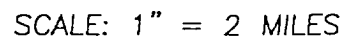
ELEVATION 4131'

OPERATOR CONCHO RESOURCES, INC.

LEASE WAGON WHEEL 2 STATE

U.S.G.S. TOPOGRAPHIC MAP
CAWLEY DRAW, N.M.

JOHN WEST SURVEYING
HOBBS, NEW MEXICO
(505) 393-3117



LEASE WAGON WHEEL 2 STATE

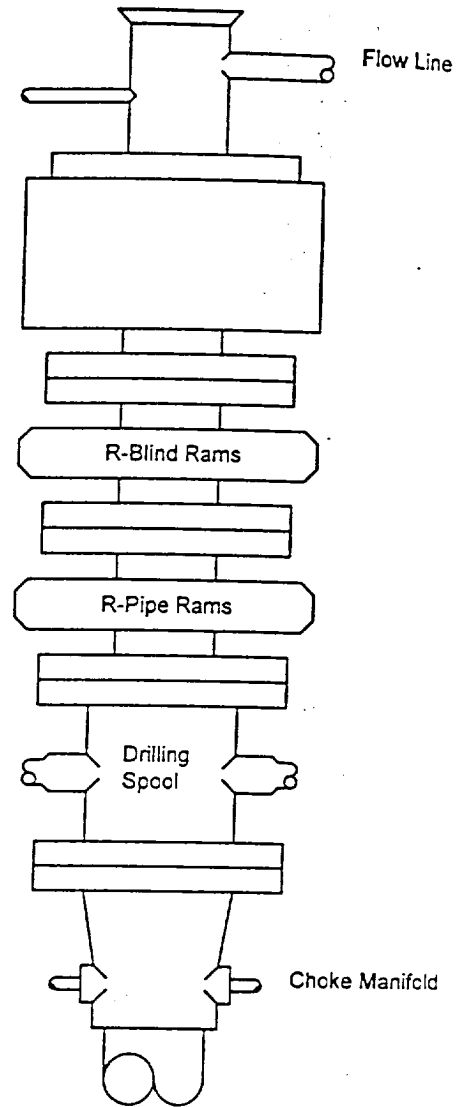
JOHN WEST SURVEYING
HOBBS, NEW MEXICO
(505) 393-3117

BLOWOUT PREVENTER SYSTEM

5000 PS.

Fill Line

Flow Line



Type 900 Series
5000 psi WP

Choke Manifold Assembly for 5M WP System

