

UNITED STATES  
DEPARTMENT OF THE INTERIOR  
BUREAU OF LAND MANAGEMENT

SUBMIT IN TRIPLICATE\*  
(Other instructions on reverse side)

FORM APPROVED  
OMB NO. 1004-0136  
Expires: February 28, 1995

APPLICATION FOR PERMIT TO DRILL OR DEEPEN

1a. TYPE OF WORK

DRILL ☒

DEEPEN ☐

b. TYPE OF WELL

OIL WELL ☐

GAS WELL ☒

OTHER

SINGLE ZONE ☒

MULTIPLE ZONE ☐

2. NAME OF OPERATOR

OXY USA WTP Limited Partnership

192463

192463

3. ADDRESS AND TELEPHONE NO.

P.O. Box 50250, Midland, TX 79710-0250

915-685-5717

4. LOCATION OF WELL (Report location clearly and in accordance with any State requirements. \*)  
At surface

1650 FNL 860 FEL SENE(H)  
At proposed prod. zone

14. DISTANCE IN MILES AND DIRECTION FROM NEAREST TOWN OR POST OFFICE\*

7 miles north of Carlsbad, NM

15. DISTANCE FROM PROPOSED\*

LOCATION TO NEAREST  
PROPERTY OR LEASE LINE, FT.  
(Also to nearest drlg. unit line, if any) 860'

16. NO. OF ACRES IN LEASE

320

17. NO. OF ACRES ASSIGNED  
TO THIS WELL

320

18. DISTANCE FROM PROPOSED LOCATION\*  
TO NEAREST WELL, DRILLING, COMPLETED,  
OR APPLIED FOR, ON THIS LEASE, FT.

2978'

19. PROPOSED DEPTH

11400'

20. ROTARY OR CABLE TOOLS

R

21. ELEVATIONS (Show whether DF, RT, GR, etc.)

3331'

22. APPROX. DATE WORK WILL START\*

9/1/01

23.

PROPOSED CASING AND CEMENTING PROGRAM

Capitan Controlled Water Basin

SIZE OF HOLE	GRADE, SIZE OF CASING	WEIGHT PER FOOT	SETTING DEPTH	QUANTITY OF CEMENT
17-1/2"	13-3/8" H40	48#	600'	550sx - circulate
12-1/4"	9-5/8" K55	36#	3000'	850sx - circulate
8-3/4"	5-1/2" N80-S95	17#	11400'	775sx - EST TOC 8300'

SEE OTHER SIDE

APPROVAL SUBJECT TO  
GENERAL REQUIREMENTS AND  
SPECIAL STIPULATIONS  
ATTACHED

IN ABOVE SPACE DESCRIBE PROPOSED PROGRAM: If proposal is to deepen, give data on present productive zone and proposed new productive zone. If proposal is to drill or deepen directionally, give pertinent data on subsurface locations and measured and true vertical depths. Give blowout preventer program, if any.

24.

SIGNED

*[Signature]*

TITLE Sr. Regulatory Analyst

DATE

7/24/01

(This space for Federal or State office use)

PERMIT NO.

APPROVAL DATE

Application approval does not warrant or certify that the applicant holds legal or equitable title to those rights in the subject lease which would entitle the applicant to conduct operations thereon.

CONDITIONS OF APPROVAL, IF ANY:

/S/ JOE G. LARA

ACTING

FIELD MANAGER

APPROVED BY

TITLE

DATE

OCT 04 2001

\*See Instructions On Reverse Side

Title 18 U.S.C. Section 1001, makes it a crime for any person knowingly and willfully to make to any department or agency of the United States any false, fictitious or fraudulent statements or representations as to any matter within its jurisdiction.

OXY Hopsing Federal #2  
1650 FNL 860 FEL SEC 14 T20S R27E Eddy County, NM  
Federal Lease No. NM-0455265

PROPOSED TD: 11400' TVD

BOP PROGRAM: 0'-600' None

600'-3000' 13-5/8" 3M annular preventer.

3000'-11400' 11" 5M blind pipe rams with 5M annular preventer  
and rotating head below 8300'.

CASING: Surface: 13-3/8" OD 48# H40 ST&C new casing set at 600'  
17-1/2" hole

Intermediate: 9-5/8" OD 36# K55 ST&C new casing from 0-3000'  
12-1/4" hole

Production: 5-1/2" OD 17# N80-S95 LT&C new casing from 0-11400'  
8-3/4" hole

CEMENT: Surface - Circulate cement with 350sx 35:65 POZ/C with 6% Bentonite  
+ 2% CaCl<sub>2</sub> + .25#/sx Cello-Seal followed by 200sx Cl C with 2% CaCl<sub>2</sub>.

Intermediate - Circulate cement with 650sx 35:65 POZ/C with 6%  
Bentonite + 2% CaCl<sub>2</sub> + .25#/sx Cello-Seal followed by 200sx Cl C  
with 2% CaCl<sub>2</sub>.

Production - Cement with 700sx 15:61:11 POZ/C/CSE with .5% FL-52  
+ .5% FL-25 + 8#/sx Gilsonite followed by 75sx Cl C with .7%  
FL-25. Estimated top of cement is 8300'.

Note: Cement volumes may need to be adjusted to hole caliper.

MUD: 0-600' Fresh water/native mud. Lime for pH control  
(9-10). Paper for seepage.  
Wt 8.7-9.2 ppg, Vis 32-34 sec

600'-3000' Fresh/\*Brine water. Lime for pH control (10.0-  
10.5). Paper for seepage.  
Wt 8.3-9.0/10.0-10.1ppg, Vis 28-29 sec  
\*Fresh water will be used unless chlorides in  
the mud system increases to 20000PPM.

3000'-8300' Fresh water. Lime for pH control (9-9.5). Paper  
for seepage.  
Wt 8.3-8.5 ppg, Vis 28-29 sec

8300'-9800' Cut brine. Lime for pH control (10-10.5).  
Wt 9.6-10.0 ppg, Vis 28-29sec

9800'-11400' Mud up with an Duo Vis/Flo Trol mud system.  
Wt 9.6-10.0ppg, Vis 32-36sec, WL<10cc

2001 JUL 25 AM 9:46

RECEIVED

DISTRICT I  
1625 N. French Dr., Hobbs, NM 88240  
DISTRICT II  
811 South First, Artesia, NM 88210  
DISTRICT III  
1000 Rio Brazos Rd., Artesia, NM 87410  
DISTRICT IV  
2040 South Pacheco, Santa Fe, NM 87506

State of New Mexico  
Energy, Minerals and Natural Resources Department

Form C-102  
Revised March 17, 1999

Submit to Appropriate District Office  
State Lease - 4 Copies  
Fee Lease - 3 Copies

OIL CONSERVATION DIVISION

2040 South Pacheco  
Santa Fe, New Mexico 87504-2088

☐ AMENDED REPORT

WELL LOCATION AND ACREAGE DEDICATION PLAT

API Number 30-015-	Pool Code 73280	Pool Name Burton Flat Morrow
Property Code	Property Name OXY HOPSING FEDERAL	Well Number 2
OGRID No. 192463	Operator Name OXY USA WTP Limited Partnership	Elevation 3331'

Surface Location

UL or lot No. H	Section 14	Township 20 S	Range 27 E	Lot Idn	Feet from the 1650'	North/South line NORTH	Feet from the 860'	East/West line EAST	County EDDY
--------------------	---------------	------------------	---------------	---------	------------------------	---------------------------	-----------------------	------------------------	----------------

Bottom Hole Location If Different From Surface

UL or lot No.	Section	Township	Range	Lot Idn	Feet from the	North/South line	Feet from the	East/West line	County
Dedicated Acres 320	Joint or Infill Yes	Consolidation Code	Order No.						

NO ALLOWABLE WILL BE ASSIGNED TO THIS COMPLETION UNTIL ALL INTERESTS HAVE BEEN CONSOLIDATED  
OR A NON-STANDARD UNIT HAS BEEN APPROVED BY THE DIVISION

	<b>OPERATOR CERTIFICATION</b> <i>I hereby certify the the information contained herein is true and complete to the best of my knowledge and belief.</i>  Signature David Stewart Printed Name Sr. Regulatory Analyst Title 7/24/01 Date
	<b>SURVEYOR CERTIFICATION</b> <i>I hereby certify that the well location shown on this plat was plotted from field notes of actual surveys made by me or under my supervision and that the same is true and correct to the best of my belief.</i>  JULY 16, 2001 Date Surveyed Signature & Seal of Professional Surveyor W.O. No. 1704 Certificate No. Gary Jones 7977 JLP BASIN SURVEYS

OXY USA WTP Limited Partnership  
P.O. Box 50250, Midland, TX 79710-0250

July 24, 2001

United States Department of the Interior  
Bureau of Land Management  
Roswell District Office  
2909 West Second Street  
Roswell, New Mexico 88201

Re: Application for Permit to Drill  
OXY USA WTP Limited Partnership  
OXY Hopsing Federal #2  
Eddy County, New Mexico  
Lease No. NM0455265

Gentlemen:

OXY USA WTP Limited Partnership respectfully requests permission to drill our OXY Hopsing Federal #2 located 1650 FNL and 860 FEL of Section 14, T20S, R27E, Eddy County, New Mexico, Federal Lease No. NM0455265. The proposed well will be drilled to a TD of approximately 11400' (TVD). The location and work area has been staked. It is approximately 7 miles north of Carlsbad, New Mexico.

In accordance with requirements stipulated in Federal Onshore Oil and Gas Order No. 1 under 43 CFR 3162.1, our Application for Permission to Drill and supporting evidence is hereby submitted.

I. Application for Permit to Drill:

1. Form 3160.3, Application for Permit to Drill.
2. Form C-102 Location and Acreage Dedication Plat certified by Gary L. Jones, Registered Land Surveyor No. 7977 in the State of New Mexico, dated July 16, 2001.
3. The elevation of the unprepared ground is 3331 feet above sea level.
4. The geologic name of the surface formation is Permian Rustler.
5. Rotary drilling equipment will be utilized to drill the well to TD 11400' (TVD), and run casing. This equipment will then be rigged down and the well will be completed with a pulling unit.
6. Proposed total depth is 11400' TVD.
7. Estimated tops of important geologic markers.

Wolfcamp	8500' TVD
Strawn	9850' TVD
Atoka	10400' TVD
Morrow	10700' TVD

8. Estimated depths at which anticipated water, oil, gas or other mineral bearing formations are expected to be encountered:

Primary Objective:	Morrow	10700' TVD
Secondary Objective:	Atoka	10400' TVD

RECEIVED

2001 JUL 25 AM 9:46

BUREAU AND NIGHT  
POSTAL OFFICE

9. The proposed casing program is as follows:

Surface: 13-3/8" 48# H40 ST&C new casing set at 600'  
Intermediate: 9-5/8" 36# K55 ST&C new casing from 0-3000'  
Production: 5-1/2" 17# N80 LT&C new casing from 0-11400'

10. Casing setting depth and cementing program:

- A. 13-3/8" surface casing set at 600' in 17-1/2" hole.  
Circulate cement with 350sx 35:65 POZ/C w/ 6% Bentonite + 2%  $\text{CaCl}_2$  + .25#/sx Cello-Seal followed by 200sx Class C w/ 2%  $\text{CaCl}_2$ .

If cement does not circulate, a temperature survey will be run to find the TOC and then finish cementing to surface through 1" using Class C with 2%  $\text{CaCl}_2$ .

- B. 9-5/8" intermediate casing set at 3000' in 12 1/4" hole.  
Circulate cement with 650sx 35:65 POZ/C w/ 6% Bentonite + 2%  $\text{CaCl}_2$  + .25#/sx Cello-Seal followed by 200sx Class C w/ 2%  $\text{CaCl}_2$ .

If hole conditions dictate, a DV tool may be run to ensure that the intermediate string is cemented to surface.

If cement does not circulate, a temperature survey will be run to find the TOC and then finish cementing to surface through 1" using Class C with 2%  $\text{CaCl}_2$ .

Note: Cement volumes may be adjusted according to fluid caliper.

- C. 5-1/2" production casing set at 11400'. Cement with 700sx 15:61:11 POZ/C/CSE w/ .5% FL-25 + .5% FL-52 + 8#/sx Gilsonite followed by 75sx Class C w/ .7% FL-25.

Estimated top of cement is 8300'.

Note: Cement volumes may need to be adjusted to hole caliper.

11. Pressure Control Equipment

0' - 600'	None
600' - 3000'	13-3/8" 3M annular preventer.
3000' - 11400'	11" 5000# ram type preventers with one set blind rams and one set pipe rams and a 5000# annular type preventer. A choke manifold and 120 gallon accumulator with floor and remote operating stations and auxiliary power system. Rotating head below 8300'. Exhibit A.

A kelly cock will be installed and maintained in operable condition and a drill string safety valve in the open position will be available on the rig floor.

After setting the 9-5/8" casing, the blowout preventers and related control equipment shall be pressure tested to 5000 psi. Any equipment failing to test satisfactorily shall be repaired or replaced. Results of the BOP test will be recorded in the Driller's Log. The BOP's will be maintained ready for use until drilling operations are completed.

BOP drills will be conducted as necessary to assure that equipment is operational and each crew is properly trained to carry out emergency duties.

Accumulator shall maintain a pressure capacity reserve at all times to provide for the close-open-close sequence of the blind and pipe rams of the hydraulic preventers.

12. Mud Program:

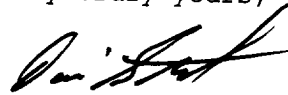
0 - 600'	Fresh water/native mud. Lime for pH control (9-10). Paper for seepage. Wt. 8.7-9.2 ppg, vis 32-34 sec.
600' - 3000'	Fresh/*brine water. Lime for pH control (10-10.5). Paper for seepage. Wt. 8.3-9.0/10.0-10.1ppg, vis 28-29 sec. *Fresh water will be used unless chlorides in the mud system increase to 20000PPM.
3000' - 8300'	Fresh water. Lime for pH control (9-9.5). Paper for seepage. Wt. 8.3-8.5 ppg, vis 28-29 sec.
8300' - 9800'	Cut brine. Lime for pH control (10-10.5). Wt. 9.6-10.0 ppg, vis 28-29 sec.
9800' - 11400'	Mud up with an Duo Vis/Flo Trol system. Wt. 9.6-10.0 ppg, Vis 32-36sec, WL<10cc.

Mud system monitoring equipment with derrick floor indicators and visual/audio alarms shall be installed and operative prior to drilling into the Wolfcamp formation. This equipment will remain in use until the production casing is run and cemented. Monitoring equipment shall consist of the following:

- 1) A recording pit level indicator.
- 2) A pit volume totalizer.
- 3) A flowline sensor.

13. Testing, Logging and Coring Program:
  - A. Testing program: No DST's are anticipated.
  - B. Mud logging program: One-man unit from 6000' to TD.
  - C. Electric logging program: CNL/LDT/CAL/GR, DLL/CAL/GR.
  - D. Coring program: Possible sidewall rotary cores.
14. No abnormal temperatures, or H2S gas are anticipated. The highest anticipated pressure gradient would be .55psi/ft. Adequate flare lines will be installed off the mud/gas separator where gas may be flared safely.
15. Anticipated starting date is September 1, 2001. It should take approximately 28 days to drill the well and another 10 days to complete.
16. The Multi-Point Surface Use & Operation Plan is attached.
17. If the Bureau of Land Management needs additional information to evaluate this application, please advise.

Very truly yours,



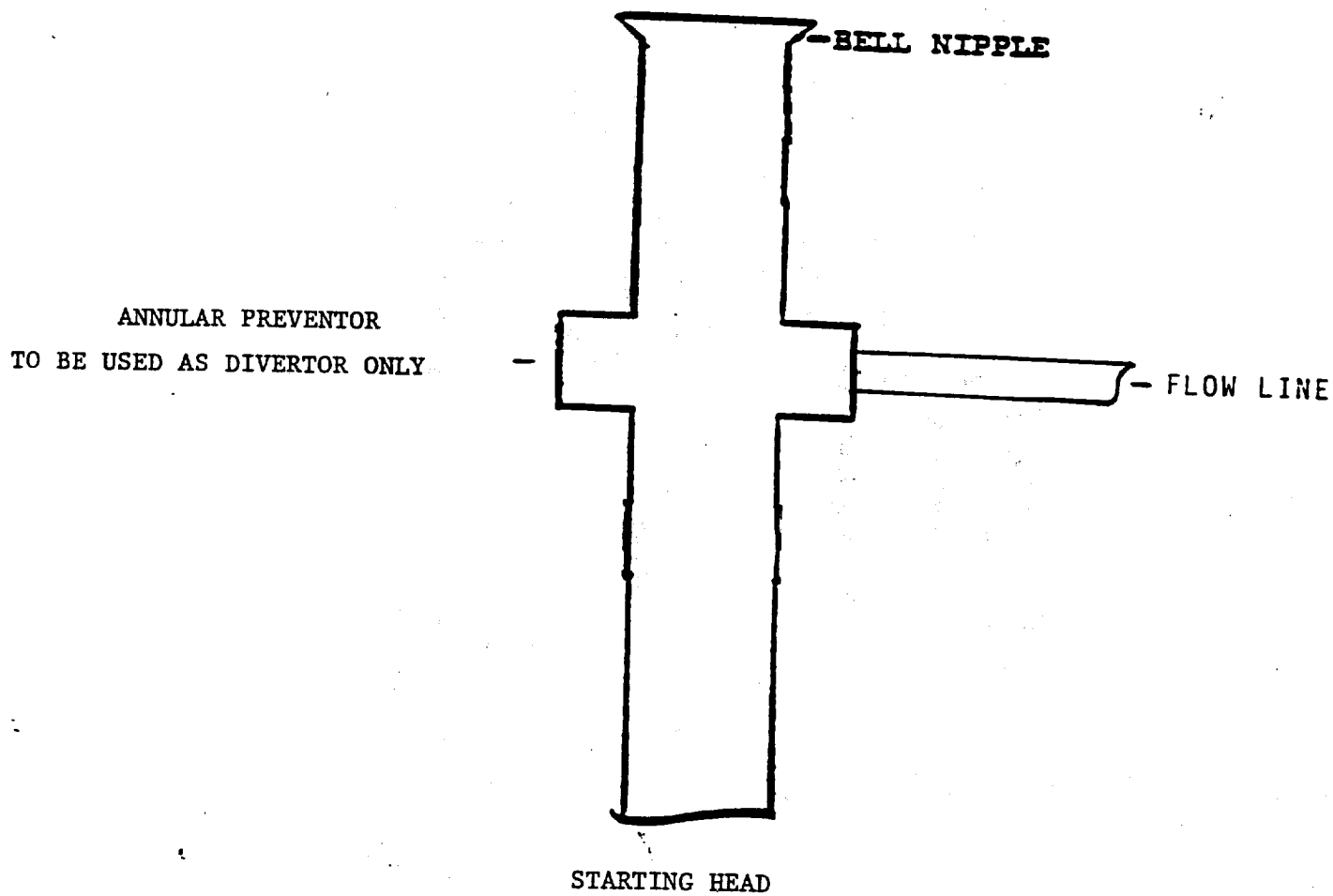
David Stewart  
Sr. Regulatory Analyst  
OXY USA WTP Limited Partnership

DRS/drs

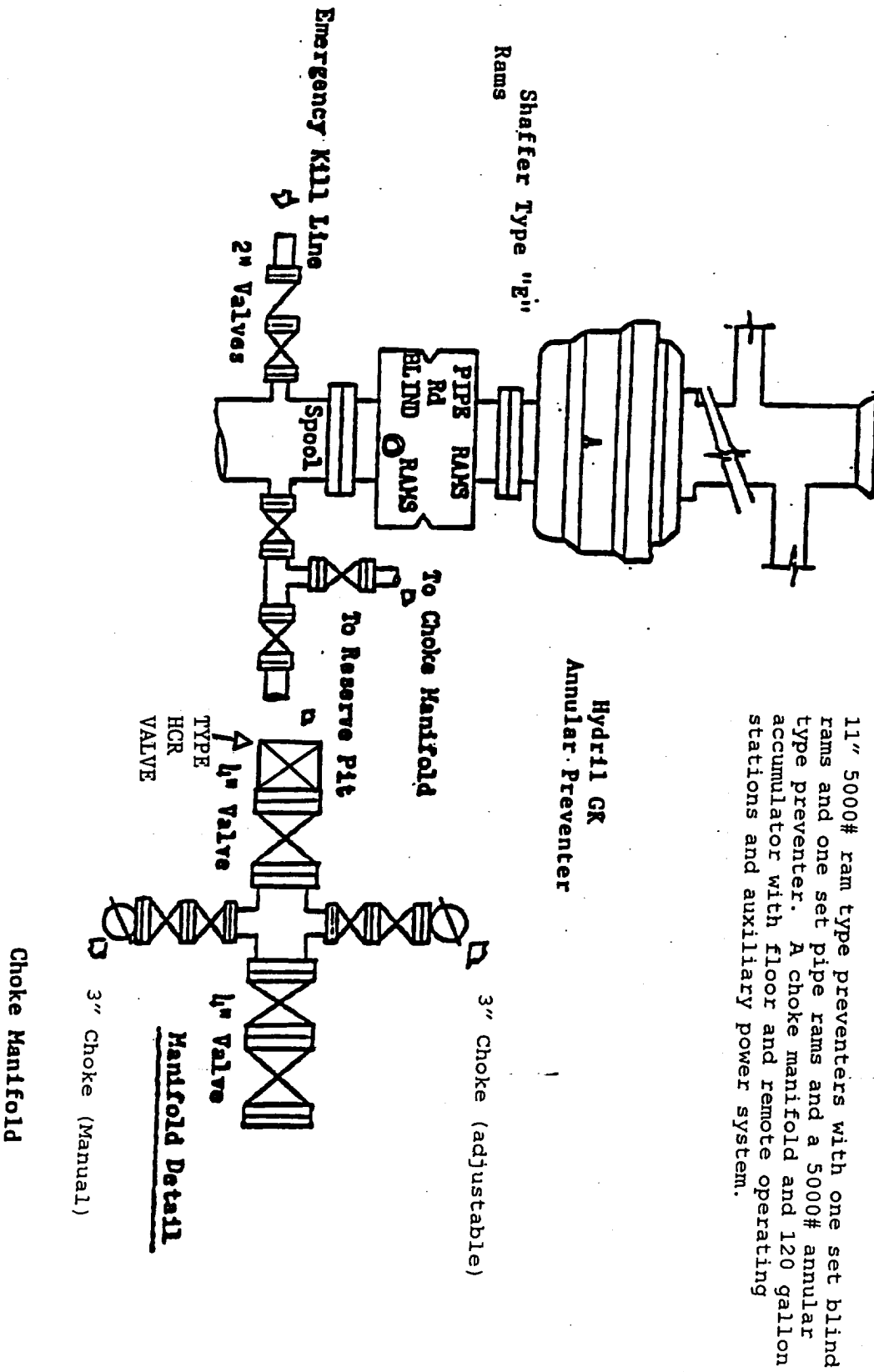
Attachments



EXHIBIT A



**BLOWOUT PREVENTOR SCHEME**



## MULTI-POINT SURFACE USE AND OPERATIONS PLAN

OXY USA WTP Limited Partnership  
OXY Hopsing Federal #2  
Eddy County, New Mexico  
Lease No. NM0455265

This plan is submitted with the Application for Permit to Drill the above described well. The purpose of the plan is to identify the location of the proposed well, the proposed construction activities and operations plan, the magnitude of necessary surface disturbance involved and the procedures to be followed in rehabilitating the surface after completion of the operation so that a complete appraisal may be made of the environmental effects associated with the operation.

The well, and work area have been staked by a registered New Mexico land surveyor. Geo-Marine Inc. has been engaged to make an archaeological reconnaissance of the work area. Their findings concerning cultural resources will be reported to the Bureau of Land Management.

### 1. Existing Roads

A copy of a USGS "Red Lake, SE New Mexico" quadrangle map is attached showing the proposed location. The well location is spotted on this map, which also shows the existing road system. Exhibit B.

Directions to location:

From the junction of CR 237 and CR 208. Go southwest on existing road approximately 1.5 miles to a point which lies approximately 322' from the southeast corner of the pad of proposed well location.

### 2. Planned Access Road

- A. A new access road will be built. The access road will run approximately 322' west from an existing trail road to the location. Exhibit B.
- B. Surfacing material: Six inches of caliche and water, compacted and graded.
- C. Maximum Grade: Less than 3%.
- D. Turnouts: None needed.
- E. Drainage Design: N/A
- F. Culverts: None needed.
- G. Cuts and Fills: Leveling the location will require minimal cuts or fills.
- H. Gates or Cattleguards: None required.

### 3. Existing wells within a one mile radius of the proposed development well are shown on Exhibit C.

4. Location of Existing and/or Proposed Facilities

- A. If the well is productive, production facilities will be constructed on the well pad. The facility will consist of a stack pack, one 300 bbl oil tank and one 300 bbl fiberglass water tank. All permanent above ground facilities will be painted in accordance with the BLM's painting guidelines simulating the color of sandstone brown.
- B. All site security guidelines identified in 43 CFR 3162.7 regulations will be adhered to and a site security plan will be submitted for the OXY Hopsing Federal #2 tank battery. All product lines entering and leaving hydrocarbon storage tanks will be effectively sealed.

5. Location and Type of Water Supply

Fresh water and brine water will be used to drill this well. It will be purchased from a supply in Loco Hills and transported to the well site.

6. Source of Construction Materials

Caliche for surfacing the well pad will be obtained from a Federal pit located in Section 12, T20S, R27E, Eddy County, New Mexico.

7. Method of Handling Waste Disposal

- A. Drill Cuttings will be disposed of in drilling pits.
- B. Drilling fluids will be allowed to evaporate in the drilling pits until pits are dry.
- C. Water produced during tests will be disposed of in the drilling pits. Oil produced during tests will be stored in test tanks until sold.
- D. Current laws and regulations pertaining to the disposal of human waste will be complied with.
- E. Trash, waste paper, garbage and junk will be collected in steel trash bins and removed after drilling and completion operations are completed. All waste material will be contained to prevent scattering by the wind.
- F. All trash and debris will be removed from the wellsite within 30 days after finishing drilling and/or completion operations.

8. Ancillary Facilities

- A. None needed.

9. Wellsite Layout

- A. The location and dimensions of the well pad, mud pits, reserve pit and location of major rig components are shown on the well site layout sketch. The V-door will be to the east and the pits to the north. Exhibit D.
- B. Leveling of the wellsite will be required with minimal cuts or fills anticipated.

- C. The reserve pit will be plastic lined.
- D. While constructing the pits and material is encountered at a depth which would not allow the pits to meet the BLM stipulations without blasting, OXY requests a variance. There will be an adequate amount of material to reclaim the pit per the stipulations.
- E. The pad and pit area have been staked and flagged.

10. Plans for Restoration of the Surface

- A. After completion of drilling and/or completion operations, all equipment and other materials not needed for operations will be removed.
- B. Pits will be filled and location cleaned of all trash and junk to leave the well site in as aesthetically pleasing condition as possible. Any plastic material used to line the pits or sumps will be cut off below ground level as far as possible and disposed of before the pits are covered. All unattended pits containing liquid will be fenced and the liquid portion allowed to evaporate before the pits are broken and backfilled.
- C. After abandonment of the well, surface restoration will be in accordance with the land owner. This will be accomplished as expeditiously as possible. Barring unforeseen problems, all pits will be filled and leveled within 90 days after abandonment.

11. Surface Ownership

The wellsite is on federal owned surface. The surface is leased to: David Schepke, P.O. Box 3083, Carlsbad, NM 88221. They will be notified of our intention to drill prior to any activity.

12. Other Information

- A. Topography: The location is a flat plain. GL elevation is 3331'.
- B. Soil: Sandy clay loams.
- C. Flora and Fauna: The vegetative cover is generally sparse consisting of mesquite, yucca, shinnery oak, sandsage and perennial native range grasses. Wildlife in the area is also sparse consisting of coyotes, rabbits, rodents, reptiles, dove and quail.
- D. Ponds and Streams: There are no rivers, streams, lakes or ponds in the area.
- E. Residences and Other Structures: There are no occupied dwellings within a 3 mile radius of the location.
- F. Archaeological, Historical and Cultural Sites: Cultural resources have been recorded in the area. Geo-Marine Inc. will be engaged to make an archaeological reconnaissance of the work area.
- G. Land Use: Cattle ranching.

Multi-Point Surface Use and Operations Plan  
OXY Hopsing Federal #2  
Page 4

- H. The well site, if a producer, will be maintained and kept clean of all trash and litter which detracts from the surrounding environment. Equipment will be maintained in accordance with good operating practice.
- I. After the wellsite is cleaned and pits and sumps backfilled, any obstruction to the natural drainage will be corrected by ditching or terracing. All disturbed areas, including any access road no longer needed, will be ripped. Those areas will be reseeded with grass if, in the opinion of the land owner, it is required.

13. Operator's Representatives and Certification

The field representative responsible for assuring compliance with the approved surface use and operations plan are as follows:

John Erickson  
Production Coordinator  
P.O. Box 69  
Hobbs, New Mexico 88240  
Office Phone: 505-393-2174  
Cellular: 505-390-6426

Joe Fleming  
Drilling Coordinator  
P.O. Box 50250  
Midland, TX 79710-0250  
Office Phone: 915-685-5858

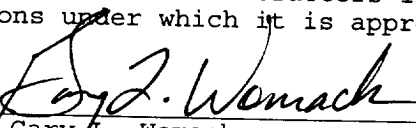
Calvin C. (Dusty) Weaver  
Operation Specialist  
P.O. Box 2000  
Levelland, TX 79336  
Office Phone: 806-229-9467  
Cellular: 806-893-3067

Terry Asel  
Operation Specialist  
1017 W. Stanolind Rd.  
Hobbs, NM 88240  
Office Phone: 505-397-8217  
Cellular: 505-631-0393

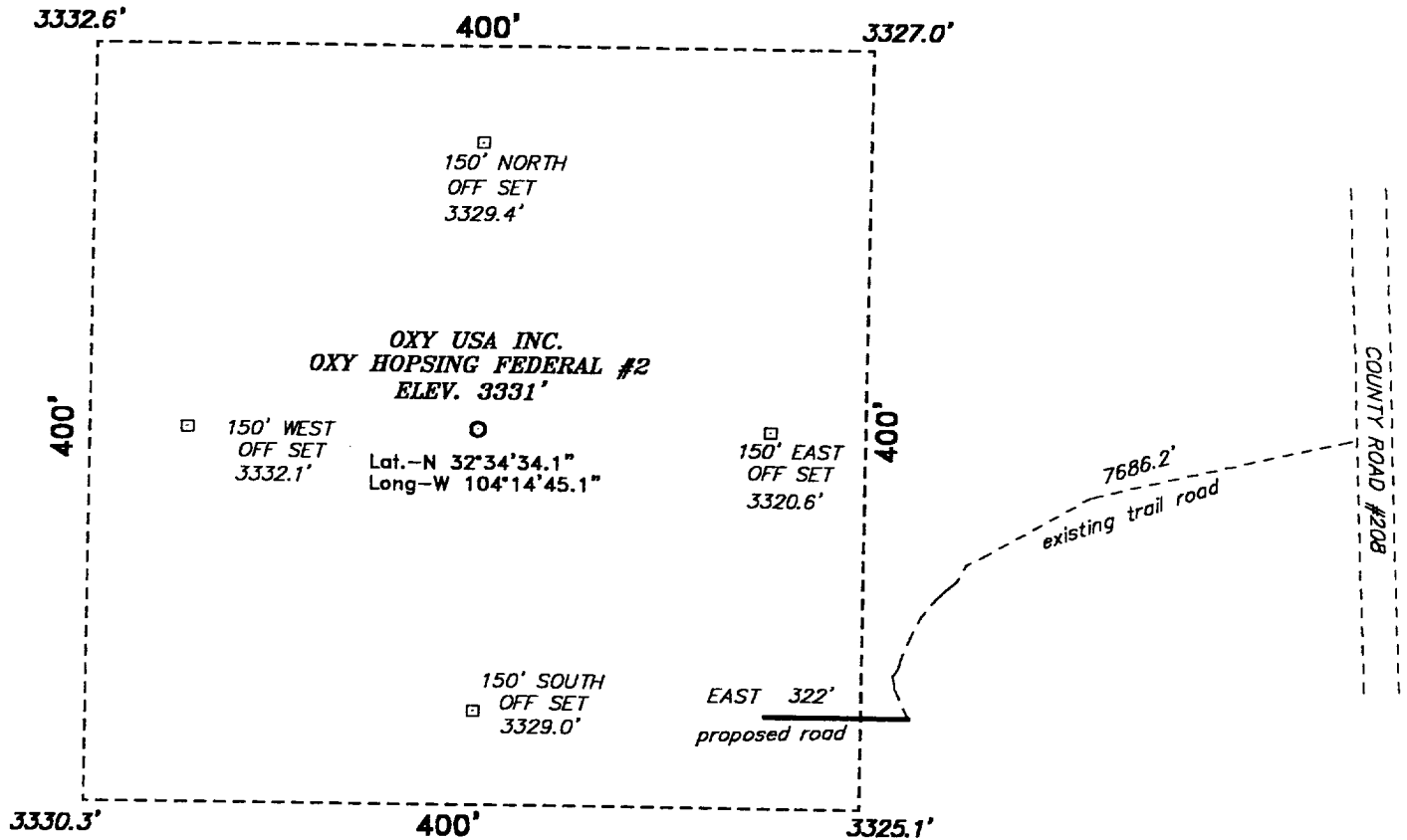
I hereby certify that I, or persons under my direct supervision, have inspected the proposed drill site and access route; that I am familiar with the conditions which presently exist; that the statements made in this plan are, to the best of my knowledge, true and correct; and, that the work associated with the operations proposed herein will be performed by OXY USA WTP Limited Partnership and its contractors and sub-contractors in conformity with this plan and the terms and conditions under which it is approved.

DATE

7/24/01

  
\_\_\_\_\_  
Gary L. Womack  
Operations Engineer  
915-685-5772  
South Permian Asset Team  
OXY USA WTP Limited Partnership

**SECTION 14, TOWNSHIP 20 SOUTH, RANGE 27 EAST, N.M.P.M.,  
EDDY COUNTY, NEW MEXICO.**



**Directions to Location:**

FROM THE JUNCTION OF CO. ROAD #237 AND CO. ROADS 208, GO SOUTH ON 208 APPROX 1.5 MILE TO A LEASE ROAD TO THE WEST, GO WEST 1.1 MILES TO THE PROPOSED LEASE ROAD TO LOCATION.

**BASIN SURVEYS** P.O. BOX 1786-HOBBS, NEW MEXICO

W.O. Number: 1704

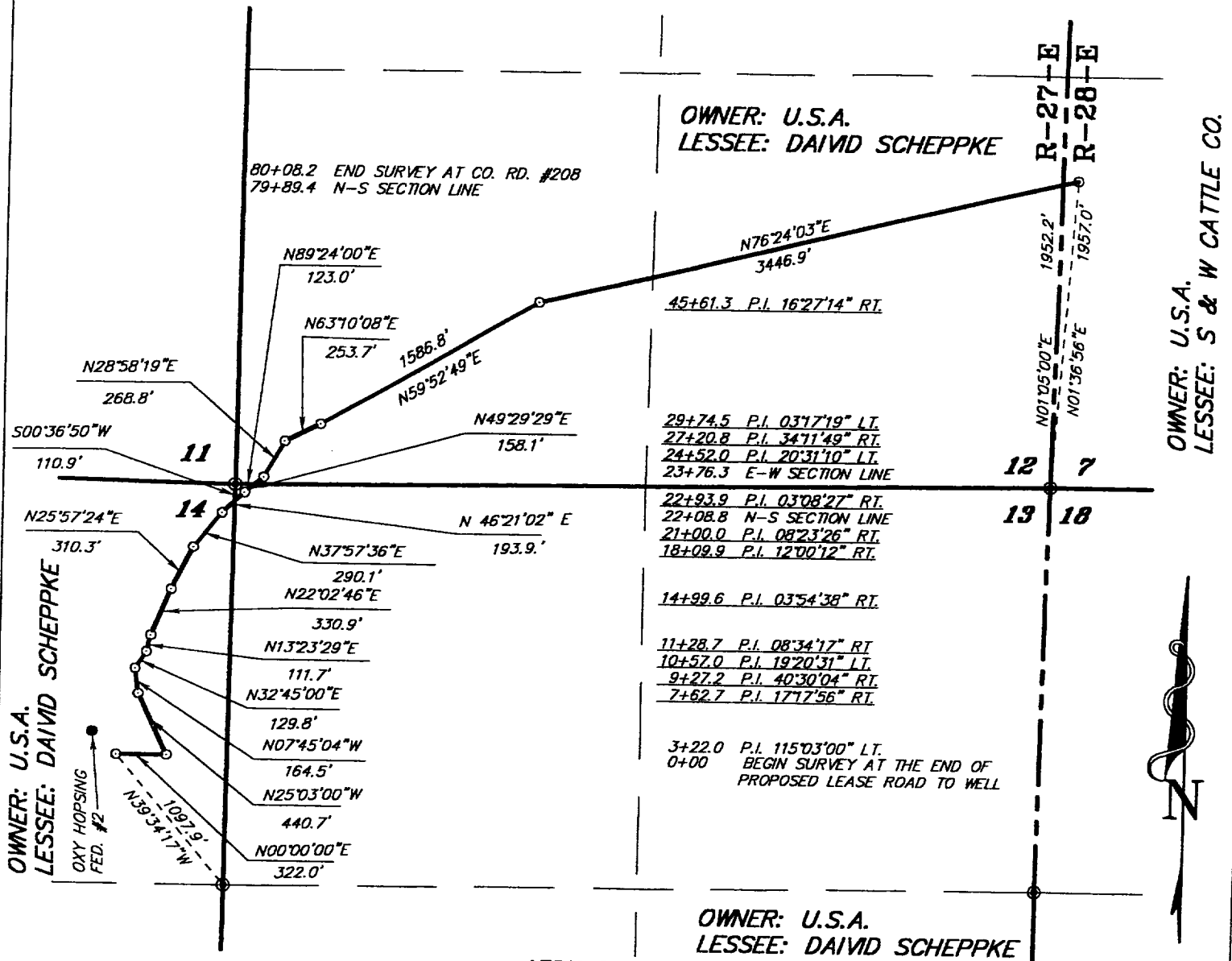
Drawn By: **JAMES PRESLEY**

**OXY USA INC.**

REF: OXY HOPSING FEDERAL #2 / Well Pad Topo

THE OXY HOPSING FEDERAL No. 2 LOCATED 1650' FROM THE NORTH LINE AND 860' FROM THE EAST LINE OF SECTION 14, TOWNSHIP 20 SOUTH, RANGE 27 EAST, N.M.P.M., EDDY COUNTY, NEW MEXICO.

**SECTIONS 12,13,&14, TOWNSHIP 20 SOUTH, RANGE 27 EAST, N.M.P.M.,  
EDDY COUNTY, NEW MEXICO.**



**LEGAL DESCRIPTION**

A STRIP OF LAND 50.0 FEET WIDE, LOCATED IN SECTION 21, TOWNSHIP 17 SOUTH, RANGE 32 EAST, N.M.P.M., LEA COUNTY, NEW MEXICO AND BEING 25.0 FEET LEFT AND RIGHT OF THE ABOVE PLATTED CENTERLINE SURVEY.

SEC. 14 2208.8 FEET = 133.87 RODS = 0.42 MILES

SEC. 13 167.5 FEET = 10.15 RODS = 0.03 MILES

SEC. 12 5613.1 FEET = 340.19 RODS = 1.06 MILES

SEC. 7 18.8 FEET = 1.14 RODS = 0.01 MILES

8008.2 FEET = 485.35 RODS = 1.52 MILES

I HEREBY CERTIFY THAT THIS PLAT WAS PREPARED FROM FIELD NOTES OF AN ACTUAL SURVEY AND MEETS OR EXCEEDS ALL REQUIREMENTS FOR LAND SURVEYS AS SPECIFIED BY THIS STATE.

GARY L. JONES N.M.P.S. No. 19977  
TEXAS P.L.S. No. 5074

**Basin Surveys** P.O. BOX 1786—HOBBS, NEW MEXICO

W.O. Number: 1704

Drawn By: James Presley

Date: 07/10/01

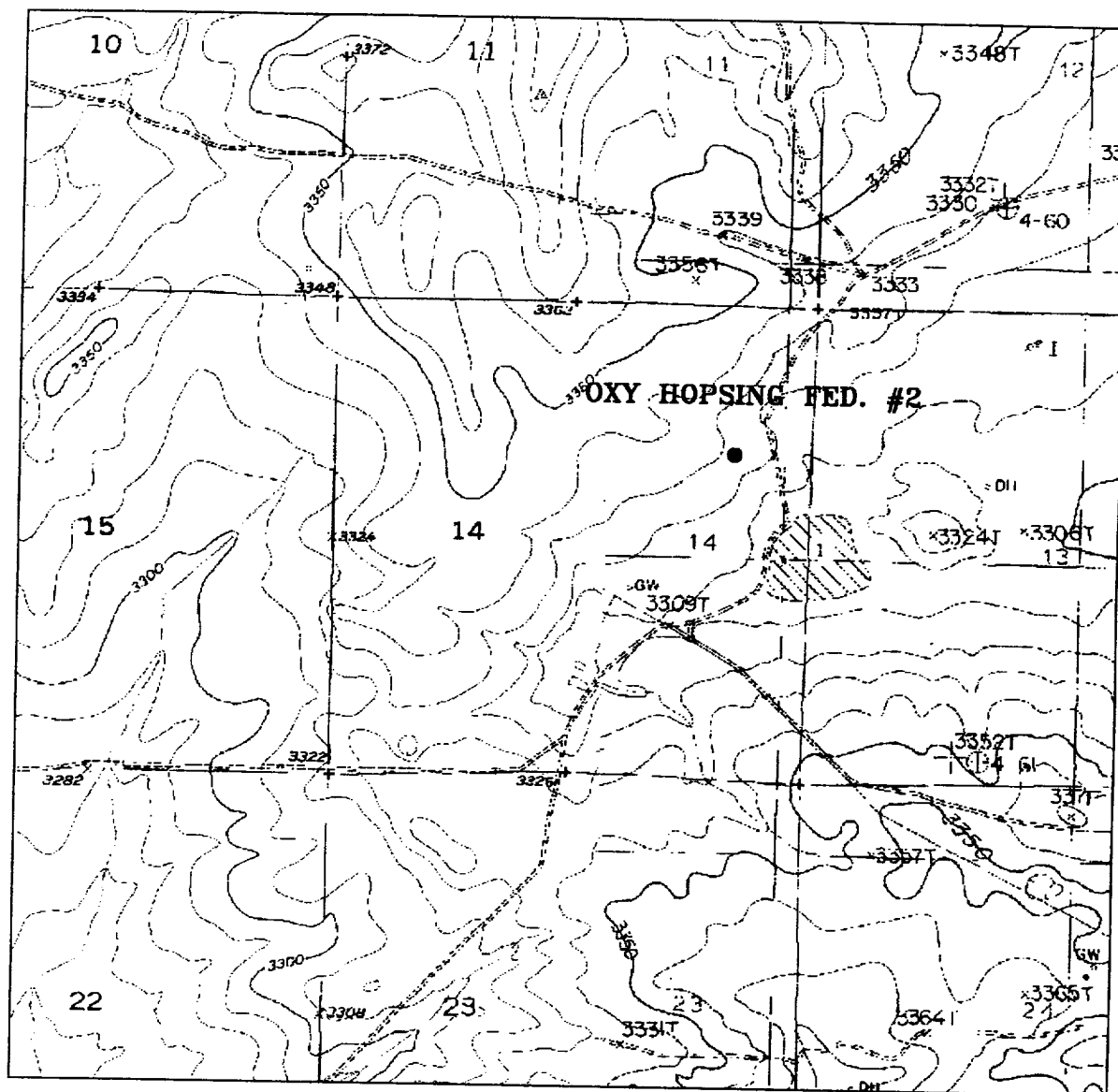
1000 0 1000 2000 FEET

**OXY USA**

REF: PROPOSED ROAD TO QXY HOPSING FEDERAL #2

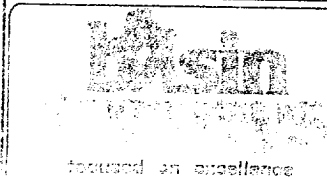
A ROAD CROSSING U.S.A. LAND IN  
SECTIONS 12,13,&14, TOWNSHIP 20 SOUTH, RANGE 27 EAST,  
N.M.P.M., EDDY COUNTY, NEW MEXICO.





### OXY HOPSING FEDERAL #2

Located at 1650' FNL and 860' FEL  
 Section 14, Township 20 South, Range 27 East,  
 N.M.P.M., Eddy County, New Mexico.



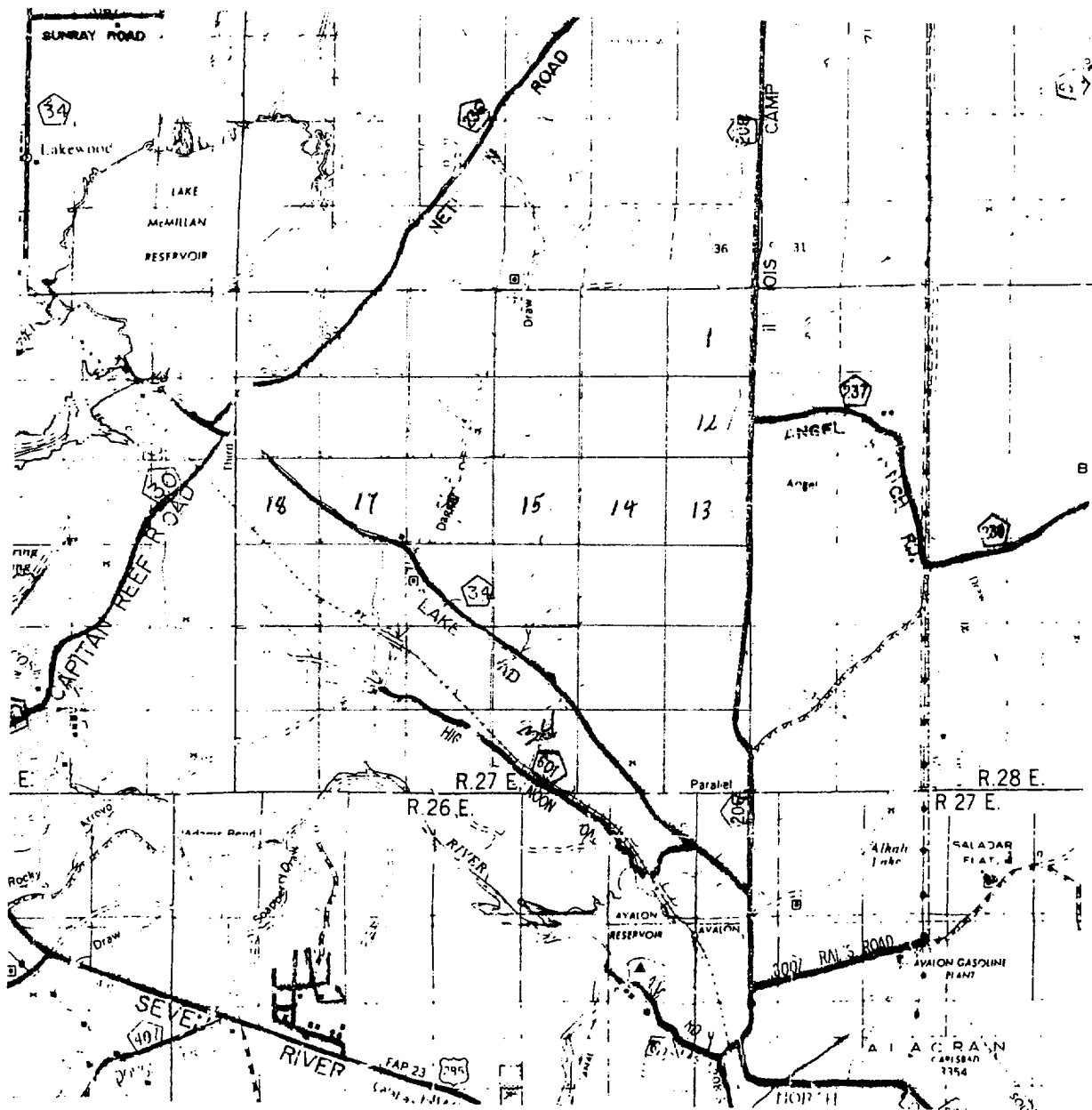
P.O. Box 1786  
 1120 N. West County Rd.  
 Hobbs, New Mexico 88241  
 (505) 393-7316 - Office  
 (505) 392-3074 - Fax

W.O. Number: 1704AA - JLP #1

Survey Date: 07/16/01

Scale: 1" = 2000'

**OXY USA INC.**



**OXY HOPSING FEDERAL #2**  
 Located at 1650' FNL and 860' FEL  
 Section 14, Township 20 South, Range 27 East,  
 N.M.P.M., Eddy County, New Mexico.

**basin**  
**surveys**  
 focused on excellence  
 in the oilfield

P.O. Box 1786  
 1120 N. West County Rd.  
 Hobbs, New Mexico 88241  
 (505) 393-7316 - Office  
 (505) 392-3074 - Fax  
 basin-surveys.com

W.O. Number: 1704AA - JLP #1

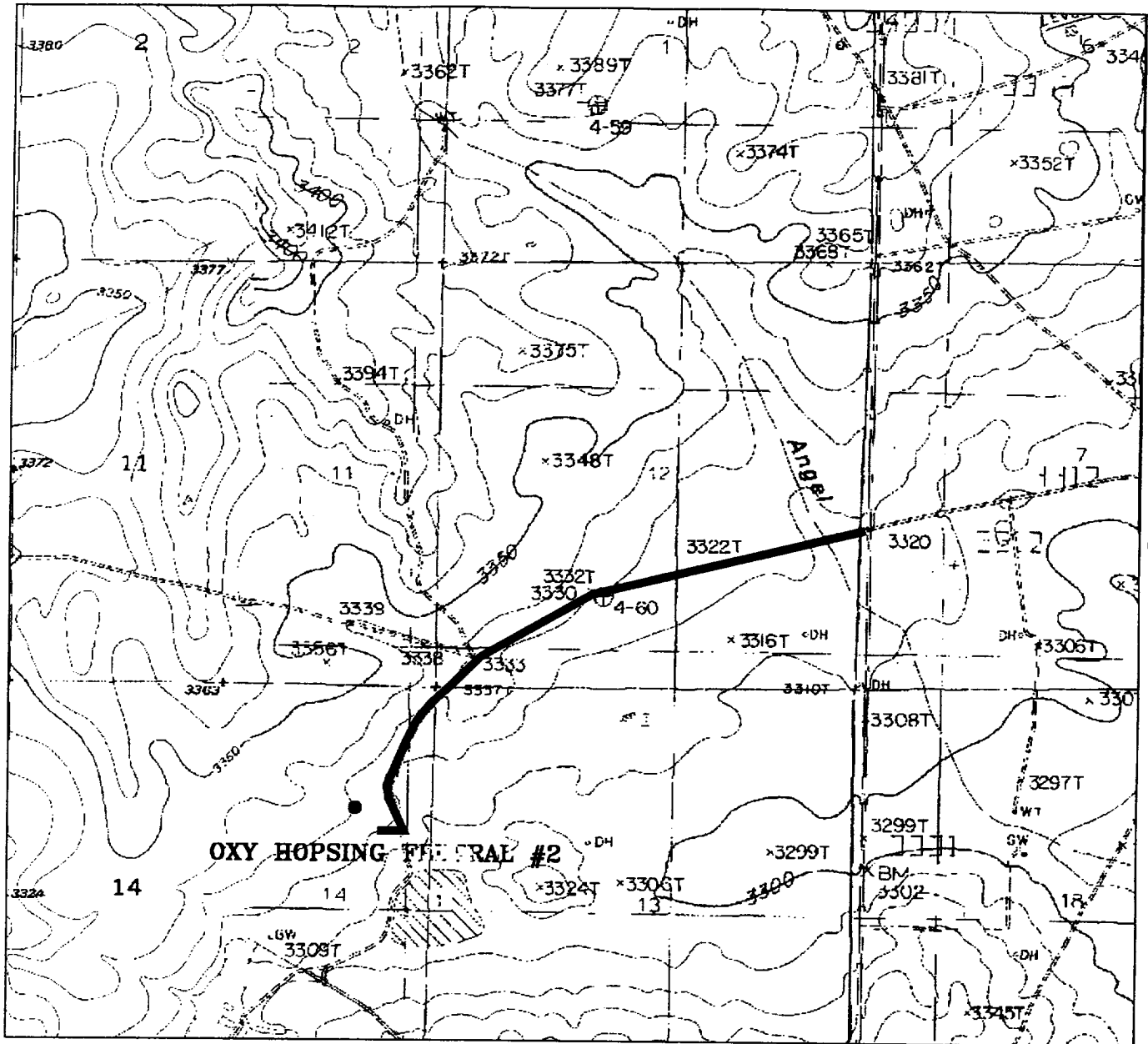
Survey Date: 07/16/01

Scale: 1" = 2000'

Date: 07/18/01

**OXY USA INC.**

EXHIBIT B



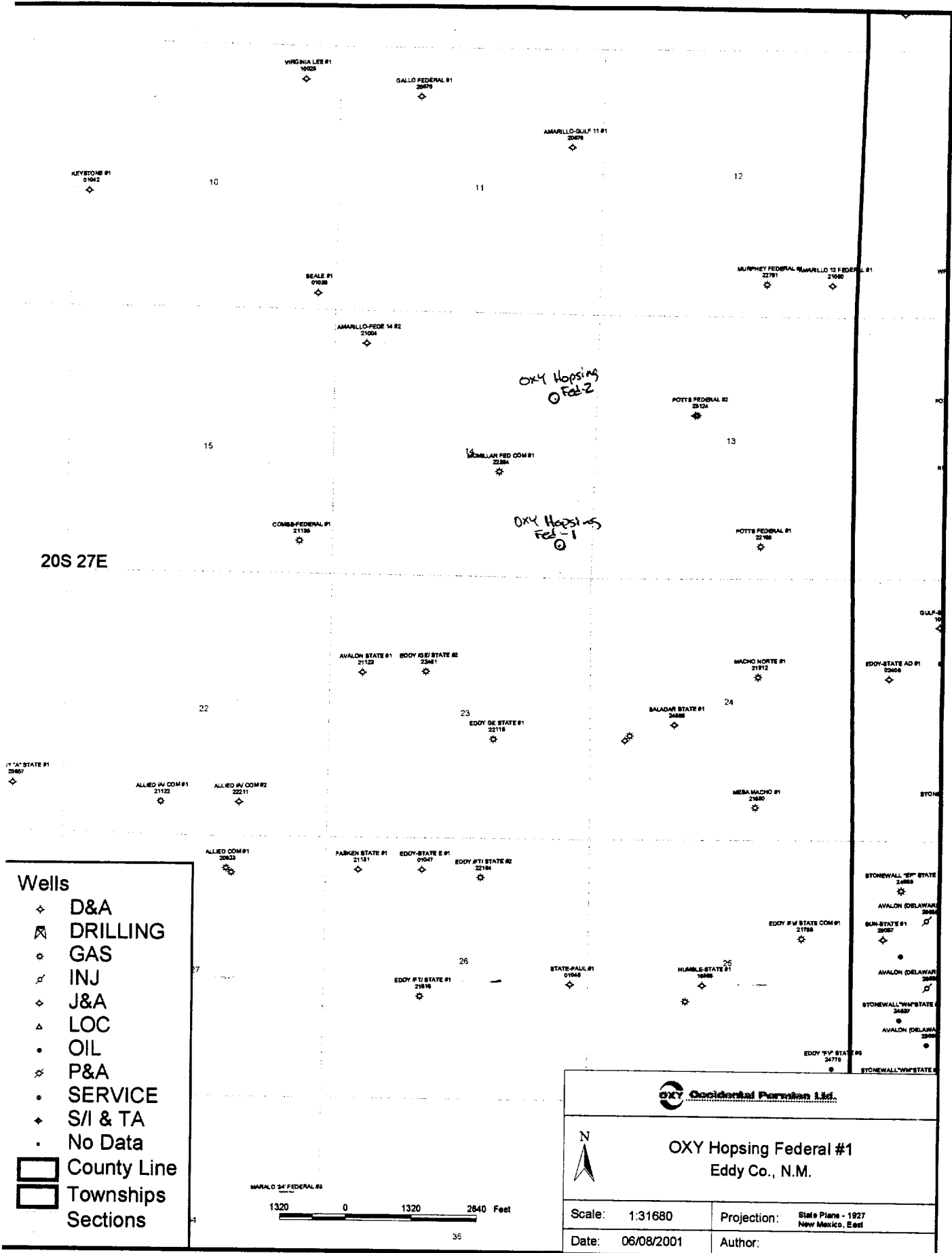
**PROPOSED ROAD TO OXY- OXY HOPSING FEDERAL #2**  
 Sections 13&14, Township 20 South, Range 27 East,  
 N.M.P.M., Eddy County, New Mexico.

**Basin**  
 focused on excellence  
 P.O. Box 1786  
 1120 N. West County Rd.  
 Hobbs, New Mexico 88241  
 (505) 393-7316 - Office  
 (505) 392-3074 - Fax  
 basin surveys.com

W.O. Number:	1704T - JLP #1
Survey Date:	07/16/01
Scale:	1" = 2000'
Date:	07/19/01

**OXY USA**

# EXHIBIT C



270'

200'

45'

45'

Pad to lay down drill pipe

30'

30'

30'

30'

Casing

Pump/Race

10'

30'

150'

45' x 115' Bottom

45' x 115' Bottom

45' x 145' Bottom

Mud Pump

125'

Wt

Wt

Pencil Piled

Down

Down

Trailer House

270'

234'

United States Department of the Interior  
Bureau of Land Management  
Roswell District  
2909 W. Second Street  
Roswell, New Mexico 88202

Attention: Armando A. Lopez

RE: OXY Hopsing Federal No. 2  
Section 14, T20S-R27E  
Eddy County, New Mexico

**STATEMENT ACCEPTING RESPONSIBILITY FOR OPERATIONS**

**OPERATOR NAME:** OXY USA WTP Limited Partnership  
**ADDRESS:** P. O. Box 50250  
Midland, Texas 79710

**The undersigned accepts all applicable terms, conditions, stipulations, and restrictions concerning operations conducted on the leased land or portion thereof, as described below:**

**LEASE NO.:** NM-0455265  
**LEGAL DESCRIPTION:** 1650' FNL and 860' FEL Section 14,  
T20S-R27E  
Eddy County, New Mexico  
**FORMATIONS:** All  
**BOND COVERAGE:** Nationwide  
**BLM BOND FILE NO.:** ES 0136

**OXY USA WTP Limited Partnership**

**AUTHORIZED SIGNATURE:**

BY:   
David R. Evans

**TITLE:** Landman Advisor  
**DATE:** July 24, 2001

cc: David Stewart