

N. M. O. C. COPY
UNITED STATES
DEPARTMENT OF THE INTERIOR
GEOLOGICAL SURVEYSUBMIT IN TRIPlicate*
(Other instructions on
reverse side)Form approved
Budget Bureau No. 42-R1425.

30-015-21620

5. LEASE DESIGNATION AND SERIAL NO.

NM 23269

6. IF INDIAN, ALLOTTEE OR TRIBE NAME

7. UNIT AGREEMENT NAME

8. FARM OR LEASE NAME

ROBINIA DRAW

9. WELL NO.

1

10. FIELD AND POOL, OR WILDCAT

WILDCAT

11. SEC., T., R., M., OR BLK.
AND SURVEY OR AREA

Sec. 3, T-23S, R-24E

12. COUNTY OR PARISH

13. STATE

Eddy

New Mexico

1a. TYPE OF WORK

DRILL ☒DEEPEN ☐PLUG BACK ☐

b. TYPE OF WELL

OIL
WELL ☐GAS
WELL ☒

OTHER

SINGLE
ZONE ☐MULTIPLE
ZONE ☐

2. NAME OF OPERATOR

MONSANTO COMPANY

3. ADDRESS OF OPERATOR

Production Dept., 321 West Texas, Midland, Texas 79701

4. LOCATION OF WELL (Report location clearly and in accordance with any State requirements.)*

At surface

1844' FSL and 2140' FWL

At proposed prod. zone

14. DISTANCE IN MILES AND DIRECTION FROM NEAREST TOWN OR POST OFFICE*

20 Miles SW of Carlsbad, New Mexico

15. DISTANCE FROM PROPOSED*

LOCATION TO NEAREST
PROPERTY OR LEASE LINE, FT.
(Also to nearest drig. unit line, if any)

1980

16. NO. OF ACRES IN LEASE

634.28

17. NO. OF ACRES ASSIGNED
TO THIS WELL

320

18. DISTANCE FROM PROPOSED LOCATION*

TO NEAREST WELL, DRILLING, COMPLETED,
OR APPLIED FOR, ON THIS LEASE, FT.

None

19. PROPOSED DEPTH

10,500'

20. ROTARY OR CABLE TOOLS

Rotary

21. ELEVATIONS (Show whether DF, RT, GR, etc.)

Will furnish later

22. APPROX. DATE WORK WILL START*

August 12, 1975

23.

PROPOSED CASING AND CEMENTING PROGRAM

SIZE OF HOLE	SIZE OF CASING	WEIGHT PER FOOT	SETTING DEPTH	QUANTITY OF CEMENT
17 1/2"	13 3/8"	48#	500'	650 Sx. Circulated
12 1/2"	9 5/8"	36#	2600'	1150 Sx. Circulated

RECEIVED

SEP 4 1975

O. C. C.

ARTESIA, OFFICE

RECEIVED

JUL 24 1975

U. S. GEOLOGICAL SURVEY
ARTESIA, NEW MEXICO

Drill 17 1/2" hole to 500'; Set 13 3/8" Csg & Cement to surface.

Drill 12 1/2" hole to 2600'; Set 9 5/8" Csg & cement to surface.

Drill 8 3/4" hole to 10,500' and log.

If production is indicated, set 5 1/2" Csg & cement.

Perforate & treat if necessary.

BOP Series 1500 Double Hydraulic w/ Series 900 Annular preventer.

IN ABOVE SPACE DESCRIBE PROPOSED PROGRAM: If proposal is to deepen or plug back, give data on present productive zone and proposed new productive zone. If proposal is to drill or deepen directionally, give pertinent data on subsurface locations and measured and true vertical depths. Give blowout preventer program, if any.

24.

SIGNED

W. M. Schell

TITLE Regional Production Mgr.

DATE 7/23/75

(This space for Federal or State office use)

PERMIT NO.

SUBJECT TO ATTACHED DEEP WELL CONTROL

REQUIREMENTS DATED

JUN 22 1973

APPROVAL DATE

DECLARED WATER BASIN

13 3/8"

9 5/8"

TITLE

CEMENT BEHIND THE
CASING MUST BE CIRCULATED

DATE

NOTIFY USGS IN SUFFICIENT TIME TO
WITNESS CEMENTING THE CASING.THIS APPROVAL IS RESCINDED IF OPERATIONS
ARE NOT COMMENCED WITHIN 3 MONTHS.
EXPIRES DEC 3 - 1975

*See Instructions On Reverse Side

NEW MEXICO OIL CONSERVATION COMMISSION
WELL LOCATION AND ACREAGE DEDICATION PLAT

Form C-102
Supersedes C-128
Effective 1-1-65

All distances must be from the outer boundaries of the Section.

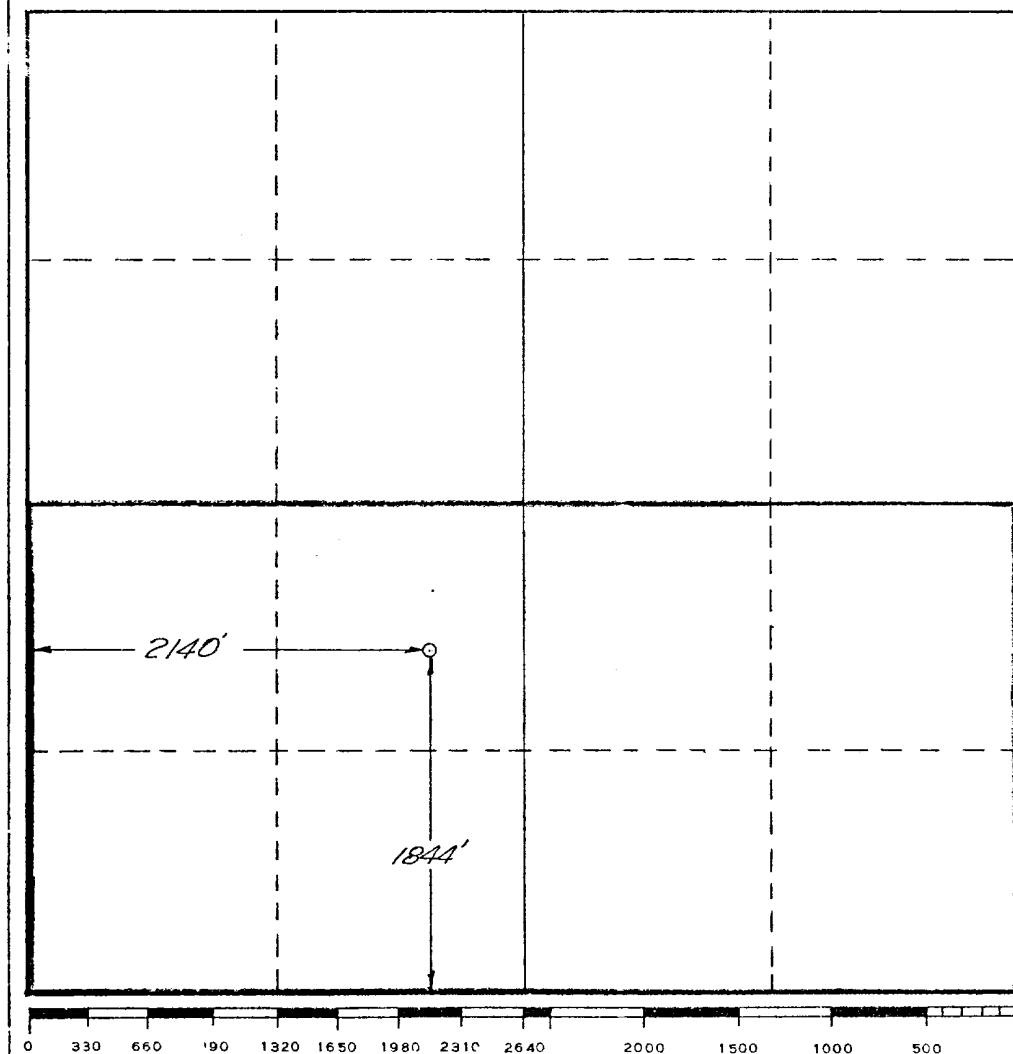
Operator MONSANTO COMPANY		Lease ROBINIA DRAW		Well No. 1
Unit Letter K	Section 3	Township 23-S	Range 24-E	County EDDY
Actual Footage Location of Well: 1844 feet from the South line and 2140 feet from the West line				
Ground Level Elev. Will furnish later.	Producing Formation Morrow		Pool Wildcat	Dedicated Acreage: 320 Acres

1. Outline the acreage dedicated to the subject well by colored pencil or hachure marks on the plat below.
2. If more than one lease is dedicated to the well, outline each and identify the ownership thereof (both as to working interest and royalty).
3. If more than one lease of different ownership is dedicated to the well, have the interests of all owners been consolidated by communitization, unitization, force-pooling, etc?

☐ Yes ☒ No If answer is "yes," type of consolidation _____

If answer is "no," list the owners and tract descriptions which have actually been consolidated. (Use reverse side of this form if necessary.) _____

No allowable will be assigned to the well until all interests have been consolidated (by communitization, unitization, forced-pooling, or otherwise) or until a non-standard unit, eliminating such interests, has been approved by the Commission.



CERTIFICATION

I hereby certify that the information contained herein is true and complete to the best of my knowledge and belief.

E. M. Scholl
Name
E. M. Scholl

Position
Regional Production Mgr.

Company
Monsanto Company

Date
July 23, 1975

I hereby certify that the well location shown on this plat was plotted from field notes of actual surveys made by me or under my supervision, and that the same is true and correct to the best of my knowledge and belief.

July 17, 1975

Date Surveyed
Richard B. Duniven
Registered Professional Engineer
and/or Land Surveyor

Richard B. Duniven
Certificate No.

4882

Monsanto

Monsanto Company
Production Department
321 West Texas
Midland, Texas 79701
Phone: (915) 683-3306

July 23, 1975

United States Geological Survey
Drawer U
Artesia, New Mexico 88210

Attn: Mr. James Knauf

RE: Robinia Draw Well No. 1
Sec. 3, T-23S, R-24E
Eddy County, New Mexico

Gentlemen:

Monsanto Company respectfully submits the following Development Plan for drilling the subject well:

1. Existing Roads: See attachment.
2. Planned Access Roads: See attachment (20' wide).
3. Location of Well: 1844' FSL, 2140' FWL
Sec. 3, T-23S, R-24E
4. Lateral Road; See attachment.
5. Location of tank battery:

If the well is gas productive, a heater and three phase separator will be installed on the southwest corner of the pad with two 200 barrel collection tanks for water and condensate. Pipeline location is not known at this time.

6. Location and type of water supply:

Water will be purchased as near as possible and trucked to location.

Page 2
U.S.G.S.
July 23, 1975
Subj: Robinia Draw Well #1

7. Method of waste disposal:

A burn pit will be used to dispose of combustible materials. Non-combustible materials will be buried at least 24" below the surface of the ground.

8. Location of camps: None

9. Location of air strips: None

10. Location of rig: See attachment.

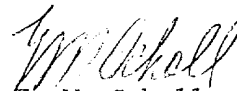
11. Plans for restoration:

Pits will be leveled and land returned as near as possible to original condition.

12. Other - Attached mud program and BOP description. After setting the 9 5/8" casing and before drilling into the Wolfcamp Formation, the blowout preventers and related control equipment will be pressure tested to rated working pressure by an independent service company. Any equipment failing to test satisfactorily shall be repaired or replaced.

Monsanto Company respectfully requests this plan of development be approved. Please advise if you require any additional information.

Yours very truly,



E. M. Scholl

Regional Prod. Manager

EMS:PBW:mm
Encl.

ROBINIA DRAW WELL NO. 1

MUD PROGRAM

Surface:

0 - 500'

Fresh water gel lime slurry.

Intermediate:

500 - 2600'

Fresh water with L.C.M. for seepage if required.

Production:

2600' - T.D.

Fresh water to 7500'; At 7500' mud up with low solids, non-dispersed fresh water system.

Weight and viscosity will be adjusted to contain formation fluids. The water loss will be decreased to 5 c.c. or less before drilling the Morrow.

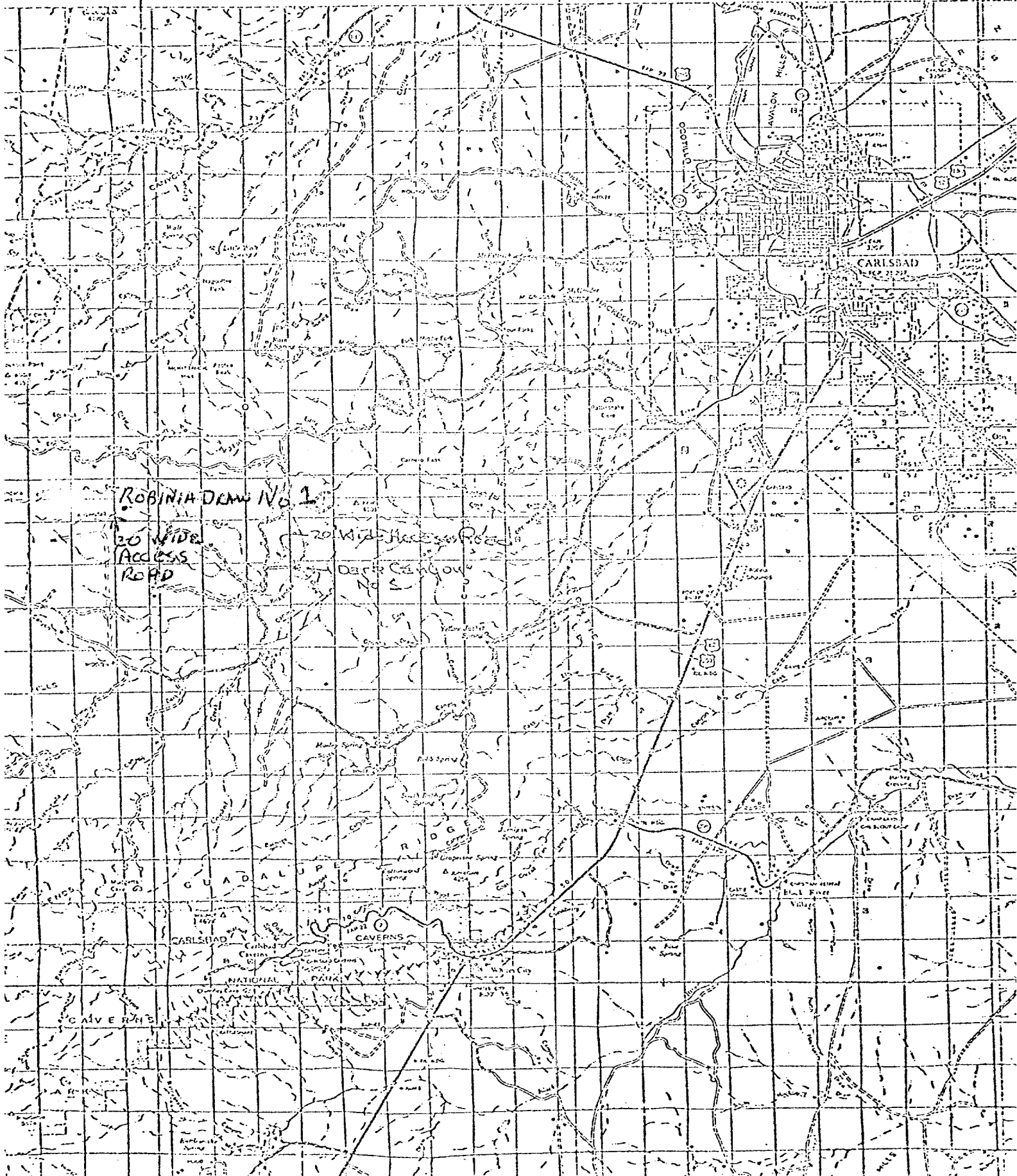
R.24 E.

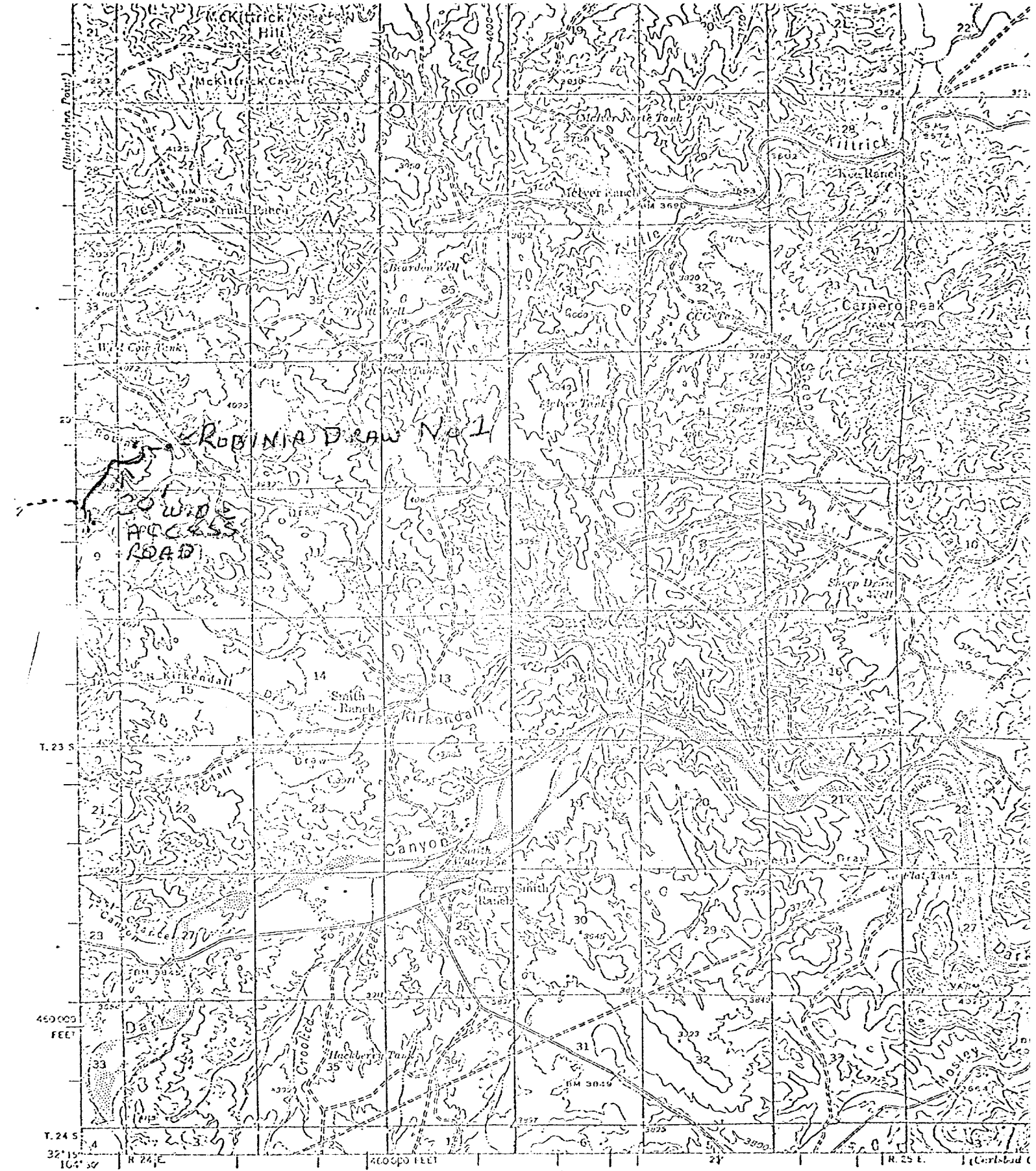
R.25 E.

R.26 E.

R.27 E.

MATCH LINE SEE SHEET 2





dated Covers West

Mapped by the Geological Survey
1943

ROAD CLASSIFICATION
1964

Heavy duty	Light duty
Medium duty	Unimproved dirt

U.S. Route State Route

121°

TRUE NORTH
MAGNETIC NORTH

APPROXIMATE MEAN
DECLINATION, 1943

SCALE

0 1 2 3 4 5 6 7 8 9 10

3000 0 3000 6000

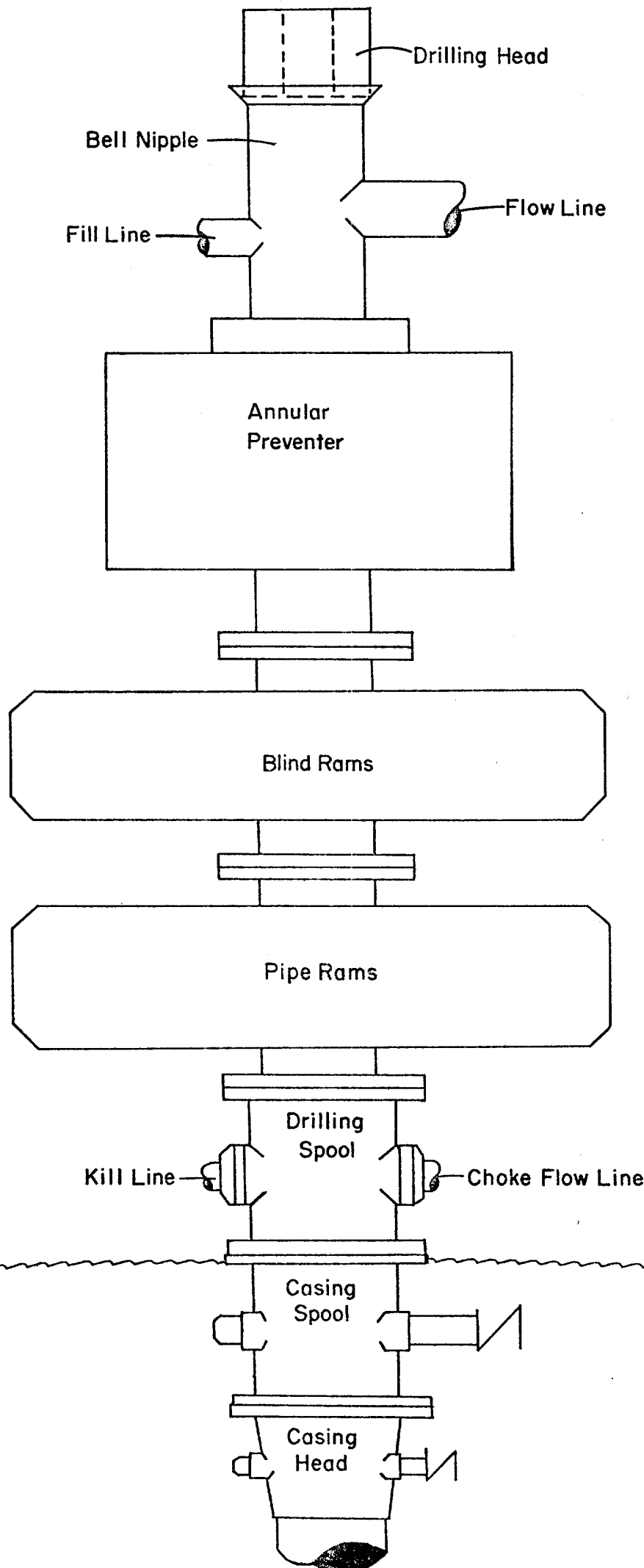
FOOT

CONTOUR IN
DATUM IS M

THIS MAP COMPLIES WITH NAT

THE BLOWOUT PREVENTER STACK

5,000 psi. Working Pressure



Manifold Diagram

