

MIN. OIL CONS. COMMISSION

DRILLER DD

ANTHONY W. H. 8346

UNITED STATES
DEPARTMENT OF THE INTERIOR
BUREAU OF LAND MANAGEMENT

APPLICATION FOR PERMIT TO DRILL OR DEEPEN

1a. TYPE OF WORK

DRILL ☐

DEEPEN ☒ & Re-entry

b. TYPE OF WELL

OIL WELL ☒

GAS WELL ☐

OTHER ☐

SINGLE ZONE ☐

MULTIPLE ZONE ☐

2. NAME OF OPERATOR

Bass Enterprises Production Co.

3. ADDRESS AND TELEPHONE NO.

P. O. Box 2760, Midland, Texas 79702 915-683-2277

4. LOCATION OF WELL (Report location clearly and in accordance with any State requirements.)*

At surface

1980' FSL & 2080' FEL, Section 25, T-22-S, R-28-E
At proposed prod. zone

Same

MAR 18 1994

14. DISTANCE IN MILES AND DIRECTION FROM NEAREST TOWN OR POST OFFICE*

12 miles ESE of Carlsbad, New Mexico

15. DISTANCE FROM PROPOSED*

LOCATION TO NEAREST PROPERTY OR LEASE LINE, FT.
(Also to nearest drig. unit line, if any)

1980'

16. NO. OF ACRES IN LEASE

2394.57

17. NO. OF ACRES ASSIGNED TO THIS WELL

40

18. DISTANCE FROM PROPOSED LOCATION* TO NEAREST WELL, DRILLING, COMPLETED, OR APPLIED FOR, ON THIS LEASE, FT.

100'

19. PROPOSED DEPTH

6700'

20. ROTARY OR CABLE TOOLS

Rotary

21. ELEVATIONS (Show whether DF, RT, GR, etc.)

3167' GR

22. APPROX. DATE WORK WILL START*

Upon Approval

23.

PROPOSED CASING AND CEMENTING PROGRAM

Secretary's Potash

SIZE OF HOLE	GRADE, SIZE OF CASING	WEIGHT PER FOOT	SETTING DEPTH	QUANTITY OF CEMENT
* 12-1/4"	8-5/8" J-55	24#	382'	275 sx circ to surface
** 7-7/8"	5-1/2" K-55	15.5#	6700'	1010 sx circ to surface

* Existing 8-5/8" surface casing set in the Rustler Anhydrite.

** DV Tool to be set at + 2900', cement to be circulated to surface.

Re-entry, drilling procedure, BOP diagram, anticipated tops and surface use plans attached.

This well is within the area of Secretary Order and outside known potash leasing area.

Post ID-1
3-25-94
Re-entry

Certified Mail: P 237 023 531 GGR
12-03-93

IN ABOVE SPACE DESCRIBE PROPOSED PROGRAM: If proposal is to deepen, give data on present productive zone and proposed new productive zone. If proposal is to drill or deepen directionally, give pertinent data on subsurface locations and measured and true vertical depths. Give blowout preventer program, if any.

24.

SIGNED William R. Dannels

TITLE William R. Dannels
Division Drilling Supt.

DATE 12-3-93

(This space for Federal or State office use)

PERMIT NO. _____

APPROVAL DATE _____

Application approval does not warrant or certify that the applicant holds legal or equitable title to those rights in the subject lease which would entitle the applicant to conduct operations thereon.
CONDITIONS OF APPROVAL, IF ANY:

APPROVED BY

Frank Splendore

TITLE

ASSOCIATE

DATE

MAR 07 1994

*See Instructions On Reverse Side

Title 18 U.S.C. Section 1001, makes it a crime for any person knowingly and willfully to make to any department or agency of the United States any false, fictitious or fraudulent statements or representations as to any matter within its jurisdiction.

APPROVAL SUBJECT TO
GENERAL REQUIREMENTS AND
SPECIAL STIPULATIONS
ATTACHED

NEW MEXICO OIL CONSERVATION COMMISSION
WELL LOCATION AND ACREAGE DEDICATION

Form O-11
Supersedes O-128
Effective 1-1-65

All distances must be from the outer boundaries of the Section

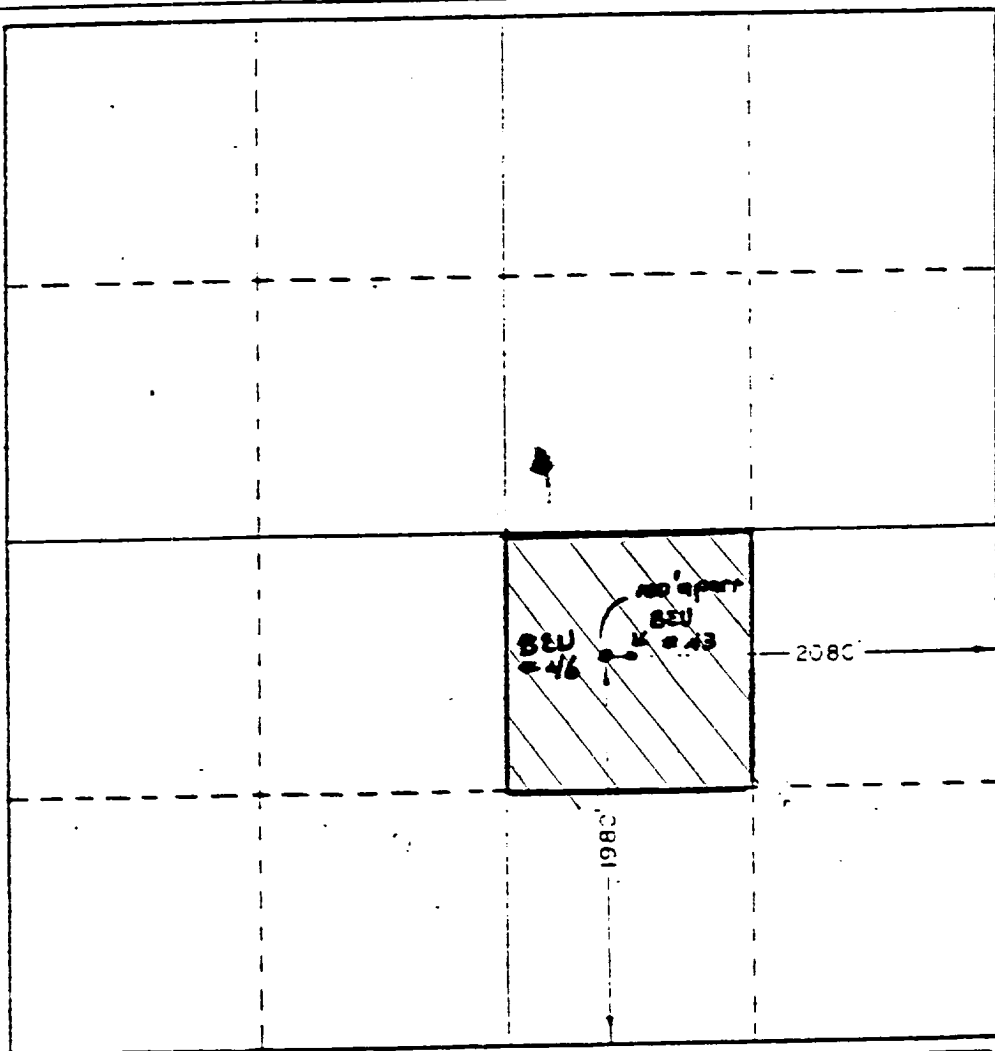
Bass Enterprises Production Company		Big Eddy		46
Section	25	Township	22 South	Range
Range	28 East	County	Eddy	
Actual location of well:				
2080	feet from the	East	1980	feet from the
		South		
Ground surface	Producing formation	E. Herradura Bend (Delaware)		40 acres
3167.2				

1. Outline the acreage dedicated to the subject well by colored pencil or hatchure marks on the plat below
2. If more than one lease is dedicated to the well, outline each and identify the ownership thereof (both as to working interest and royalty).
3. If more than one lease of different ownership is dedicated to the well, have the interests of all owners been consolidated by communitization, unitization, force-pooling, etc?

☐ Yes ☐ No If answer is "yes," type of consolidation _____

If answer is "no," list the owners and tract descriptions which have actually been consolidated (if so, reverse side of this form if necessary.) _____

No allowable will be assigned to the well until all interests have been consolidated (by communitization, unitization, forced-pooling, or otherwise) or until a non-standard unit, eliminating such interests, has been approved by the Commission.



CERTIFICATION

I hereby certify that the information contained herein is true and complete to the best of my knowledge and belief

William R. Dannels

William R. Dannels

Division Drilling Supt.

Bass Enterprises Production

12-3-93

I hereby certify that the well location shown on this plat was plotted from field notes of actual surveys made by me or under my supervision and that the same is true and correct to the best of my knowledge and belief

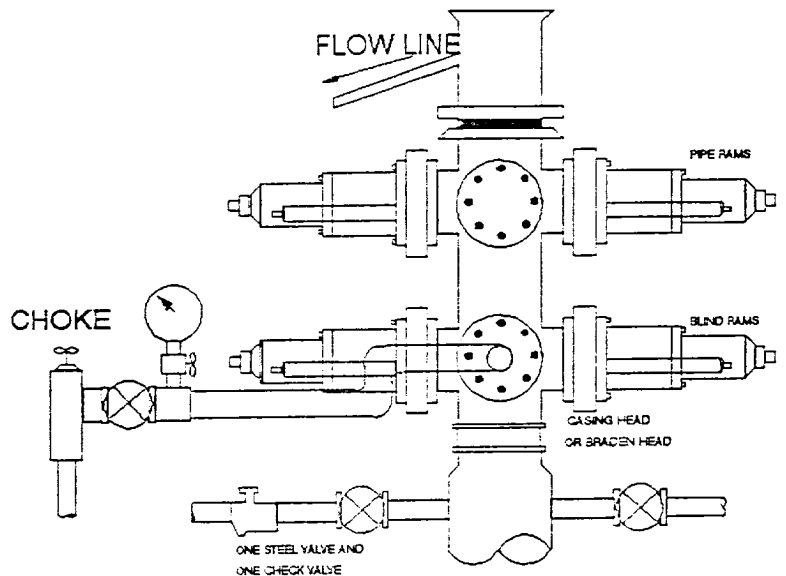
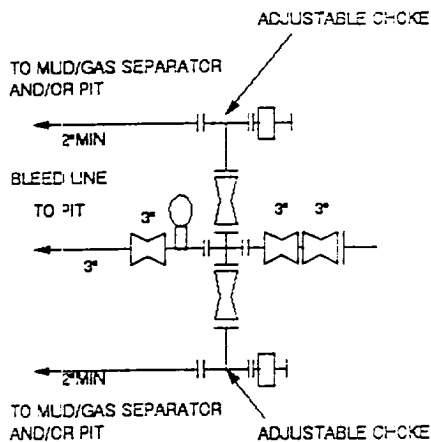
November 6, 1975

676

John W. West

0 320 640 960 1280 1600 1920 2240 2560 2880 3200

3000 PSI WP



THE FOLLOWING CONSTITUTE MINIMUM BLOWOUT PREVENTER REQUIREMENTS

- A. One double gate blowout preventer with lower rams for pipe and upper rams blind, all hydraulically controlled.
- B. Opening on preventers between rams to be flanged, studded or clamped and at least two inches in diameter.
- C. All connections from operating manifold to preventers to be all steel hose or tube a minimum of one inch in diameter.
- D. The available closing pressure shall be at least 15% in excess of that required with sufficient volume to operate (close, open, and re-close) the preventers.
- E. All connections to and from preventers to have a pressure rating equivalent to that of the BOP's.
- F. Manual controls to be installed before drilling cement plug.
- G. Valve to control flow through drill pipe to be located on rig floor.
- H. Choke may be either positive or adjustable. Choke spool may be used between rams.