

UNITED STATES
DEPARTMENT OF THE INTERIOR
GEOLOGICAL SURVEY

APPLICATION FOR PERMIT TO DRILL, DEEPEN, OR PLUG BACK

1a. TYPE OF WORK

DRILL ☒DEEPEN ☐PLUG BACK ☐

b. TYPE OF WELL

OIL
WELL ☒GAS
WELL ☐OTHER ☐SINGLE
ZONE ☒MULTIPLE
ZONE ☐

2. NAME OF OPERATOR

Amoco Production Company

3. ADDRESS OF OPERATOR

P.O. DRAWER A, LEVELAND, TEXAS 79336

4. LOCATION OF WELL (Report location clearly and in accordance with any State requirements.)

At surface

2323' FSLX 796' FWL SEC. 18 (UNIT NW 1/4 SW 1/4) RECEIVED

At proposed prod. zone

14. DISTANCE IN MILES AND DIRECTION FROM NEAREST TOWN OR POST OFFICE*

APR 8 1977

9 MILES SE OF CARLSBAD, NM

15. DISTANCE FROM PROPOSED*

LOCATION TO NEAREST
PROPERTY OR LEASE LINE, FT.
(Also to nearest drlg. unit line, if any)

18. DISTANCE FROM PROPOSED LOCATION*

TO NEAREST WELL, DRILLING, COMPLETED,
OR APPLIED FOR, ON THIS LEASE, FT.

16. NO. OF ACRES IN LEASE

O. C. C.
ARTESIA, OFFICE17. NO. OF ACRES ASSIGNED
TO THIS WELL

34.44

19. PROPOSED DEPTH

5900'

20. ROTARY OR CABLE TOOLS

ROTARY

21. ELEVATIONS (Show whether DF, RT, GR, etc.)

22. APPROX. DATE WORK WILL START*

3085.9 GR

23.

PROPOSED CASING AND CEMENTING PROGRAM

SIZE OF HOLE	SIZE OF CASING	WEIGHT PER FOOT	SETTING DEPTH	QUANTITY OF CEMENT
12 1/4"	8 5/8"	24#	400'	CIRCULATE
7 7/8"	5 1/2"	14-15.5 #	5900'	SUFFICIENT TO TIE BACK INTO SURFACE PIPE.

After drilling well, logs will be run and evaluations made,
perforating and or stimulating as necessary in attempting commercial
production.

MUD PROGRAM: O- SCP WATER & NATIVE MUD
SCP- TD BRINE & NATIVE MUD

BOP PROGRAM: ATTACHED

IN ABOVE SPACE DESCRIBE PROPOSED PROGRAM: If proposal is to deepen or plug back, give data on present productive zone and proposed new productive zone. If proposal is to drill or deepen directionally, give pertinent data on subsurface locations and measured and true vertical depths. Give blowout preventer program, if any.

24.

SIGNED

Allen V. Hendley

TITLE

STAFF ASSISTANT [SG]

DATE

3-23-77

(This space for Federal or State office use)

PERMIT NO.

APPROVAL DATE

APPROVED BY

TITLE

DATE

CONDITIONS OF APPROVAL, IF ANY:

- 4 - USGS
- 1 - DIV
- 1 - SUSP.
- 1 - RC
- 2 - BASS

*See Instructions On Reverse Side

NEW MEXICO OIL CONSERVATION COMMISSION
WELL LOCATION AND ACREAGE DEDICATION PLAT

Form L-102
Supersedes L-128
Effective 1-1-65

All distances must be from the outer boundaries of the Section

Operator AMOCO PRODUCTION COMPANY			Lease OLD INDIAN DRAW		Well No. 22
Unit Letter L	Section 18	Township 22 SOUTH	Range 28 EAST	County EDDY	
Actual Footage Location of Well: 2323 feet from the SOUTH line and 796 feet from the WEST line					
Ground Level Elev. 3085.9	Producing Formation DELAWARE	Rock INDIAN DRAW DELAWARE	Water Depth 34.44		

- Outline the acreage dedicated to the subject well by colored pencil or hatchure marks on the plat below.
- If more than one lease is dedicated to the well, outline each and identify the ownership thereof (both as to working interest and royalty)
- If more than one lease of different ownership is dedicated to the well, have the interests of all owners been consolidated by communitization, unitization, force-pooling, etc?

☐ Yes ☐ No If answer is "yes," type of consolidation _____

If answer is "no," list the owners and tract descriptions which have actually been consolidated (use reverse side of this form if necessary.) _____

No allowable will be assigned to the well until all interests have been consolidated (by communitization, unitization, forced-pooling, or otherwise) or until a non-standard unit, eliminating such interests, has been approved by the Commission.

RECEIVED

MAR 24 1977

U.S. GEOLOGICAL SURVEY
ARTESIA, NEW MEXICO

CERTIFICATION

I hereby certify that the information contained herein is true and complete to the best of my knowledge and belief

Name Ray W. Cox
Position Administrative Assistant

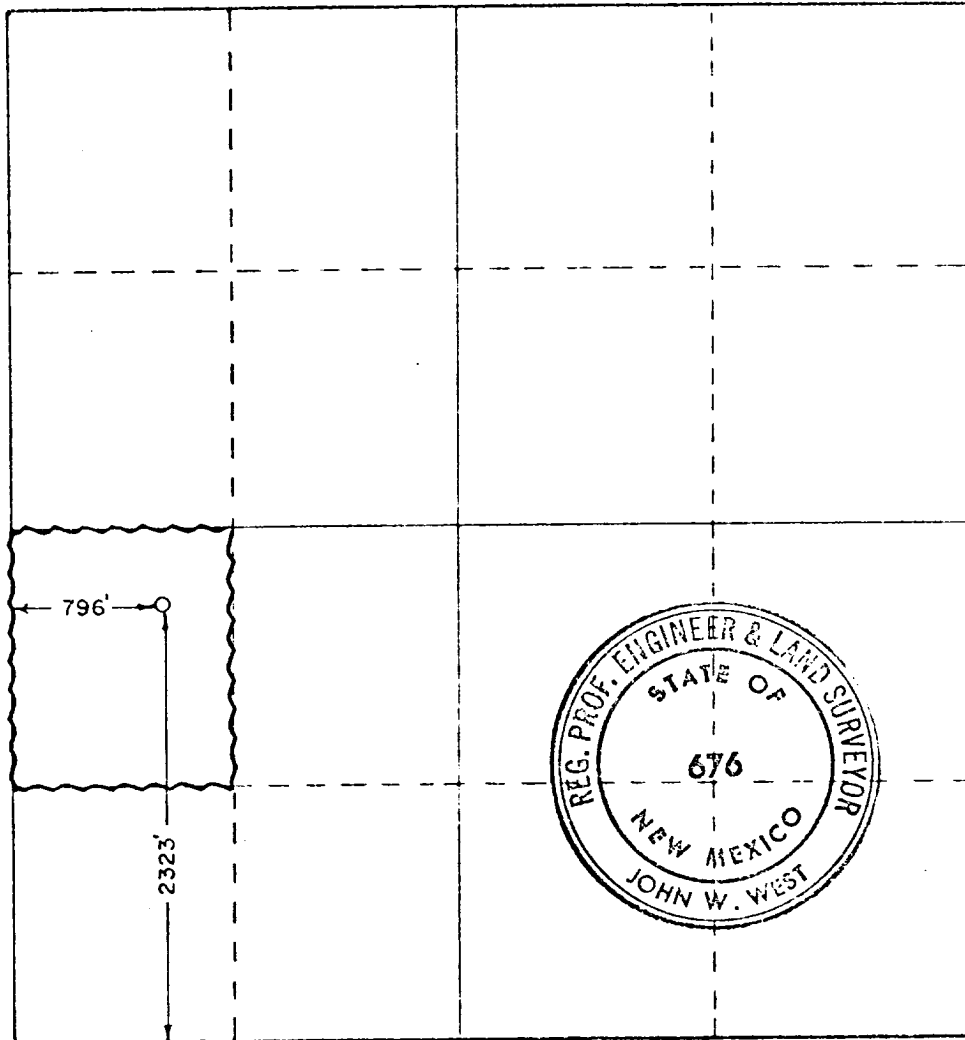
Company AMOCO PRODUCTION COMPANY
Date MARCH 7, 1977

I hereby certify that the well location shown on this plat was plotted from field notes of actual surveys made by me or under my supervision and that the same is true and correct to the best of my knowledge and belief

Date Surveyed FEBRUARY 14, 1977

Registered Professional Engineer and/or Land Surveyor

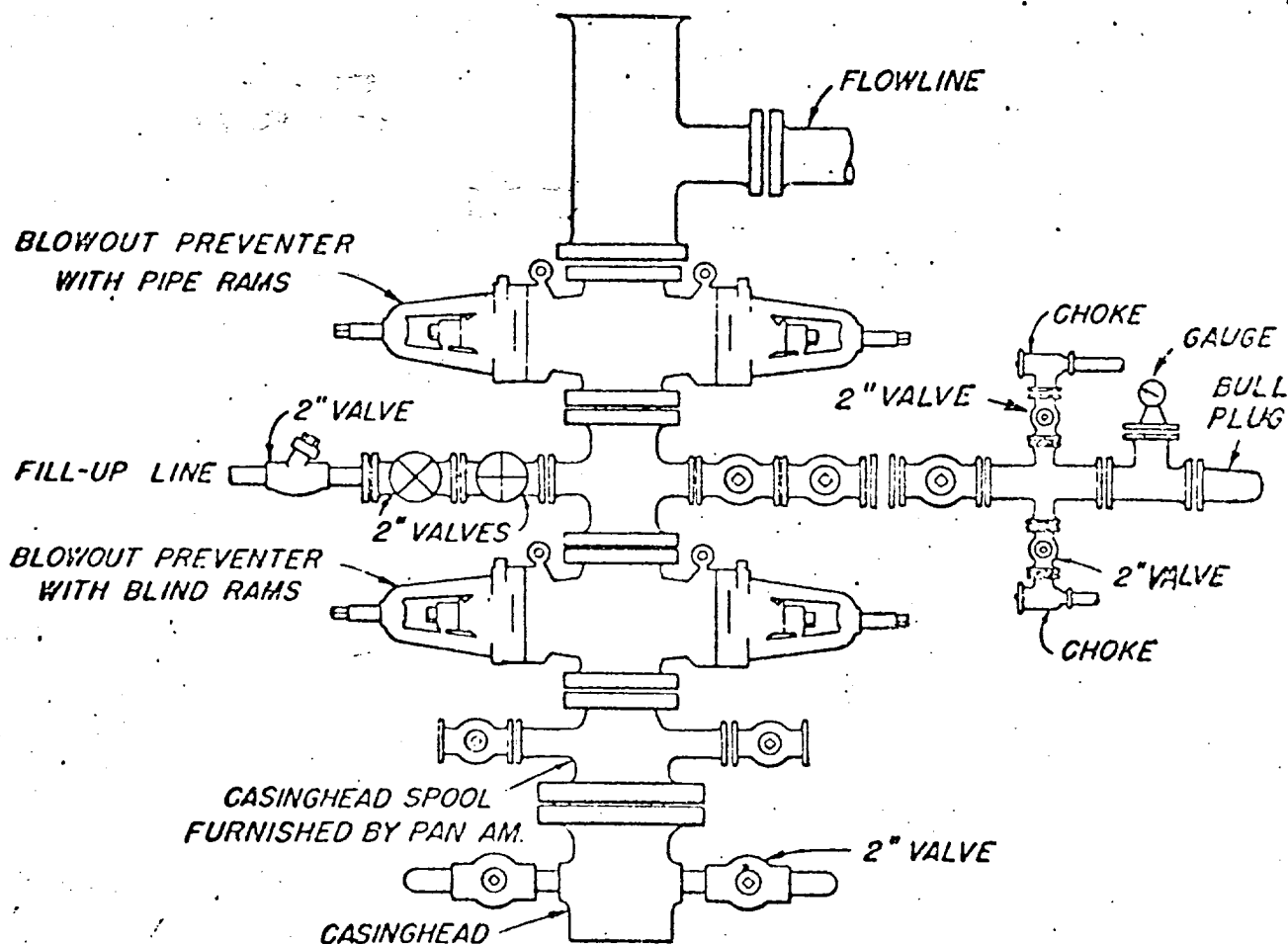
John W. West
Certificate No. 676



0 330 660 990 1320 1650 1980 2310 2640 2970 3300 3630 3960 4290 4620 4950 5280 5610 5940 6270 6600 6930 7260 7590 7920 8250 8580 8910 9240 9570 9900

NOTES

1. Blow-out preventer and master valve to be fluid operated and all fittings must be in good condition, 3,000# W.P. (6,000 p.s.i. test), minimum.
2. Equipment through which bit must pass shall be as large as the inside diameter of the casing that is being drilled through.
3. Nipple above blow-out preventer shall be same size as casing being drilled through.
4. Kelly cock required, 3,000# W.P. (6,000 p.s.i. test), minimum.
5. OMSCO or comparable safety valve must be available on rig floor at all times with proper connection or sub, 3,000# W.P. (6,000 p.s.i. test), minimum.
6. Blow-out preventers and master valve while drilling intermediate hole to 6,000' may be 2,000# W.P. (4,000 p.s.i. test), minimum.
7. Choke assembly, beyond second valve from cross, may be positioned (Optional) outside of derrick foundation.
8. Spool or cross may be eliminated if connections are available in the lower part of the blow-out preventer body.
9. Plug valves - gate valves are optional. Valves shown as 2" are minimum size.
10. Casing head and casing head spool, including attached valves, to be furnished by Pan American.
11. Rams in preventers will be installed as follows:
 When drilling, use:
 Top Preventer - Drill pipe rams
 Bottom Preventer - Blind rams or master valve
 When running casing, use:
 Top Preventer - Casing rams
 Bottom Preventer - Blind rams or master valve.



BLOWOUT PREVENTER HOOK-UP
 PAN AMERICAN PETROLEUM CORP.