

| | |
|------------------------|-----|
| NO. OF COPIES RECEIVED | 6 |
| DISTRIBUTION | |
| SANTA FE | 1 |
| FILE | 1 ✓ |
| U.S.G.S. | 2 |
| LAND OFFICE | 1 |
| OPERATOR | 1 |

NEW MEXICO OIL CONSERVATION COMMISSION

RECEIVED

OCT 12 1978

O. C. C.

ARTESIA, OFFICE

32-015-22714

Form C-101
Revised 1-1-65

| | |
|---|------------------------------|
| 5A. Indicate Type of Lease | |
| STATE <input checked="" type="checkbox"/> | FEE <input type="checkbox"/> |
| 5. State Oil & Gas Lease No. | |
| E 4205 | |

APPLICATION FOR PERMIT TO DRILL, DEEPEN, OR PLUG BACK

| | | | |
|--|--|--|--|
| 1. Type of Work | | 7. Unit Agreement Name | |
| Type of Well OIL WELL <input checked="" type="checkbox"/> GAS WELL <input type="checkbox"/> OTHER <input type="checkbox"/> | | 8. Firm or Lease Name Ford State | |
| Name of Operator C. E. LaRue and B. N. Muncy, Jr. ✓ | | 9. Well No. 2 | |
| Address of Operator P.O. Box 196, Artesia, New Mexico 88210 | | 10. Field and Pool, or Wildcat Undesignated Indian Flats Delaware | |
| Location of Well UNIT LETTER F LOCATED 1650 FEET FROM THE North LINE 1650 FEET FROM THE West LINE OF SEC. 2 TWP. 22S RGE. 28E N.M.P.M. | | 12. County Eddy | |
| 18. Proposed Depth 3900 | | 19A. Formation Delaware | |
| 21A. Kind & Status Plug, Isent Statewide | | 21B. Drilling Contractor Company tools | |
| 22. Approx. Date Work will start October 13, 1978 | | | |

PROPOSED CASING AND CEMENT PROGRAM

| SIZE OF HOLE | SIZE OF CASING | WEIGHT PER FOOT | SETTING DEPTH | SACKS OF CEMENT | EST. TOP |
|--------------|----------------|-----------------|---------------|-----------------|------------|
| 11" | 8-5/8" | 29# | 400' | 125 | Circulated |
| 7-7/8" | 5-1/2" | 15.5# | 3900' | 350 | 2200 |

Adequate blow out preventer to be used.

APPROVAL VALID
FOR 90 DAYS UNLESS
DRILLING COMMENCED,

EXPIRES 1-13-79

ABOVE SPACE DESCRIBE PROPOSED PROGRAM: IF PROPOSAL IS TO DEEPEN OR PLUG BACK, GIVE DATA ON PRESENT PRODUCTIVE ZONE AND PROPOSED NEW PRODUCTIVE ZONE. GIVE BLOWOUT PREVENTER PROGRAM, IF ANY.

I hereby certify that the information above is true and complete to the best of my knowledge and belief.

Signed [Signature] Title Operator Date October 10, 1978
(This space for State Use)

APPROVED BY [Signature] TITLE SUPERVISOR, DISTRICT II DATE OCT 13 1978
CONDITIONS OF APPROVAL, IF ANY:

Cement must be circulated to
surface behind 8-5/8" casing

**MEXICO OIL CONSERVATION COMMISSION
WELL LOCATION AND ACREAGE DEDICATION PLAT**

Form C-102
Supersedes C-128
Effective 1-1-65

All distances must be from the outer boundaries of the Section.

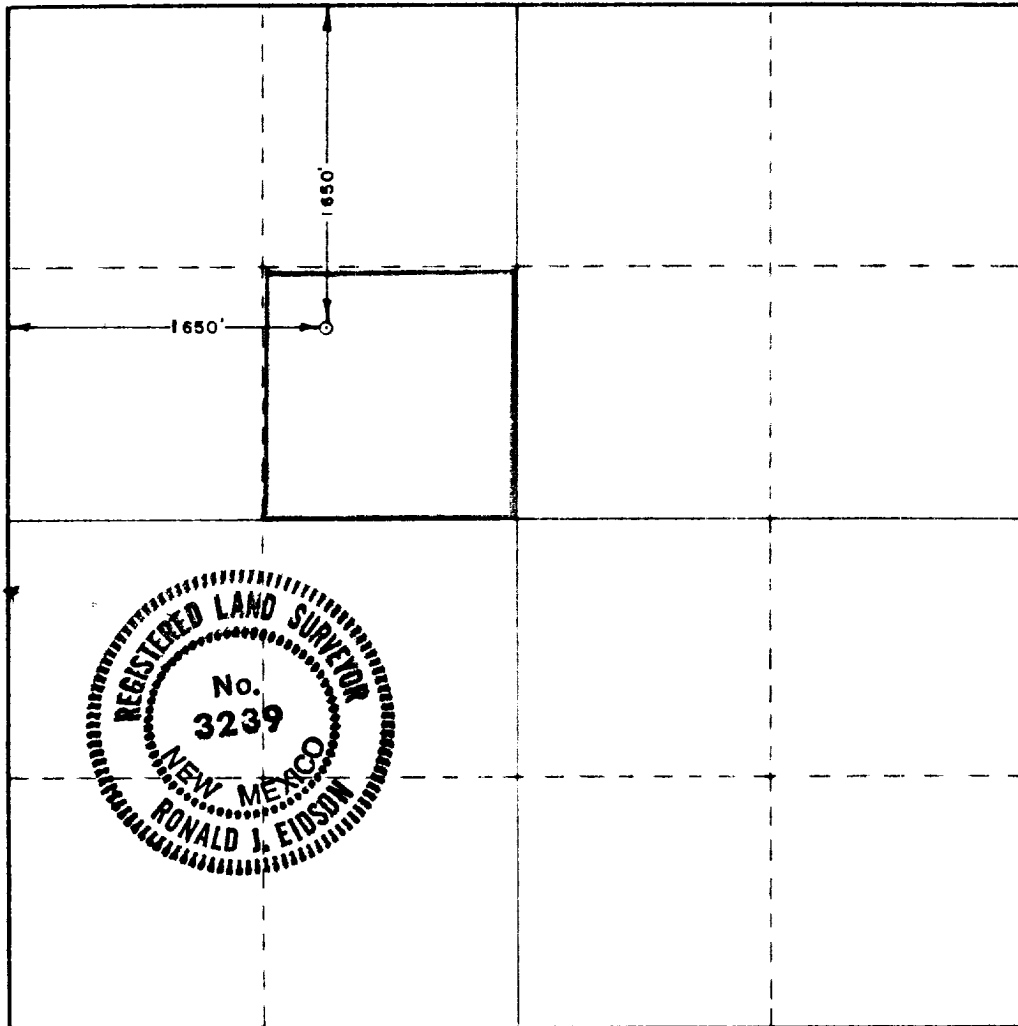
| | | | | | |
|---|--|---|----------------------------|---------------------------------------|----------------------|
| Operator C.E. LaRue & B.N. Muncy, Jr. | | | Lease Ford State | | Well No. 2 |
| Section Letter F | Section 2 | Township 22 South | Range 28 East | County Eddy | |
| Actual Surface Location of Well: <div style="display: flex; justify-content: space-between; align-items: center;"> 1650 feet from the North line and 1650 feet from the West line </div> | | | | | |
| Ground Level Elev. 3156.4 | Producing Formation Delaware | Pool Undesignated Indian Flats Delaware | | Dedicated Acreage: 40 Acres | |

1. Outline the acreage dedicated to the subject well by colored pencil or hachure marks on the plat below.
2. If more than one lease is dedicated to the well, outline each and identify the ownership thereof (both as to working interest and royalty).
3. If more than one lease of different ownership is dedicated to the well, have the interests of all owners been consolidated by communitization, unitization, force-pooling, etc?

☐ Yes ☐ No If answer is "yes," type of consolidation _____

If answer is "no," list the owners and tract descriptions which have actually been consolidated. (Use reverse side of this form if necessary.) _____

No allowable will be assigned to the well until all interests have been consolidated (by communitization, unitization, forced-pooling, or otherwise) or until a non-standard unit, eliminating such interests, has been approved by the Commission.



CERTIFICATION

I hereby certify that the information contained herein is true and complete to the best of my knowledge and belief.

Name _____
Position **Operator**

Company
C.E. LaRue and B.N. Muncy, Jr.

Date
October 10, 1978

I hereby certify that the well location shown on this plat was plotted from field notes of actual surveys made by me or under my supervision, and that the same is true and correct to the best of my knowledge and belief.

Date Surveyed
October 7, 1978

Registered Professional Engineer
and/or Land Surveyor

Ronald J. Eidson
Certificate No. **John W. West** 676
Ronald J. Eidson 3239

450 900 1350 1800 2250 2700 3150 3600 4050 4500 4950 5400 5850 6300