

NEW MEXICO OIL CONSERVATION COMMISSION
 WL LOCATION AND ACREAGE DEDICATION PLAT

Form C-102
 Supersedes C-128
 Effective 1-1-65

All distances must be from the outer boundaries of the Section

Operator Amoco Production Company				Lease State LC Com.		Well No. #1
Unit Letter C	Section 7	Township 24 South	Range 25 East	County Eddy		
Actual Footage Location of Well: 660 feet from the North line and 1980 feet from the West line						
Ground Level Elev. 4022.2	Producing Formation Morrow	Pool Und. Morrow		Dedicated Acreage: 320 3/4 Acres		

RECEIVED

FEB 27 1980

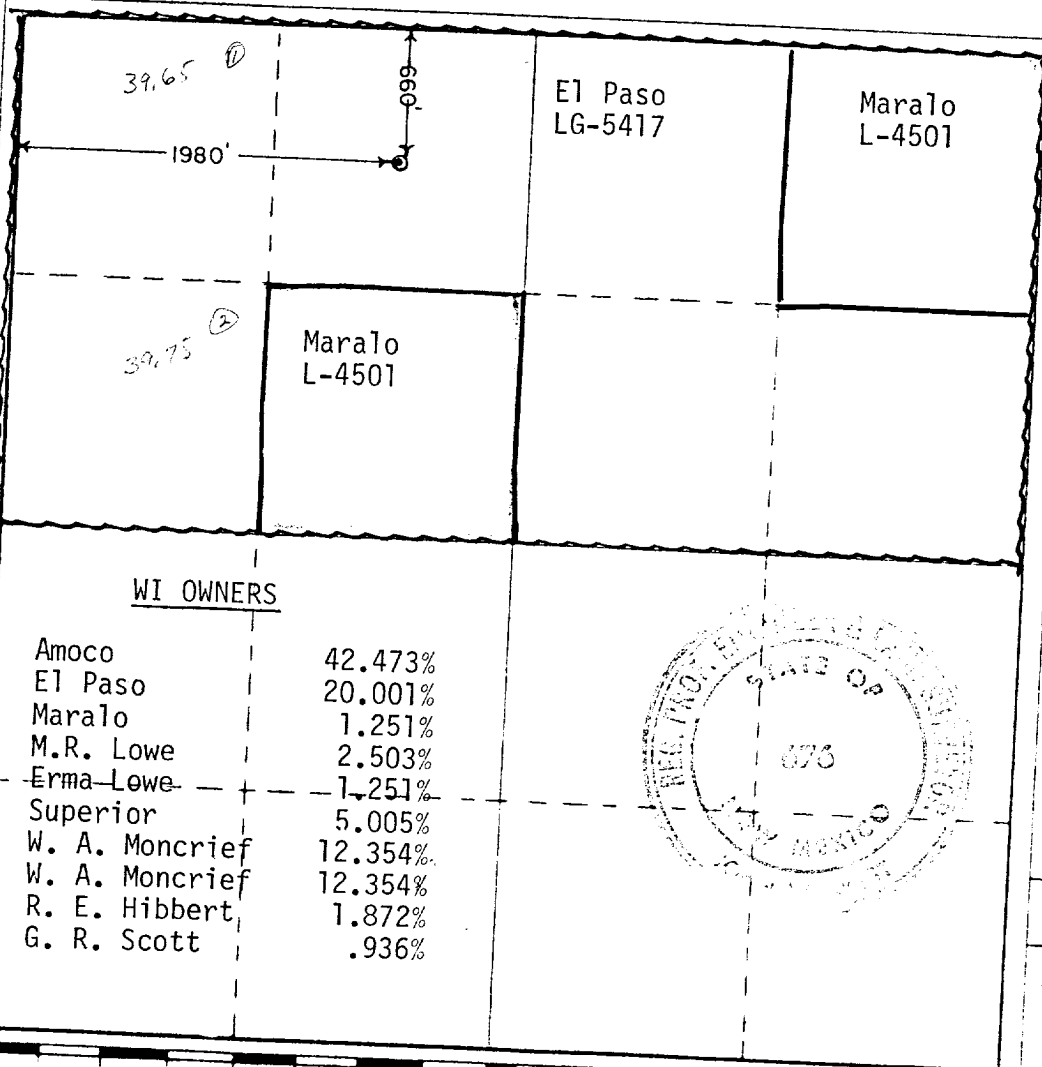
1. Outline the acreage dedicated to the subject well by colored pencil or hatching marks on the plat below.
2. If more than one lease is dedicated to the well, outline each and identify the ownership thereof (both as to working interest and royalty).
3. If more than one lease of different ownership is dedicated to the well, have the interests of all owners been consolidated by communitization, unitization, force-pooling, etc?

ARTESIA, OFFICE

☒ Yes ☐ No If answer is "yes," type of consolidation Communitization

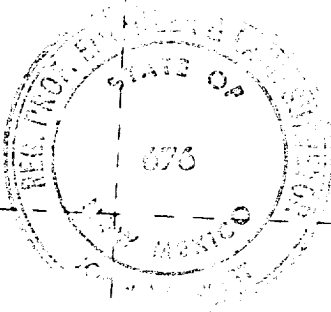
If answer is "no," list the owners and tract descriptions which have actually been consolidated. (Use reverse side of this form if necessary.)

No allowable will be assigned to the well until all interests have been consolidated (by communitization, unitization, forced-pooling, or otherwise) or until a non-standard unit, eliminating such interests, has been approved by the Commission.



WI OWNERS

Amoco	42.473%
El Paso	20.001%
Maralo	1.251%
M.R. Lowe	2.503%
Erma Lowe	1.251%
Superior	5.005%
W. A. Moncrief	12.354%
W. A. Moncrief	12.354%
R. E. Hibbert	1.872%
G. R. Scott	.936%



CERTIFICATION

I hereby certify that the information contained herein is true and complete to the best of my knowledge and belief.

Bob Davis

Name
 Assist. Admin. Analyst
 Position
 Amoco Production Company
 Company
 2-27-80
 Date

I hereby certify that the well location shown on this plat was plotted from field notes of actual surveys made by me or under my supervision, and that the same is true and correct to the best of my knowledge and belief.

Date Surveyed
 2-23-1980
 Registered Professional Engineer and/or Land Surveyor

John W. West

Certificate No. **JOHN W. WEST 676**
PATRICK A. ROMERO 6863
Ronald J. Eidson 3239