

Submit to Appropriate District Office
 State Lease - 4 copies
 Fee Lease - 3 copies

State of New Mexico
 Energy, Minerals and Natural Resources Department

Form C-102
 Revised 1-1-89

OIL CONSERVATION DIVISION
 P.O. Box 2088
 Santa Fe, New Mexico 87504-2088

DISTRICT I
 P.O. Box 1980, Hobbs, NM 88240

DISTRICT II
 P.O. Drawer DD, Artesia, NM 88210

DISTRICT III
 1000 Rio Brazos Rd., Aztec, NM 87410

WELL LOCATION AND ACREAGE DEDICATION PLAT
 All Distances must be from the outer boundaries of the section

Operator Santa Fe Energy Operating Partners, L P			Lease Harroun Trust		Well No. 1
Unit Letter 0	Section 30	Township 23 South	Range 29 East	County Eddy	

Actual Footage Location of Well:
 660 feet from the South line and 2310 feet from the East line

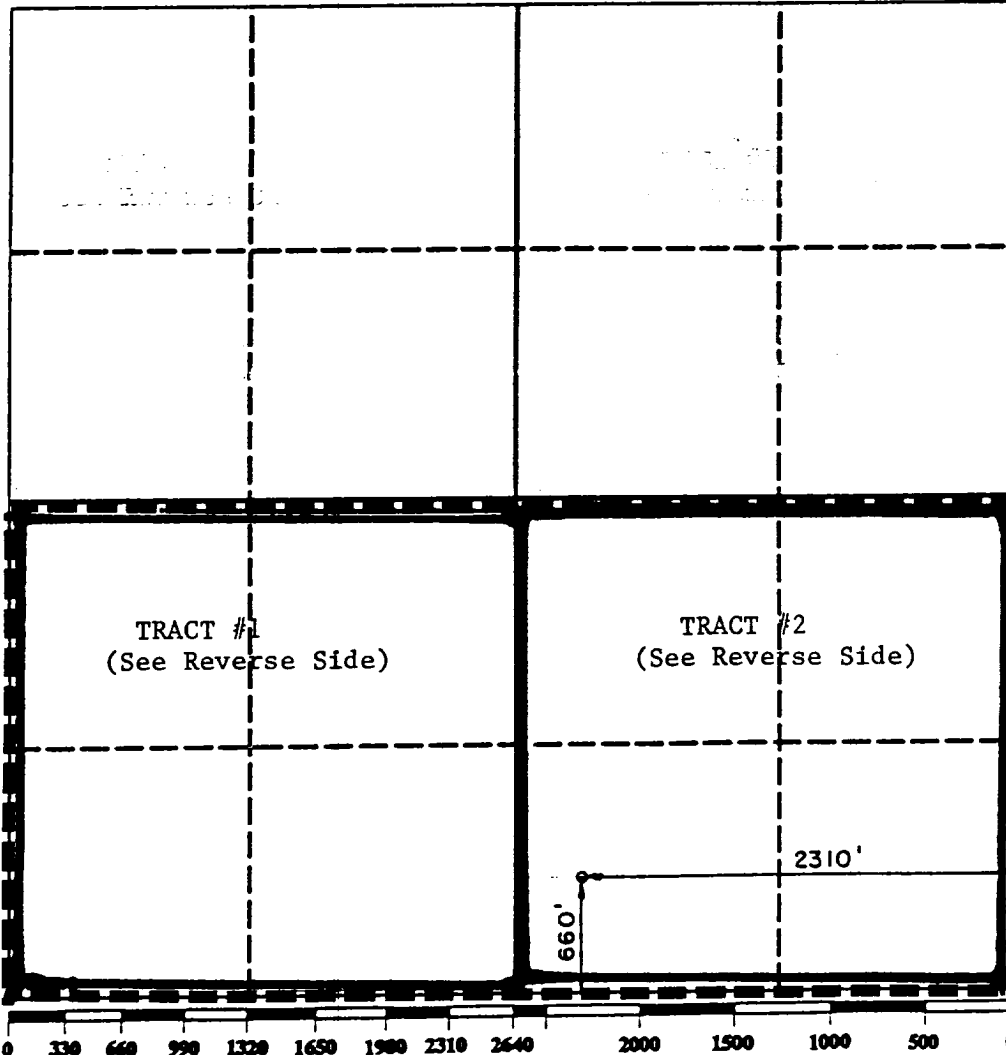
Ground level Elev. 2959.8	Producing Formation Morrow	Pool Und. Cedar Canyon Morrow	Dedicated Acreage: 320 Acres
------------------------------	-------------------------------	----------------------------------	---------------------------------

- Outline the acreage dedicated to the subject well by colored pencil or hatchure marks on the plat below.
- If more than one lease is dedicated to the well, outline each and identify the ownership thereof (both as to working interest and royalty).
- If more than one lease of different ownership is dedicated to the well, have the interest of all owners been consolidated by communitization, unitization, force-pooling, etc.?

Yes No If answer is "yes" type of consolidation Lease Pooling Provisions

If answer is "no" list the owners and tract descriptions which have actually been consolidated. (Use reverse side of this form if necessary.)

No allowable will be assigned to the well until all interests have been consolidated (by communitization, unitization, forced-pooling, or otherwise) or until a non-standard unit, eliminating such interest, has been approved by the Division.



OPERATOR CERTIFICATION
 I hereby certify that the information contained herein is true and complete to the best of my knowledge and belief.

Signature: *Michael R. Burton*
 Printed Name: Michael R. Burton
 Position: District Drilling Engineer
 Company: Santa Fe Energy Operating Partners, L.P.
 Date: August 25, 1989

SURVEYOR CERTIFICATION
 I hereby certify that the well location shown on this plat was plotted from field notes of actual surveys made by me or under my supervision, and that the same is true and correct to the best of my knowledge and belief.

Date Surveyed: August 14, 1989

Signature & Seal of Professional Surveyor:

 Certificate No. 676 W. WEST 676
 RONALD J. EDSON 3239
 JOHN W. WEST

128830

TRACT #1

Working Interest Owner

Santa Fe Energy Operating - 100%
Partners, L.P.

Royalty Interest Owners

Johnnie Giovengo et ux
Johnnie Giovengo, Jr. et ux - 18.75%
Ronnie G. Carroll et ux

TRACT #2

Working Interest Owner

Texaco Producing Inc. - 100%

Royalty Interest Owners

Eleanor F. Harroun,
Catherine Harroun,
C. Fincher Neal &
Jerome D. Matkins - 18.75%

