

OIL CONSERVATION DIVISION

P.O. Box 2088
Santa Fe, New Mexico 87504-2088

RICT I
Box 1980, Hobbs, NM 88240

RICT II
Drawer DD, Artesia, NM 88210

RICT III
Rio Brazos Rd., Aztec, NM 87410

WELL LOCATION AND ACREAGE DEDICATION PLAT

All Distances must be from the outer boundaries of the section

Operator Ray Westall Operating			Lease Santa Fe Federal		Well No. 5
Letter B	Section 35	Township 22 South	Range 28 East	County Eddy	
Well Footage Location of Well: 990 feet from the North line and 2130 feet from the East line					
Well level Elev. 3118	Producing Formation Delaware		Pool E. Herradura Bend	Dedicated Acreage: 40 Acres	

1. Outline the acreage dedicated to the subject well by colored pencil or hatchure marks on the plat below.

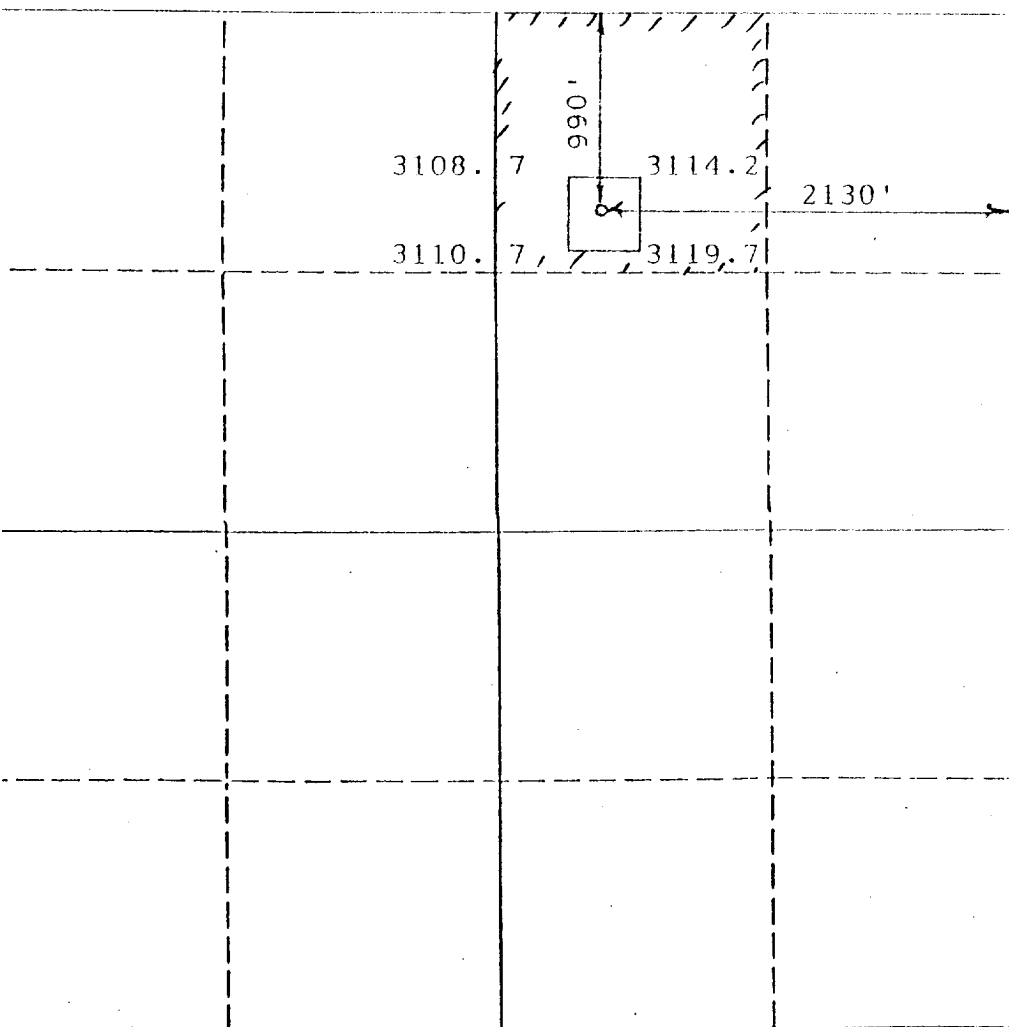
2. If more than one lease is dedicated to the well, outline each and identify the ownership thereof (both as to working interest and royalty).

3. If more than one lease of different ownership is dedicated to the well, have the interest of all owners been consolidated by communitization, unitization, force-pooling, etc.?

☐ Yes ☐ No If answer is "yes" type of consolidation

If answer is "no" list the owners and tract descriptions which have actually been consolidated. (Use reverse side of this form if necessary.)

No allowable will be assigned to the well until all interests have been consolidated (by communitization, unitization, forced-pooling, or otherwise) or until a non-standard unit, eliminating such interest, has been approved by the Division.



OPERATOR CERTIFICATION

I hereby certify that the information contained herein is true and complete to the best of my knowledge and belief.

Signature

Printed Name

Randall L. Harris

Position

Geologist

Company

Ray Westall

Date

6/1/92

SURVEYOR CERTIFICATION

I hereby certify that the well location shown on this plat was plotted from field notes of actual surveys made by me or under my supervision, and that the same is true and correct to the best of my knowledge and belief.

Date Surveyed

April 28, 1992

Signature & Seal of **P. R. Patton**
Professional Surveyor

Certificate No.

8112