

OIL CONSERVATION DIVISION

DISTRICT I  
P.O. Box 1980, Hobbs, NM 88240

P.O. Box 2088

Santa Fe, New Mexico 87504-2088

DISTRICT II  
P.O. Drawer DD, Artesia, NM 88210

DISTRICT III  
1000 Rio Brazos Rd., Aztec, NM 87410

WELL LOCATION AND ACREAGE DEDICATION PLAT

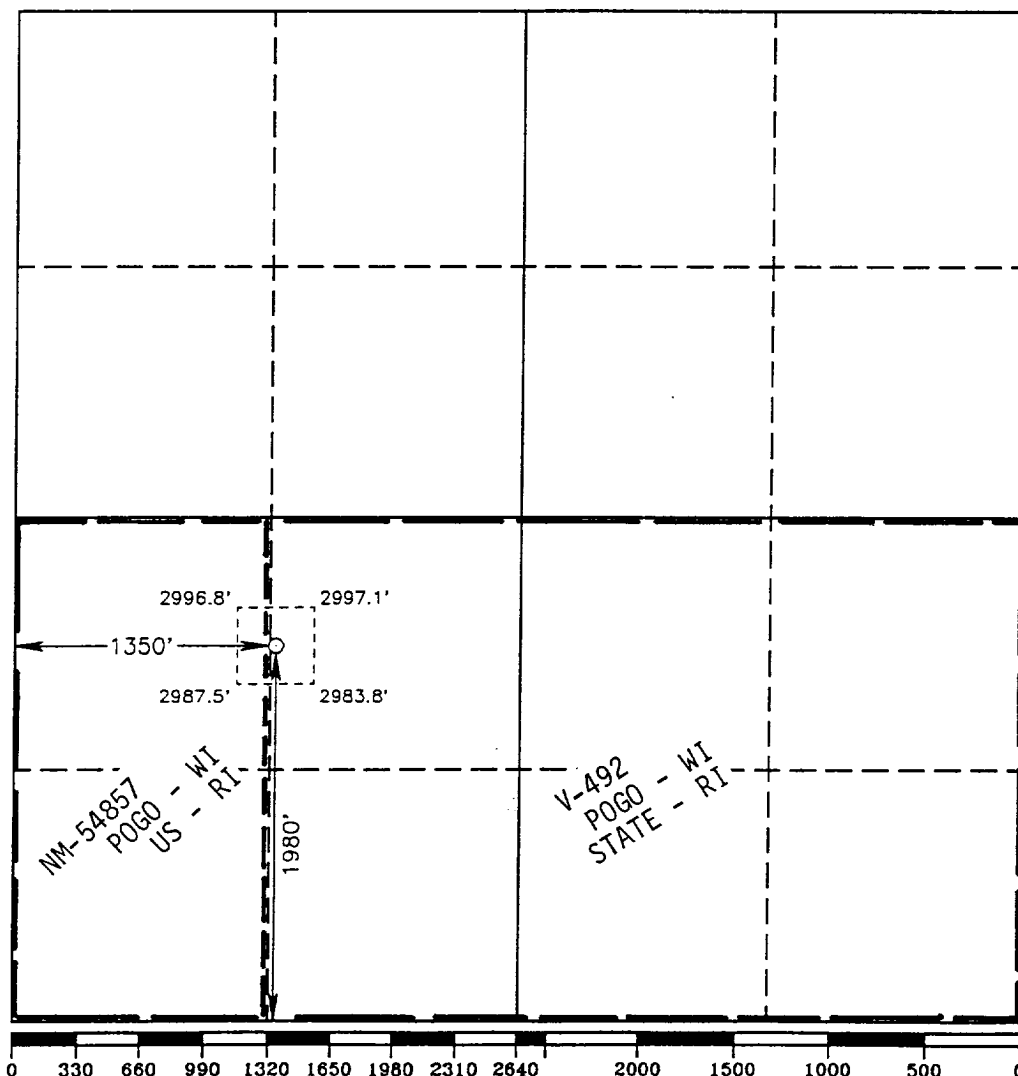
All Distances must be from the outer boundaries of the section

Operator POGO PRODUCING CO.			Lease STATE "V" 492		Well No. 3
Unit Letter K	Section 27	Township 24 SOUTH	Range 28 EAST	County EDDY	
Actual Footage Location of Well: 1980 feet from the SOUTH line and 1350 feet from the WEST line					
Ground Level Elev. 2994.1'	Producing Formation MORROW		Pool WILDCAT	Dedicated Acreage: 320 Acres	

1. Outline the acreage dedicated to the subject well by colored pencil or hachure marks on the plat below.
2. If more than one lease is dedicated to the well, outline each and identify the ownership thereof (both as to working interest and royalty).
3. If more than one lease of different ownership is dedicated to the well, have the interest of all owners been consolidated by communitization, unitization, force-pooling, etc.?  
☐ Yes ☒ No If answer is "yes" type of consolidation TO BE COMMUNITIZED

If answer is "no" list of owners and tract descriptions which have actually been consolidated. (Use reverse side of this form necessary.)

No allowable will be assigned to the well unit all interests have been consolidated (by communitization, unitization, forced-pooling, otherwise) or until a non-standard unit, eliminating such interest, has been approved by the Division.



OPERATOR CERTIFICATION

I hereby certify that the information contained herein is true and complete to the best of my knowledge and belief.

Signature  
*Richard L. Wright*  
Printed Name  
Richard L. Wright  
Position  
Division Operations Supr.  
Company  
POGO PRODUCING COMPANY  
Date  
May 3, 1993

SURVEYOR CERTIFICATION

I hereby certify that the well location shown on this plat was plotted from field notes of actual surveys made by me or under my supervision, and that the same is true and correct to the best of my knowledge and belief.

Date Surveyed  
APRIL 16, 1993  
Signature & Seal of Professional Surveyor  
*Gary L. Jones*  
Certificate No. JOHN W. JONES, 676  
RONALD J. JONES, 3239  
GARY L. JONES, 7977