

Submit to Appropriate  
District Office  
State Lease - 4 copies  
Fee Lease - 3 copies

State of New Mexico  
Energy, Minerals and Natural Resources Department

Form C-102  
Revised 1-1-88

OIL CONSERVATION DIVISION

P.O. Box 2038  
Santa Fe, New Mexico 87504-2088

DISTRICT I

P.O. Box 1980, Hobbs, NM 88240

DISTRICT II

P.O. Drawer DD, Artesia, NM 88210

DISTRICT III

1000 Rio Brazos Rd., Aztec, NM 87410

WELL LOCATION AND ACREAGE DEDICATION PLAT

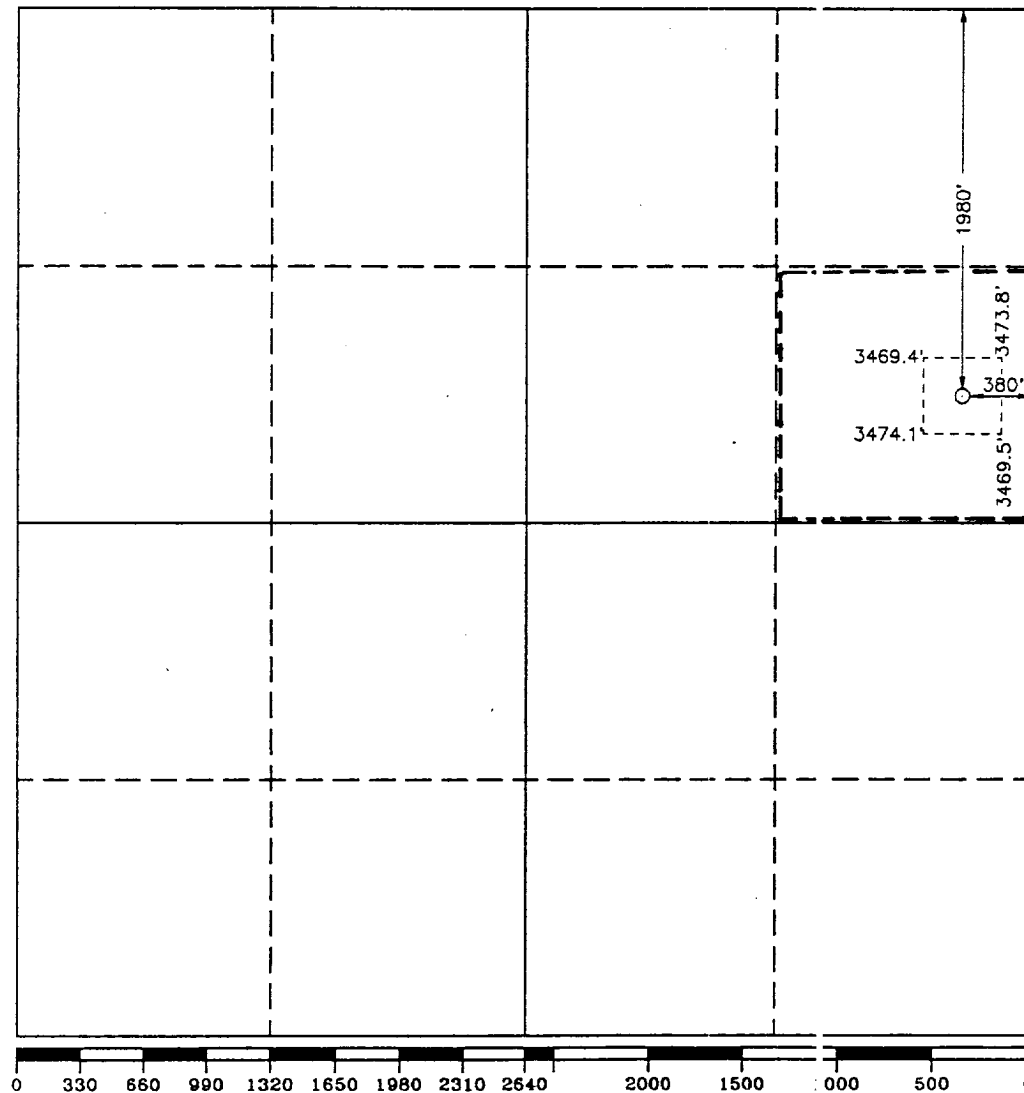
All Distances must be from the outer boundaries of the section

Operator POGO PRODUCING CO.			Lease CAL-MON		Well No. 19
Unit Letter H	Section 35	Township 23 SOUTH	Range 1 EAST	NMPM	County EDDY
Actual Footage Location of Well: 380 feet from the EAST line and 1980 feet from the NORTH line					
Ground Level Elev. 3471.5'	Producing Formation DELAWARE	Pool UNDES. INGLE WELLS DELAWARE		Dedicated Acreage: 40 Acres	

- Outline the acreage dedicated to the subject well by colored pencil or hachure marks on the plat below.
- If more than one lease is dedicated to the well, outline each and identify the ownership thereof (both as to working interest and royalty).
- If more than one lease of different ownership is dedicated to the well, have the interest of all owners been consolidated by communitization, unitization, force-pooling, etc.?  
☐ Yes ☐ No If answer is "yes" type of consolidation \_\_\_\_\_

If answer is "no" list of owners and tract descriptions which have actually been consolidated. (Use reverse side of this form necessary.)

No allowable will be assigned to the well unit all interests have been consolidated (by communitization, unitization, forced-pooling, otherwise) or until a non-standard unit, eliminating such interest, has been approved by the Division.



OPERATOR CERTIFICATION

I hereby certify the the information contained herein is true and complete to the best of my knowledge and belief.

*Barrett Smith*

Signature

Barrett Smith

Printed Name

Senior Oper. Eng.

Position

Pogo Producing Company

Company

8/25/93

Date

SURVEYOR CERTIFICATION

I hereby certify that the well location shown on this plat was plotted from field notes of actual surveys made by me or under my supervision, and that the same is true and correct to the best of my knowledge and belief.

Date Surveyed

AUGUST 18, 1993

Signature & Seal of  
Professional Surveyor

*GARY L JONES*

GARY L JONES  
NEW MEXICO  
1977

Certification No. JOHN W. WEST 576  
RONALD J. FISHER 3239  
GARY L. JONES 7977