

30-0-2740

**NM OIL CONS. COMMISSION**  
**DRAWER 88210**

UNITED STATES  
DEPARTMENT OF THE INTERIOR  
BUREAU OF LAND MANAGEMENT

NMOC D  
30-015-27610  
Form approved  
Budget Bureau No. 1004-0136  
Expires August 31, 1985

**APPLICATION FOR PERMIT TO DRILL, DEEPEN, OR PLUG BACK**

1a. TYPE OF WORK  
 DRILL  DEEPEN  PLUG BACK   
 APR 09 1993

b. TYPE OF WELL  
 OIL WELL  GAS WELL  OTHER   
 SINGLE ZONE  MULTIPLE ZONE

2. NAME OF OPERATOR  
 Santa Fe Energy Operating Partners, L.P. JUL 20 1993

3. ADDRESS OF OPERATOR  
 550 W. Texas, Suite 4330, Midland, Texas 79701 C.I.D.

4. LOCATION OF WELL (Report location clearly and in accordance with any State requirements.)  
 At surface (H), 1980' FNL and 660' FEL, Sec. 8, T-23S, R-31E  
 At proposed prod. zone H SENE

14. DISTANCE IN MILES AND DIRECTION FROM NEAREST TOWN OR POST OFFICE\*  
 18 miles East of Loving, New Mexico

15. DISTANCE FROM PROPOSED\* LOCATION TO NEAREST PROPERTY OR LEASE LINE, FT.  
 660'

16. NO. OF ACRES IN LEASE  
 320

17. NO. OF ACRES ASSIGNED TO THIS WELL  
 40

18. DISTANCE FROM PROPOSED LOCATION\* TO NEAREST WELL, DRILLING, COMPLETED, OR APPLIED FOR, ON THIS LEASE, FT.  
 1320'

19. PROPOSED DEPTH  
 8200'

20. ROTARY OR CABLE TOOLS  
 Rotary

21. ELEVATIONS (Show whether DF, RT, GR, etc.)  
 3310' GR

22. APPROX. DATE WORK WILL START\*  
 June 15, 1993

5. LEASE DESIGNATION AND SERIAL NO.  
 NM-77046

6. IF INDIAN, ALLOTTEE OR TRIBE NAME

7. UNIT AGREEMENT NAME

8. FARM OR LEASE NAME  
 North Pure Gold 8 Federal

9. WELL NO.  
 3

10. FIELD AND POOL, OR WILDCAT  
 Undesignated Delaware

11. SEC. T. R. M. OR BLK. AND SURVEY OR AREA  
 Sec. 8, T-23S, R-31E

12. COUNTY OR PARISH  
 Eddy

13. STATE  
 NM

23. PROPOSED CASING AND CEMENTING PROGRAM Secretary's Potash R-111-P Potash

SIZE OF HOLE	SIZE OF CASING	WEIGHT PER FOOT	SETTING DEPTH	QUANTITY OF CEMENT
17-1/2"	13-3/8"	48.0	600'	600 sx to circulate
12-1/4"	8-5/8"	32.0	4130'	2000 sx to circulate
7-7/8"	5-1/2"	15.5	8200'	To tie back to 4130' SEE STIPS.

We propose to drill to a depth sufficient to test the Delaware formation for oil. If productive, 5-1/2" casing will be cemented at TD. If non-productive, the well will be plugged and abandoned in a manner consistent with Federal Regulations. Specific programs as per Onshore Oil and Gas Order No. 1 are outlined in the following attachments:

- |                                    |   |
|------------------------------------|---|
| Drilling Program                   | Exhibit E - Topo Map of Location        |
| Exhibit A - Operations Plan        | Exhibit F - Plat Showing Existing Wells |
| Exhibit B - BOP and Choke          | Exhibit G - Well Site Layout            |
| Exhibit C - Drilling Fluid Program | Surface Use and Operations Plan         |
| Exhibit D - Auxiliary Equipment    |   |

18. ABOVE SPACE DESCRIBE PROPOSED PROGRAM: If proposal is to deepen or plug back, give data on present productive zone and proposed new productive zone. If proposal is to drill or deepen directionally, give pertinent data on subsurface locations and measured and true vertical depths. Give blowout preventer program, if any.

24. SIGNED Daniel Roberts TITLE Sr. Drilling Engineer DATE 4/7/93

(This space for Federal or State office use)

PERMIT NO. \_\_\_\_\_ APPROVAL DATE \_\_\_\_\_

APPROVED BY [Signature] TITLE Acty State Director DATE 7-20-93

CONDITIONS OF APPROVAL, IF ANY:  
 APPROVAL SUBJECT TO  
 GENERAL REQUIREMENTS AND  
 SPECIAL STIPULATIONS  
 ATTACHED

\*See Instructions On Reverse Side

**DISTRICT I**  
 P. O. Box 1980  
 Hobbs, NM 88240

**OIL CONSERVATION DIVISION**  
 P. O. Box 2088  
 Santa Fe, New Mexico 87504-2088

**DISTRICT II**  
 P. O. Drawer DD  
 Artesia, NM 88210

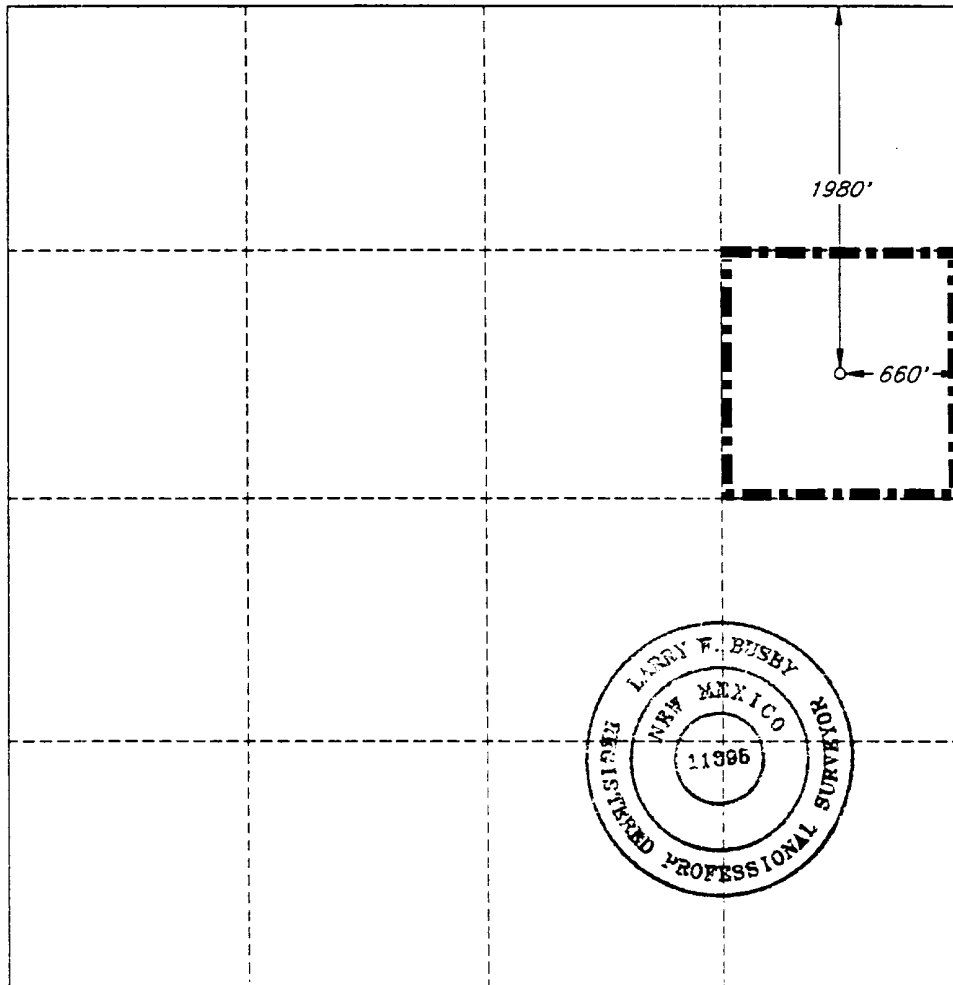
**DISTRICT III**  
 1000 Rio Brazos Rd  
 Aztec, NM 87410

**WELL LOCATION AND ACREAGE DEDICATION PLAT**

All distances must be from the outer boundaries of the section.

Operator <b>SANTA FE ENERGY OPER. PART., L.P.</b>			Lease <b>NORTH PURE GOLD '8' FEDERAL</b>			Well No. <b>3</b>		
Unit Letter <b>H</b>	Section <b>8</b>	Township <b>23 SOUTH</b>	Range <b>31 EAST, N.M.P.M.</b>	County <b>EDDY</b>				
Actual Footage Location of Well								
<b>1980</b> feet from the <b>NORTH</b> line and			<b>660</b> feet from the <b>EAST</b> line					
Ground Level Elev. <b>3310'</b>	Producing Formation <b>Delaware</b>			Pool <b>Undesignated Delaware</b>			Acres <b>40</b>	

- Outline the acreage dedicated to the subject well by colored pencil or hachure marks on the plat below.
- If more than one lease is dedicated to the well, outline each and identify the ownership thereof (both as to working interest and royalty).
- If more than one lease of different ownership is dedicated to the well, have the interest of all the owners been consolidated by communitization, unitization, forced-pooling, etc.?
  - Yes  No If answer is "yes", type of consolidation \_\_\_\_\_
  - If the answer is "no", list the owners and tract descriptions which have actually been consolidated. (Use the reverse side of this form if necessary.) \_\_\_\_\_
 No allowable will be assigned to the well until all interests have been consolidated (by communitization, unitization, forced-pooling, or otherwise) or until a non-standard unit, eliminating such interest, has been approved by the division.



**OPERATOR CERTIFICATION**

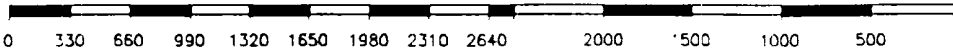
I hereby certify that the information herein is true and complete to the best of my knowledge and belief.

Signature  
*Darrell Roberts*  
 Printed Name  
 Darrell Roberts  
 Position  
 Sr. Drilling Engineer  
 Company  
 Santa Fe Energy Operating Partners, L.P.  
 Date  
 4/7/93

**SURVEYOR CERTIFICATION**

I hereby certify that the well location shown on this plat was plotted from field notes of actual surveys made by me or under my supervision, and that the same is true and correct to the best of my knowledge and belief.

Date Surveyed  
 MARCH 11, 1993  
 Signature and Seal of Professional Surveyor  
*Larry W. Busby*  
 Certificate No.  
 LARRY W. BUSBY R.P.S. #11398  
 JOB NO. 94837 V.H.B.



**DRILLING PROGRAM**  
SANTA FE ENERGY OPERATING PARTNERS, L.P.  
North Pure Gold 8 Federal No. 3

In conjunction with Form 3160-3, Application to Drill the subject well, Santa Fe Energy Operating Partners.L.P., submits the following ten items of pertinent information in accordance with Onshore Oil & Gas Order No. 10.

1. **Geologic Name of Surface Formation:** Alluvium

2. **Estimated Tops of Significant Geologic Markers:**

Rustler Anhydrite	750'
Base of Salt	3840'
Delaware "Ramsey" Sand	4170'
Cherry Canyon	5070'
Brushy Canyon	7790'
Bone Spring	8060'
Total Depth	8200'

3. **The estimated depths at which water, oil, or gas formations are expected:**

Water	None expected in area
Oil	Delaware Sand @ 4170'
Oil	Lower Brushy Canyon @ 7790'

4. **Proposed Casing Program:** See Form 3160-3 and Exhibit A.

5. **Pressure Control Equipment:** See Exhibit B.

6. **Drilling Fluid Program:** See Exhibit C.

7. **Auxiliary Equipment:** A mud logging unit will be utilized to monitor penetration rate and hydrocarbon shows while drilling below the intermediate casing at 4100'.

8. **Testing, Logging and Coring Program:**

None

## **DRILLING PROGRAM**

North Pure Gold 8 Federal No. 3

Page 2

Logging:

Dual Laterolog w/MSFL and Gamma Ray 4100'-8200'

Compensated Neutron/Litho-Density/Gamma Ray 4100'-8200'

Compensated Neutron/Gamma Ray (thru csg) Surface-4100'

Coring: No conventional cores are planned.

### **9. Abnormal Conditions, Pressures, Temperatures, & Potential Hazards:**

No abnormal pressures or temperatures are anticipated. The estimated bottom hole temperature is 135 °F and the estimated bottom hole pressure is 3500 psi. No Hydrogen Sulfide or other hazardous gases or fluids have been encountered, reported or are known to exist at this depth in this area. No major lost circulation zones have been reported in the offsetting wells.

### **10. Anticipated Starting Date and Duration of Operations:**

Road and location work will not begin until approval has been received from the BLM. The anticipated spud date is June 15, 1993. Once spudded, the drilling operation should be completed in approximately 16 days. If the well is productive, an additional 30 days will be required for completion and testing before permanent facilities are installed.

SANTA FE ENERGY OPERATING PARTNERS,L.P.  
OPERATIONS PLAN  
North Pure Gold 8 Federal No. 3

1. Drill a 17 1/2" hole to approximately 600'.
2. Run 13 3/8" 48.0 ppf H-40 ST&C casing. Cement with 600 sx Class "C" cement containing 2% CaCl<sub>2</sub>. Run centralizers on every other joint above the shoe. Apply thread lock to bottom two joints and guide shoe.
3. Wait on cement four hours prior to cutting off.
4. Nipple up a annular BOP system and test casing to 600 psi.
5. Drill a 12 1/4" hole to approximately 4130'.
6. Run 8 5/8" 32.0 ppf K-55 ST&C casing. Cement with 1750 sx Cl "C" Lite containing 12 pps salt and 1/4 pps celloflake followed by 250 sx Class "C" with 2% CaCl<sub>2</sub>. Run guide shoe on bottom and float collar two joints of bottom. Centralize every other joint for bottom 400' of casing and place two centralizers in surface casing. Thread lock bottom 2 joints.
7. Wait on cement for six hours prior to cutting off.
8. Nipple up and install a 3000 psi. Double Ram and Annular BOP system with choke manifold.
9. Test BOP system to 3000 psi. Test casing to 1500 psi.
10. Drill 7 7/8" hole to 8200'. Run logs.
11. Either run and cement 5 1/2" 15.50 ppf K-55 LT&C casing or plug and abandon as per BLM requirements.

Exhibit A  
Santa Fe Energy Operating Partners,L.P.  
North Pure Gold 8 Federal No. 3  
Section 8, T-23S, R-31E  
Eddy County, New Mexico

TJM:NPG8

PROPOSED 3-M BOPE AND CHOKE ARRANGEMENT

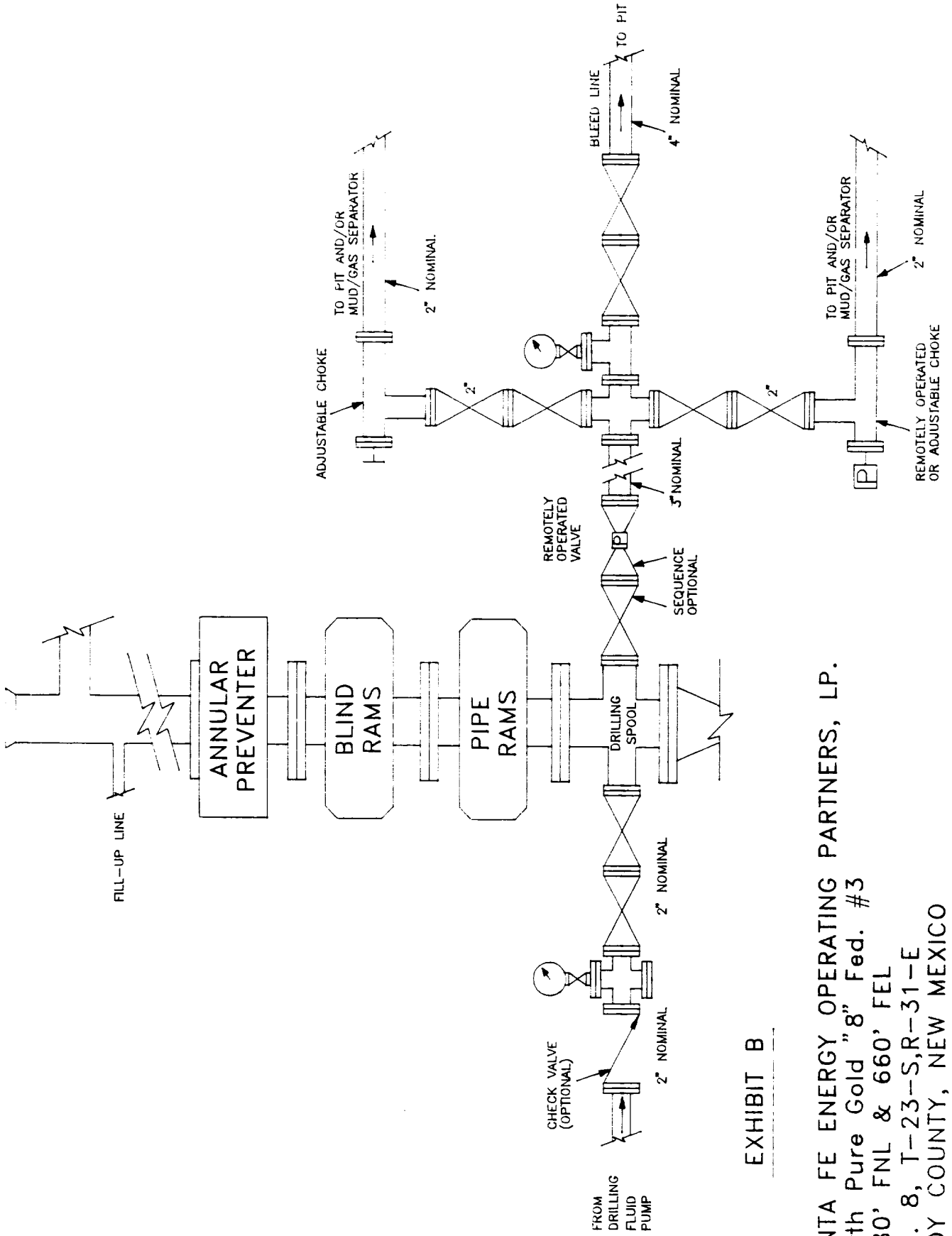


EXHIBIT B

SANTA FE ENERGY OPERATING PARTNERS, LP.  
 North Pure Gold "8" Fed. #3  
 1980' FNL & 660' FEL  
 Sec. 8, T-23-S,R-31-E  
 EDDY COUNTY, NEW MEXICO

## PROPOSED DRILLING FLUID PROGRAM

0 - 600'

Spud mud consisting of fresh water gel flocculated with Lime. Use ground paper for seepage control and to sweep the hole. MW-8.5 ppg and Vis-40.

600-4130'

Drill out with brine water circulating the inner portion of the reserve pit. Utilize ground paper mixed in prehydrated fresh gel to sweep the hole. MW-10.0 ppg and Vis-28.

4130-8200'

Drill out with cut brine (30,000 ppm chlorides minimum) circulating the outer portion of the reserve pit. Maintain pH at 8.5-9.5 with caustic and sweep the hole as necessary with ground paper. If it becomes necessary to mud up due to hole conditions, utilize a cut brine/Drispac system for 15-20 WL and a Vis of 30-32. MW-8.5/8.9 ppg.

Exhibit C  
Santa Fe Energy Operating Partners, L.P.  
North Pure Gold 8 Federal No. 3  
Section 8, T-23S, R-31E  
Eddy County, New Mexico

TJM:NPG8

## AUXILIARY EQUIPMENT

DRAWWORKS BDW 650M 650 HP, with Parmac Hydromatic brake

ENGINES Two Caterpillar D-353 diesels rated at 425 HP each

ROTARY Ideco 23", 300 ton capacity

MAST/SUB Ideal 132', 550,000 lb rated static hook load with 10 line Wagner 15' high substructure

TRAVELLING EQUIPMENT Gardner-Denver, 300 ton, 5 sheave w/ BJ 250 ton hook. Brewster Model 7 SX 300 ton swivel.

PUMPS Continental-EMSCO DC-700 and DB-550, 5 1/2 X 16" Duplex, Compound driven.

PIT SYSTEM 1-Shale Pit 6X7X35', 1-Settling Pit 6X7X38', 1-Suction Pit 6X7X34' w/ 5 mud agitators. Two centrifugal mud mixing pumps and a Double Screen Shale Shaker.

LIGHT PLANT Two CAT 3306 diesel electric sets 180 KW prime power.

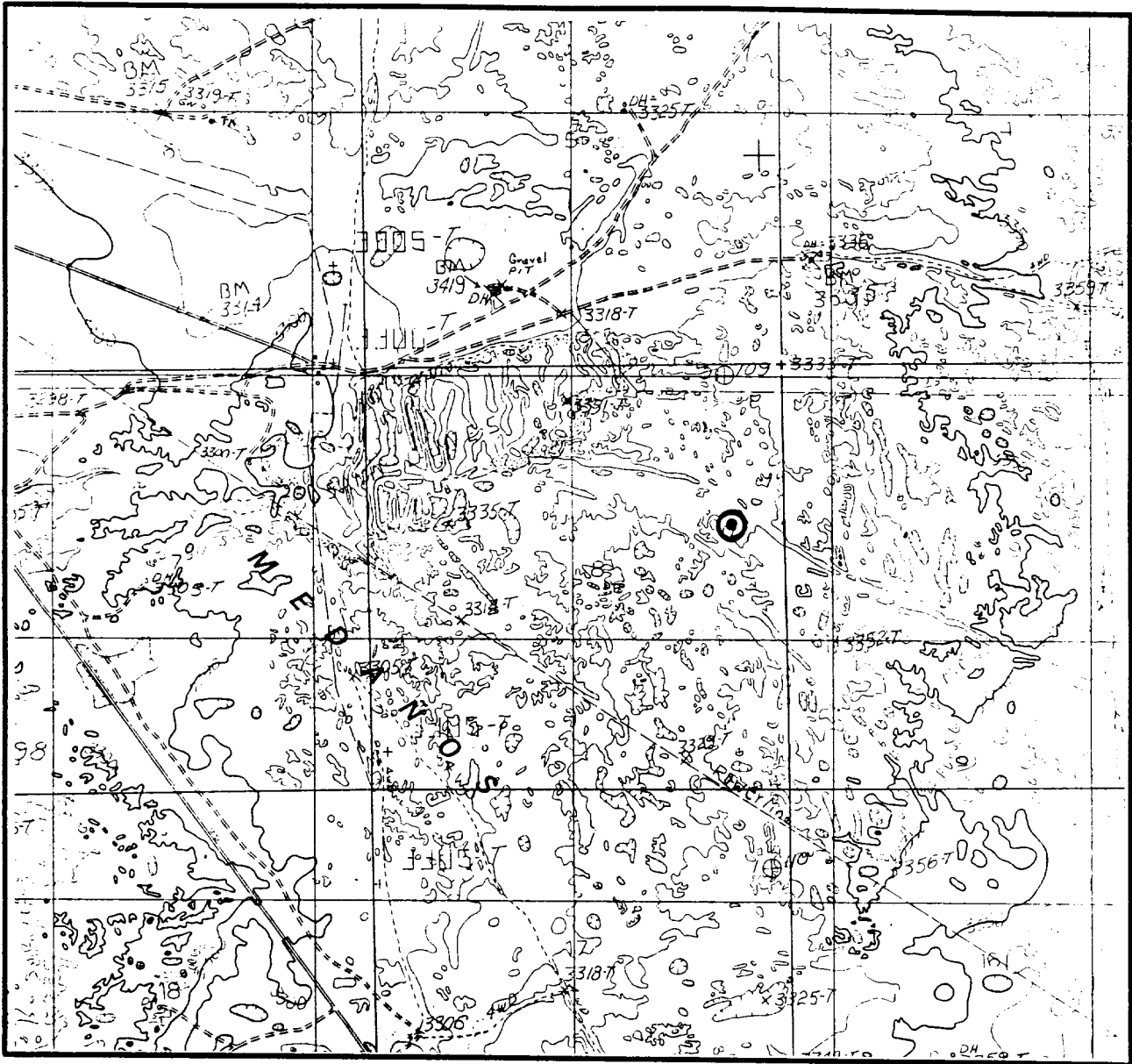
BOP EQUIP 13 5/8" 5000 psi WP double ram and 13 5/8" 5000 psi WP Shaffer Annular Preventer. Choke manifold rated at 5000 psi. Valvcon 5-station 80 gallon closing unit.

Exhibit D  
Santa Fe Energy Operating Partners, L.P.  
North Pure Gold 8 Federal No. 3  
Section 8, T-23S, R-31E  
Eddy County, New Mexico

DDR/tjm  
NPG8



# LOCATION & ELEVATION VERIFICATION MAP



SCALE : 1" = 2000'

CONTOUR INTERVAL 10'

## EXHIBIT E

SANTA FE ENERGY OPERATING PARTNERS, LP.  
North Pure Gold "8" Fed. #3  
1980' FNL & 660' FEL  
Sec. 8, T-23-S,R-31-E  
EDDY COUNTY, NEW MEXICO

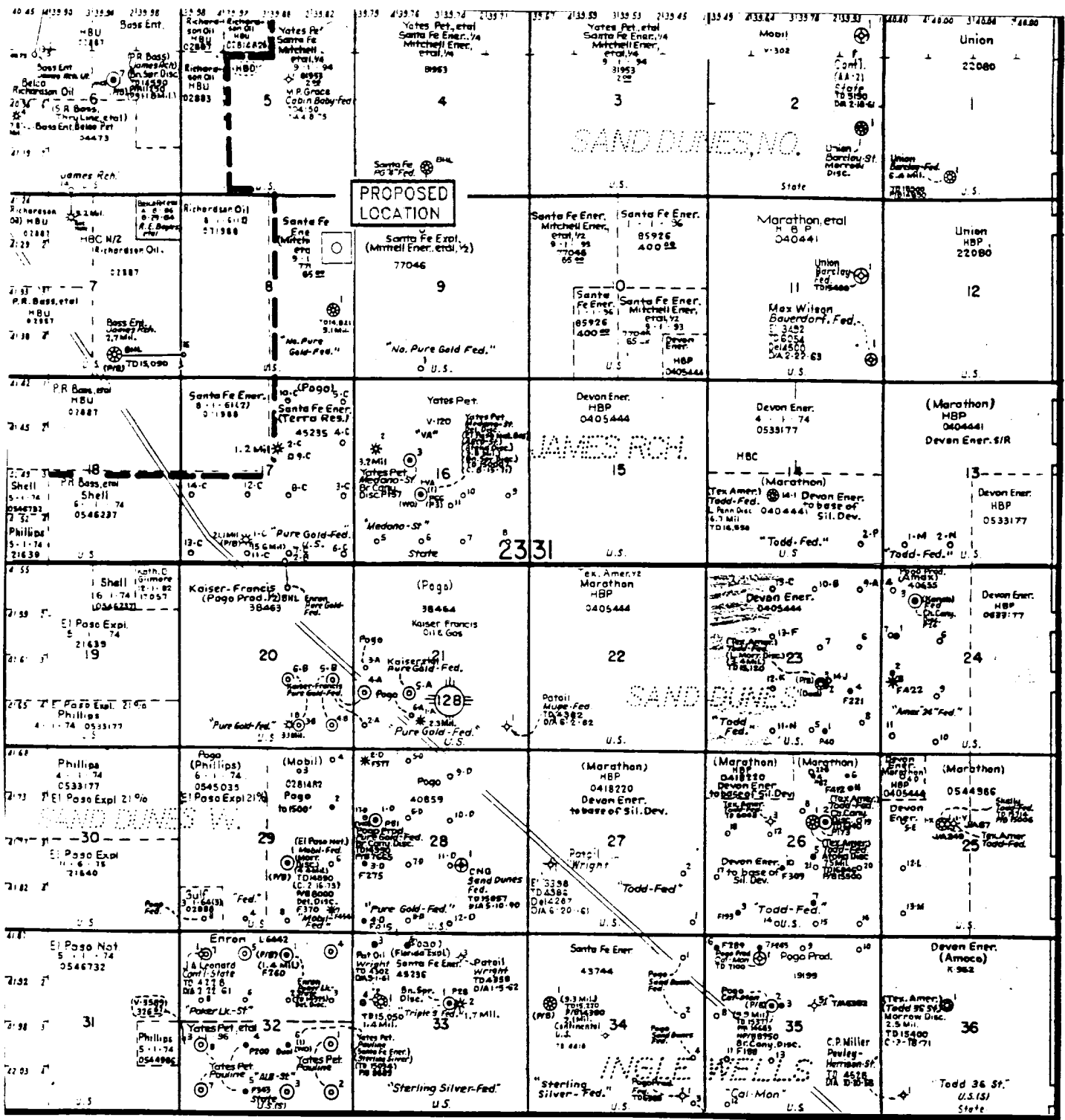


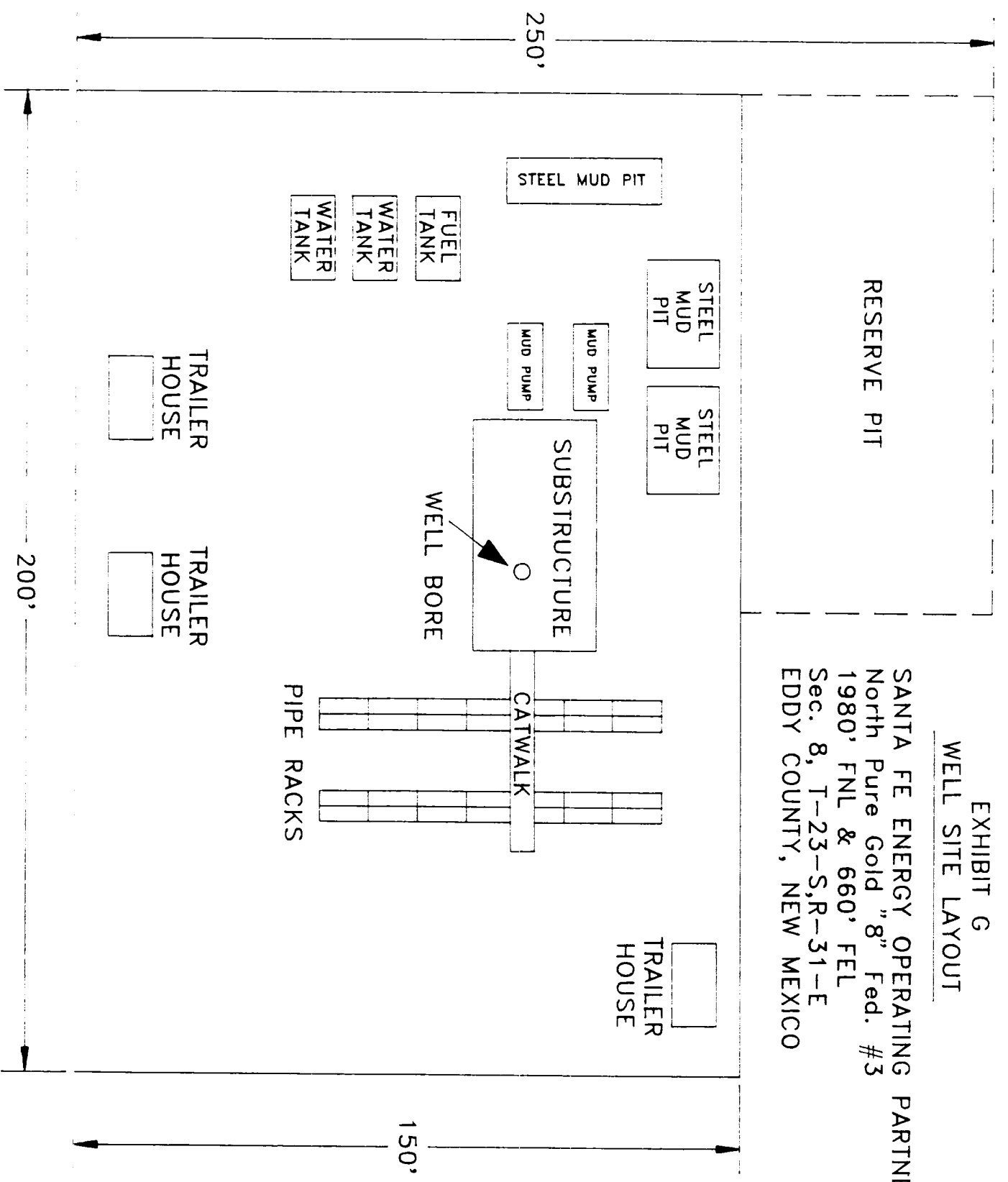
EXHIBIT F

SANTA FE ENERGY OPERATING PARTNERS, LP.  
 North Pure Gold "8" Fed. #3  
 1980' FNL & 660' FEL  
 Sec. 8, T-23-S,R-31-E  
 EDDY COUNTY, NEW MEXICO

EXHIBIT G  
WELL SITE LAYOUT

SANTA FE ENERGY OPERATING PARTNERS, LP.  
North Pure Gold "8" Fed. #3  
1980' FNL & 660' FEL  
Sec. 8, T-23-S,R-31-E  
EDDY COUNTY, NEW MEXICO

RESERVE PIT



**MULTI-POINT SURFACE USE AND OPERATIONS PLAN**  
**SANTA FE ENERGY OPERATING PARTNERS,L.P.**  
**North Pure Gold 8 Federal No. 3**  
**1980' FNL & 660' FEL**  
**Section 8, T-23S, R-31E**  
**Eddy County, New Mexico**

This plan is submitted with Form 3160-3, Application for Permit to Drill, covering the above described well. The purpose of this plan is to describe the location of the proposed well, the proposed construction activities and operations plan, the magnitude of necessary surface disturbance involved, and the procedures to be followed by rehabilitating the surface after completion of the operations, so that a complete appraisal can be made of the environmental effects associated with the operation.

1. EXISTING ROADS.

- A. Exhibit E is a 15 minute topographic map which shows location of the proposed wellsite and roads in the vicinity. The proposed location is situated approximately 18 miles northeast of Loving, New Mexico.

DIRECTIONS:

1. From the junction of State Highway 128 and the Lea/Eddy County line, go 6.1 miles West on State Highway 128. Turn northeasterly onto existing lease road and travel 0.4 mile, then northwesterly 0.4 mile, then northeasterly 0.7 mile, then northwesterly 0.2 mile on lease road to a point 200' northeast of the location.

2. PLANNED ACCESS ROAD.

No access road is required.

3. LOCATION OF EXISTING WELLS.

- A. The Well Locations in the vicinity of the proposed well are shown Exhibits E & F.

4. LOCATION OF EXISTING AND/ OR PROPOSED FACILITIES.

- A. There is one producing gas well (North Pure Gold 8 Fed. No. 1) on this lease at this time.
- B. In the event the well is productive, the necessary production equipment will be installed on the drilling pad. If the well is productive of oil, a gas or diesel self-contained unit will be used to the necessary power.

## Multi-Point Surface Use and Operations Plan

North Pure Gold 8 Federal No. 3

Page 2

### 5. LOCATION AND TYPE OF WATER SUPPLY

- A. It is planned to drill the well with both fresh water and brine water systems. Both types of waters will be hauled to the location by truck over existing roads. Both types will be obtained from commercial sources.

### 6. SOURCES OF CONSTRUCTION MATERIALS.

- A. Any caliche required for construction of the drilling pad will be obtained from a pit located in NW/4 of SW/4 Section 20, which is 3/4 mile south on Twin Wells Road.

### 7. METHODS OF HANDLING WASTE DISPOSAL

- A. Drill cuttings will be disposed of in the reserve pits.
- B. Drilling fluids will be allowed to evaporate in the reserve pits until the pits are dry.
- C. Water produced during operations will be either placed in the reserve pits and allowed to evaporate or collected in tanks until hauled to an approved disposal system or a separate disposal application will be submitted to the BLM for appropriate approval.
- D. Oil produced during operations will be stored in tanks until sold.
- E. Human waste will be disposed of per current standards.
- F. Trash, waste paper, garbage, and junk will be collected in trash trailers and disposed of in an approved waste facility such as a land fill. The trash trailers contain all of the material to prevent scattering by the wind.
- G. All debris will be removed from the wellsite within 30 days after finishing drilling and/or completion operations.

### 8. ANCILLARY FACILITIES.

None required

### 9. WELLSITE LAYOUT

- A. Exhibit G shows the dimensions of the well pad and reserve pits, and the location of major rig components.

## Multi-Point Surface Use and Operations Plan

North Pure Gold 8 Federal No. 3

Page 3

- B. The ground surface of the location is located among several sand dunes with vegetation growing on them. The location will be constructed by leveling the necessary dune and covering the sand with at least six inches of compacted caliche.
  - C. The reserve pits will be plastic lined.
  - D. A 400' X 400' work area which will contain the pad and pit area has been staked and flagged.
10. PLAN FOR RESTORATION OF THE SURFACE.
- A. After finishing drilling and/or completion operations, all equipment and other material not needed for further operations will be removed. The location will be cleared of all trash and junk, to leave the wellsite in an aesthetically pleasing condition as possible.
  - B. Unguarded pits, if any, containing fluid will be fenced until they have been filled.
  - C. If the proposed well is non-productive, all rehabilitation and/or vegetation requirements of the Bureau of Land Management and the United States Geological Survey will be complied with and will be accomplished as expeditiously as possible. All pits will be filled and levelled within 300 days after abandonment.
11. TOPOGRAPHY
- A. The wellsite and access route are located in a relatively flat area.
  - B. The top soil at the wellsite is sandy.
  - C. The vegetation cover at the wellsite is moderately sparse, with prairie grasses, some mesquite bushes, and shinnery oak.
  - D. No wildlife was observed but it is likely that deer, rabbits, coyotes, and rodents traverse the area.
  - E. There are no ponds, lakes, streams, or rivers within one mile of the wellsite.
  - F. There is no evidence of any archaeological, historical, or cultural sites in the vicinity of the location.

**Multi-Point Surface Use and Operations Plan**

North Pure Gold 8 Federal No. 3

Page 4

12. OPERATOR'S REPRESENTATIVES.

- A. The field representatives responsible for assuring compliance with the approved surface use plan are:

Michael R. Burton	Darrell Roberts
Division Operations Manager	Senior Drilling Engineer
Santa Fe Energy Operating Partners, L.P.	Santa Fe Energy Operating Partners, L.P.
550 W. Texas, Suite 1330	550 W. Texas, Suite 1330
Midland, Texas 79701	Midland, Texas 79701
915-686-6616 - office	915-686-6614 - office
915-699-1260 - home	915-684-4130 - home
915-559-6842 - cellular	915-553-1214 - cellular

13. CERTIFICATION

I hereby certify that I, or persons under my direct supervision, have inspected the proposed drill site and access route; that I am familiar with the conditions which presently exist; that the statements made in this plan are, to the best of my knowledge, true and correct; and that the work associated with the operations proposed herein will be performed by Santa Fe Energy Operating Partners, L.P., and its contractors and subcontractors in conformity with this plan and the terms and conditions under which it is approved.

SIGNED this 7<sup>TH</sup> day of April, 1993. *Darrell Roberts*  
Darrell Roberts, Senior Drilling Engineer

DDR/tjm  
NPG8

**NM OIL CONS. COMMISSION  
DRAWER DD  
ARTESIA, NM 88210**

Form 3160-5  
June 1990

**UNITED STATES  
DEPARTMENT OF THE INTERIOR  
BUREAU OF LAND MANAGEMENT**

FORM APPROVED  
Budget Bureau No. 1004-0135  
Expires: March 31, 1993

5. Lease Designation and Serial No.  
NM-77046

6. If Indian, Allottee or Tribe Name

7. If Unit or CA, Agreement Designation

**SUNDRY NOTICES AND REPORTS ON WELLS**

Do not use this form for proposals to drill or to deepen or reentry to a different reservoir.  
Use "APPLICATION FOR PERMIT—" for such proposals

**SUBMIT IN TRIPLICATE**

1. Type of Well <input checked="" type="checkbox"/> Oil Well <input type="checkbox"/> Gas Well <input type="checkbox"/> Other		8. Well Name and No. <u>North Pure Gold 8 Fed #3</u>
2. Name of Operator <u>Santa Fe Energy Operating Partners, L.P.</u>		9. API Well No. <u>Not assigned</u>
3. Address and Telephone No. <u>550 W. Texas, Suite 1330, Midland, TX 79701 (915) 687-3551</u>		10. Field and Pool, or Exploratory Area <u>Los Medanos (Delaware)</u>
4. Location of Well (Footage, Sec., T., R., M., or Survey Description) <u>(H), 1780' FNL and 660 FEL, Sec. 8, T-23S, R-31E</u>		11. Country or Parish, State <u>Eddy Co., NM</u>

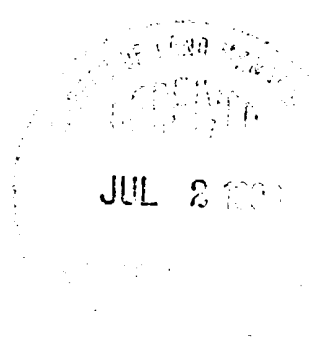
**CHECK APPROPRIATE BOX(S) TO INDICATE NATURE OF NOTICE, REPORT, OR OTHER DATA**

TYPE OF SUBMISSION	TYPE OF ACTION	
<input checked="" type="checkbox"/> Notice of Intent	<input type="checkbox"/> Abandonment	<input type="checkbox"/> Change of Plans
<input type="checkbox"/> Subsequent Report	<input type="checkbox"/> Recompletion	<input type="checkbox"/> New Construction
<input type="checkbox"/> Final Abandonment Notice	<input type="checkbox"/> Plugging Back	<input type="checkbox"/> Non-Routine Fracturing
	<input type="checkbox"/> Casing Repair	<input type="checkbox"/> Water Shut-Off
	<input type="checkbox"/> Altering Casing	<input type="checkbox"/> Conversion to Injection
	<input checked="" type="checkbox"/> Other <u>Move location</u>	<input type="checkbox"/> Dispose Water

(Note: Report results of multiple completion on Well Completion or Recommendation Report and Log form.)

13. Describe Proposed or Completed Operations (Clearly state all pertinent details, and give pertinent dates, including estimated date of starting any proposed work. If well is directionally drilled, give subsurface locations and measured and true vertical depths for all markers and zones pertinent to this work.)\*

Santa Fe Energy Oper. Part., L.P. respectfully requests that the proposed location of this well be moved due to archaeological reasons. Attached is a revised plat.



14. I hereby certify that the foregoing is true and correct.

Signed [Signature] Title Sr. Production Clerk Date July 1, 1993

(This space for Federal or State office use)

Approved by \_\_\_\_\_ Title \_\_\_\_\_ Date \_\_\_\_\_

Conditions of approval, if any:

Title 18 U.S.C. Section 1001, makes it a crime for any person knowingly and willfully to make to any department or agency of the United States any false, fictitious or fraudulent statement or representations as to any matter within its jurisdiction.

**\*See instruction on Reverse Side**



**DISTRICT I**  
 P. O. Box 1980  
 Hobbs, NM 88240

**OIL CONSERVATION DIVISION**  
 P. O. Box 2088  
 Santa Fe, New Mexico 87504-2088

**DISTRICT II**  
 P. O. Drawer DD  
 Artesia, NM 88210

**DISTRICT III**  
 1000 Rio Brazos Rd  
 Aztec, NM 87410

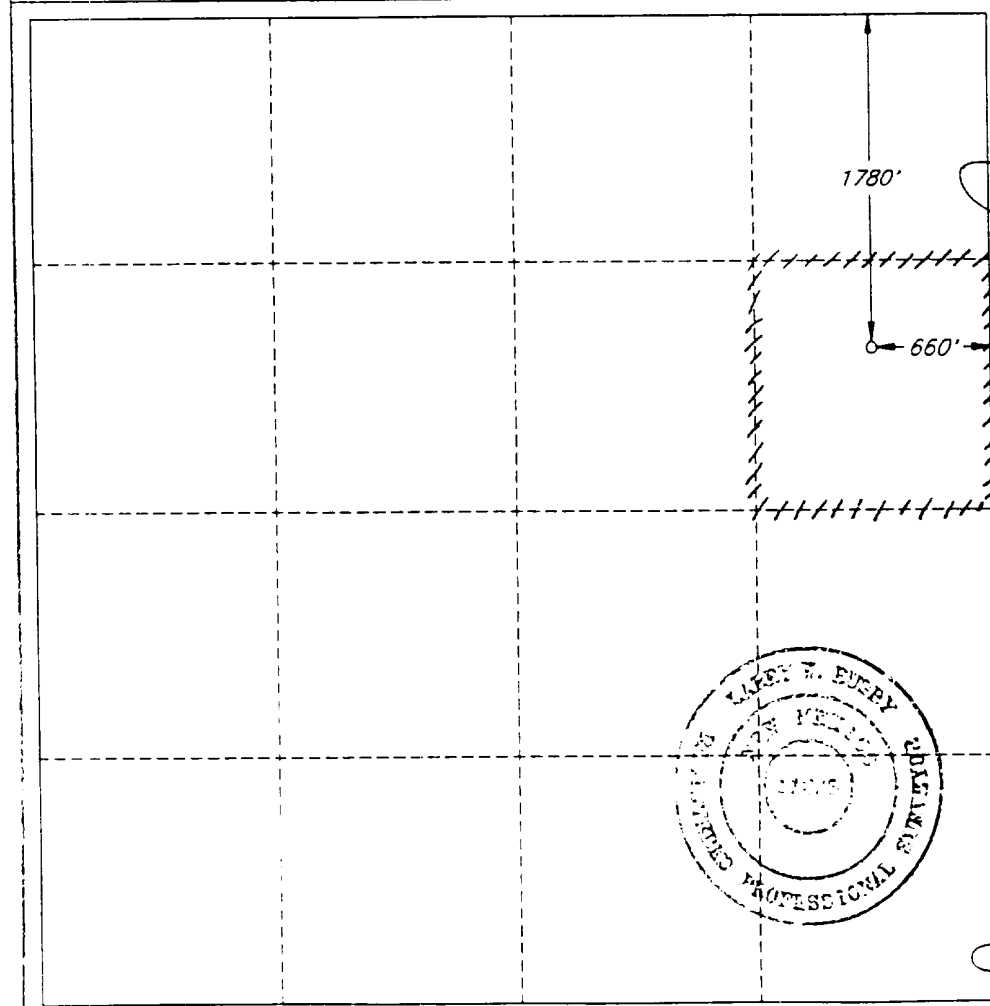
**WELL LOCATION AND ACREAGE DEDICATION PLAT**  
 All distances must be from the outer boundaries of the section.

Operator <b>SANTA FE ENERGY OPER. PART, L.P.</b>		Lease <b>NORTH PURE GOLD '8' FEDERAL</b>		Well No. <b>3</b>
Unit Letter <b>H</b>	Section <b>8</b>	Township <b>23 SOUTH</b>	Range <b>31 EAST, N.M.P.M.</b>	County <b>EDDY</b>

Actual Footage Location of Well  
**1780** feet from the **NORTH** line and **660** feet from the **EAST** line

Ground Level Elev. <b>3313'</b>	Producing Formation <b>Delaware</b>	Pool <b>Los Medanos (Delaware)</b>	<b>40</b> Acres
------------------------------------	--	---------------------------------------	-----------------

- Outline the acreage dedicated to the subject well by colored pencil or hachure marks on the plat below.
- If more than one lease is dedicated to the well, outline each and identify the ownership thereof (both as to working interest and royalty).
- If more than one lease of different ownership is dedicated to the well, have the interest of all the owners been consolidated by communitization, unitization, forced-pooling, etc.?
  - Yes  No If answer is "yes", type of consolidation \_\_\_\_\_
  - If the answer is "no", list the owners and tract descriptions which have actually been consolidated. (Use the reverse side of this form if necessary.) \_\_\_\_\_
 No allowable will be assigned to the well until all interests have been consolidated (by communitization, unitization, forced-pooling, or otherwise) or until a non-standard unit, eliminating such interest, has been approved by the division.



**OPERATOR CERTIFICATION**

I hereby certify that the information herein is true and complete to the best of my knowledge and belief.

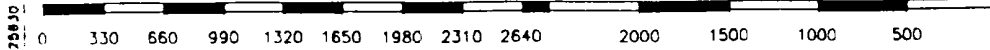
Signature: *Terry McCullough*  
 Printed Name: Terry McCullough  
 Position: Sr. Production Clerk  
 Company: Santa Fe Energy Operating Partners, L.P.  
 Date: July 1, 1993

**SURVEYOR CERTIFICATION**

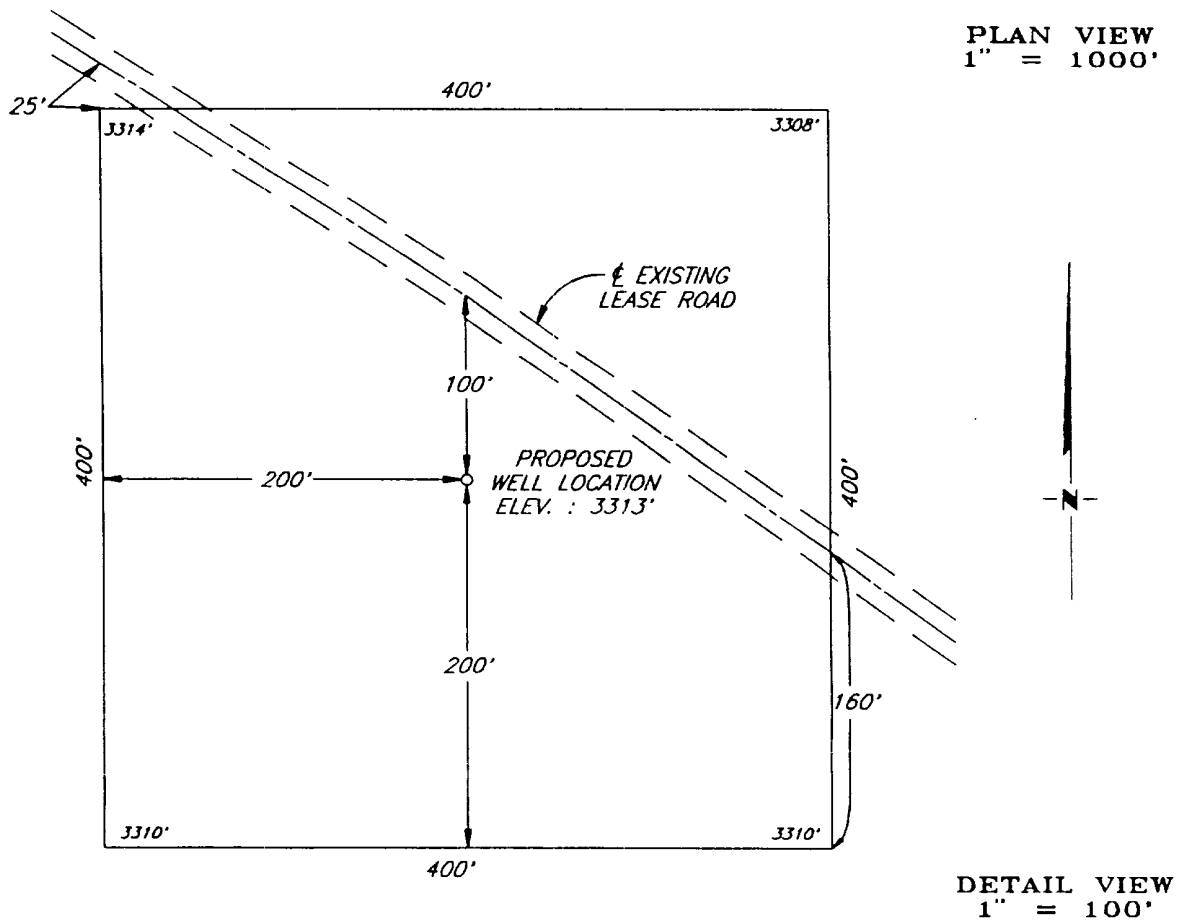
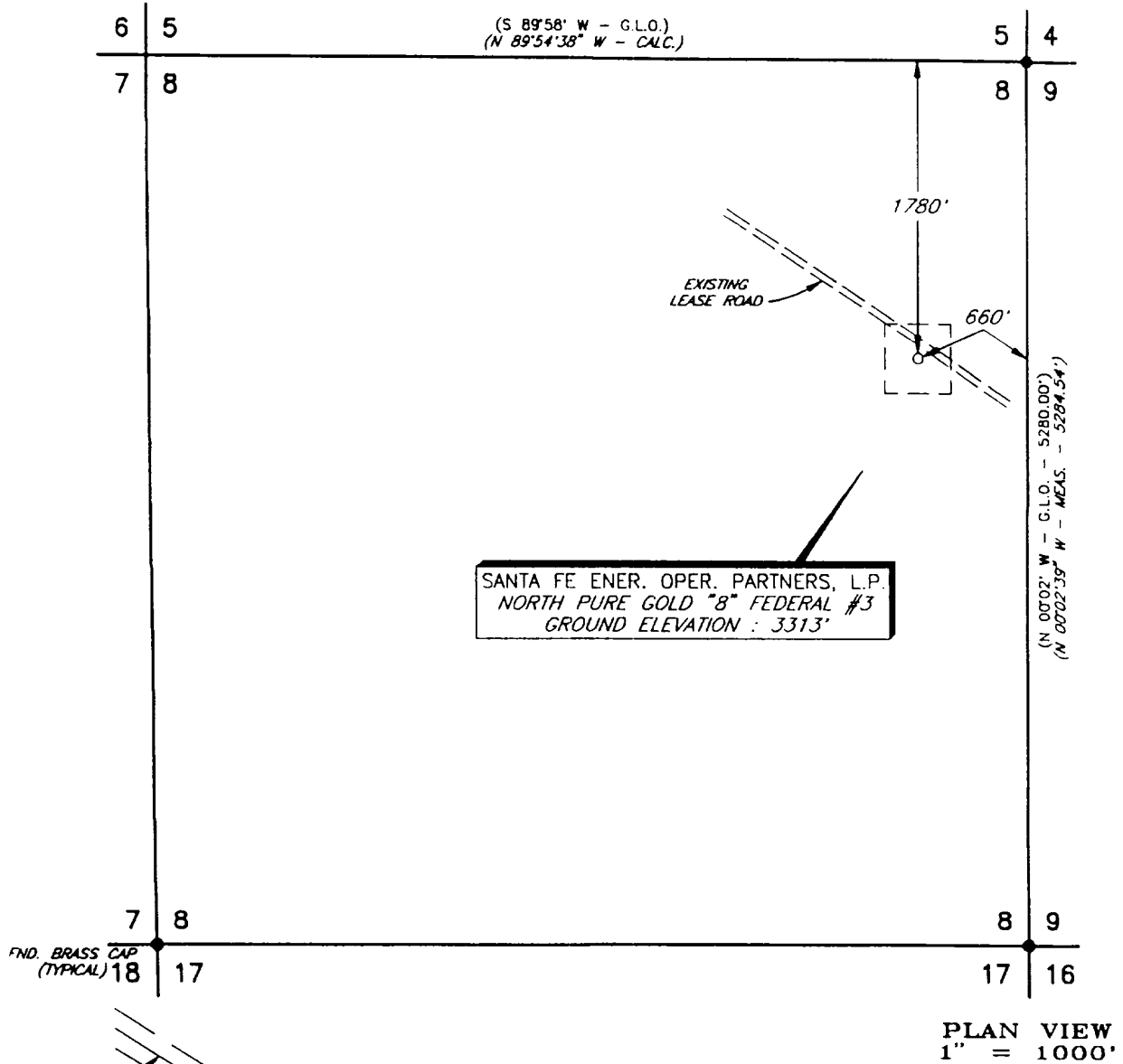
I hereby certify that the well location shown on this plat was plotted from field notes of actual surveys made by me or under my supervision, and that the same is true and correct to the best of my knowledge and belief.

Date Surveyed: JUNE 25, 1993  
 Signature and Seal of Professional Surveyor: *Larry W. Busby*

Certificate No. LARRY W. BUSBY R.P.S. #11398  
 JOB NO. 97088 V.H.B.



PLAT SHOWING PROPOSED  
WELL LOCATION AND LL SE ROAD IN  
SECTION 8, T-23-S, R-31-E, N.M.P.M.  
EDDY COUNTY, NEW MEXICO



				<b>SANTA FE ENER. OPER. PARTNERS, L.P.</b> MIDLAND, TEXAS	SCALE: AS SHOWN
					DATE: JUNE 25, 1993
NO.	REVISION	DATE	BY	JOB NO.: 97088	
SURVEYED BY: R.J.O.		SURVEYING AND MAPPING BY <b>TOPOGRAPHIC LAND SURVEYORS</b> MIDLAND, TEXAS			48 SE
DRAWN BY: V.H.B.					SHEET : 1 OF 1
APPROVED BY: L.W.B.					