

OIL CONSERVATION DIVISION

P.O. Box 2088
Santa Fe, New Mexico 87504-2088

DISTRICT I

P.O. Box 1980, Hobbs, NM 88240

DISTRICT II

P.O. Drawer DD, Artesia, NM 88210

DISTRICT III

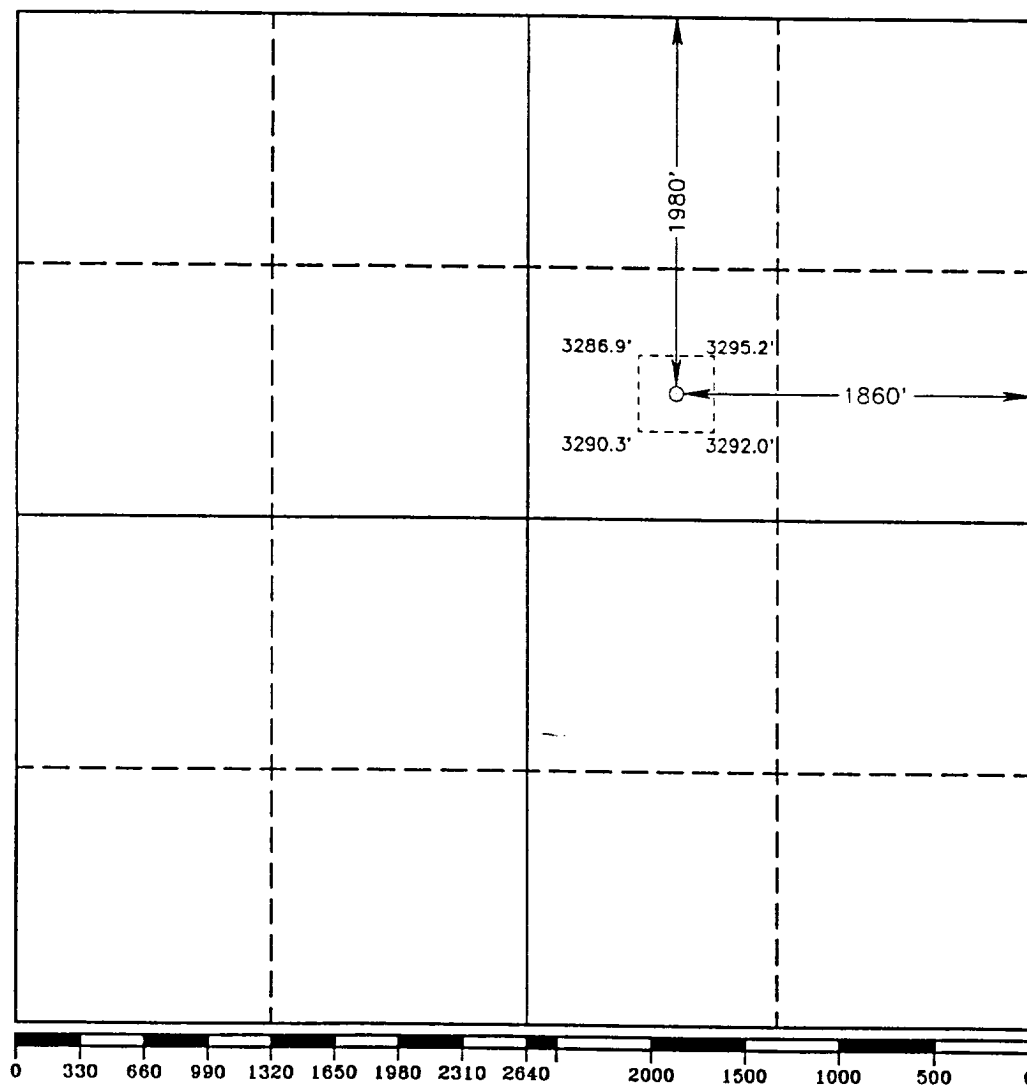
000 Rio Brazos Rd., Aztec, NM 87410

WELL LOCATION AND ACREAGE DEDICATION PLAT

All Distances must be from the outer boundaries of the section

Operator ENRON OIL AND GAS COMPANY			Lease JAMES RANCH UNIT		Well No. 36
Unit Letter G	Section 1	Township 23 SOUTH	Range 30 EAST	County EDDY	
Actual Footage Location of Well:					
1980 feet from the NORTH line and		1860 feet from the EAST line			
Ground Level Elev. 3292.9'	Producing Formation Bone Spring/Delaware		Pool Undesignated	Dedicated Acreage: 40 Acres	

1. Outline the acreage dedicated to the subject well by colored pencil or hatchure marks on the plat below.
 2. If more than one lease is dedicated to the well, outline each and identify the ownership thereof (both as to working interest and royalty).
 3. If more than one lease of different ownership is dedicated to the well, have the interest of all owners been consolidated by communitization, unitization, force-pooling, etc.?
☐ Yes ☐ No If answer is "yes" type of consolidation _____
- If answer is "no" list of owners and tract descriptions which have actually been consolidated. (Use reverse side of this form necessary.)
- No allowable will be assigned to the well unit all interests have been consolidated (by communitization, unitization, forced-pooling, otherwise) or until a non-standard unit, eliminating such interest, has been approved by the Division.



OPERATOR CERTIFICATION

I hereby certify the the information contained herein is true and complete to the best of my knowledge and belief.

Signature

Betty Gildon

Printed Name

Betty Gildon

Position

Regulatory Analyst

Company

Enron Oil & Gas Company

Date

6/3/93

SURVEYOR CERTIFICATION

I hereby certify that the well location shown on this plat was plotted from field notes of actual surveys made by me or under my supervision, and that the same is true and correct to the best of my knowledge and belief.

Date Surveyed

MAY 27, 1993

Signature & Seal of
Professional Surveyor

