

Submit to Appropriate
District Office
State Lease - 4 copies
Fee Lease - 3 copies

State of New Mexico
Energy, Minerals and Natural Resources Department

Form C-102
Revised 1-1-89

OIL CONSERVATION DIVISION

DISTRICT I
P.O. Box 1980, Hobbs, NM 88240

P.O. Box 2088
Santa Fe, New Mexico 87504-2088

DISTRICT II
P.O. Drawer DD, Artesia, NM 88210

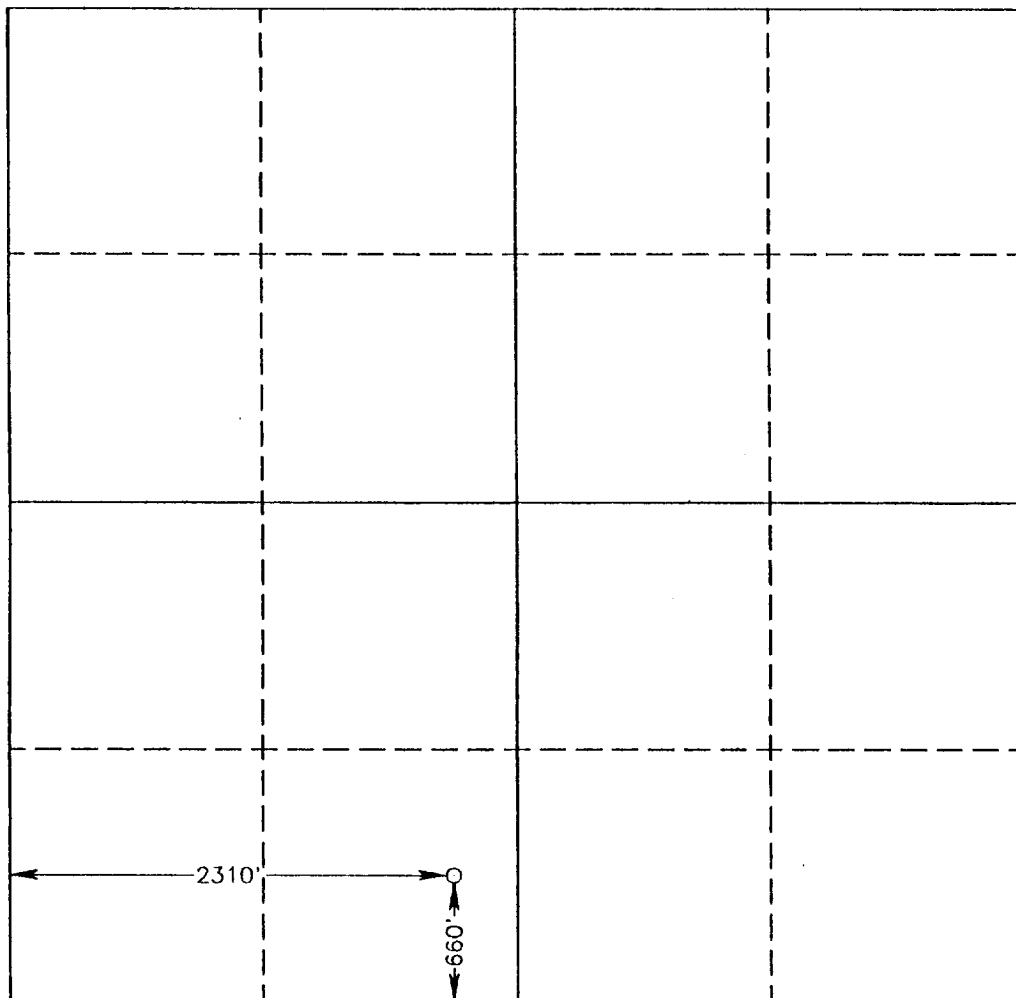
DISTRICT III
1000 Rio Brazos Rd., Aztec, NM 87410

WELL LOCATION AND ACREAGE DEDICATION PLAT

All Distances must be from the outer boundaries of the section

Operator BASS ENTERPRISES			Lease JAMES RANCH UNIT		Well No. 41
Unit Letter N	Section 36	Township 22 SOUTH	Range 30 EAST	County NMPM	EDDY
Actual Footage Location of Well: 660 feet from the SOUTH line and 2310 feet from the WEST line					
Ground Level Elev. 3297.4'	Producing Formation DELAWARE		Pool UNO, QUAHADA RIDGE, SE		Dedicated Acreage: 40 Acres

1. Outline the acreage dedicated to the subject well by colored pencil or hachure marks on the plat below.
2. If more than one lease is dedicated to the well, outline each and identify the ownership thereof (both as to working interest and royalty).
3. If more than one lease of different ownership is dedicated to the well, have the interest of all owners been consolidated by communitization, unitization, force-pooling, etc.?
☐ Yes ☐ No If answer is "yes" type of consolidation _____
If answer is "no" list of owners and tract descriptions which have actually been consolidated. (Use reverse side of this form necessary.)
No allowable will be assigned to the well unit all interests have been consolidated (by communitization, unitization, forced-pooling, otherwise) or until a non-standard unit, eliminating such interest, has been approved by the Division.



OPERATOR CERTIFICATION

I hereby certify that the information contained herein is true and complete to the best of my knowledge and belief.

Signature
William R. Dannels
Printed Name
W.R. Dannels
Position
Div. Drilling Specialist
Company
Bass Enterprises Prod. Co.
Date
9-24-93

SURVEYOR CERTIFICATION

I hereby certify that the well location shown on this plat was plotted from field notes of actual surveys made by me or under my supervision, and that the same is true and correct to the best of my knowledge and belief.

Date Surveyed
SEPTEMBER 09, 1993

Signature & Seal of
Professional Surveyor

Certificate of
GARY L. JONES
NEW MEXICO
1977
JOHN W. WEST
DONALD J. EIDSON
1977

93-11-1782