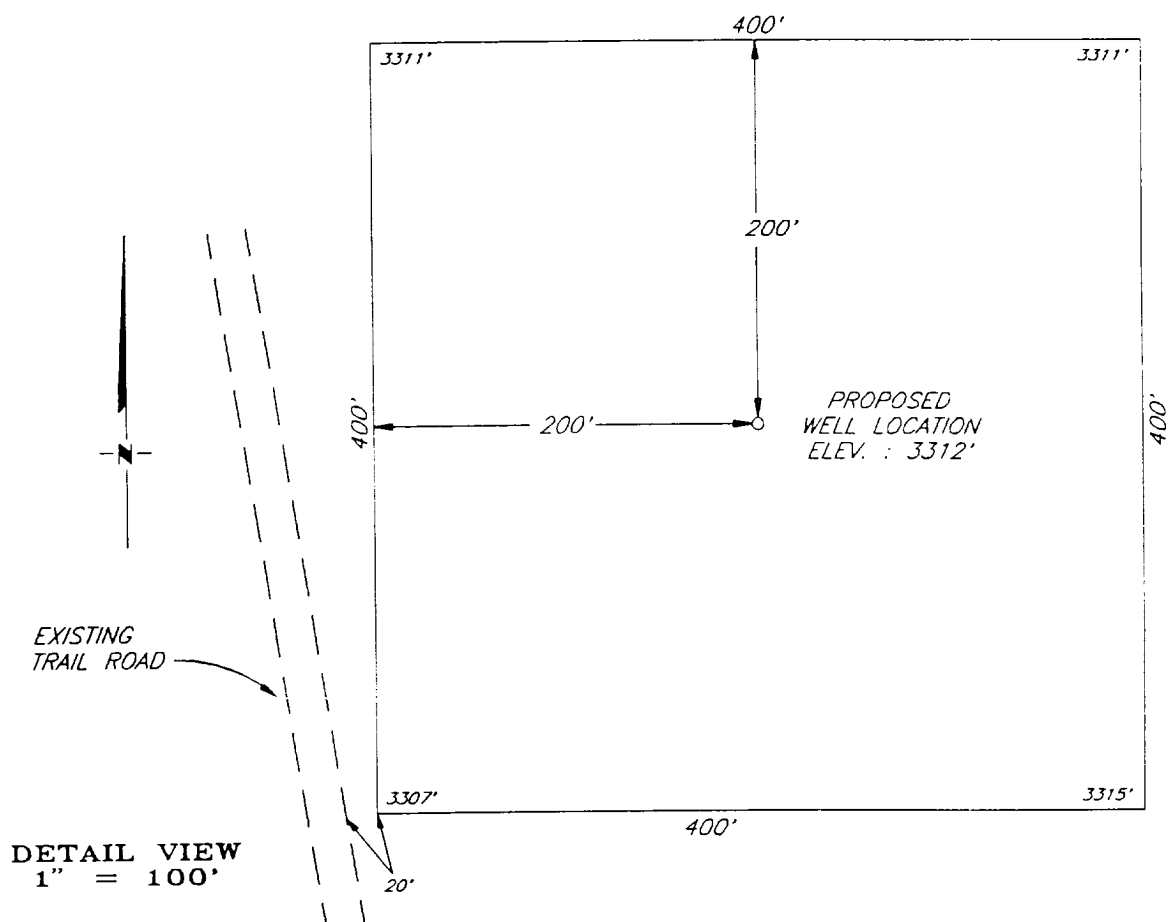
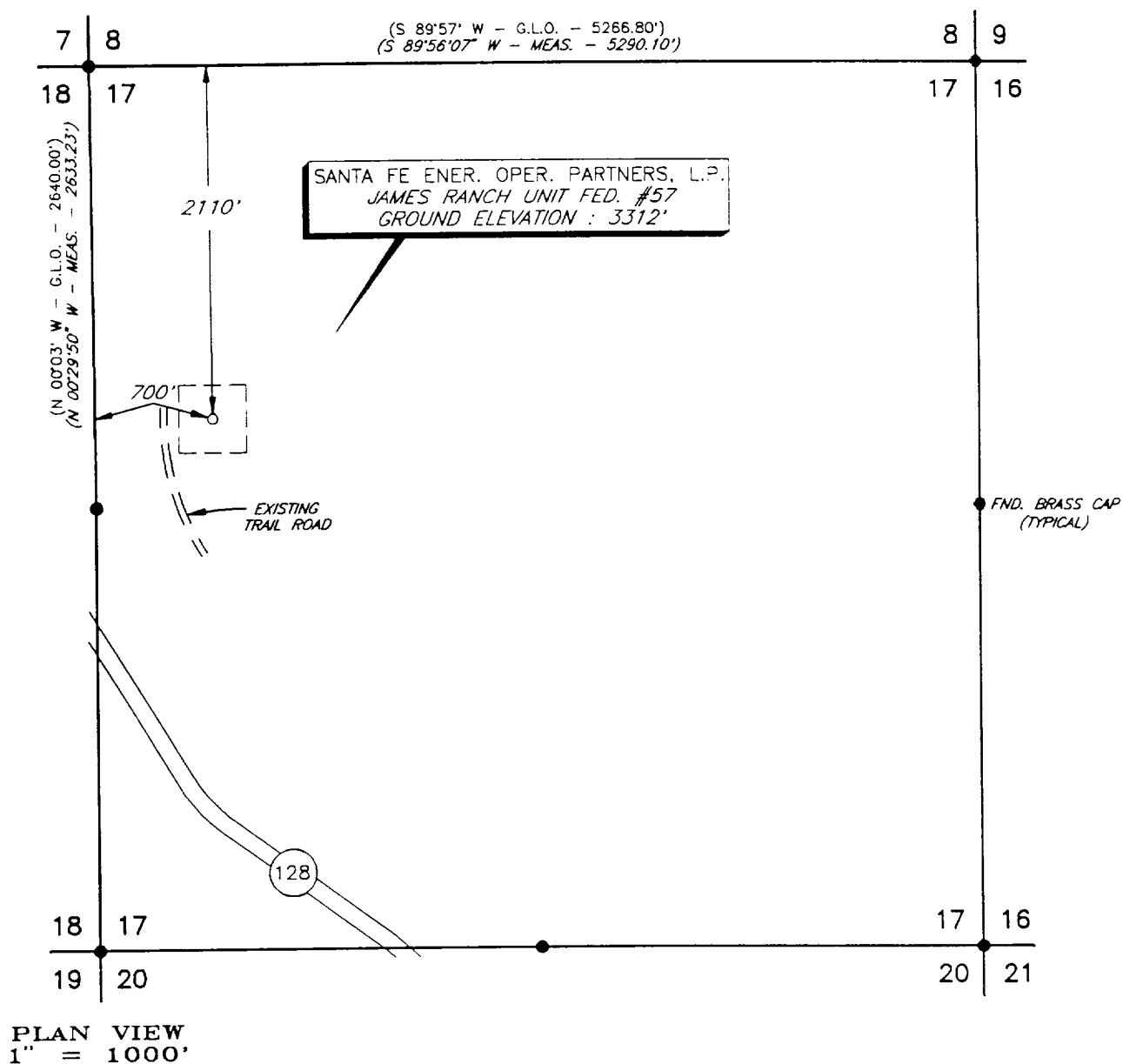


PLAT SHOWING PROPOSED
WELL LOCATION AND LEASE ROAD IN
SECTION 17, T-23-S, R-31-E, N.M.P.M.
EDDY COUNTY, NEW MEXICO



				SANTA FE ENER. OPER. PARTNERS, L.P. <i>MIDLAND, TEXAS</i>	SCALE: AS SHOWN
					DATE: JANUARY 18, 1994
NO.	REVISION	DATE	BY		JOB NO.: 31252
SURVEYED BY: B.B.		<i>SURVEYING AND MAPPING BY</i> TOPOGRAPHIC LAND SURVEYORS <i>MIDLAND, TEXAS</i>			
DRAWN BY: C.L.S.					48 SE
APPROVED BY: V.L.B.					SHEET : 1 OF 1