

NM OIL CONS. COMMISSION
DRAWER DD
ARTESIA, NM 88210

Form 3160-3
(December 1990)

UNITED STATES
DEPARTMENT OF THE INTERIOR
BUREAU OF LAND MANAGEMENT

RECEIVED

FORM APPROVED
Budget Bureau No. 1004-0136
Expires: December 31, 1991

SUBMIT IN TRIPLICATE

SEP 16 '94

APPLICATION FOR PERMIT TO DRILL OR DEEPEN D.

1a. Type of Work DRILL ☒ DEEPEN ☐
1b. Type of Well OIL WELL ☒ GAS WELL ☐ OTHER ☐
2. Name of Operator TEXACO EXPLORATION & PRODUCTION INC.

3. Address and Telephone No. P.O. Box 3109, Midland Texas 79702 688-4608

4. Location of Well (Report location clearly and in accordance with any State requirements. *)
At Surface
Unit Letter C : 660 Feet From The NORTH Line and 1980 Feet From The WEST Line
At proposed prod. zone
SAME

14. Distance in Miles and Direction from Nearest Town or Post Office*
38 MILES EAST OF CARLSBAD, NM

15. Distance From Proposed* Location to Nearest Property or Lease Line, Ft. (also to nearest drlg. unit line, if any) 1980'

18. Distance From Proposed Location* to Nearest Well, Drilling, Completed or Applied For, On This Lease, Ft. 1320'

21. Elevations (Show whether DF, RT, GR, etc.) 3593'

5. Lease Designation and Serial No.
NM-29233

6. If Indian, Alottee or Tribe Name

7. If Unit or CA, Agreement Designation

8. Well Name and Number
NEFF '13' FEDERAL

9. API Well No.
30-015-28/25

10. Field and Pool, Exploratory Area
LIVINGSTON RIDGE DELAWARE 39360

11. SEC., T., R., M., or BLK. and Survey or Area
Sec. 13, Township 22-S, Range 31-E

12. County or Parish
EDDY

13. State
NM

17. No. of Acres Assigned To This Well
40

20. Rotary or Cable Tools
R

22. Approx. Date Work Will Start*
8/10/94

23. PROPOSED CASING AND CEMENT PROGRAM

SIZE OF HOLE	GRADE, SIZE OF CASING	WEIGHT PER FOOT	SETTING DEPTH	QUANTITY OF CEMENT
14 3/4	11 3/4	42#	815'	550 CIRCULATE
11	8 5/8	32#	4400'	1600 CIRCULATE
7 7/8	5 1/2	15.5#	8450'	1725 (TIE BACK INTO 8 5/8" CSG.)

CEMENTING PROGRAM:

SURFACE CASING - 350 SACKS CLASS C W/ 4% GEL, 2% CACL2 (13.5 PPG, 1.74 CF/S, 9.11 GW/S). F/B 200 SACKS CLASS C W/ 2% CACL2 (14.8 PPG, 1.34 CF/S, 6.3 GW/S).

INTERMEDIATE CASING - 1400 SACKS 35/65 POZ CLASS H W/ 6% GEL, 5% SALT, 1/4# FLOCELE (12.8 PPG, 1.94 CF/S, 10.4 GW/S). F/B 200 SACKS CLASS H W/ 1% CACL2 (15.6 PPG, 1.18 CF/S, 5.2 GW/S).

PRODUCTION CASING - 1ST STAGE - 725 SACKS 50/50 POZ CLASS H W/ 2% GEL, 5% SALT, 1/4# FLOCELE (14.2 PPG, 1.35 CF/S, 6.3 GW/S). 2ND STAGE - 900 SACKS 35/65 POZ CLASS H W/ 6% GEL, 5% SALT, 1/4# FLOCELE (12.8 PPG, 1.94 CF/S, 10.4 GW/S). F/B 100 SACKS CLASS H (15.6 PPG, 1.18 CF/S, 5.2 GW/S).

THERE ARE NO OTHER OPERATORS IN THIS QUARTER QUARTER SECTION.

In Above Space Describe Proposed Program: If proposal is to deepen, give data on present productive zone and proposed new productive zone. If proposal is to drill or deepen directionally, give pertinent data on subsurface locations and measured true verticle depths. Give blowout preventer program, if any.

24. I hereby certify that the foregoing is true and correct

SIGNATURE C. P. Basham / SDH TITLE Drilling Operations Mgr. DATE 7/13/94

TYPE OR PRINT NAME C. P. Basham

(This space for Federal or State office use)

PERMIT NO. APPROVAL DATE

Application approval does not warrant or certify that the applicant holds legal or equitable title to those rights in the subject lease which would entitle the applicant to conduct operations thereon.

APPROVED BY Wm. C. Calkins TITLE State Director DATE 9-2-94

CONDITIONS OF APPROVAL, IF ANY:

Title 18 U.S.C. Section 1001, makes it a crime for any person knowingly and willfully to make to any department or agency of the United States any false, fictitious or fraudulent statements or representations as to any matter within its jurisdiction.

Submit to Appropriate
District Office
State Lease - 4 copies
Fee Lease - 3 copies

State of New Mexico
Energy, Minerals and Natural Resources Department

Form C-102
Revised 1-1-89

OIL CONSERVATION DIVISION

P.O. Box 2088

Santa Fe, New Mexico 87504-2088

DISTRICT I

P.O. Box 1987, Hobbs, NM 88240

DISTRICT II

P.O. Drawer 5D, Artesia, NM 88210

DISTRICT III

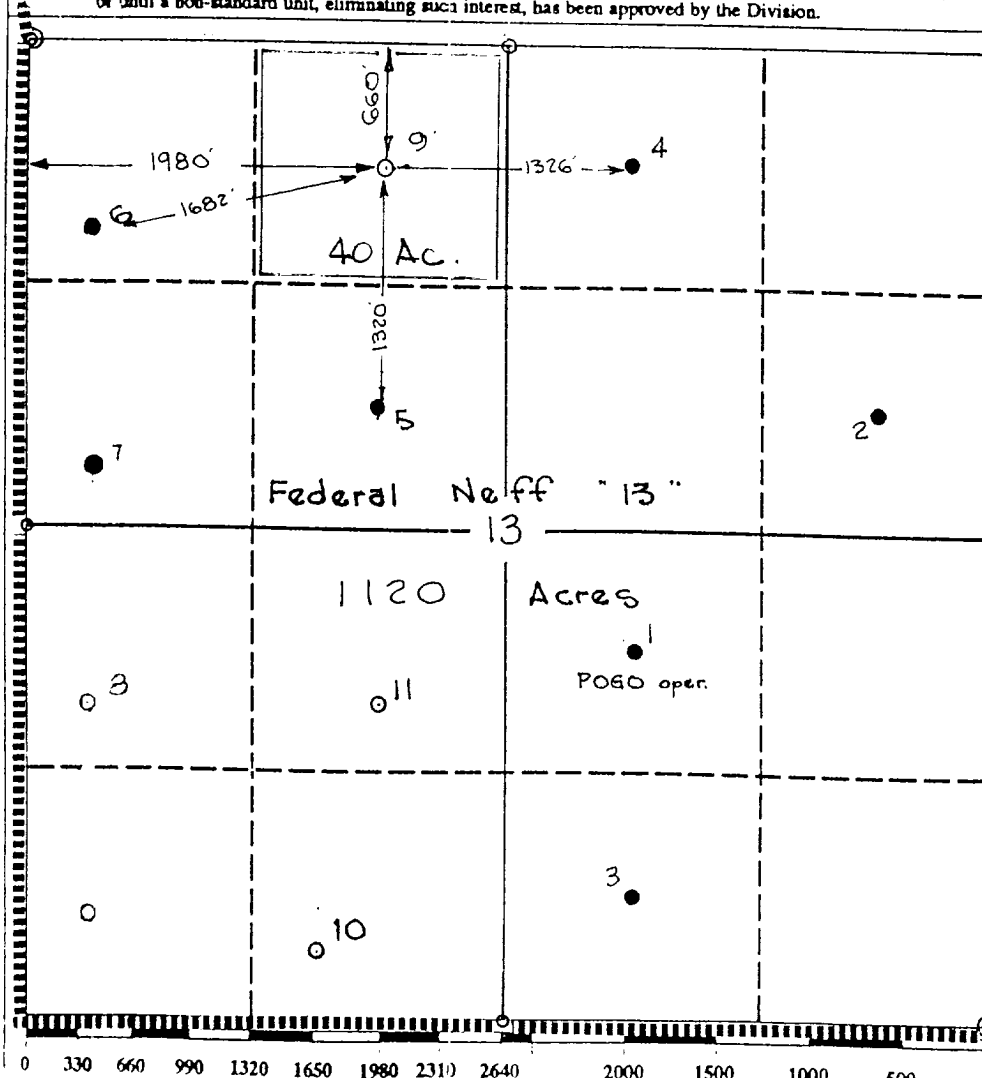
1000 Rio Brazos Rd., Aztec, NM 87410

WELL LOCATION AND ACREAGE DEDICATION PLAT

All Distances must be from the outer boundaries of the section

Operator TEXACO EXPLORATION & PRODUCTION Inc.			Lease FEDERAL NEFF "13" (Beta Unit)		Well No. 9
Unit Letter C	Section 13	Township T-22-S	Range R-31-E	County NMPM Eddy	
Actual Footage Location of Well: 660 feet from the North line and 1980 feet from the West line					
Ground level Elev. 3593	Producing Formation Brushy Canyon		Pool Livingston Ridge; DELAWARE	Dedicated Acreage: 40 Acres	

- Outline the acreage dedicated to the subject well by colored pencil or hatchure marks on the plat below.
- If more than one lease is dedicated to the well, outline each and identify the ownership thereof (both as to working interest and royalty).
- If more than one lease of different ownership is dedicated to the well, have the interest of all owners been consolidated by communitization, unitization, force-pooling, etc?
☐ Yes ☐ No If answer is "yes" type of consolidation _____
If answer is "no" list the owners and tract descriptions which have actually been consolidated. (Use reverse side of this form if necessary.)
No allowable will be assigned to the well until all interests have been consolidated (by communitization, unitization, forced-pooling, or otherwise) or until a non-standard unit, eliminating such interest, has been approved by the Division.



OPERATOR CERTIFICATION

I hereby certify that the information contained herein is true and complete to the best of my knowledge and belief.

Signature

Royce D. Mariott / cwt

Printed Name

Royce D. Mariott

Position

Division Surveyor

Company

Texaco Expl. & Prod. Inc.

Date

June 28, 1994

SURVEYOR CERTIFICATION

I hereby certify that the well location shown on this plat was plotted from field notes or actual surveys made by me or under my supervision, and that the same is true and correct to the best of my knowledge and belief.

Date Surveyed

June 27, 1994

Signature & Seal of
Professional Surveyor

John S. Piper

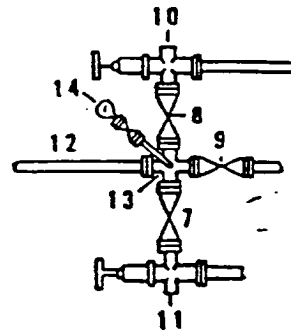
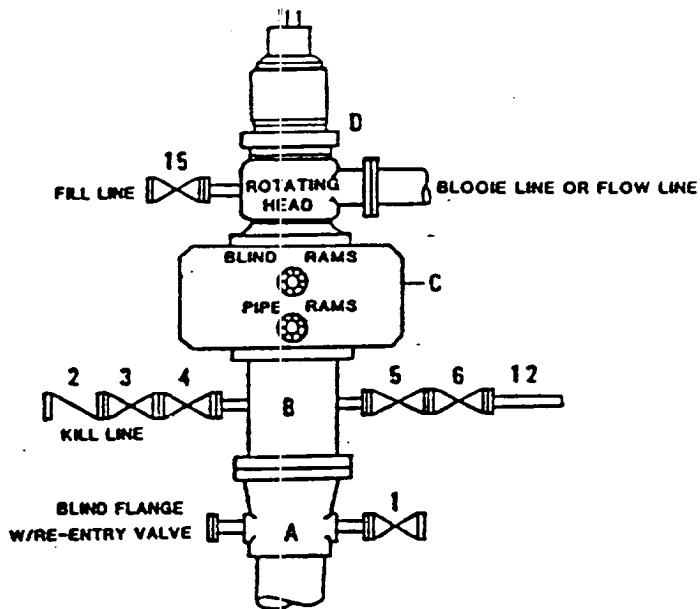
Certificate No.

7254 John S. Piper

Sheet 8 of 8

**DRILLING CONTROL
CONDITION II-B 3000 WP
FOR AIR DRILLING OR
WHERE NITROGEN OR AIR BLOWS ARE EXPECTED**

H₂S TRIM REQUIRED
YES X NO



DRILLING CONTROL

MATERIAL LIST - CONDITION II - B

- | | |
|----------------|---|
| A | Texaco Wellhead |
| B | 3000# W.P. drilling spool with a 2" minimum flanged outlet for kill line and 3" minimum flanged outlet for choke line. |
| C | 3000# W.P. Dual ram type preventer, hydraulic operated with 1" steel, 3000# W.P. control lines (where sub-structure height is adequate, 2 - 3000# W.P. single ram type preventers may be utilized). |
| D | Rotating Head with fill up outlet and extended Blooe Line. |
| 1,3,4,
7,8, | 2" minimum 3000# W.P. flanged full opening steel gate valve, or Halliburton Lo Torc Plug valve. |
| 2 | 2" minimum 3000# W.P. back pressure valve. |
| 5,6,9 | 3" minimum 3000# W.P. flanged full opening steel gate valve, or Halliburton Lo Torc Plug valve. |
| 12 | 3" minimum schedule 80, Grade "B", seamless line pipe. |
| 13 | 2" minimum x 3" minimum 3000# W.P. flanged cross. |
| 10,11 | 2" minimum 3000# W.P. adjustable choke bodies. |
| 14 | Cameron Mud Gauge or equivalent (location optional in choke line). |
| 15 | 2" minimum 3000# W.P. flanged or threaded full opening steel gate valve, or Halliburton Lo Torc Plug valve. |



TEXACO, INC.
MIDLAND DIVISION
MIDLAND, TEXAS



SCALE:	DATE	EST. NO.	DRG. NO.
DRAWN BY:			
CHECKED BY:			

EXHIBIT C