

District I
PO Box 1980, Hobbs, NM 88241-1980

District II
PO Drawer DD, Artesia, NM 88211-0719

District III
1000 Rio Brazos Rd., Aztec, NM 87410

District IV
PO Box 2088, Santa Fe, NM 87504-2088

State of New Mexico
Energy, Minerals & Natural Resources Department

OIL CONSERVATION DIVISION
PO Box 2088
Santa Fe, NM 87504-2088

Form C-101

Revised February 10, 1994

Instructions on back

Submit to Appropriate District Office

State Lease - 6 Copies

Fee Lease - 5 Copies

☐ AMENDED REPORT

APPLICATION FOR PERMIT TO DRILL, RE-ENTER, DEEPEN, PLUGBACK, OR ADD A ZONE

² Operator Name and Address. Devon Energy Corporation (Nevada) 1500 Mid America Tower 20 N. Broadway Oklahoma City, OK 73102-8260		¹ OGRID Number 6137
⁴ Property Code 16137		³ API Number 30-015-28521
⁵ Property Name Todd 36 "K" State		⁶ Well No. 5

⁷ Surface Location									
UL or lot no. K	Section 36	Township 23S	Range 31E	Lot Ids	Feet from the 2310'	North/South line South	Feet from the 1650'	East/West line West	County Eddy

⁸ Proposed Bottom Hole Location If Different From Surface									
UL or lot no.	Section	Township	Range	Lot Ids	Feet from the	North/South line	Feet from the	East/West line	County
⁹ Proposed Pool 1 Ingle Wells Delaware (33745)					¹⁰ Proposed Pool 2				

¹¹ Work Type Code N	¹² Well Type Code O	¹³ Cable/Rotary Rotary	¹⁴ Lease Type Code S (K-952)	¹⁵ Ground Level Elevation 3493' GL
¹⁶ Multiple No	¹⁷ Proposed Depth 8600'	¹⁸ Formation Delaware/Bone Spring	¹⁹ Contractor To be selected	²⁰ Spud Date 6/15/95

²¹ Proposed Casing and Cement Program

Hole Size	Casing Size	Casing weight/foot	Setting Depth	Sacks of Cement	Estimated TOC
17-1/2"	13-3/8"	48	850	700	Surface
11" 12/14	8-5/8"	32	4350	1600	Surface
7-7/8"	5-1/2"	15.5 & 17	8600	1200 **	3000

²² Describe the proposed program. If this application is to DEEPEN or PLUG BACK give the data on the present productive zone and proposed new productive zone. Describe the blowout prevention program, if any. Use additional sheets if necessary.

Devon Energy plans to drill this well to a depth of 8600' and complete it as a Delaware development well. If the well is deemed non-commercial, then it will be plugged and abandoned in accordance with the rules established by the OCD of New Mexico. BOP's will be installed while drilling the 11" and 7-7/8" holes.

** DV tool will be positioned at approximately 5300'.

Post ID-1
5-26-95
New Loc + API

²³ I hereby certify that the information given above is true and complete to the best of my knowledge and belief.		OIL CONSERVATION DIVISION	
Signature: <i>Charles W. Horsman</i>		Approved by: ORIGINAL SIGNED BY TIM W. GUM	
Printed name: Charles W. Horsman		Title: DISTRICT II SUPERVISOR	
Title: District Engineer		Approval Date: MAY 24 1995	
Date: 5/18/95		Expiration Date: 11-21-95	
Phone: (405) 552-4508		Conditions of Approval:	
Attached <input type="checkbox"/>			

C-101 Instruction

Measurements and dimensions are to be in feet/inches. Well location will refer to the New Mexico Principal Meridian.

IF THIS IS AN AMENDED REPORT CHECK THE BOX
LABELED "AMENDED REPORT" AT THE TOP OF THIS
DOCUMENT.

1. Operator's OGRID number. If you do not have one it will be assigned and filled in by District office.
2. Operator's name and address
3. API number of this well. If this is a new drill the OCD will assign the number and fill this in.
4. Property code. If this is a new property the OCD will assign the number and fill it in.
5. Property name that used to be called 'well name'.
6. The number of this well on the property.
7. The surveyed location of this well New Mexico Principal Meridian NOTE: If the United States government survey designates a Lot Number for this location use that number in the 'UL or lot no.' box. Otherwise use the OCD Unit Letter.
8. The proposed bottom hole location this well at TD
- 9 and 10. The proposed pool(s) to which this well is being drilled.
11. Work type code from the following table:

N	New well
E	Re-entry
D	Drill deeper
P	Plugback
A	Add a zone
12. Well type code from the following table:

O	Single oil completion
G	Single gas completion
M	Multiple completion
I	Injection well
S	SWD well
W	Water supply well
C	Carbon dioxide well
13. Cable or rotary drilling code

C	Propose to cable tool drill
R	Propose to rotary drill
14. Lease type code from the following table:

F	Federal
S	State
P	Private
N	Navajo
J	Jicarilla
U	Ute
I	Other Indian tribe
15. Ground level elevation above sea level
16. Intend to multiple complete? Yes or No
17. Proposed total depth of this well
18. Geologic formation at TD
19. Name of the intended drilling company if known.
20. Anticipated spud date.
21. Proposed hole size ID inches, proposed casing OD inches, casing weight in pounds per foot, setting depth of the casing or depth and top of liner, proposed cementing volume, and estimated top of cement.
22. Brief description of the proposed drilling program and BOP program. Attach additional sheets if necessary.
23. The signature, printed name, and title of the person authorized to make this report. The date this report was signed and the telephone number to call for questions about this report.

DISTRICT I
P. O. Box 1980
Hobbs, NM 88241-1980

State of New Mexico
Energy, Minerals, and Natural Resources Department

Form C-102
Revised 02-10-94
Instructions on back

DISTRICT II
P. O. Drawer DD
Artesia, NM 88211-0719

OIL CONSERVATION DIVISION
P. O. Box 2088
Santa Fe, New Mexico 87504-2088

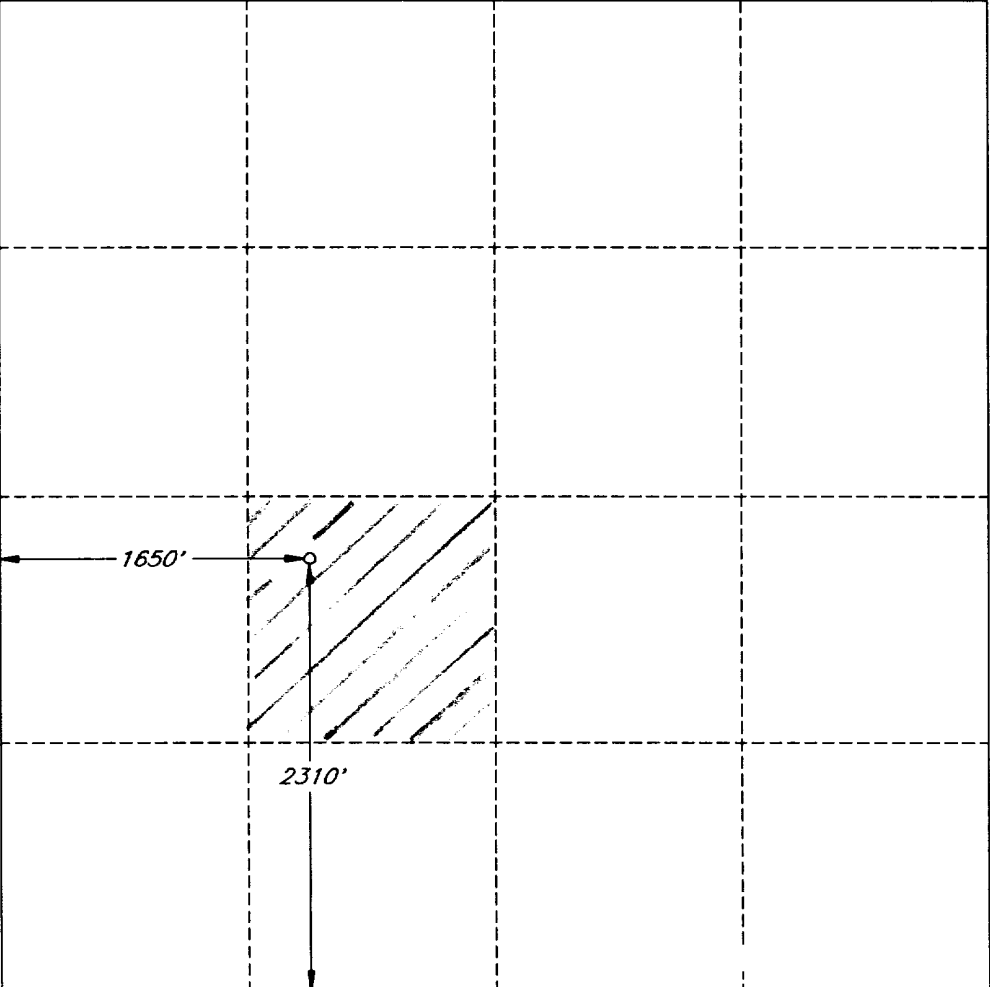
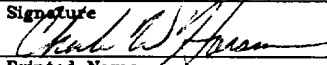
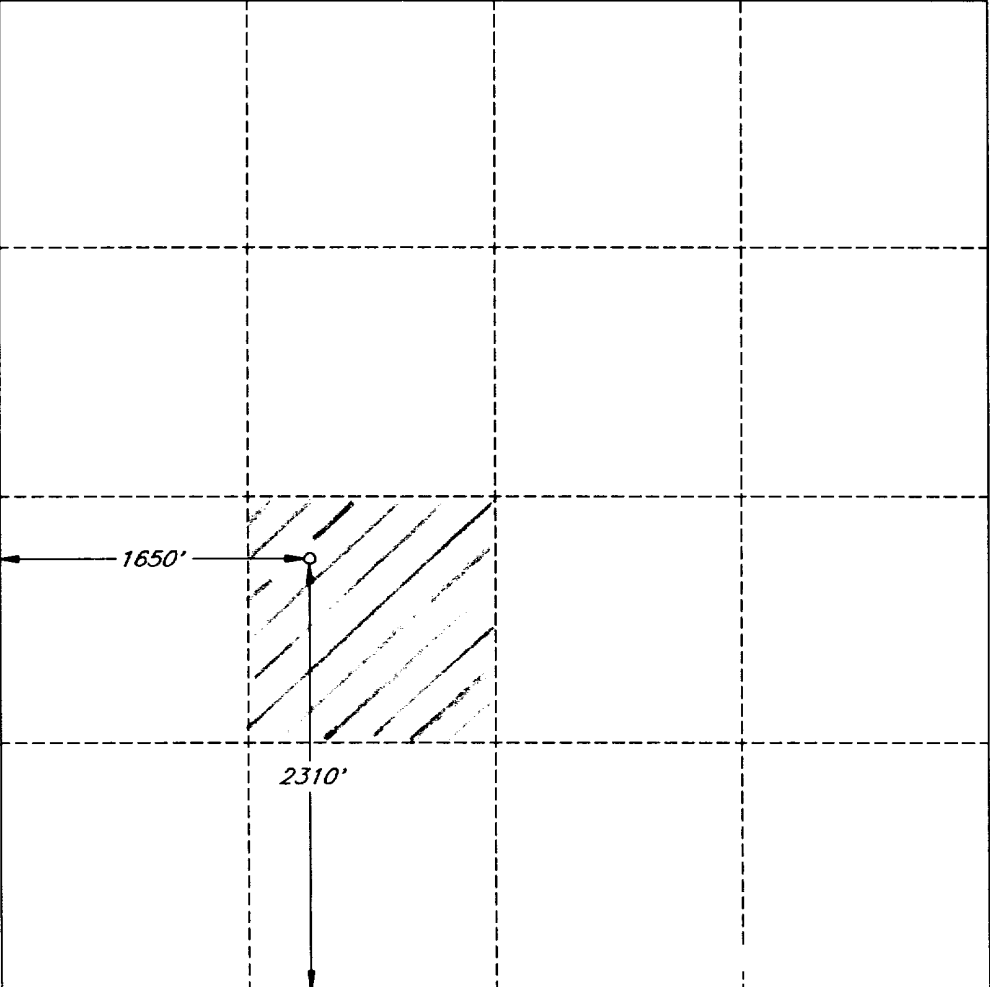
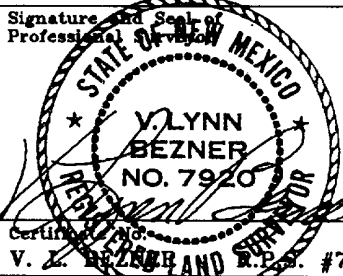
Submit to the Appropriate
District Office
State Lease - 4 copies
Fee Lease - 3 copies

☐ AMENDED REPORT

DISTRICT III
1000 Rio Brazos Rd.
Aztec, NM 87410

DISTRICT IV
P. O. Box 2088
Santa Fe, NM 87507-2088

WELL LOCATION AND ACREAGE DEDICATION PLAT

1 API Number 30-015-28521		2 Pool Code 33745		3 Pool Name Ingle Wells Delaware					
4 Property Code 16137		5 Property Name TODD '36K' STATE						6 Well Number 5	
7 OGRID No. 6137		8 Operator Name DEVON ENERGY CORPORATION						9 Elevation 3493'	
10 SURFACE LOCATION									
UL or lot no. K	Section 36	Township 23 SOUTH	Range 31 EAST, N.M.P.M.	Lot Ida	Feet from the 2310'	North/South line SOUTH	Feet from the 1650'	East/West line WEST	County EDDY
11 BOTTOM HOLE LOCATION IF DIFFERENT FROM SURFACE									
UL or lot no.	Section	Township	Range	Lot Ida	Feet from the	North/South line	Feet from the	East/West line	County
12 Dedicated Acres 40		13 Joint or Infill		14 Consolidation Code		15 Order No.			
NO ALLOWABLE WELL BE ASSIGNED TO THIS COMPLETION UNTIL ALL INTERESTS HAVE BEEN CONSOLIDATED OR A NON-STANDARD UNIT HAS BEEN APPROVED BY THE DIVISION									
						OPERATOR CERTIFICATION I hereby certify that the information contained herein is true and complete to the best of my knowledge and belief.			
						Signature 			
						Printed Name Charles W. Horsman			
						Title District Engineer			
						Date May 18, 1995			
						SURVEYOR CERTIFICATION I hereby certify that the well location shown on this plat was plotted from field notes of actual surveys made by me or under my supervision, and that the same is true and correct to the best of my belief.			
						Date of Survey MAY 8, 1995			
						Signature and Seal of Professional Surveyor 			
						Certification V. L. BEZNER AND R.P.S. #7920			
JOB #39300 1 x 47 SW / V.H.B.									

New Mexico Oil Conservation Division
C-102 Instructions

IF THIS IS AN AMENDED REPORT, CHECK THE BOX LABELED
"AMENDED REPORT" AT THE TOP OF THIS DOCUMENT.

Surveyors shall use the latest United States government survey or dependent resurvey. Well locations will be in reference to the New Mexico Principal Meridian. If the land is not surveyed contact the appropriate OCD district office. Independent subdivision surveys will not be acceptable.

1. The OCD assigned API number for this well
2. The pool code for this (proposed) completion
3. The pool name for this (proposed) completion
4. The property code for this (proposed) completion
5. The property name (well name) for this (proposed) completion
6. The well number for this (proposed) completion
7. Operator's OGRID number
8. The operator's name
9. The ground level elevation of this well
10. The surveyed surface location of this well measured from the section lines. NOTE: If the United States government survey designates a Lot Number for this location use that number in the "UL or lot no." box. Otherwise use the OCD unit letter.
11. Proposed bottom hole location. If this is a horizontal hole indicate the location of the end of the hole.
12. The calculated acreage dedicated to this completion to nearest hundredth of an acre
13. Put a Y if more than one completion will be sharing this same acreage or N if this is the only completion on this acreage
14. If more than one lease of different ownership has been dedicated to the well show the consolidation code from the following table:
 - C Communitization
 - U Unitization
 - F Forced pooling
 - O Other
 - P Consolidation pending

NO ALLOWABLE WILL BE ASSIGNED TO THIS COMPLETION UNTIL ALL INTERESTS HAVE BEEN CONSOLIDATED OR A NON-STANDARD UNIT HAS BEEN APPROVED BY THE DIVISION!

16. This grid represents a standard section. You may superimpose a non-standard section over this grid. Outline the dedicated acreage and the separate leases within that dedicated acreage. Show the well surface location and bottom hole location, if it is directionally drilled, with the dimensions from the section lines in the cardinal directions. (Note: A legal location is determined from the perpendicular distance to the edge of the tract.) If this is a high angle or horizontal hole show that portion of the well bore that is open within this pool.

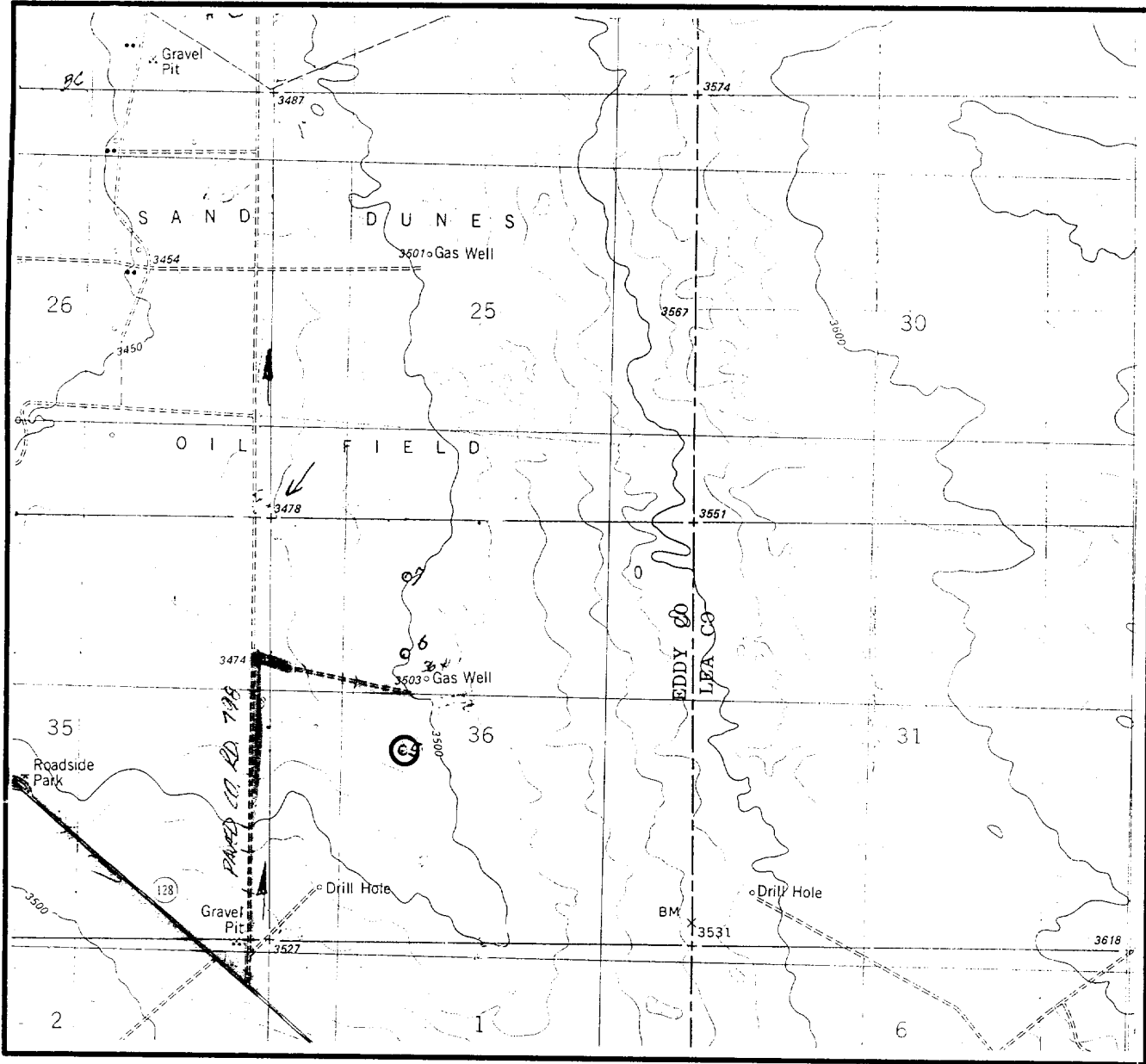
Show all lots, lot numbers, and their respective acreage.

If more than one lease has been dedicated to this completion, outline each one and identify the ownership as to both working interest and royalty.

17. The signature, printed name, and title of the person authorized to make this report, and the date this document was signed.
18. The Registered surveyors certification. This section does not have to be completed if this form has been previously accepted by the OCD and is being filed for a change of pool or dedicated acreage.

15. Write in the OCD order(s) approving a non-standard location, non-standard spacing, or directional or horizontal drilling

LOCATION & ELEVATION VERIFICATION MAP



SCALE : 1" = 2000'

CONTOUR INTERVAL 10'

SECTION 36 TWP 23-S RGE 31-E
SURVEY NEW MEXICO PRINCIPAL MERIDIAN
COUNTY EDDY STATE NM
DESCRIPTION 2310' FSL & 1650' FWL
ELEVATION 3493'

OPERATOR DEVON ENERGY CORPORATION
LEASE TODD "36K" STATE #5

U.S.G.S. TOPOGRAPHIC MAP
BOOTLEG RIDGE, NEW MEXICO

SCALED LAT. N 32°15'36"
LONG. W 103°43'32"



This location has been very carefully staked on the ground according to the best official survey records, maps, and other data available to us.
Review this plat and notify us immediately of any possible discrepancy.

TOPOGRAPHIC LAND SURVEYORS

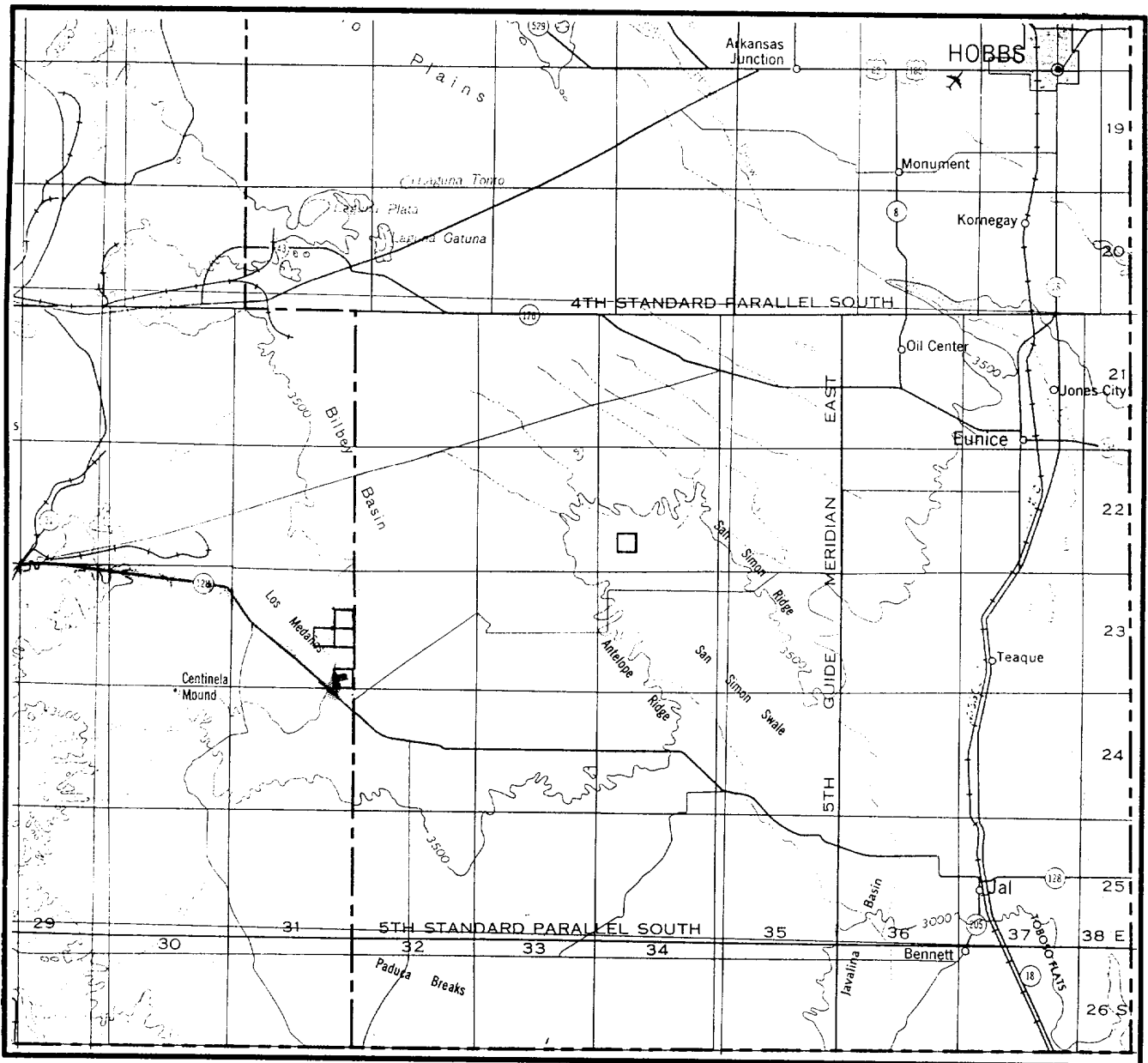
Surveying & Mapping for the Oil & Gas Industry

1307 N. HOBART
PAMPA, TX. 79065
(800) 658-6382

6709 N. CLASSEN BLVD.
OKLAHOMA CITY, OK. 73116
(800) 654-3219

2903 N. BIG SPRING
MIDLAND, TX. 79705
(800) 767-1653

VICINITY MAP



SECTION 36 TWP 23-S RGE 31-E
 SURVEY NEW MEXICO PRINCIPAL MERIDIAN
 COUNTY EDDY STATE NM
 DESCRIPTION 2310' FSL & 1650' FWL

OPERATOR DEVON ENERGY CORPORATION
 LEASE TODD "36K" STATE #5

DISTANCE & DIRECTION FROM THE JCT. OF STATE HWY.
128 & STATE HWY. 31, ±52 MILES WEST OF JAL, GO EAST
17.8 MILES ON STATE HWY. 128, THENCE NORTH 0.8 MILE
ON COUNTY ROAD 798, THENCE EAST 0.3 MILE ON LEASE
ROAD TO A POINT ±800' NORTH ON THE LOCATION.



This location has been very carefully staked on the ground according to the best official survey records, maps, and other data available to us.
 Review this plat and notify us immediately of any possible discrepancy.

TOPOGRAPHIC LAND SURVEYORS

Surveying & Mapping for the Oil & Gas Industry

1307 N. HOBART
 PAMPA, TX. 79065
 (800) 658-6382

6709 N. CLASSEN BLVD.
 OKLAHOMA CITY, OK. 73116
 (800) 654-3219

2903 N. BIG SPRING
 MIDLAND, TX. 79705
 (800) 767-1653