

UNITED STATES
DEPARTMENT OF THE INTERIOR
BUREAU OF LAND MANAGEMENT

APPLICATION FOR PERMIT TO DRILL OR DEEPEN

1a. TYPE OF WORK

DRILL ☒

DEEPEN ☐

b. TYPE OF WELL

OIL WELL ☒

GAS WELL ☐

OTHER ☐

SINGLE ZONE ☒

MULTIPLE ZONE ☐

2. NAME OF OPERATOR

Louis Dreyfus Natural Gas Corp (Kent Sams) Ph 805-749-5259

3. ADDRESS AND TELEPHONE NO.

14000 Quail Springs Parkway Suite 600 Oklahoma city, OK 73134

4. LOCATION OF WELL (Report location clearly and in accordance with any State requirements.)

At surface 2310' FSL & 660' FWL Sec. 8 T24S-R29E

At proposed prod. zone Same

Unit L

14. DISTANCE IN MILES AND DIRECTION FROM NEAREST TOWN OR POST OFFICE*

Approximately 8 miles Southeast of Loving New Mexico

15. DISTANCE FROM PROPOSED*

LOCATION TO NEAREST PROPERTY OR LEASE LINE, FT. (Also to nearest drlg. unit line, if any)

660'

16. NO. OF ACRES IN LEASE

80

17. NO. OF ACRES ASSIGNED TO THIS WELL

40

18. DISTANCE FROM PROPOSED LOCATION* TO NEAREST WELL, DRILLING, COMPLETED, OR APPLIED FOR, ON THIS LEASE, FT.

NA

19. PROPOSED DEPTH

6650'

20. ROTARY OR CABLE TOOLS

Rotary

21. ELEVATIONS (Show whether DF, RT, GR, etc.)

3013 GR

22. APPROX. DATE WORK WILL START*

As soon as approved

23.

PROPOSED CASING AND CEMENTING PROGRAM

SIZE OF HOLE	GRADE, SIZE OF CASING	WEIGHT PER FOOT	SETTING DEPTH	QUANTITY OF CEMENT
25"	Conductor	NA	40'	Cement to surface W/Redi-mix
17 1/2"	J-55 13 3/8"	54.5	650'	800 Sx. Circulate to Surface
12 1/4"	J-55 8 5/8"	24 & 32	2700'	900 Sx. Circulate to surface
7 7/8"	J-55 5 1/2"	17 & 15.5	6650'	550 Sx TC 2500'

1. Drill 25" hole to 40'. Set 40' of 20" conductor pipe and cement to surface W/Redi-mix.
2. Drill 17 1/2" hole to 650'. Run and set 650' of 13 3/8" J-55 54.5 # ST&C casing. Cement with 800 Sx. Class "C" + additives, circulate cement to surface.
3. Drill 12 1/4" hole to 2700'. Run and set 2700' of 8 5/8" J-55 24 & 32 # ST&C casing. Cement with 700 Sx Halco Light + additives, tail in with 200 Sx. premium cement + 2% CaCl. Circulate cement to surface.
4. Drill 7 7/8" hole to 6650'. Run and set 2700' of 5 1/2" J-55 17 & 15.5 # LT&C casing. Cement with 350 Sx. Halco Light and tail in with 200 Sx. 50/50 POZ + additives, top of cement 2500' +.

Special Requirements and
Special Stipulations
Attached

Posted ID-1
NL & API
9-13-96

IN ABOVE SPACE DESCRIBE PROPOSED PROGRAM: If proposal is to deepen, give data on present productive zone and proposed new productive zone. If proposal is to drill or deepen directionally, give pertinent data on subsurface locations and measured and true vertical depths. Give blowout preventer program, if any.

24.

SIGNED

Jet Penica

TITLE

Agent

DATE

07/30/96

(This space for Federal or State office use)

PERMIT NO.

APPROVAL DATE

Application approval does not warrant or certify that the applicant holds legal or equitable title to those rights in the subject lease which would entitle the applicant to conduct operations thereon.
CONDITIONS OF APPROVAL, IF ANY:

APPROVED BY

(ORIG. SCD) RICHARD L. MANOR

TITLE

DATE

AUG 30 1996

*See Instructions On Reverse Side

DISTRICT I
P.O. Box 1960, Hobbs, NM 88241-1960

DISTRICT II
P.O. Drawer DD, Artesia, NM 88211-0719

DISTRICT III
1000 Rio Brazos Rd., Aztec, NM 87410

DISTRICT IV
P.O. BOX 2088, SANTA FE, N.M. 87504-2088

State of New Mexico
Energy, Minerals and Natural Resources Department

Form C-101
Revised February 10, 1994
Submit to Appropriate District Office
State Lease - 4 Copies
Fee Lease - 3 Copies

OIL CONSERVATION DIVISION

P.O. Box 2088
Santa Fe, New Mexico 87504-2088

☐ AMENDED REPORT

WELL LOCATION AND ACREAGE DEDICATION PLAT

API Number 30-015-29137	Pool Code 50371	Pool Name Undes. PIERCE CROSSING-BONE SPRING
Property Code	Property Name COCHITI 8 FEDERAL	Well Number 13
OGRID No. 025773	Operator Name LOUIS DREYFUS NATURAL GAS CORP.	Elevation 3013

Surface Location

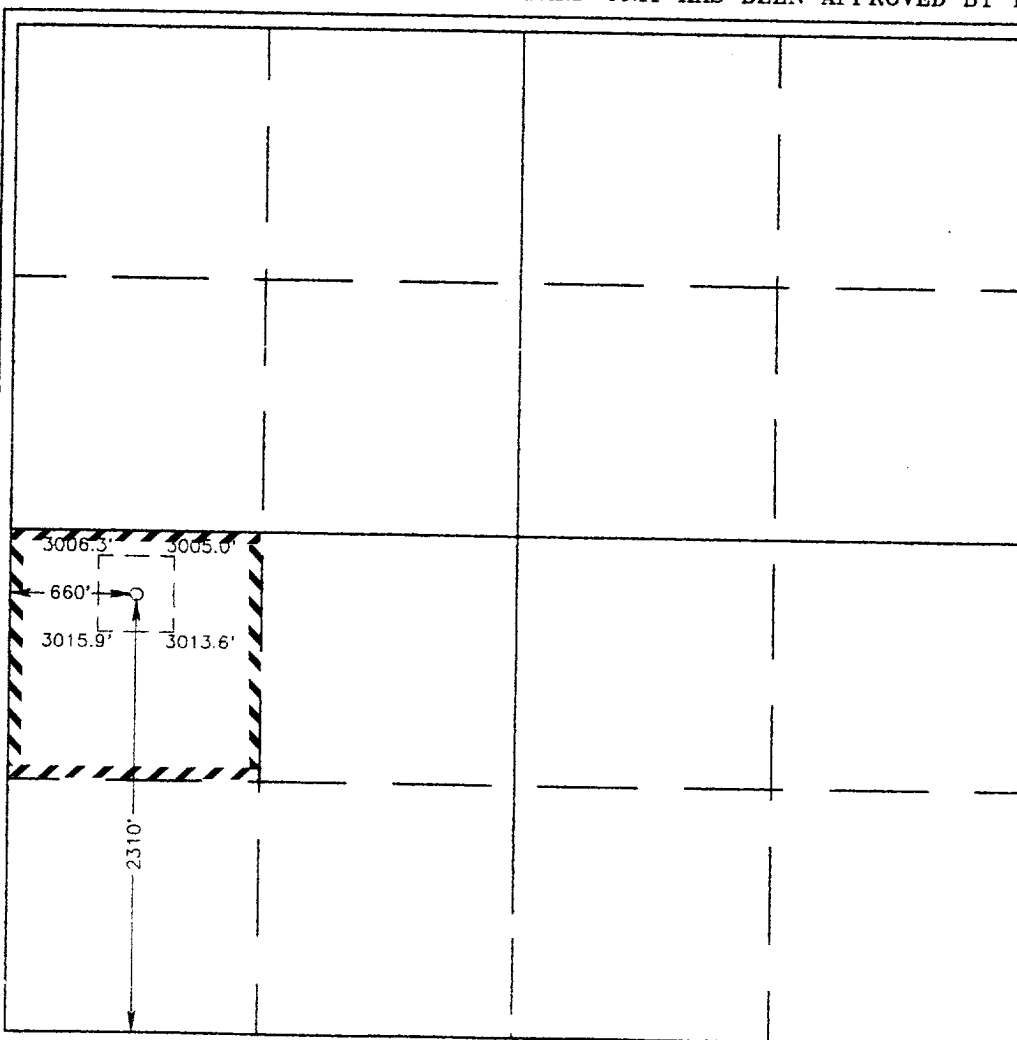
UL or lot No.	Section	Township	Range	Lot Idn	Feet from the	North/South line	Feet from the	East/West line	County
L	8	24 S	29 E		2310	SOUTH	660	WEST	EDDY

Bottom Hole Location If Different From Surface

UL or lot No.	Section	Township	Range	Lot Idn	Feet from the	North/South line	Feet from the	East/West line	County

Dedicated Acres	Joint or Infill	Consolidation Code	Order No.
40			

NO ALLOWABLE WILL BE ASSIGNED TO THIS COMPLETION UNTIL ALL INTERESTS HAVE BEEN CONSOLIDATED
OR A NON-STANDARD UNIT HAS BEEN APPROVED BY THE DIVISION



OPERATOR CERTIFICATION

I hereby certify the the information
contained herein is true and complete to the
best of my knowledge and belief.

Joe T. Janica
Signature

Joe T. Janica
Printed Name

Agent
Title

07/30/96
Date

Date

SURVEYOR CERTIFICATION

I hereby certify that the well location shown
on this plat was plotted from field notes of
actual surveys made by me or under my
supervision, and that the same is true and
correct to the best of my belief.

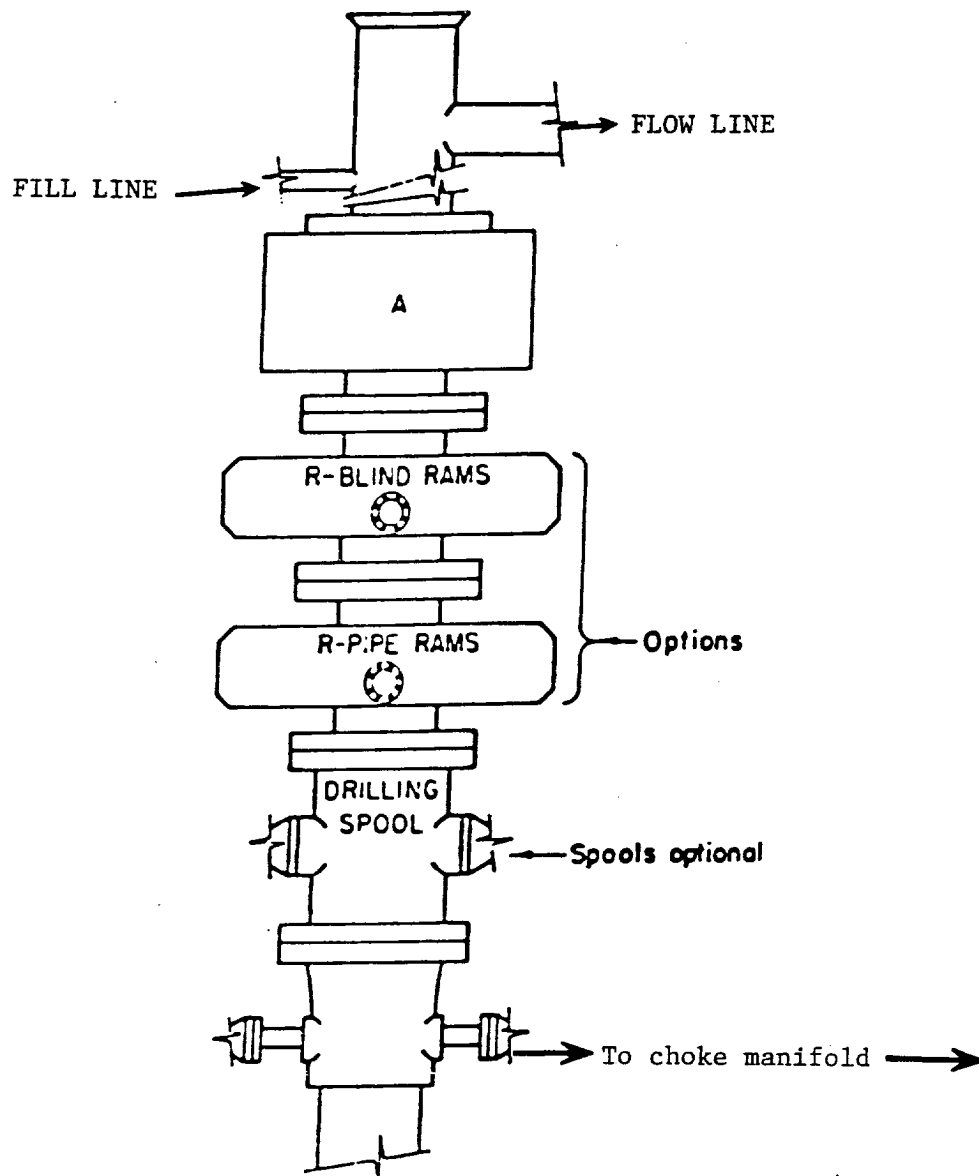
JULY 23, 1996

Date Surveyed CDG

Signature & Seal of
Professional Surveyor

Ronald J. Eidson
7-30-96
86-11-0898

Certificate No. JOHN W. WEST 676
RONALD J. EIDSON 3236
GARY EIDSON 1264



ARRANGEMENT SRRA

900 Series
3000 PSI WP

EXHIBIT "E"
B.O.P. SKETCH TO BE USED ON
LOUIS DREYFUS NATURAL GAS CORP
COCHITI "8" FEDERAL # 13
660' FWL & 2310' FSL SEC. 8
T24S-R29E EDDY CO. N

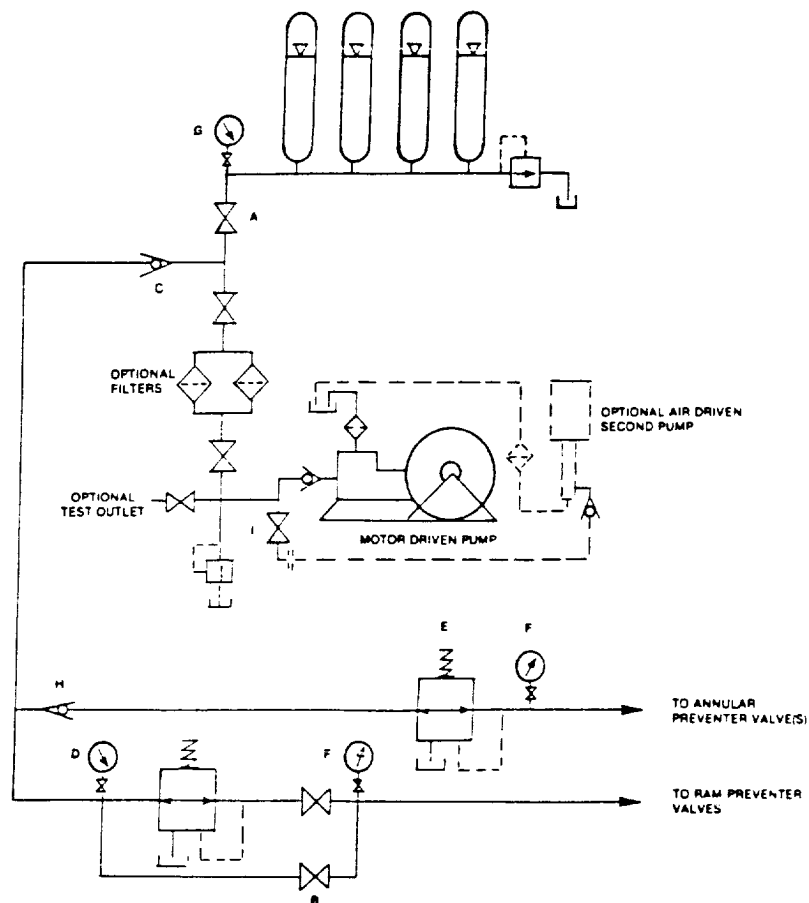


FIGURE K6-1. The schematic sketch of an accumulator system shows required and optional components.

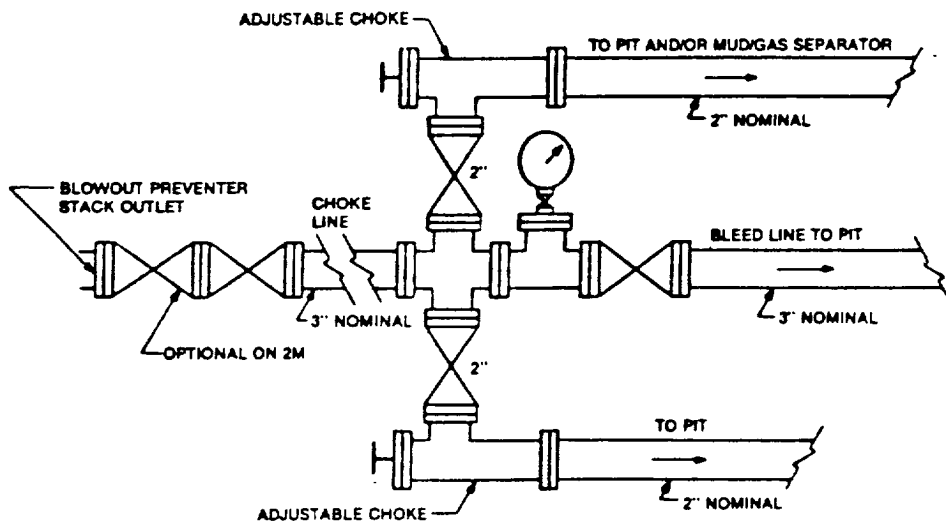
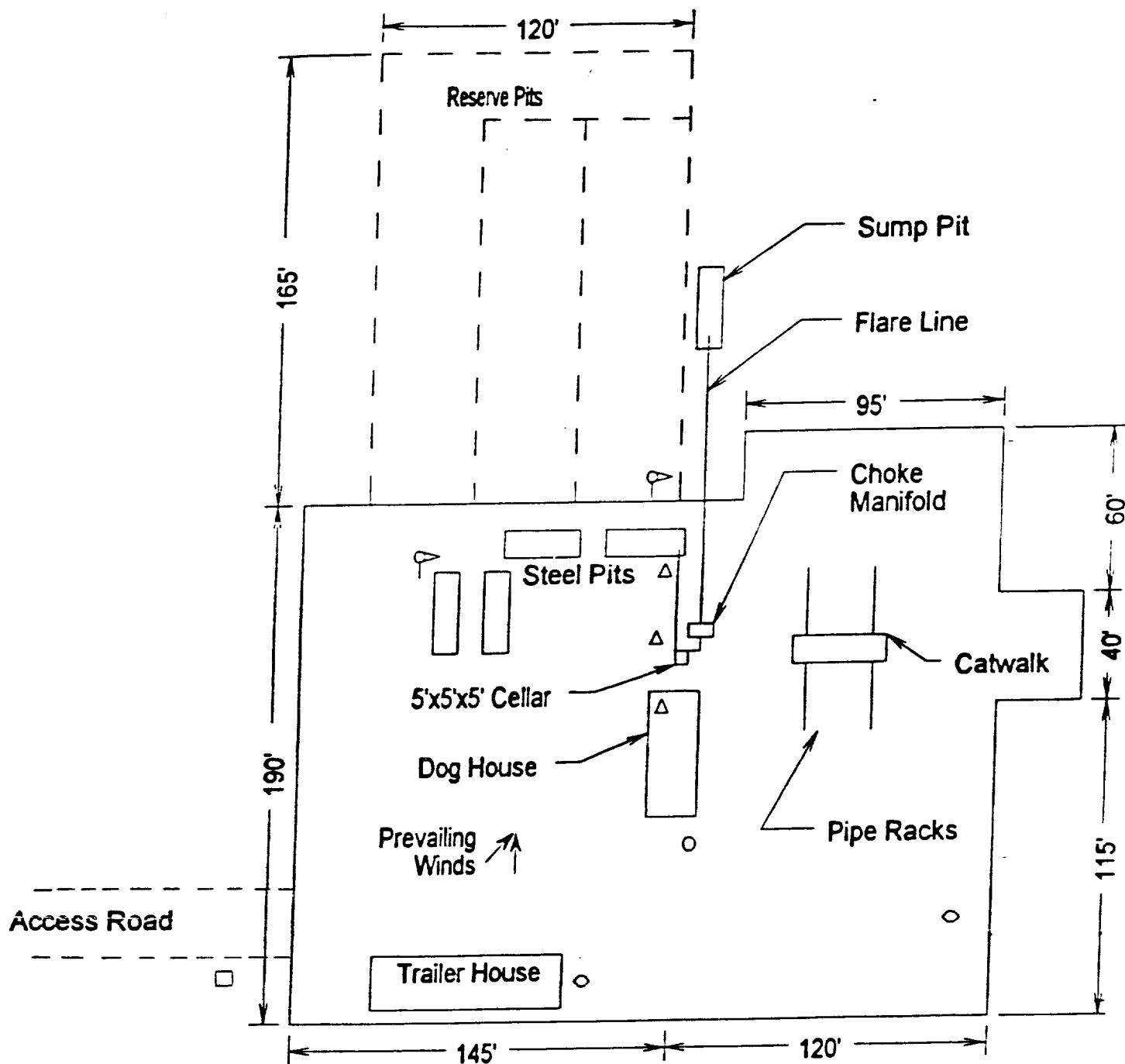


FIGURE K4-1. Typical choke manifold assembly for 2M and 3M rated working pressure service — surface installation.

EXHIBIT " 1-E"
 CHOKE MANIFOLD & CLOSING UNIT
 LOUIS DREYFUS NATURAL GAS CORP
 COCHITI "8" FEDERAL # 13
 660' FWL & 2310' FSL SEC. 8
 T24S-R29E EDDY CO. N



- Wind Direction Indicators
(wind sock or streamers)
- △ H₂S Monitors
(alarms at bell nipple and shale shaker)
- Briefing Areas
- Remote BOP Closing Unit
- Sign and Condition Flags

EXHIBIT "D"
RIG LAYOUT PLAT
LOUIS DREYFUS NATURAL GAS CORP.
COCHITI "8" FEDERAL # 13
660' FWL & 2310' FSL SEC. 8
T24S-R29E EDDY CO. N.