

District I
 PO Box 1980, Hobbs, NM 88241-1980
 District II
 PO Drawer DD, Artesia, NM 88211-0719
 District III
 1000 Rio Brazos Rd., Aztec, NM 87410
 District IV
 PO Box 2088, Santa Fe, NM 87504-2088

State of New Mexico
 Energy, Minerals & Natural Resources Department

OIL CONSERVATION DIVISION
 PO Box 2088
 Santa Fe, NM 87504-2088

Form C-101
 Revised February 10, 1994
 Instructions on back
 Submit to Appropriate District Office
 State Lease - 6 Copies
 Fee Lease - 5 Copies

AMENDED REPORT

APPLICATION FOR PERMIT TO DRILL, RE-ENTER, DEEPEN, PLUGBACK, OR ADD A ZONE

Operator Name and Address. MYCO INDUSTRIES, INC. 105 South Fourth Street Artesia, New Mexico 88210		OGRID Number 15445
Property Code 19014	Property Name West Loving Unit	API Number 30-015-29170
		Well No. 3

7 Surface Location

UL or lot no.	Section	Township	Range	Lot Idn	Feet from the	North/South line	Feet from the	East/West line	County
F	23	23-S	27-E		1980'	North	1980	West	Eddy

8 Proposed Bottom Hole Location If Different From Surface

UL or lot no.	Section	Township	Range	Lot Idn	Feet from the	North/South line	Feet from the	East/West line	County
UNDES CASS DRAW, DELAWARE Midland Delaware					Proposed Pool 2				
					10410				

Work Type Code N	Well Type Code O	Cable/Rotary R	Lease Type Code P	Ground Level Elevation 3128'
Multiple No	Proposed Depth 3500	Formation Delaware	Contractor Artesia Fishing Tool	Spud Date ASAP

21 Proposed Casing and Cement Program

Hole Size	Casing Size	Casing weight/foot	Setting Depth	Sacks of Cement	Estimated TOC
12 1/4"	8 5/8"	24#	375	250	Circulated
7 7/8"	5 1/2"	17#	TD		Circulated

Describe the proposed program. If this application is to DEEPEN or PLUG BACK give the data on the present productive zone and proposed new productive zone. Describe the blowout prevention program, if any. Use additional sheets if necessary.

Mycos Industries, Inc. wishes to drill and test the Delaware and intermediate formations. Approx. 375' of surface casing will be set and cement circulated to shut off gravel and cavings. If commercial, production casing will be run and cemented, will perforate and stimulate as needed for production.

MUD PROGRAM: FW to 375'; SW gel to TD.

BOPE PROGRAM: BOPE will be installed on the 8 5/8" casing and tested daily.

Post ID-1
9-27-96
New-loc
& API

I hereby certify that the information given above is true and complete to the best of my knowledge and belief. Signature: <i>Ken Beardemphl</i>	OIL CONSERVATION DIVISION	
	Approved by: ORIGINAL SIGNED BY TIM W. GUM	Title: DISTRICT II SUPERVISOR
Printed name: Ken Beardemphl	Title: Landman	Approval Date: 9-20-96
Date: 9-20-96	Phone: 505-748-1471	Expiration Date: 9-20-97
Conditions of Approval: Attached <input type="checkbox"/>		

District I
 PO Box 1980, Hobbs, NM 88241-1980
 District II
 PO Drawer DD, Artesia, NM 88211-0719
 District III
 1000 Rio Brazos Rd., Aztec, NM 87410
 District IV
 PO Box 2088, Santa Fe, NM 87504-2088

State of New Mexico
 Energy, Minerals & Natural Resources Department

OIL CONSERVATION DIVISION
 PO Box 2088
 Santa Fe, NM 87504-2088

Form C-102
 Revised February 10, 1994
 Instructions on back
 Submit to Appropriate District Office
 State Lease - 4 Copies
 Fee Lease - 3 Copies

AMENDED REPORT

WELL LOCATION AND ACREAGE DEDICATION PLAT

1 API Number 30-015-29170		2 Pool Code 10410		3 Pool Name UNDES CASS DRAW; DELAWANE WINDYBUSH	
4 Property Code		5 Property Name WEST LOVING UNIT			6 Well Number 3
7 OGRID No. 015445		8 Operator Name MYCO INDUSTRIES, INC.			9 Elevation 3128.

10 Surface Location

UL or lot no.	Section	Township	Range	Lot Ida	Feet from the	North/South line	Feet from the	East/West line	County
F	23	23-S	27-E		1980	NORTH	1980	WEST	EDDY

11 Bottom Hole Location If Different From Surface

UL or lot no.	Section	Township	Range	Lot Ida	Feet from the	North/South line	Feet from the	East/West line	County

12 Dedicated Acres 40	13 Joint or Infill	14 Consolidation Code	15 Order No.
--------------------------	--------------------	-----------------------	--------------

NO ALLOWABLE WILL BE ASSIGNED TO THIS COMPLETION UNTIL ALL INTERESTS HAVE BEEN CONSOLIDATED OR A NON-STANDARD UNIT HAS BEEN APPROVED BY THE DIVISION

<p>16</p>	<p>17 OPERATOR CERTIFICATION</p> <p>I hereby certify that the information contained herein is true and complete to the best of my knowledge and belief</p>	
	<p>Signature: <i>Ken Beardemphl</i></p> <p>Printed Name: Ken Beardemphl</p> <p>Title: Landman</p> <p>Date: 9-20-96</p>	
	<p>18 SURVEYOR CERTIFICATION</p> <p>I hereby certify that the well location shown on this plat was plotted from field notes of actual surveys made by me or under my supervision, and that the same is true and correct to the best of my knowledge and belief.</p> <p>Date of Survey: SEPTEMBER 20 1996</p> <p>Signature and Seal of Professional Surveyor: <i>[Signature]</i></p> <p>REGISTERED PROFESSIONAL ENGINEER LAND SURVEYOR 5412</p> <p>Certificate Number: NM PE&PS NO. 5412</p>	
	<p>NEW MEXICO</p>	

ARTESIA FISHING TOOL CO., INC

RIG INVENTORY

RIG # 3

RIG PLAT

Drawworks - Gardner Denver
3000

Powered by 2 - 3306 Caterpillars

2 Pumps - D300 Emcos,
7-1/2" x 14", D3406
Caterpillars, 350 hp.

Mud Pump - stand-by pump

102' Hydraulic Telescoping,
250,000#

8' x 6' x 12', 250,000#
Substructure

Rotary drive off Drawworks

6000', 4-1/2" XH, 16.60 Grade E
Drill Pipe

28 - 30' 6-1/4", 4-1/2" XO

10" Shaefter Type B
Double BOP, 3000#

Hydraulic Closing Unit

5 Valve w/2 Chokes Manifold,
3000#

35' Metal Top Doghouse

40' Metal Changing Room

2-pen Recorder Geolograph

Light Plants: #1 - 185 KW,
#2 - 75 KW

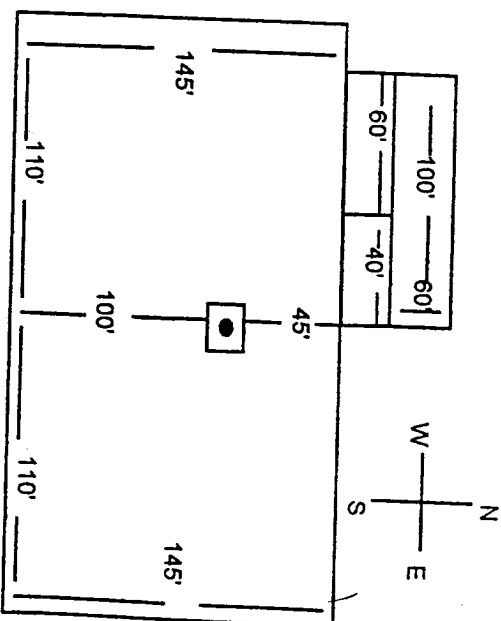
3000 gallon Pressurized Diesel
Tank

1000 gallon Propane Tank

500 bbl. Water Storage Tank

3 sets Triangle Pipe Racks

60' Catwalk



BOP

SCHEMATIC

