

I hereby certify that the information given above is true and complete to the best of my knowledge and belief.		OIL CONSERVATION DIVISION	
Signature: <i>Cathy Tomberlin</i>		Approved By: <i>Jim W. Green</i> 1308	
Printed name: Cathy Tomberlin		Title: <i>District Supervisor</i>	
Title: Operation Tech		Approval Date: SEP 11 2000 Expiration Date: SEP 11 2001	
Date: 09-07-00	Phone: 915-685-8100	Conditions of Approval: <input type="checkbox"/> Attached: <input type="checkbox"/>	

District I
PO Box 1980, Hobbs, NM 88241-1980

District II
811 South First, Artesia, NM 88210

District III
1000 Rio Brazos Rd., Aztec, NM 87410

District IV
2040 South Pacheco, Santa Fe, NM 87505

State of New Mexico
Energy, Minerals & Natural Resources Department

OIL CONSERVATION DIVISION
2040 South Pacheco
Santa Fe, NM 87505

Form C-102

Revised October 18, 1994

Instructions on back

Submit to Appropriate District Office

State Lease - 4 Copies

Fee Lease - 3 Copies

☐ AMENDED REPORT

WELL LOCATION AND ACREAGE DEDICATION PLAT

1 API Number	2 Pool Code	3 Pool Name Pierce Crossing Bone Springs
4 Property Code	5 Property Name Harroun 10	6 Well Number 1
7 OGRID No. 017891	8 Operator Name Pogo Producing Company	9 Elevation 2944'

10 Surface Location

UL or lot no. N	Section 10	Township 24S	Range 29E	Lot Idn	Feet from the 660	North/South line North	Feet from the 2310	East/West Line West	County Eddy
--------------------	---------------	-----------------	--------------	---------	----------------------	---------------------------	-----------------------	------------------------	----------------

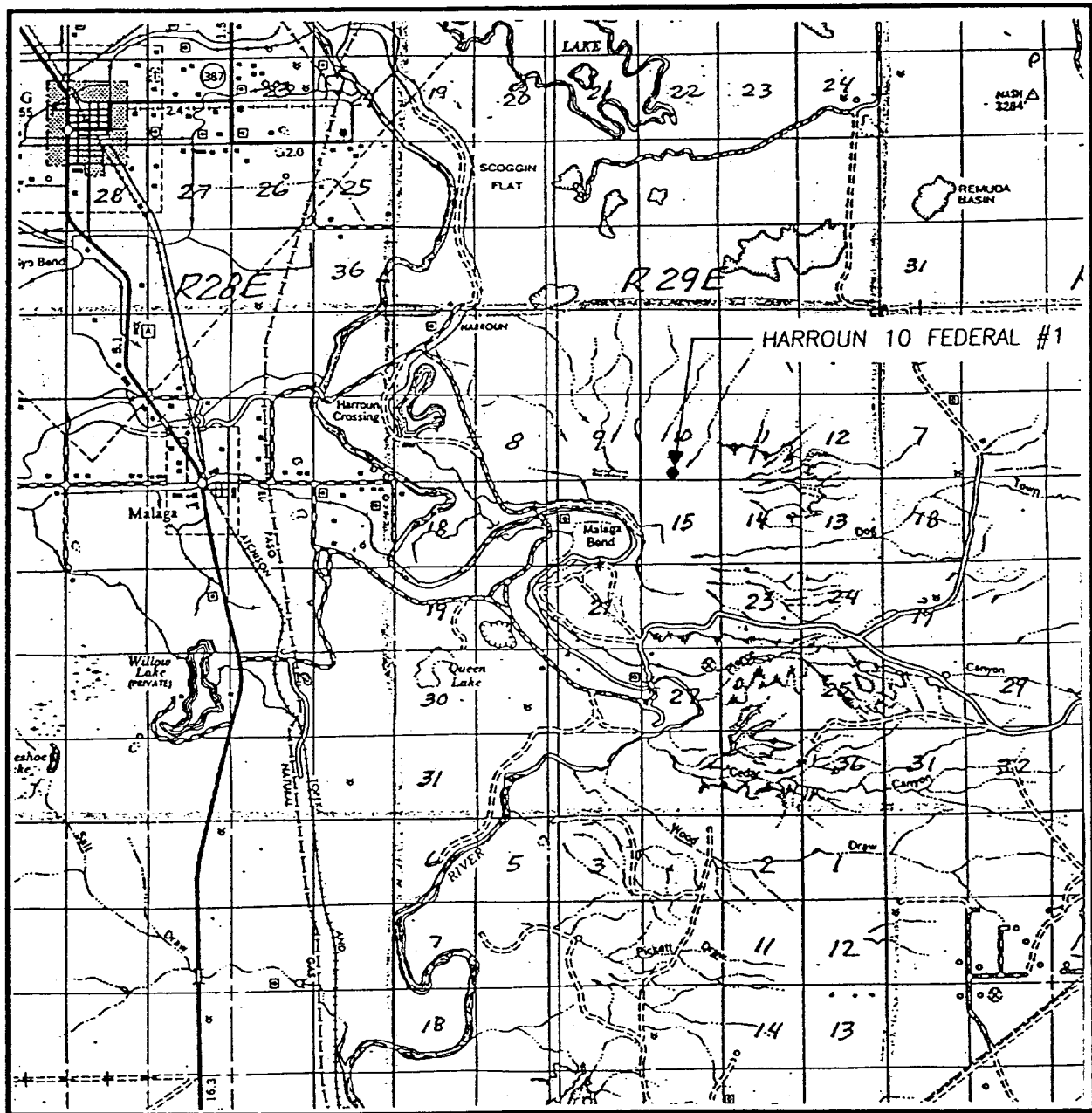
11 Bottom Hole Location If Different From Surface

UL or lot no.	Section	Township	Range	Lot Idn	Feet from the	North/South line	Feet from the	East/West Line	County
12 Dedicated Acres 40	13 Joint or Infill	14 Consolidation Code	15 Order No.						

NO ALLOWABLE WILL BE ASSIGNED TO THIS COMPLETION UNTIL ALL INTERESTS HAVE BEEN CONSOLIDATED
OR A NON-STANDARD UNIT HAS BEEN APPROVED BY THE DIVISION

16					17 OPERATOR CERTIFICATION <i>I hereby certify that the information contained herein is true and complete to the best of my knowledge and belief</i> Signature Cathy Tomberlin Printed Name Operation Tech Title 09/07/00 Date
					18 SURVEYOR CERTIFICATION <i>I hereby certify that the well location shown on this plat was plotted from field notes of actual surveys made by me or under my supervision, and that the same is true and correct to the best of my belief.</i> Date of Survey Signature and Seal of Professional Surveyer: Refer to Orig. Plat Certificate Number

VICINITY MAP



SCALE: 1" = 2 MILES

SEC. 10 TWP. 24-S RGE. 29-E

SURVEY N.M.P.M.

COUNTY EDDY

DESCRIPTION 660' FSL & 2310' FWL

ELEVATION 2944

OPERATOR POGO PRODUCING COMPANY

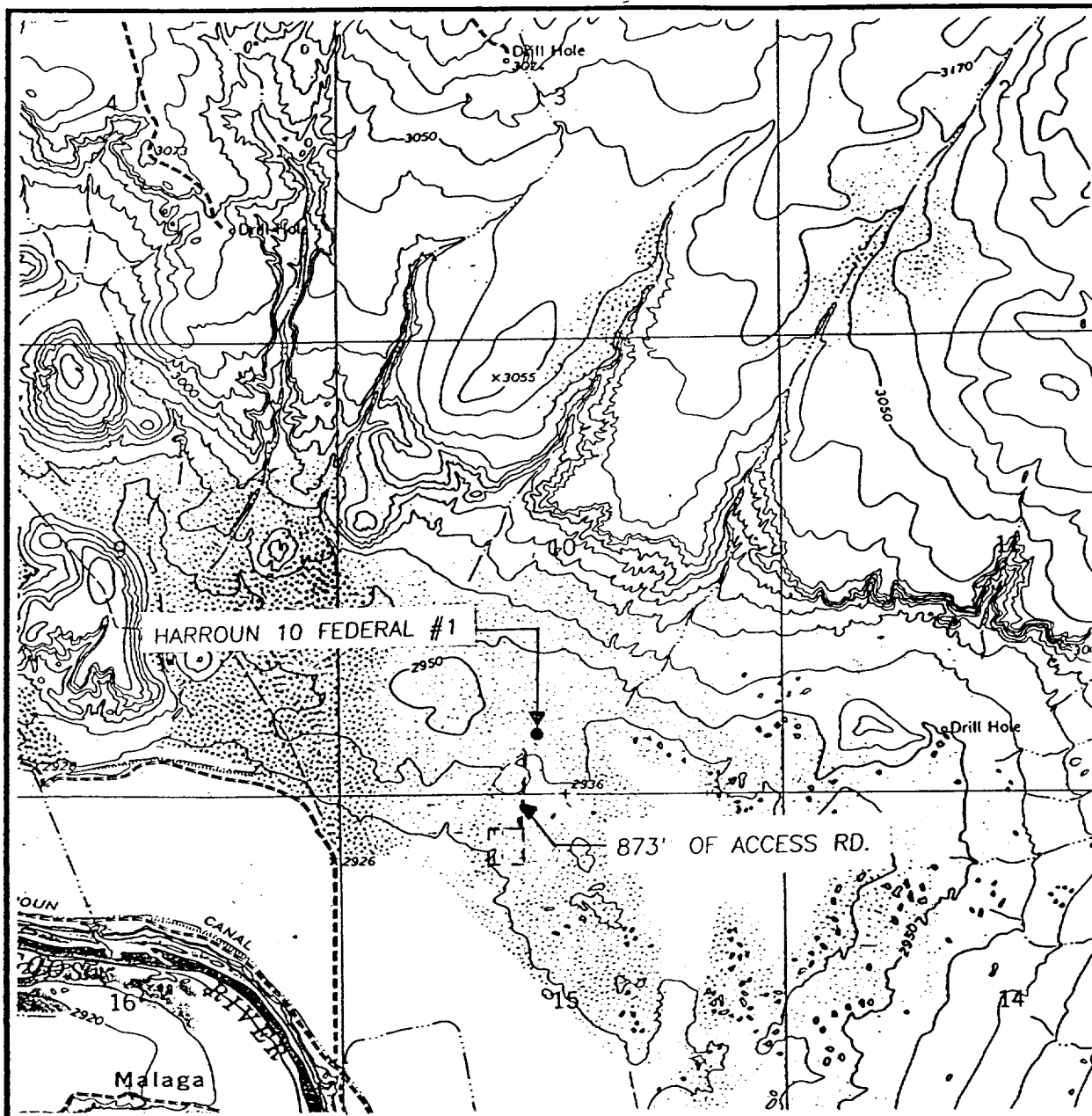
LEASE HARROUN 10 FEDERAL

JOHN WEST ENGINEERING

HOBBS, NEW MEXICO

(505) 393-3117

LOCATION VERIFICATION MAP



SCALE: 1" = 2000'

CONTOUR INTERVAL:
PIERCE CANYON - 10'

SEC. 10 TWP. 24-S RGE. 29-E

SURVEY N.M.P.M.

COUNTY EDDY

DESCRIPTION 660' FSL & 2310' FWL

ELEVATION 2944

OPERATOR POGO PRODUCING COMPANY

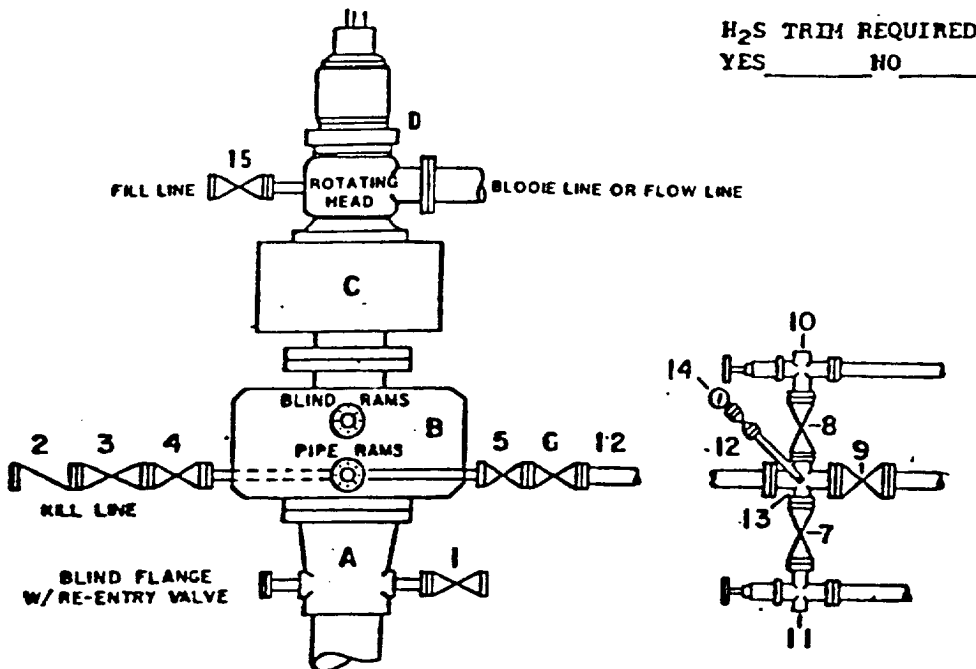
LEASE HARROUN 10 FEDERAL

U.S.G.S. TOPOGRAPHIC MAP

PIERCE CANYON, N.M.

JOHN WEST ENGINEERING
HOBBS, NEW MEXICO
(505) 393-3117

DRILLING CONTROL **CONDITION III-B 3000 PSI WP**



DRILLING CONTROL

MATERIAL LIST - CONDITION III - B

- | | |
|----------------|---|
| A | Wellhead |
| B | 3000# W.P. Dual ram type preventer, hydraulic operated with 1" steel, 3000# W.P. control lines (where sub-structure height is adequate, 2 - 3000# W.P. single ram preventers may be utilized with 3000# W.P. drilling spool with 2" minimum flanged outlet for kill line and 3" minimum flanged outlet for choke line. The drilling spool is to be installed below the single ram type preventers). |
| C | 3000# W.P. Annular Preventer with 1" steel, 3000# W.P. control lines. |
| D | Rotating Head with fill up outlet and extended Blooie line. |
| 1,3,4,
7,8, | 2" minimum 3000# W.P. flanged full opening steel gate valve, or Halliburton Lo Torc Plug valve. |
| 2 | 2" minimum 3000# W.P. back pressure valve. |
| 5,6,9 | 3" minimum 3000# W.P. flanged full opening steel gate valve, or Halliburton Lo Torc Plug valve. |
| 12 | 3" minimum Schedule 80, Grade B, seamless line pipe. |
| 13 | 2" minimum x 3" minimum 3000# W.P. flanged cross. |
| 10,11 | 2" minimum 3000# W.P. adjustable choke bodies. |
| 14 | Cameron Mud Gauge or equivalent (location optional in Choke line). |
| 15 | 2" minimum 3000# W.P. flanged or threaded full opening steel gate valve, or Halliburton Lo Torc Plug valve. |

SCALE	DATE	EST. NO.	ORG. NO.
DRAWN BY			
CHECKED BY			
APPROVED BY			

EXHIBIT E